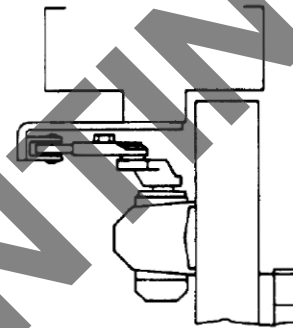
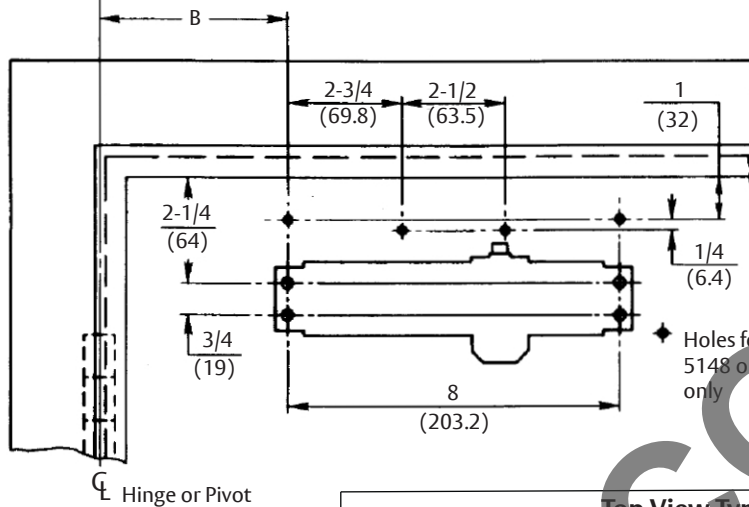
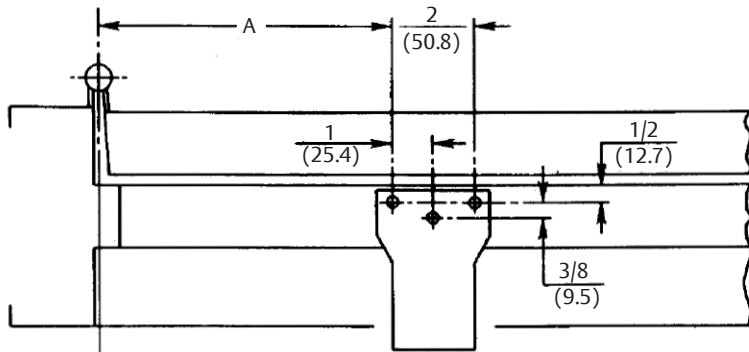


Opening	Dim. A	Dim. B
To 100°	9-7/8 (251)	7-1/4 (184)
101° to 180°*	7-1/8 (181)	4-1/4 (108)

*Conditions Permitting

- Do not scale drawing.
- Left hand door shown.
- Dimensions are:
inches
millimeters



Notes:

Door swing may be limited by door, frame, wall or hardware conditions.

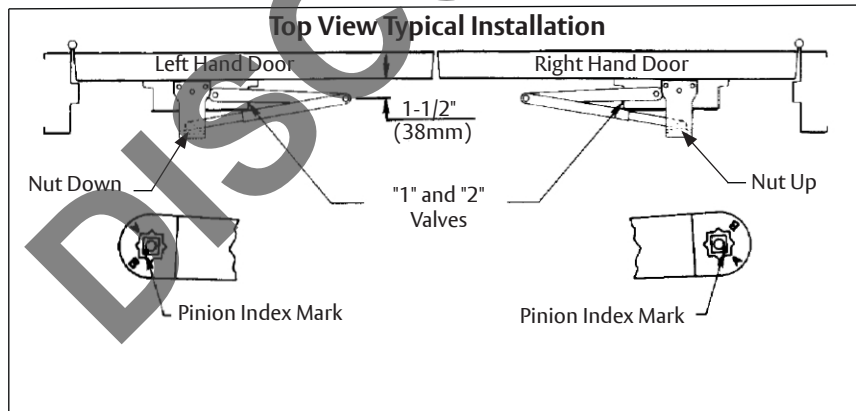
Hollow metal doors require channel or box type reinforcement when thru bolt mount is specified.

Minimum thickness recommended for reinforcements in hollow metal doors and frames: .1046" (2.66mm) unless otherwise noted.

Preparation for Fasteners

Type of Fastener	Door of Frame	Preparation
#14 type "A" Sheet Metal Screw	Wood	7/32" (5.5mm)
1/4-20 Machine Screw	Hollow Metal	#7 (.201" dia.) or 5.10mm drill - 1/4-20 tap
SNB (Sex nut and bolt) (Optional)	Hollow Metal	9/32" (7.00mm) thru 3/8" (9.50mm) door face Opposite to closer
	Aluminum or Wood	3/8" (9.50mm) thru
TBGN (Thru bolt and nut) (Optional)	All	9/32" (7.00mm) thru 3/8" (9.50mm) dia. 3/8" (10mm) deep, door Face opposite to closer

Top View Typical Installation



Experience a safer and more open world

Copyright © 1997, 2024, ASSA ABLOY Access and Egress Hardware Group, Inc. All rights reserved. Reproduction in whole or in part without the express written permission of ASSA ABLOY Access and Egress Hardware Group, Inc. is prohibited.

5110 or 5110BC Series Door Closers
Door and Frame Preparation Template
Parallel Hold Open Arm Application
With or Without 5148 or 5158 Drop Plate

Template Number:
7351-0102
Sheet: 1 of 1
Date: 01/24

ASSA ABLOY

1-855-557-5078
www.assaabloy.com