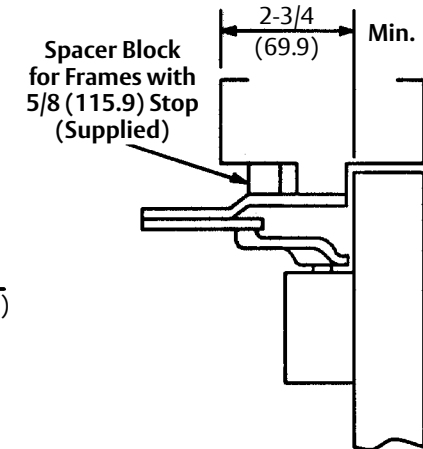
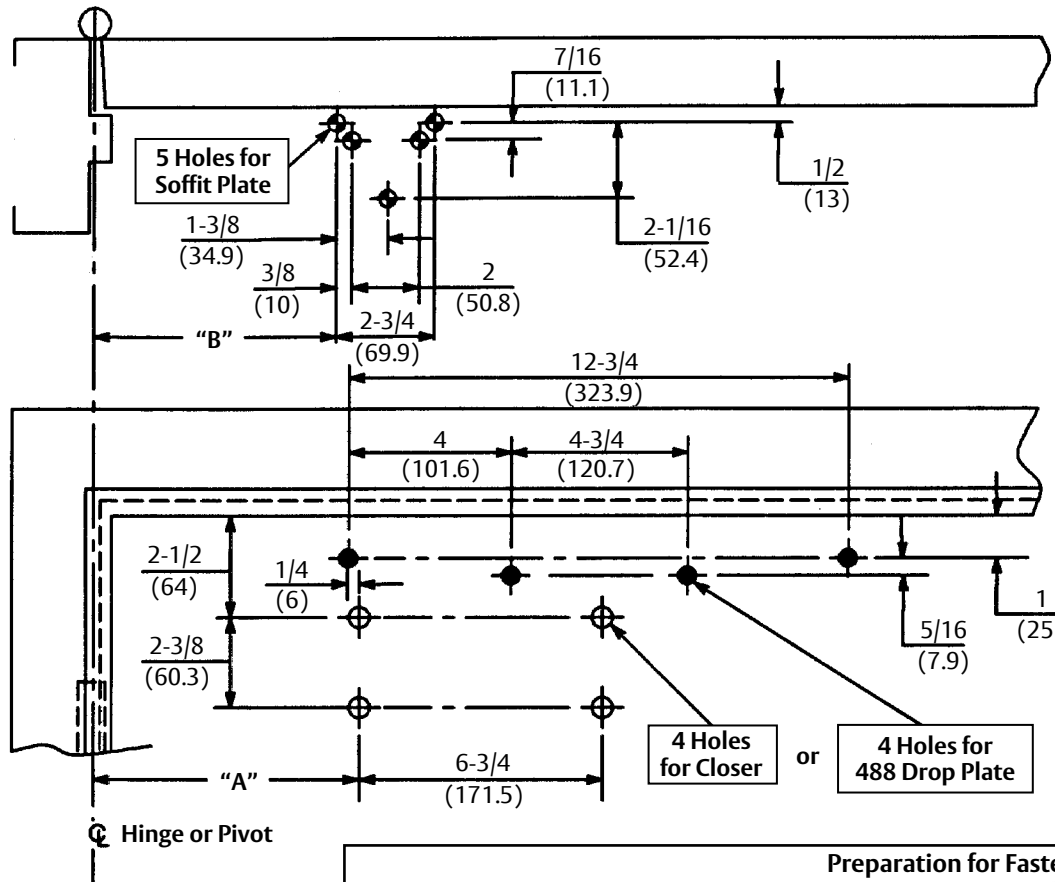


Opening	Dim. "A"	Dim. "B"
To 100°	8-3/4 (222)	9-1/4 (235)
100° to 120°	7-1/4 (184)	7-3/4 (197)
120° to 150°	6-1/4 (159)	6-3/4 (172)
150° to 180°	5-1/4 (133)	5-3/4 (146)



Caution: Door swing may be limited by door, frame, wall or hardware conditions.

Notes:

1. Do not scale drawing.
2. Left hand door shown.
3. Dimensions are in inches (mm).
4. Hollow metal doors require channel or box type reinforcement when thru bolt mount is specified.
5. Minimum thickness recommended for reinforcements in hollow metal doors and frames: 0.1046" (2.66mm) unless otherwise noted.
6. Hold Open Arm closers are not permitted to be used on fire doors.

Preparation for Fasteners			
Fasteners	To Apply	Door or Frame	Drill Sizes
Sex nuts and bolts	Closer or Drop Plate	Hollow Metal	9/32" (7.00mm) thru; 3/8" (9.50mm) door face opposite to closer
		Aluminum or Wood	3/8" (9.50mm) thru:
#14 x 1-1/4" (32mm) type "A" S.M. Screw	Soffit Plate	Wood	7/32" (5.5mm)
		Aluminum	
1/4-20 Machine Screw		Metal	drill: #7 (.201") tap: 1/4-20
Thru bolts and grommet nuts	Optional	All	9/32" (7.00mm) thru; 3/8" (9.50mm) dia. x 3/8" (10mm) deep, door face opposite to closer

Experience a safer and more open world

Copyright © 2004, 2023, ASSA ABLOY Access and Egress Hardware Group, Inc. All rights reserved. Reproduction in whole or in part without the express written permission of ASSA ABLOY Access and Egress Hardware Group, Inc. is prohibited.

PR400 or PR1400 Series Door Closers - Sized 2 thru 6
PR4400 or PR4410 Series Door Closers - Multi-Size 1 to 6
Parallel Rigid Arm With or Without 488 Drop Plate
Non-Hold Open or Hold Open

Template Number:
7344-0251
Sheet: 1 of 1
Date: 12/23

ASSA ABLOY
1-855-557-5078
www.assaabloy.com