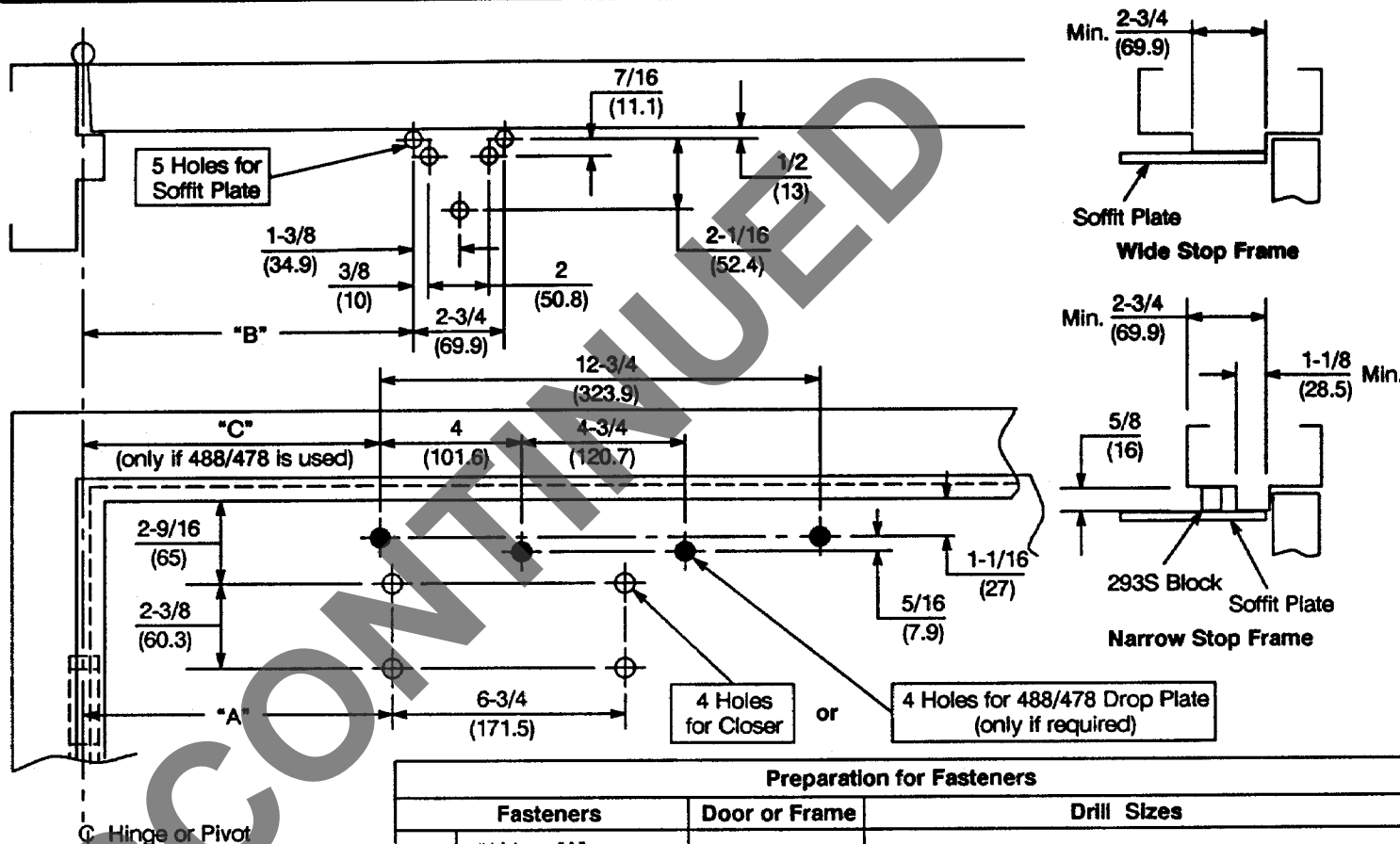


**Caution:** Door swing may be limited by door, frame, wall or hardware conditions.

**Notes:**

1. Do not scale drawing.
2. Left hand door shown.
3. Dimensions are in inches (mm).
4. Hollow metal doors require channel or box type reinforcement when thru bolt mount is specified.
5. Minimum thickness recommended for reinforcements in hollow metal doors and frames: .1046" (2.66mm) unless otherwise noted.



Door Opening	Dim. "A"	Dim. "B"	Dim. "C"
To 100°	8-5/8 (219)	9-1/8 (232)	8-3/8 (213)
101° to 120°	7-7/8 (200)	8-3/8 (213)	7-5/8 (194)
121° to 180°	6-3/4 (171)	7-1/4 (184)	6-1/2 (165)

Maximum hinge width 5" (127mm) for doors swinging beyond 150°.

Preparation for Fasteners			
	Fasteners	Door or Frame	Drill Sizes
Standard	#14 type "A" S.M. screw Arm: 1-1/4" (32mm) Closer: 2-3/4" (70mm)	Wood	7/32" (5.50mm)
		Metal	drill: #7 (.201") tap: 1/4-20
Optional	Sex nuts and bolts	Hollow Metal	9/32" (7.00mm) thru; 3/8" (9.50mm) on door or transom face opposite to closer
		Aluminum or Wood	3/8" (9.50mm) thru
	Thru bolts and grommet nuts	All	9/32" (7.00mm) thru; 3/8" (9.50mm) dia. x 3/8" (9.50mm) deep on door or transom face opposite to closer

**SCP400/SCP4400 Series Security Door Closer  
With or Without 478 Drop Plate  
Parallel Rigid Arm Non-Hold Open Installation**

**Yale**

Yale Commercial Locks and Hardware

www.yalecommercial.com

TEMPLATE NUMBER  
**80-7344-0621-010**

DATE  
**8-04**