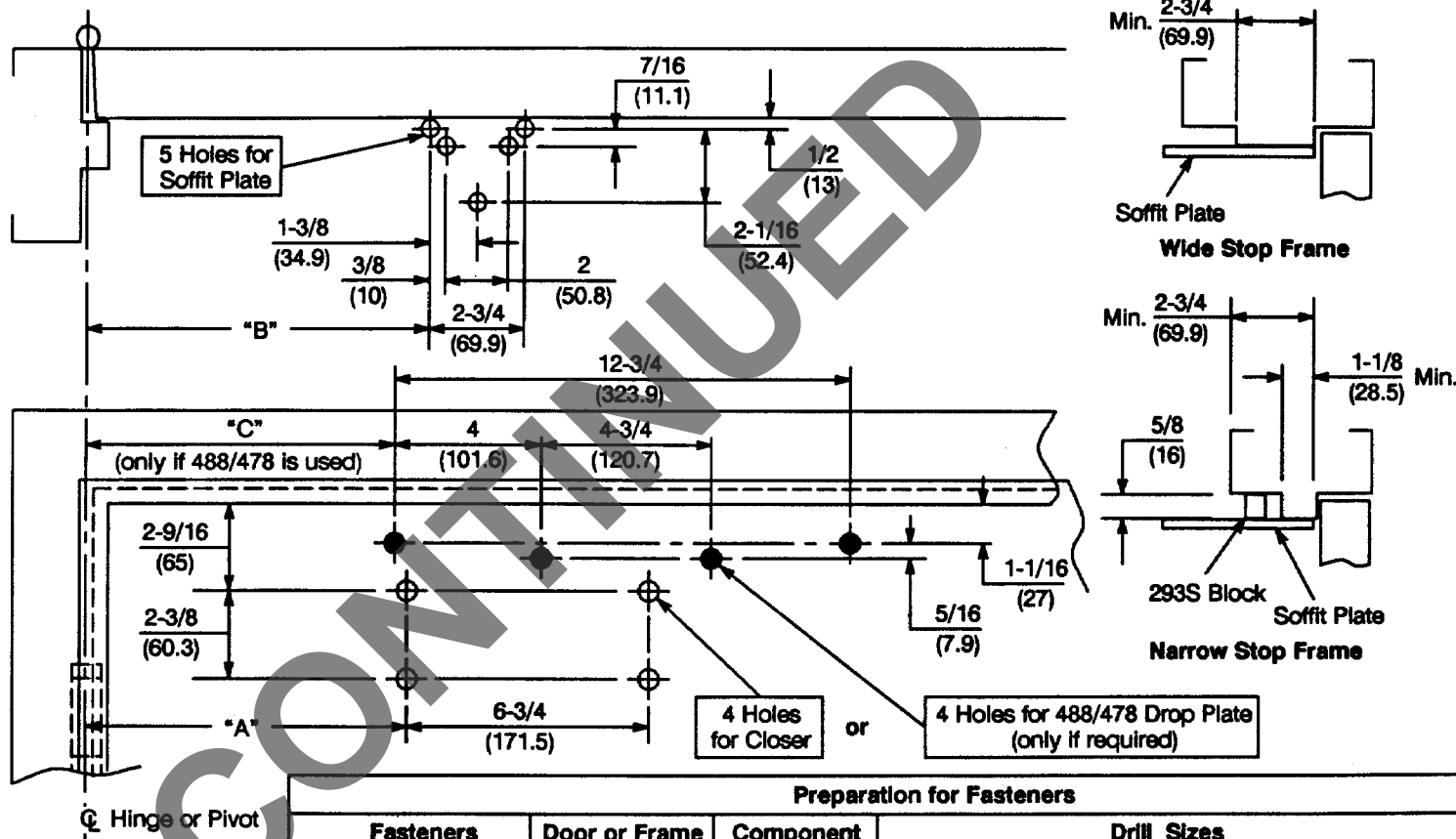


**Caution:** Door swing may be limited by door, frame, wall or hardware conditions.

**Notes:**

1. Do not scale drawing.
2. Left hand door shown.
3. Dimensions are in inches (mm).
4. Hollow metal doors require channel or box type reinforcement when thru bolt mount is specified.
5. Minimum thickness recommended for reinforcements in hollow metal doors and frames: .1046" (2.66mm) unless otherwise noted.
6. Closers with hold open arms, designated by a "T" suffix to the model number, are not permitted to be used on fire doors.



Door Opening	Dim. "A"	Dim. "B"	Dim. "C"
85°	10-1/8 (257)	10-5/8 (270)	9-7/8 (251)
90°	9-1/4 (235)	9-3/4 (248)	9 (229.6)
95°	8-5/8 (219)	9-1/8 (232)	8-3/8 (213)
100°	7-7/8 (200)	8-3/8 (213)	7-5/8 (194)
105°	7-3/8 (187)	7-7/8 (200)	7-1/8 (181)
110°	6-3/4 (171)	7-1/4 (184)	6-1/2 (165)

Preparation for Fasteners			
Fasteners	Door or Frame	Component	Drill Sizes
#14 type "A" S.M. screw Arm: 1-1/4" (32mm) Closer: 2-3/4" (70mm)	Wood	Arm	7/32" (5.50mm)
1/4-20 machine screw	Metal	Arm	drill: #7 (.201") tap: 1/4-20
Sex nuts and bolts (SNB)	Hollow Metal	Closer	9/32" (7.00mm) thru; 3/8" (9.50mm) on door or transom face opposite to closer
	Aluminum or Wood		3/8" (9.50mm) thru
Thru bolts and grommet nuts (TBGN)	All	Closer	9/32" (7.00mm) thru; 3/8" (9.50mm) dia. x 3/8" (9.50mm) deep on door or transom face opposite to closer

**SCP4020/SCP4420 Series CloserPlus Security Door Control  
With or Without "T" Suffix and With or Without 478 Drop Plate  
Holder Stop Arm Non-Hold Open or Hold Open Installation**

**Yale**

Yale Commercial Locks and Hardware  
www.yalecommercial.com

TEMPLATE NUMBER  
**80-7344-0625-010**

DATE  
**8-04**