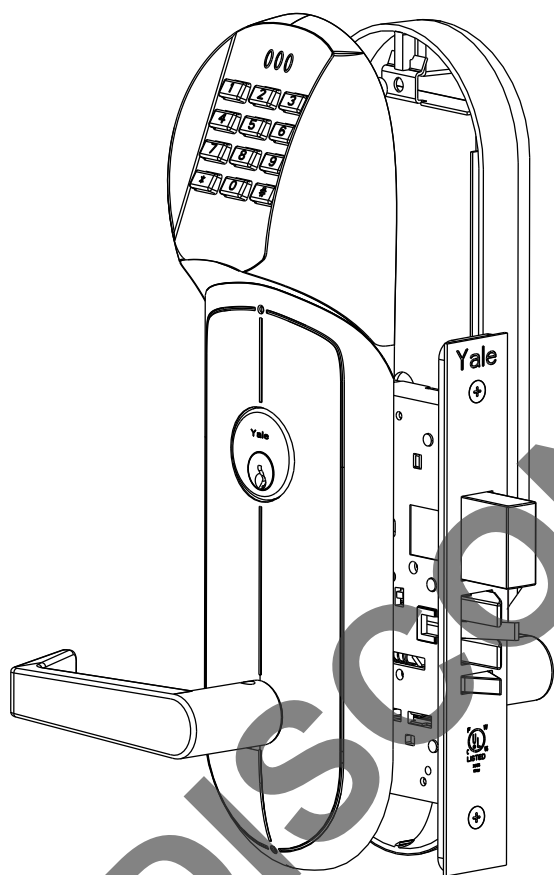




eiboss®

8850FL Series Mortise Installation Instructions



FEATURES

- Battery Operated (Hardwire Capable)
- Motorized Grade 1 Mortise Lock
- 94 User Code Capacity
- All Metal Escutcheon and Pushbuttons
- LED Function Indicator
- Weather Resistant, ADA Compliant 12-Button Keypad
- Modular Design (Simple Installation)
- Audible Pushbutton
- Patented (Pat # 7,091,429) Keypad Blinders
- Request to Enter Input
- Emergency, Supervisor, Passage, Lockout and Master Codes
- Deadbolt Monitoring Feature for Deadbolt Applications (8852FL & 8853FL).

Operational Modes

Secure

Normal locked state. Any assigned user code can gain access. Lock relocks automatically.

Lockout

Lockset will not accept any assigned user codes except for the Supervisor and Emergency Codes.

Passage

Maintains unlocked state. Relocks by entering passage code the second time.



Table of Contents

Section I List of components

A. Necessary Tools.....	2
B. Non-Deadbolt functions 8850FL-8851FL.....	3
C. Deadbolt functions 8852FL-8853FL.....	4

Section II Prepare the door

A. Determine hand of door.....	5
B. Mark centerline for lever position and door template.....	5
C. Drill holes in door.....	5
D. Mark frame for strike mortise cavity.....	5
E. Drill mortise cavities in door and frame.....	5
F. Install strike.....	5,6

Section III Handing the Mortise Lock

A. Handing the latchbolt.....	6
B. Handing the hubs.....	6

Section IV Installing Assembly on Door

8850FL & 8852FL

A. Installing keypad, long escutcheon and controller board.....	7
B. Installing lockbody, short escutcheon and levers.....	8

8851FL & 8853FL

C. Installing keypad and controller board.....	9
D. Installing lockbody, large escutcheon, small escutcheon and levers.....	10

8850FL, 8851FL, 8852FL, 8853FL

E. Installing the battery escutcheon and adjusting for appearance.....	11
F. Tightening the cylinder (if needed) and installing the armor front.....	12
G. Template for drilling a mortise pocket on the edge of a door.....	13

Section V Hardwire Options Diagram

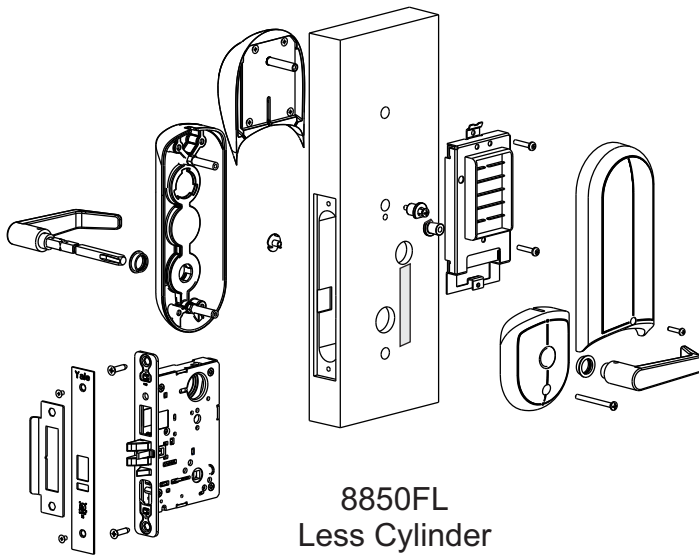
A. Hardwire options diagram.....	12
----------------------------------	----

Section I List of Components

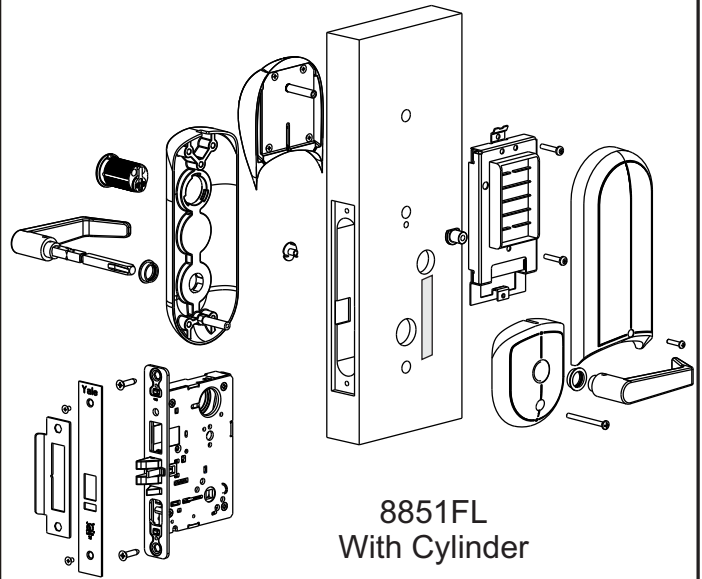
I-A Necessary tools

#2 Phillips screwdriver
#3 Phillips screwdriver
1/8" Allen wrench
Small flat blade screw driver
Hole saw set

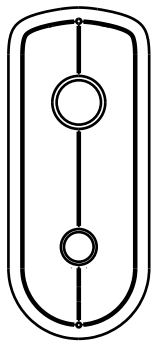
I-B Non-Deadbolt Functions



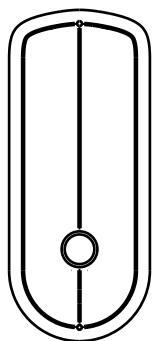
8850FL
Less Cylinder



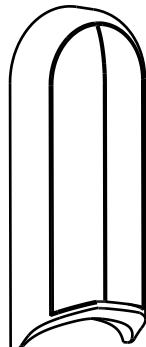
8851FL
With Cylinder



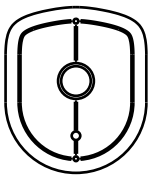
O/S Long
Escutcheon
W/ Cylinder



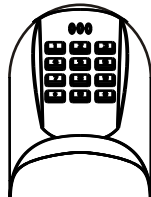
O/S Long
Escutcheon
W/O Cylinder



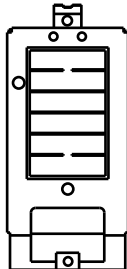
Battery
Escutcheon



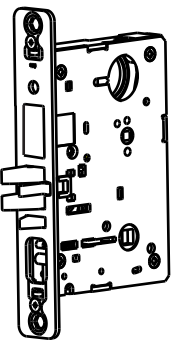
I/S Short
Escutcheon



Keypad
Assembly



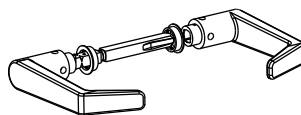
Controller
Board



Mortise
Lockbody



Cylinder



Spindle Asm



Grounding
Strip

Cylinder Chart	
Door Thickness	Cylinder Size
1-3/4"	1-3/4"
2"	1-3/4"
2-1/4"	2"

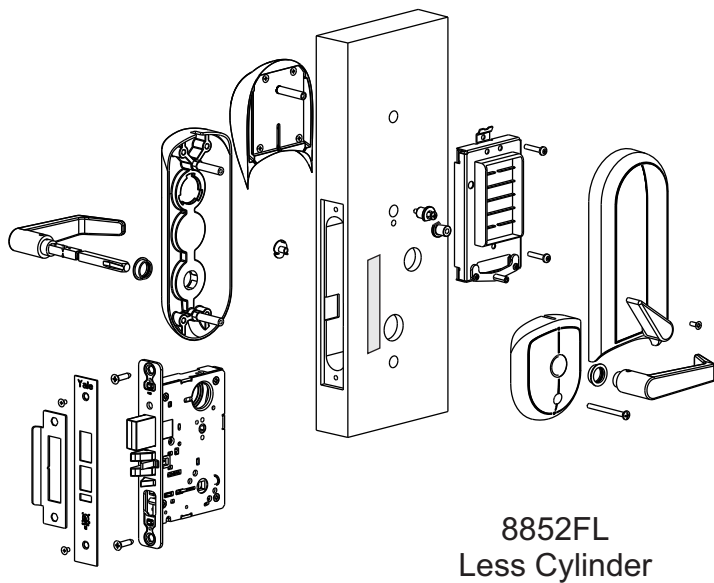
SCREW PACK

DESCRIPTION	Qty
1/4" TEE NUT	1
#10-32 X 1" (FOR THICKER DOORS)	2
#8-32 X 5/16"	} BATTERY ESC SCREWS 1
#8-32 X 3/4"	
#10-24 X 1-1/4"	1
#10-24 X 2" (2-1/4" FOR THICKER DOORS)	1
LONG PLASTIC SPACER	1
SHORT PLASTIC SPACER	1

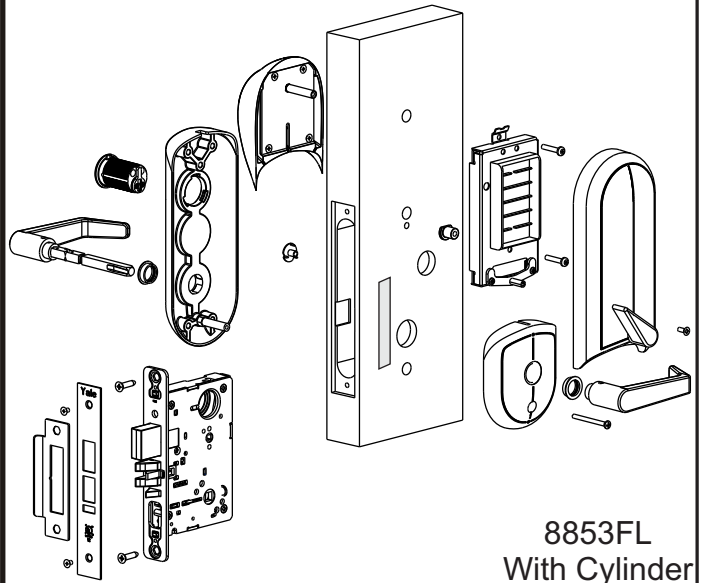
STRIKE PACK

DESCRIPTION	Qty
STRIKE	1
ARMOR FRONT	1
COMBINATION SCREW	4
ARMOR FRONT SCREW	2

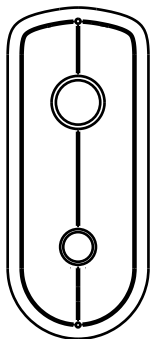
I-C Deadbolt Functions



8852FL
Less Cylinder

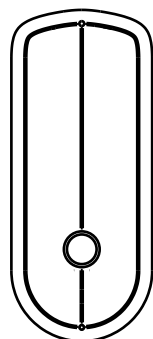


8853FL
With Cylinder

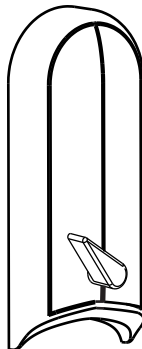


O/S Long
Escutcheon
W/ Cylinder

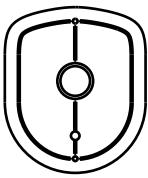
or



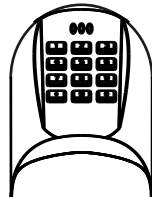
O/S Long
Escutcheon
W/O Cylinder



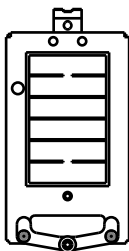
Battery
Escutcheon



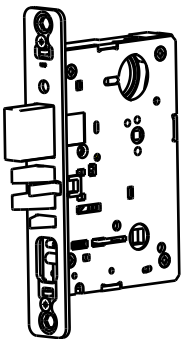
I/S Short
Escutcheon



Keypad
Assembly



Controller
Board



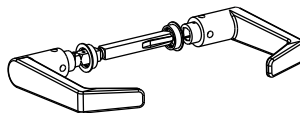
Mortise
Lockbody



Cylinder



Grounding
Strip



Spindle Asm

Cylinder Chart	
Door Thickness	Cylinder Size
1-3/4"	1-3/4"
2"	1-3/4"
2-1/4"	2"

SCREW PACK

DESCRIPTION

Qty



1/4" TEE NUT

1



#10-32 X 1"
(FOR THICKER DOORS)

2



#8-32 X 5/16" } BATTERY

1



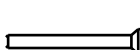
#8-32 X 3/4" } ESC SCREWS

1



#10-24 X 1-1/4"

1



#10-24 X 2"
(2-1/4" FOR THICKER DOORS)

1



LONG PLASTIC SPACER

1



SHORT PLASTIC SPACER

1

STRIKE PACK

DESCRIPTION

Qty



STRIKE

1



ARMOR
FRONT

1



COMBINATION
SCREW

4



ARMOR
FRONT
SCREW

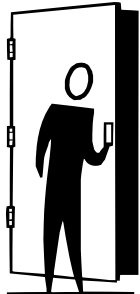
2

4

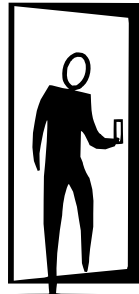
Section II Prepare the Door

A) Determine hand of door

Face the door from the outside to determine its hand. Please note the outside is either the key side of an entrance door or the corridor side of a room door. The outside of a single communication door is the side opposing the hinges. The outside of a twin communicating doors is the space between the doors.



Left Hand Reverse:
Hinges on left, opens outward. For handed locks, specify LHR.



Left Hand:
Hinges on left, opens inward. For handed locks, specify LH.



Right Hand:
Hinges on right, opens inward. For handed locks, specify RH.



Right Hand Reverse:
Hinges on right, opens outward. For handed locks, specify RHR.

B) Mark centerline for lever position and door template

1. Draw a horizontal centerline for the lock lever/spindle on both sides of door at desired height above finished floor line. Standard height for horizontal centerline is 39-15/16" above finished floor.
2. Compare the lock function number being installed with hole chart (See Template) to determine the holes to be marked.
3. Position the installation template on the door so that the horizontal centerline lines up with the marked horizontal line on the door, and the desired edge of the template lines up with the edge of the door.
4. Mark the holes to be drilled using a scribe, center punch, or nail on the inside and outside of door. To avoid shifting of the template, it may be taped to the door during this step.

C) Drill holes in door

1. Bore marked trim holes (step B4). To avoid splintering wood, bore thru holes from both sides of door.

D) Mark frame for strike mortise cavities

1. Mark the vertical position of strike on jamb using the reference centerline on installation template. Mark location of strike lip. (FIRST DETERMINE IF SILENCERS ARE TO BE USED) To locate horizontal centerline of strike, take half the door thickness PLUS the thickness of silencer (if used). Use this dimension to locate the strike centerline from the doorstop. (See Fig. 1, page 6)

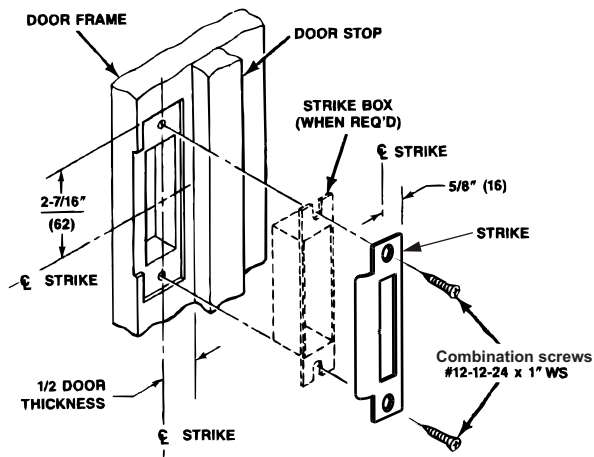
E) Drill Mortise Cavities in door and frame

1. Align mortise pocket template on edge of door using the spindle height mark.
2. Mark door edge for lock body attaching screws and mortise pocket.
3. Mortise door edge for lock body 4½" deep. See page 14 for Template.
4. Drill pilot holes for attaching screws.
5. Slide lock body into cavity and attach using the combination attaching screw. Install armor front and use as template. Mark outline.
6. Mortise door edge for lock front (7/32") deep.
7. Mortise jamb for strike (3/32" deep). Be sure to mortise 1" (25mm) deep to accommodate lock bolts or strike

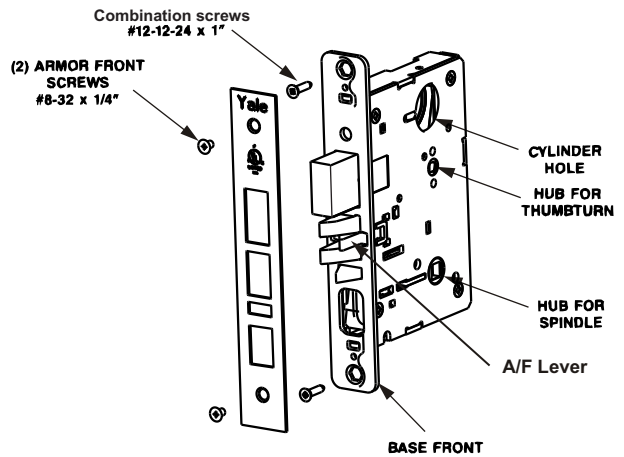
F) Install Strike

1. Attach strike to jamb using two #12 combination attaching screws. (See Fig. 1, page 6).

Section II Prepare the Door (CONTINUED)



(Fig.1) 8800 Series Strike Shown



(Fig.2) 8800 Series Lock Shown

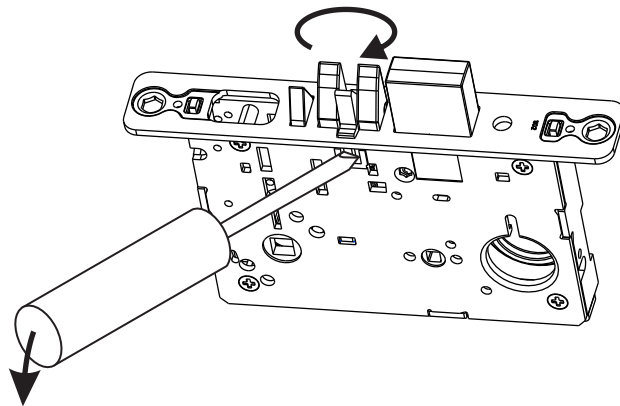
Section III Handing the Mortise Lock

Handing the Latchbolt

1. Insert flat blade screwdriver into cover slot.
2. Pull back on screwdriver until latchbolt extends past base front and rotate the head to the desired position.

Handing the Hubs

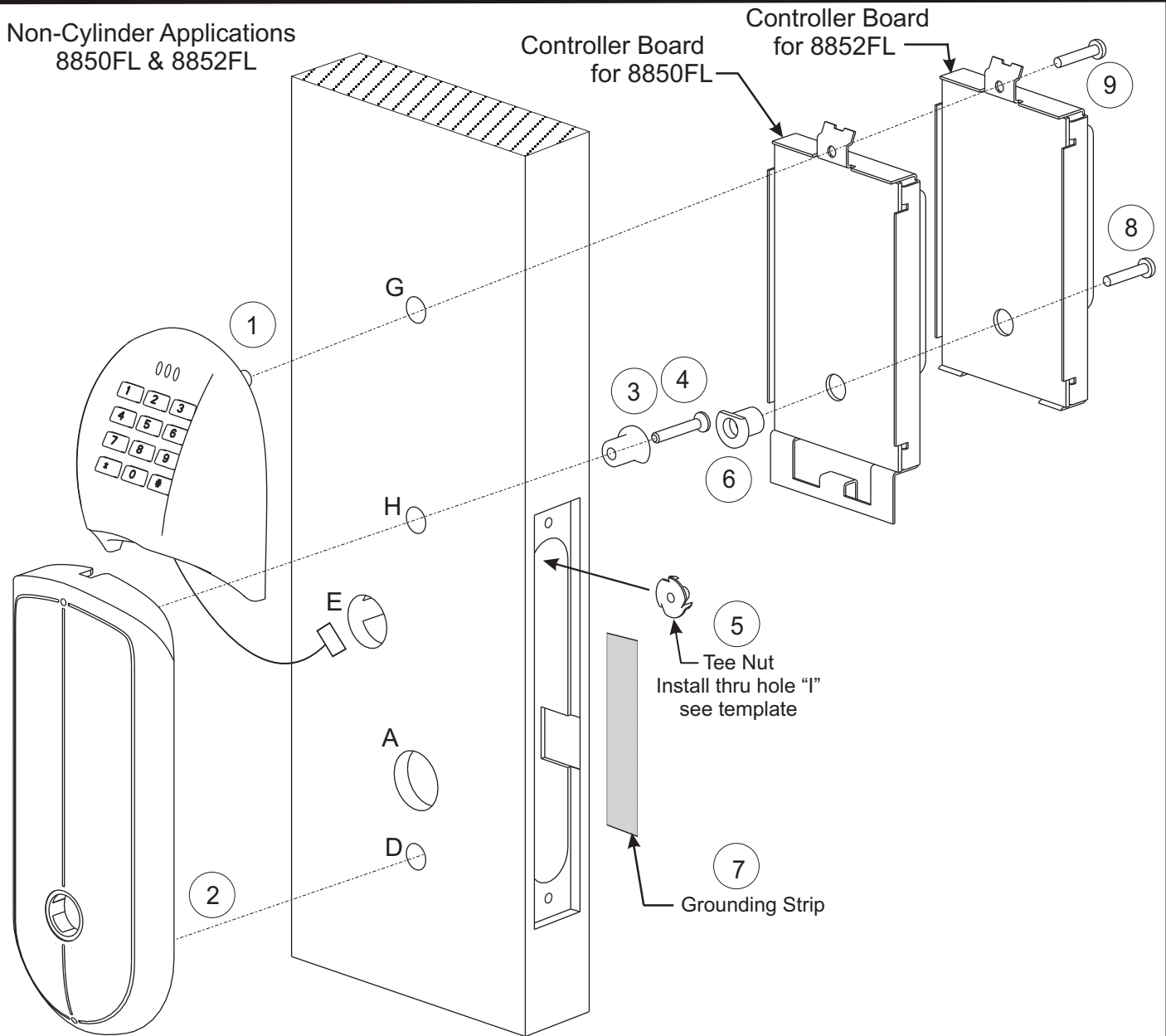
1. Locate RED MARK on locking piece.
2. Push toggle button slide away from "square spindle hole".
3. With blade screw driver push RED MARK on slide nearest "square spindle hole".
4. RED MARK indicates locked side!



Section IV Installing Assembly on Door

IV-A Installing keypad, long escutcheon and controller board

Non-Cylinder Applications
8850FL & 8852FL



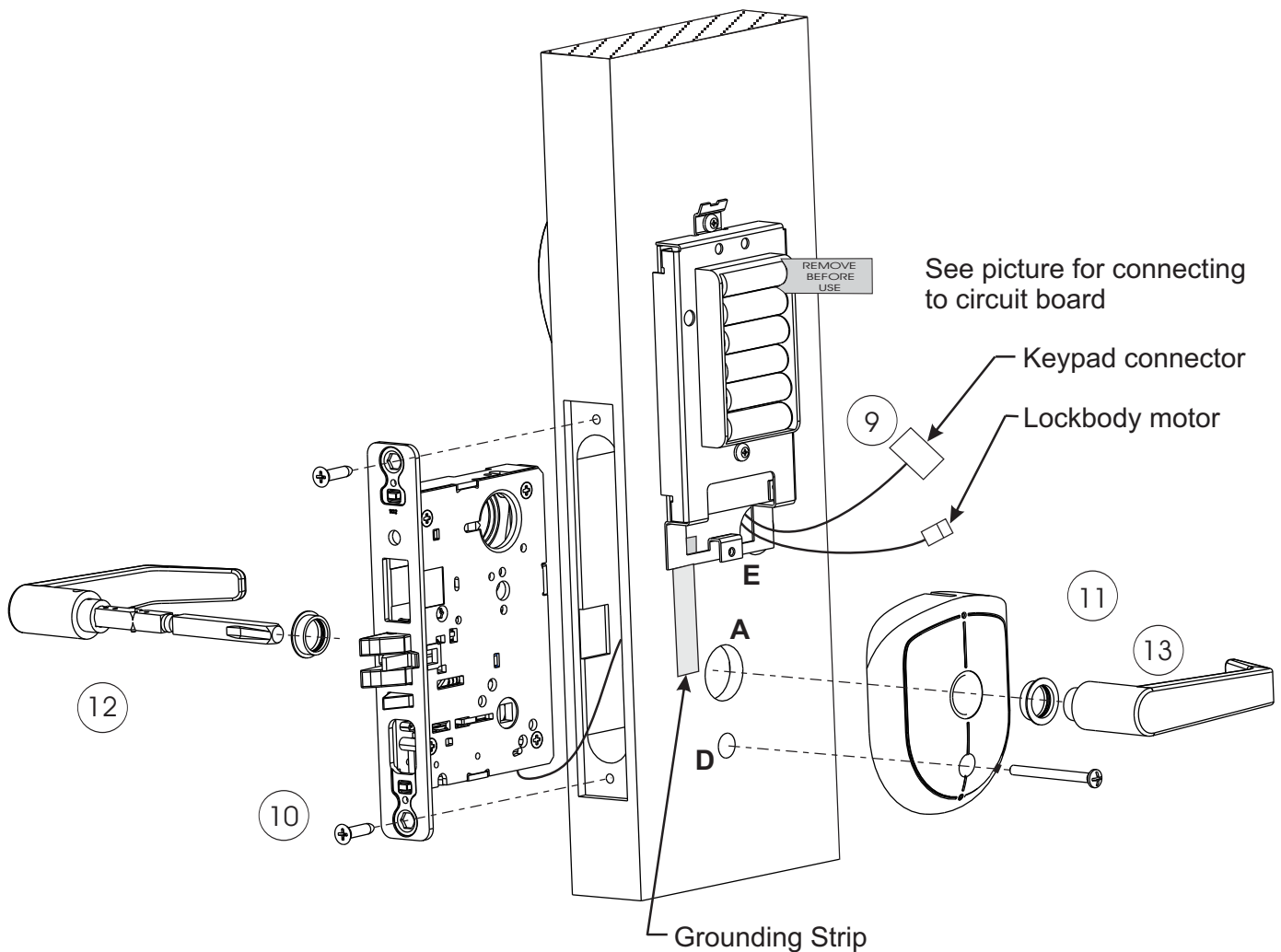
Steps

1. Install keypad housing:
 - a) Route keypad harness thru hole "E", all the way thru door.
 - b) Route keypad post thru hole "G".
2. Install O/S long escutcheon posts in holes "D" and "H". This will hold the keypad in place.
3. Install short plastic spacer with flat down in hole "H" on inside of door.
4. Securely fasten the #10-24 X 1-1/4" screw thru the short plastic spacer.
5. Install the tee nut from the inside of the mortise pocket thru hole "I". See template.
6. Install long plastic spacer with flat up in the back of the controller board.
7. Secure grounding strip to door making sure the strip connects the controller board to the I/S Short Esc.
8. Loosely fasten the controller board to the tee nut using #10-32 X 1" screw thru the long plastic spacer.
9. Loosely fasten the top of the controller board using #10-32 X 1" screw thru hole "G".

7

IV-B Installing lockbody, short escutcheon and levers

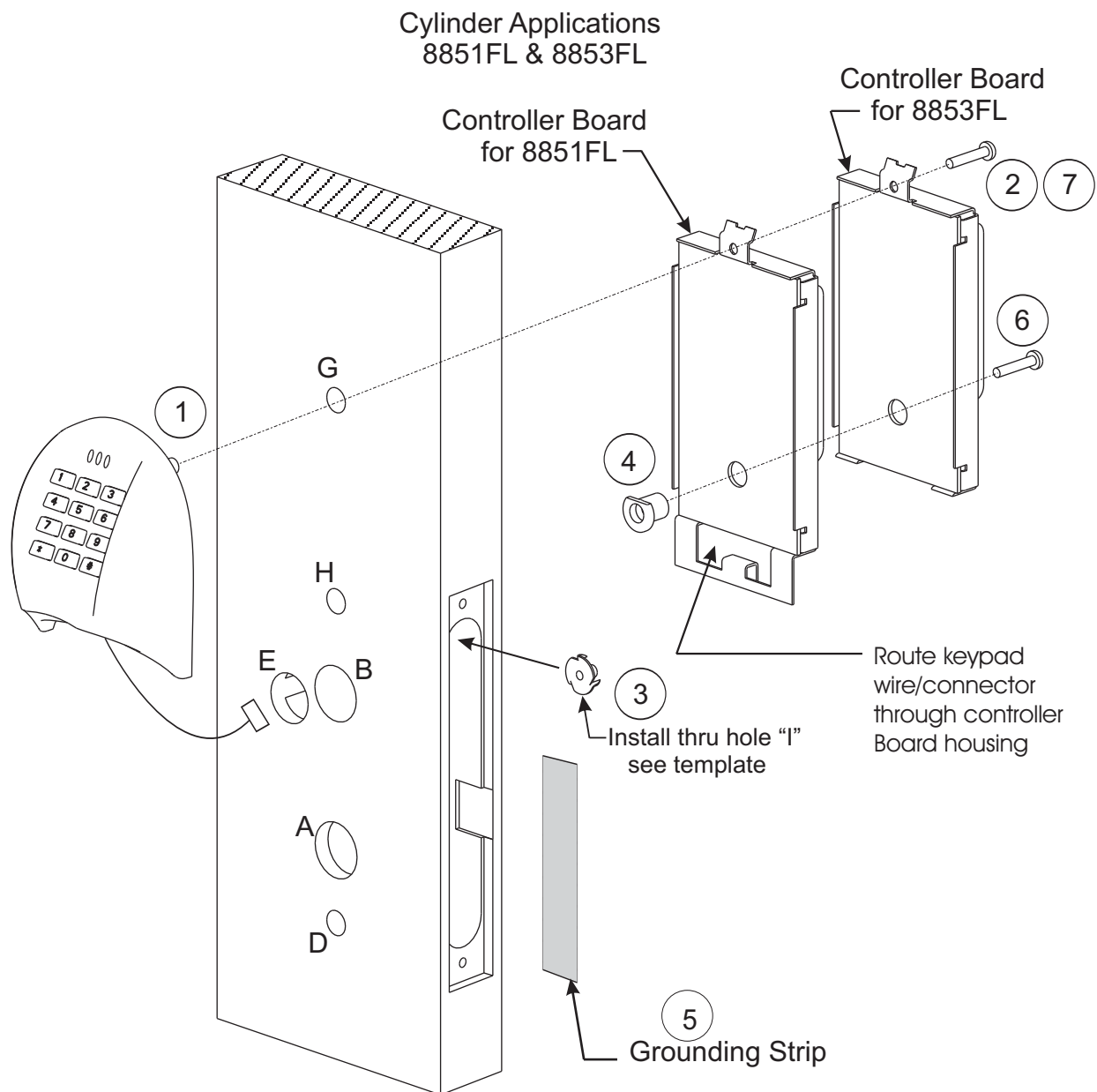
Non-Cylinder Applications 8850FL & 8852FL



Steps

9. Route all lockbody harnesses thru the mortise pocket and thru hole "E".
10. Loosely fasten lockbody to door using combination screws.
11. Install I/S short escutcheon by loosely attaching the #10-24 X 2" screw thru hole "D" and to the post of the O/S long escutcheon.
12. Installing the spindle assembly thru the lock. **Loosen the set screw on the inside lever and remove inside lever before installing thru lock.** Be sure that the lever on the pinned end of the assembly goes on the outside of the door and the ramp of the inside spindle goes towards the set screw on the inside lever.
13. Install the inside lever and securely tighten the set screw.
14. Install harness connectors to the controller board (see Wiring Diagram on page 12).
15. Skip to page 11.

IV-C Installing keypad and controller board

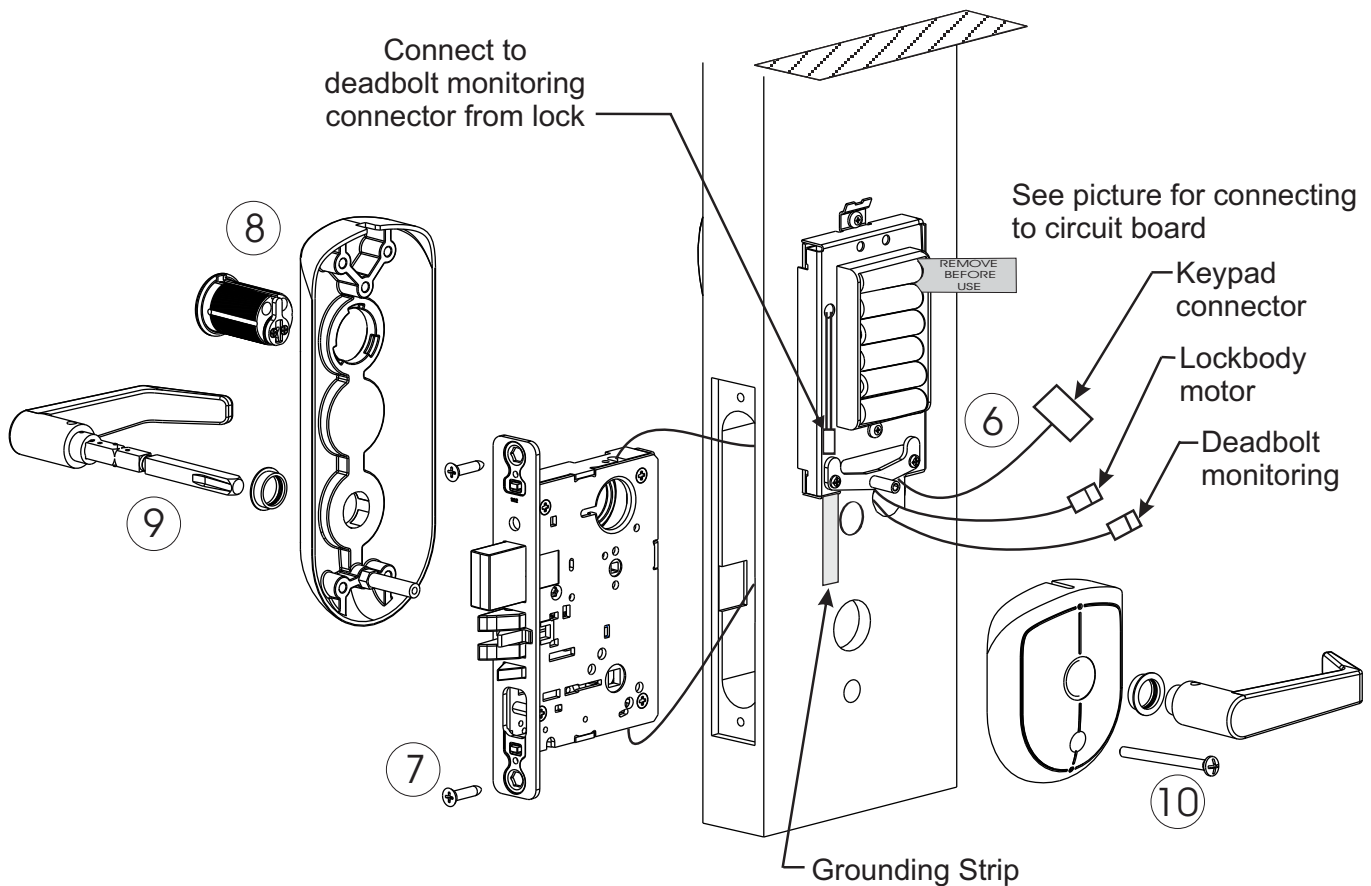


Steps

1. Install keypad housing:
 - a) Route keypad harness thru hole "E", all the way thru door
 - b) Route keypad post thru hole "G".
2. Loosely fasten the #10-32 X 1" screw thru hole "G" and into the keypad post.
3. Install the tee nut from the inside of the mortise pocket thru hole "I". See template.
4. Install the long plastic spacer (with flat any orientation) in the back of the controller board.
5. Secure grounding strip to door making sure the strip connects the controller board to the I/S Short Esc.
6. Loosely fasten the controller board to the tee nut using #10-32 X 1" screw thru the long plastic spacer.
7. Loosely fasten the #10-32 X 1" screw thru hole "G" and into the keypad post.

IV-D Installing lockbody, short escutcheon and levers

Cylinder Applications 8851FL & 8853FL



Steps

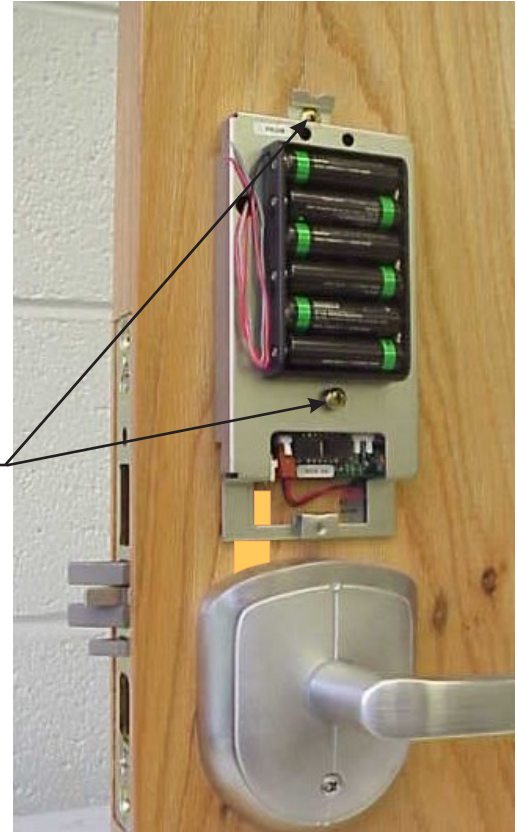
6. Route all lockbody harnesses thru the mortise pocket and thru hole "E".
7. Loosely fasten lockbody to door using combination screws.
8. Install the bottom post of O/S long escutcheon thru hole "D" and attach the cylinder to the lockbody thru hole "B".
9. Install the I/S short escutcheon by loosely fastening the #10-24 X 2" screws thru hole "D" and to the post of the O/S long escutcheon.
10. Install the spindle assembly thru the lock. **Loosen the set screw on the inside lever and remove inside lever before installing thru lock.** Be sure that the lever on the pinned end of the assembly goes on the outside of the door and the ramp of the inside spindle goes towards the set screw on the inside lever.
11. Install the inside lever and securely tighten the set screw.
12. Install harness connectors to the controller board (See Wiring Diagram on page 12).
For deadbolt monitoring connection see picture above.
13. Skip to page 11.

IV-E Installing the battery escutcheon and adjusting for appearance

All Applications

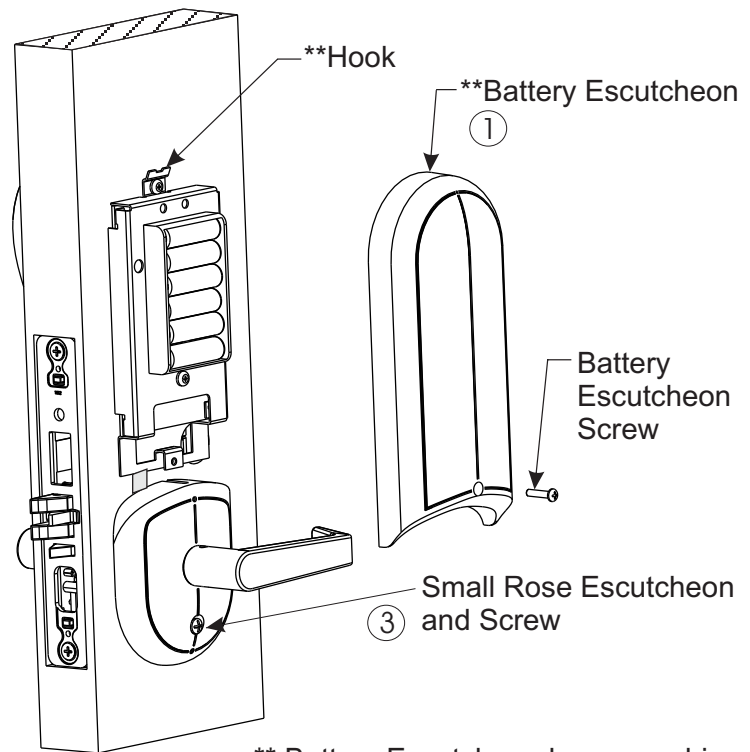


- ② Minimize gap between keypad and escutcheon by gently pushing them together, then tighten both controller board screws.



Installing the Battery Escutcheon and minimizing the clearance between the Battery Escutcheon and the Small Rose Escutcheon.

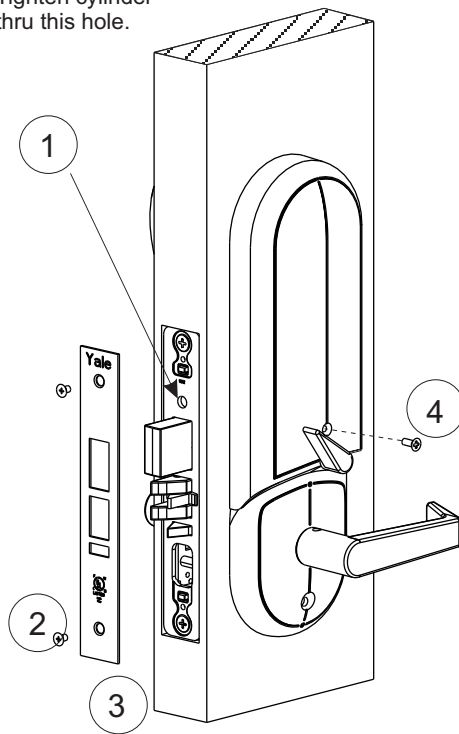
1. **Dry fit the Battery Escutcheon to the Small Rose Escutcheon.
NOTE: IT IS VERY IMPORTANT TO KEEP WIRES FROM GETTING PINCHED WHILE ATTACHING BATTERY COVER.
2. Check the clearance where the two meet, see top picture. If the clearance is acceptable tighten the Battery Escutcheon screw.
3. If the clearance is too great loosen the Small Rose Escutcheon screw then push up and re-tighten the screw. Recheck clearance. If the clearance is still not acceptable remove Battery Escutcheon and loosen the two Controller Board screws and adjust the controller board up or down. Re-tighten controller board screws and refer to step #2.



** Battery Escutcheon has a machined slot that engages the hook at the top of the Controller Board prior to mating up with Rose Escutcheon.

IV-F Tightening the cylinder (if needed) and installing the armor front

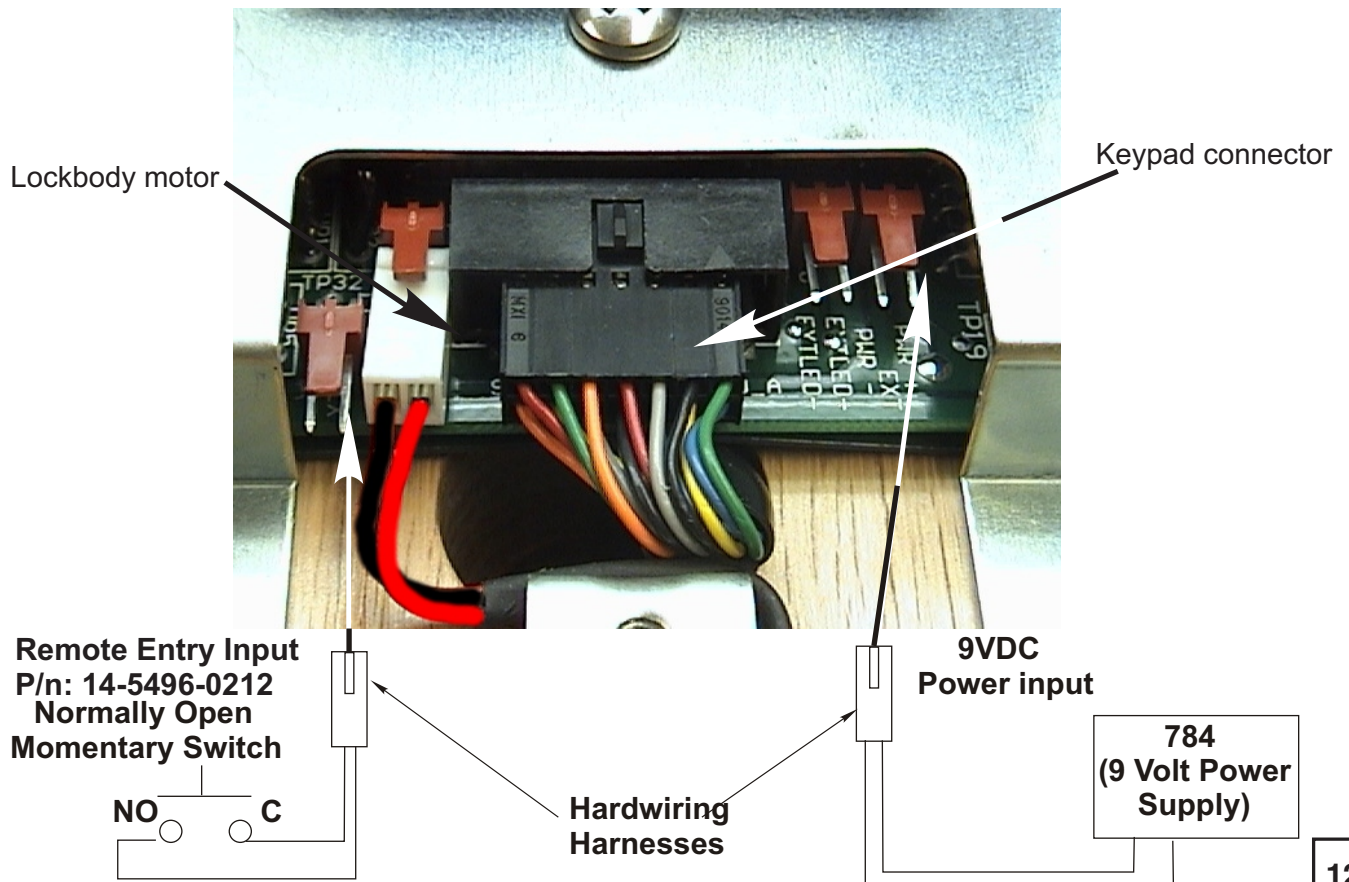
Tighten cylinder
thru this hole.



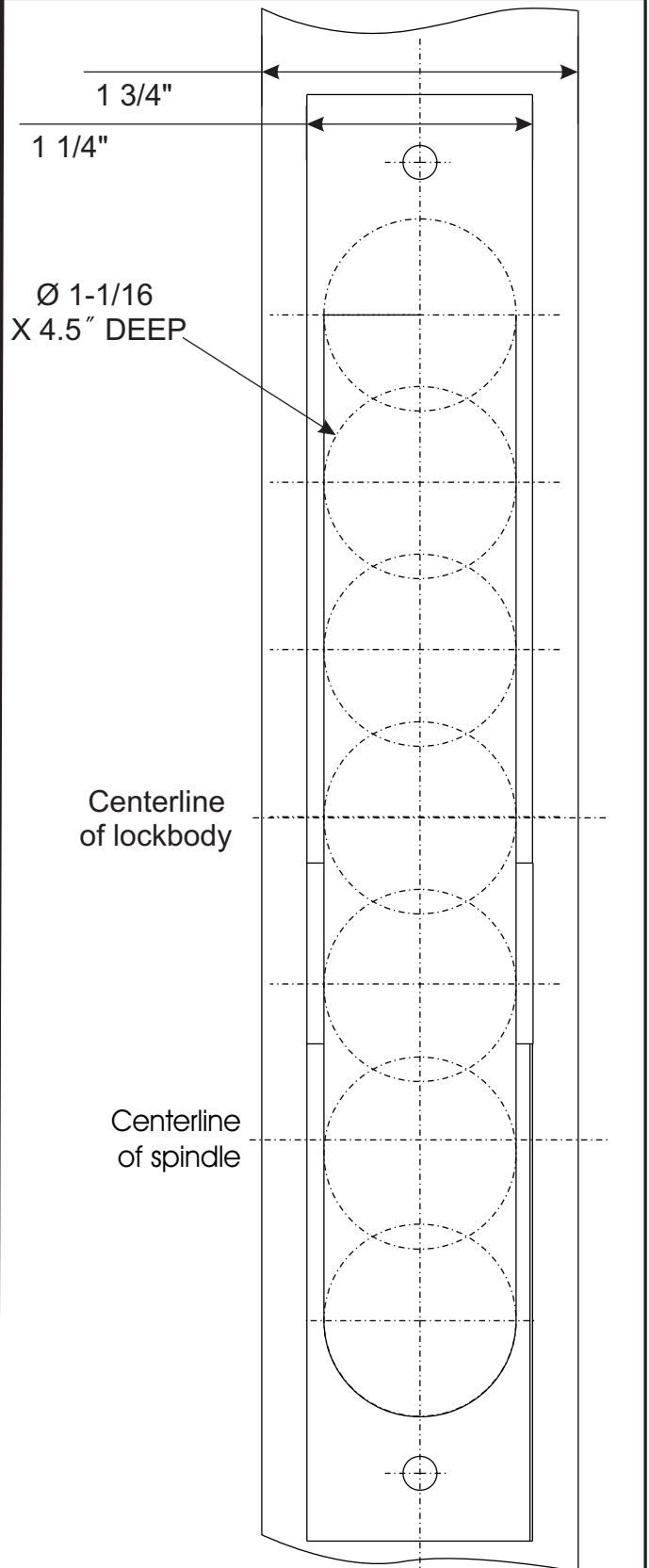
1. Align the cylinder face to desired orientation and tightened the cylinder thru the hole indicated above.
2. Securely fasten the lockbody screws.
3. Install the armor front with the 2 #10 x 21 5/16" screws provided.
4. Fasten battery cover screw.

Section V WIRING DIAGRAM

V-A Wiring diagram



IV-G Template for drilling a mortise pocket on the edge of the door



Finish Care
 This lockset is designed to provide the highest standard of product quality and performance. Care should be taken to insure a long-lasting finish. When cleaning is required use a soft, damp cloth. Using lacquer thinner, caustic soaps, abrasive cleaners or polishes could damage the coating and result in tarnishing.

If installation instructions are not followed this may result in damage to the lock and void the factory warranty. Removing cover screws voids lock body warranty. Any retrofit or other field modification to a fire rated opening can potentially impact the fire rating of the opening, and Yale Locks & Hardware makes no representations or warranties concerning what such impact may be in any specific situation. When retrofitting any portion of an existing fire rated opening, or specifying and installing a new fire-rated opening, please consult with a code specialist or local code official (Authority Having Jurisdiction) to ensure compliance with all applicable codes and ratings.

Yale Locks & Hardware

Product Support Tel 800.810.WIRE (9473) • www.yalelocks.com

Yale Locks & Hardware is a division of Yale Security Inc., an ASSA ABLOY Group company.

Yale® and eBoss® are registered trademarks of Yale Security Inc., an ASSA ABLOY Group company. Other products' brand names may be trademarks or registered trademarks of their respective owners and are mentioned for reference purposes only. These materials are protected under U.S. copyright laws. All contents current at time of publication.

Yale Security Inc. reserves the right to change availability of any item in this catalog, its design, construction, and/or its materials.

Copyright © 2005, 2012 Yale Security Inc., an ASSA ABLOY Group company.

All rights reserved. Reproduction in whole or in part without the express written permission of Yale Security Inc. is prohibited.