

DISCONTINUED



ACCENTRA

ASSA ABLOY

ASSA ABLOY is transitioning the Yale Commercial brand to ACCENTRA. This affects only the brand name; the products and product numbers will remain unchanged. Prior to May 20, 2024, products may be shipped either as Yale Commercial brand or ACCENTRA brand. Products shipping after May 20, 2024, will be branded ACCENTRA.



Copyright © 2017 ASSA ABLOY Inc. All rights reserved.

Accessories Make a Difference

ASSA ABLOY

Selecting the right high-quality accessories for your door openings really matters! Markar, McKinney, Pemko and Rockwood product solutions can resolve your door opening challenges. With specialized products and expert advice you will see the difference in no time!

For more information contact your local ASSA ABLOY Door Security Solutions representative at www.assaabloydss.ca.

The global leader in door opening solutions

04

FLASHship™

General Information
Contacts
Terms & Conditions

07

Yale®

Mortise Locks and
Cylinders
Cylindrical Locks
Cylindrical Deadbolts
Exit Devices
Exit Device Trim,
Mullions and Cylinders
Door Closers

22

Architectural Door Accessories

McKinney
Spring Hinges
3 & 5 Knuckle Hinges
MacPro® & ElectroLynx®
Hinges

Rockwood
Door Stops
Dust Proof Strikes,
Roller Latches and Door
Knockers/Viewers

27

Norton

Mechanical and
Electromechanical Door
Closers

29

Rixson®

Pivot Sets and
Intermediate Pivots
Checkmate® Door
Holders and Releases
Electromagnetic Door
Holder/Releases

32

HES

Electric Strikes, Options
and Accessories

35

Securitron

Electromagnetic Locks,
Accessories, Power
Transfers, Timers,
Keyswitches, Push
Buttons and Accessories

38

Adams Rite

Deadlocks, Deadlatches,
Flushbolts and Pivots
Exit Devices, Electrified
Hardware and Electric
Strikes
Trims and Accessories

42

Order Forms



FLASHship™

Welcome to our FLASHship program.

FLASHship, offering select products from eight brands with 24-hour shipping is the latest ASSA ABLOY program designed to help you in doing business better.

Use FLASHship to help reduce inventory, improve your lead times and control your freight costs – and simplify ordering! Products from eight of the ASSA ABLOY brands are available for order on one order form, and you receive one invoice. You can even place your order online for quickest response.

Check out pages 7 - 41 for a listing of all the products available through this program.

Contact us with any questions at 1-800-461-3007 or speak with your local ASSA ABLOY Door Security Solutions Canada representative.

FLASHship™ Program Information

The ASSA ABLOY FLASHship program allows the convenience of placing a single order for Yale architectural hardware plus accessory products from eight ASSA ABLOY brands. This program contains selected popular products from Adams Rite, HES, McKinney, Norton, Rixson, Rockwood, Securitron and Yale all shipping from one of our FLASHship locations within 24 hours.

QUALIFICATIONS

To place a qualifying order for the FLASHship program:

- A. Use the "FLASHship Order Form" on pages 42-43 and indicate product by FLASHship part number as stated in the FLASHship catalog, or
- B. Use your own purchase order with "FLASHship Program" prominently indicated. Also, products must be indicated by their FLASHship part number, or
- C. Enter FLASHship order by using the on-line order entry process.

ONLINE ORDER ENTRY

FLASHship orders can be entered by using our convenient online order entry system. Available on the ASSA ABLOY extranet, the dedicated FLASHship icon takes the user directly to the web-based form that offers easy-to-use drop-down menus to assist with product search and selection.

Order Form

Please use the form on pages 42-43 when placing orders for FLASHship products.

Lead Time

Lead time is 24 hours from receipt of order. We reserve the right to limit quantities.

Only items printed in this current publication will be given 24-hour lead times for shipping.

Part Numbers

Specific part numbers are assigned to each unique configuration. These FLASHship part numbers should be included on the purchase order to ensure ease of processing.

Mixed Orders

To ensure expedited processing, FLASHship products must be submitted on a separate purchase order from non-FLASHship products. Any orders received including items that are not currently published in the FLASHship offering will be returned to the customer for re-submittal.

The website for Online Order Entry is www.assaabloydss.com/extranet and then click the FLASHship icon. Contact your customer service representative to set up online order entry access and training.



Contacts

Customer Service

For FLASHship™ customer service questions and/or issues, call: 800-461-3007

Hours of Operation

Customer Service: 8:00 am – 7:00 pm EST

FLASHship Territories



Terms and Conditions

Minimum Order

Minimum invoice is \$50.00 net product value.

Quotes

Quoted projects do not qualify for the FLASHship™ program. Standard buying program discounts only.

Freight

All orders are shipped PPD factory/warehouse, except as expressly provided below. When delivered to the Transportation Company, the Purchaser assumes the risk of loss or damage in transit.

A minimum freight and handling charge of 5% will be charged on all orders below \$500.00 net.

Expedited shipping options – If the customer requests an expedited method of shipment such as “Next Day Air” the charges will be prepaid by ASSA ABLOY Door Security Solutions Canada and the full rate for the service, as published by the carrier, will be added to the customer’s invoice.

Packing – ASSA ABLOY Door Security Solutions Canada will pack, mark and ship the products according to its standard procedures for shipment, unless the parties agree, in writing, that ASSA ABLOY Door Security Solutions Canada will comply with any special instructions provided by the customer. Special instructions must be submitted, in writing, at time of order placement. Compliance with special instructions may result in an increased price.

Delivery

Orders will be acknowledged and given a scheduled delivery date. Standard delivery times apply. Complete information is required to process all orders. Orders with insufficient information for processing (i.e. part numbers) may be subject to extended lead times which are relative to the time required in obtaining the necessary information for order processing.

ASSA ABLOY Door Security Solutions Canada will not be liable for back charges incurred based on availability of product or as a result of delays in delivery caused by insufficient information required to process an order. ASSA ABLOY Door Security Solutions Canada will not be held responsible for delays in delivery caused by strikes, fires, floods or any other causes beyond our control, including the delivery of material to us. Under no circumstances shall ASSA ABLOY Door Security Solutions Canada be liable or accountable for consequential damages due to failure of delivery.

Changes/Cancellations

Due to the promptness of delivery, no changes or cancellations can be accepted.

Prices

All shipments will be made at prices prevailing at time of shipment.

Terms

1% tenth of the month following, net thirty (30) days after statement date.

Returned Goods

All FLASHship products returned as “Goodwill” must meet the following criteria to be considered for return:

- Be in original, unmarked and undamaged cartons
- Shipped and invoiced within the previous 30 days from return request
- Return requests must be approved by customer service prior to return

No restocking fee will apply. Upon receipt and verification that the returned merchandise meets the foregoing conditions, a credit will be issued for the original invoice amount.

Consult the current Price Books for pricing information and a complete list of Terms & Conditions.

Warranties

All standard limited warranties apply. Consult current Price Books for a complete list of warranty information.

Copyrights and Patents

All products in ASSA ABLOY Door Security Solutions Canada catalogues, brochures and price lists are either patented, Copyrighted or registered by ASSA ABLOY Door Security Solutions Canada.



Smooth Operation, Stylish Design



With a range of functions and features, smooth, quiet operation and an attractive modern look, the new 6000 Series Exit Device from Yale Commercial Solutions provides stylish life safety to any facility. The durable, ANSI/BHMA Grade 1 certified device comes in five finishes to suit any décor, and is perfect for both new construction or retrofit applications.

**Bringing robust, modern solutions
to any commercial facility,
Yale Works for YouSM.**

www.yalelocks.com

Blank Page



Augusta - AUR

8800FL Series Grade 1 Mortise Locks Sectional Trim

Design	Model #	Finish	Hand	Strike	Cylinder	FLASHship™ #	Approx. Wt. Each (Lbs)
8801FL - Passage or Closet Latch							
AUR	8801FL	626	RH	2815	—	110704	6
8802FL - Privacy, Bedroom or Bath Lock							
AUR	8802FL	626	RH	2815	—	110726	6
8805FL - Storeroom or Closet Lock							
AUR	8805FL	626	RH	2815	Less Cylinder	110752	6
8807FL - Entry Lock							
AUR	8807FL	626	RH	2815	Less Cylinder	110803	6
8808FL - Classroom Lock							
AUR	8808FL	626	RH	2815	Less Cylinder	110853	6
8822FL - Dormitory or Exit Lock							
AUR	8822FL	626	RH	2815	Less Cylinder	684499	7
8847FL - Apartment Corridor Door Lock							
AUR	8847FL	626	RH	2815	Less Cylinder	110942	7

Mortise Cylinders and Keyblanks

Model #	Description	Key Section	Finish	Collar Size Included	FLASHship™ #	Approx. Wt. Each (Lbs)
Mortise Cylinders						
2153 x 1-1/8"	6-Pin, Keyed Random	GA	626	1765.250	102416	0.4
2553 x 1-1/8"	6-Pin, Schlage® Keyed Random	C	626	1765.250	2680283	0.4

Model #	Description	Key Section	FLASHship™ #	Approx. Wt. Each (Lbs)
Keyblanks				
RN11	6-Pin Blank	GA	111159	0.1

Fax 905-738-9210, email FLASHshiporders.dss.ca@assaabloy.com or use Online Order Entry at www.assaabloydss.com/extranet by clicking the FLASHship™ icon

Note: FLASHship™ reserves the right to limit quantities.

All products in ASSA ABLOY Door Security Solutions Canada catalogues, brochures and price lists are either patented, copyrighted or registered by ASSA ABLOY Door Security Solutions Canada.

An ASSA ABLOY Group brand

ASSA ABLOY



Augusta - AU



Pacific Beach - PB

5400LN Series Grade 1 Cylindrical Locks, 2-3/4" Backset

Design	Model #	Finish	Strike	Cylinder	FLASHship™ #	Approx. Wt. Each (Lbs)
5401LN - Passage or Closet Latch						
AU	5401LN	626	497 ANSI	—	110003	6
PB	5401LN	626	497 ANSI	—	109998	6
5402LN - Privacy, Bedroom or Bath Lock						
AU	5402LN	626	497 ANSI	—	110019	6
PB	5402LN	626	497 ANSI	—	110021	6
5405LN - Storeroom or Closet Lock						
AU	5405LN	626	497 ANSI	1802, 6-Pin, GA Keyed Random	110093	6
PB	5405LN	626	497 ANSI	1802, 6-Pin, GA Keyed Random	110099	6
5407LN - Entry Lock						
AU	5407LN	626	497 ANSI	1802, 6-Pin, GA Keyed Random	102405	6
PB	5407LN	626	497 ANSI	1802, 6-Pin, GA Keyed Random	110136	6
5408LN - Classroom Lock						
AU	5408LN	626	497 ANSI	1802, 6-Pin, GA Keyed Random	102421	7
PB	5408LN	626	497 ANSI	1802, 6-Pin, GA Keyed Random	110182	7



Augusta - AU



Monroe - MO



Pacific Beach - PB

4600 Series Grade 2 Cylindrical Locks 2-3/4" Backset

Design	Model #	Finish	Strike	Cylinder	FLASHship™ #	Approx. Wt. Each (Lbs)
4600LN - Dummy						
AU	4655LN	626			3641758	3
4601LN - Passage or Closet Latch						
AU	4601LN	626	497 ANSI	—	1689359	4
MO	4601LN	626	497 ANSI	—	3520671	4
PB	4601LN	626	497 ANSI		1472455	
4602LN - Privacy, Bedroom or Bath Lock						
AU	4602LN	626	497 ANSI	—	1689360	4
MO	4602LN	626	497 ANSI	—	3520672	4
PB	4602LN	626	497 ANSI		1478211	
4605LN - Storeroom or Closet Lock						
AU	4605LN	626	497 ANSI	2806, 6-Pin, Schlage C Keyed Random	2728812	5
MO	4605LN	626	497 ANSI	2806, 6-Pin, Schlage C Keyed Random	3562442	5
PB	4605LN	626	497 ANSI	2806, 6-Pin, Schlage C Keyed Random	2728813	
4607LN - Entry Lock						
AU	4607LN	626	497 ANSI	2806, 6-Pin, Schlage C Keyed Random	2066803	5
MO	4607LN	626	497 ANSI	2806, 6-Pin, Schlage C Keyed Random	3562441	5
PB	4607LN	626	497 ANSI	2806, 6-Pin, Schlage C Keyed Random	2756640	
4608LN - Classroom Lock						
AU	4608LN	626	497 ANSI	2806, 6-Pin, Schlage C Keyed Random	2066805	5
MO	4608LN	626	497 ANSI	2806, 6-Pin, Schlage C Keyed Random	3866206	5
PB	4608LN	626	497 ANSI	2806, 6-Pin, Schlage C Keyed Random	2756637	
CA	4601	630	497 ANSI	2806, 6-Pin, Schlage C Keyed Random	2378991	4

Model #	Description	Finish	FLASHship™ #	Approx. Wt. Each (Lbs)
4600LN Grade 2 Latch Bolts				
MCP238	Plain, 2-3/8" backset, 1" square front	626	3539866	0.2
MCD238	Deadlocking, 2-3/8" backset, 1" square front	626	3559029	0.2

Fax 905-738-9210, email FLASHshiporders.dss.ca@assaabloy.com or use Online Order Entry at www.assaabloydss.com/extranet by clicking the FLASHship™ icon

Note: FLASHship™ reserves the right to limit quantities.

All products in ASSA ABLOY Door Security Solutions Canada catalogues, brochures and price lists are either patented, copyrighted or registered by ASSA ABLOY Door Security Solutions Canada.

An ASSA ABLOY Group brand

ASSA ABLOY



D212 Deadbolt

D Series Grade 2 Cylindrical Deadbolts

Model #	Finish	Strike	Cylinder	FLASHship™ #	Approx. Wt. Each (Lbs)
Cylinder x Thumbturn					
D112	626	D243	1807, 6-Pin, GA Keyed Random	1349936	2
D212	626	D243	1807, 6-Pin, GA Keyed Random	3845489	2
Cylinder x Classroom					
D162	626	D243	1807, 6-Pin, GA Keyed Random	2231869	2
D262	626	D243	1807, 6-Pin, GA Keyed Random	2243976	2
Occupancy Indicator x Thumbturn					
D292	626	D243		2883701	2

Model #	Finish	Backset	Throw	FLASHship™ #	Approx. Wt. Each (Lbs)
Deadbolt Assemblies					
D38	626	2-3/8"	1"	2971431	1
2807-C	626		Schlage C cylinder	4390524	0.4



2100 Rim



2110 Surface Vertical Rod



7100 Exit Device

1800 Series Grade 1 Flat Bar Exit Devices

Model #	Description	Finish	Hand*	Strike	FLASHship™ #	Approx. Wt. Each (Lbs)
2100 - Rim						
1800-36	Rim Exit Device, 36"	689	—	757F	1670647	11
1800F-36	3 Hour Fire Rated Rim Exit Device, 36"	689	—	757F	1497038	11
1810-36	Rim Exit Device, Square bolt, 36"	689	—	757F	4216127	11
1810F-36	3 Hour Fire Rated Rim Exit Device, 36"	689	—	757F	1497039	11

*Units are field reversible

2100 Series Grade 1 Flat Bar Exit Devices

Model #	Description	Finish	Hand*	Strike	FLASHship™ #	Approx. Wt. Each (Lbs)
2100 - Rim						
2100-36	Rim Exit Device, 36"	630	—	757F	109545	11
2100-36	Rim Exit Device, 36"	689	—	757F	102415	11
2150-36	Rim Exit Device, Square bolt, 36"	630	—	757F	109587	15
2100F-36	3 Hour Fire Rated Rim Exit Device, 36"	630	—	757F	109562	11
2100F-36	3 Hour Fire Rated Rim Exit Device, 36"	689	—	757F	109564	11
2110 - Surface Vertical Rod						
2110-36	SVR Exit Device, 36"	689	RHR	791 Top, 790 Bottom	109573	15
2110F-36	3 Hour Fire Rated SVR Exit Device, 36"	689	RHR	791 Top, 790 Bottom	109578	15
2110-36	SVR Exit Device, 36"	630	RHR	791 Top, 790 Bottom	769975	15

*Units are field reversible

Fax 905-738-9210, email FLASHshiporders.dss.ca@assaabloy.com or use Online Order Entry at www.assaabloydss.com/extranet by clicking the FLASHship™ icon

Note: FLASHship™ reserves the right to limit quantities.

All products in ASSA ABLOY Door Security Solutions Canada catalogues, brochures and price lists are either patented, copyrighted or registered by ASSA ABLOY Door Security Solutions Canada.

An ASSA ABLOY Group brand

ASSA ABLOY



2100 Rim



2110 Surface Vertical Rod



6100 Exit Device

6000 Series Grade 1 Wide Stile Architectural Exit Devices

Model #	Description	Finish	Hand*	Strike	FLASHship™ #	Approx. Wt. Each (Lbs)
7100 - Rim						
6100-36	Rim Exit Device, 36"	630	RR	757F	4331025	14
6100F-36	3 Hour Fire Rated Rim Exit Device, 36"	630	RR	757F	4331027	14
6150F-36	3 Hour Fire Rated Square Bolt Rim Exit Device, 36",	630	RR	757F	4351986	15
6170-36	SVR Exit Device, 36"	630	RR	791 Top, 790 Bottom	4351988	15
6170F-36	3 Hour Fire Rated SVR Exit Device, 36"	630	RR	791 Top, 790 Bottom	4351990	15

*Units are field reversible

7100 Series Grade 1 Wide Stile Architectural Exit Devices

Model #	Description	Finish	Hand*	Strike	FLASHship™ #	Approx. Wt. Each (Lbs)
7100 - Rim						
7100-36	Rim Exit Device, 36"	630	—	757F	110468	14
7100F-36	3 Hour Fire Rated Rim Exit Device, 36"	630	—	757F	110486	14
7150F-36	3 Hour Fire Rated Square Bolt Rim Exit Device, 36",	630	—	757F	110574	15
7110 - Surface Vertical Rod						
7110-36	SVR Exit Device, 36"	630	RHR	791 Top, 790 Bottom	102425	15
7110F-36	3 Hour Fire Rated SVR Exit Device, 36"	630	RHR	791 Top, 790 Bottom	110522	15

*Units are field reversible



217F Plate Trim



426F Escutcheon Trim

210F Series: Plate Trim

Model #	Finish	Cylinder	FLASHship™ #	Approx. Wt. Each (Lbs)
Dummy Trim Pull Plate				
214F	689	—	2636737	1
Nightlatch Cylinder x Pull				
217F	689	Less Cylinder	109615	1

Note: See page 16 for cylinder options

Exit Device Trim

Design	Model #	Finish	Cylinder	FLASHship™ #	Approx. Wt. Each (Lbs)
Nightlatch					
AU	441F	626	1802, 6-Pin, GA Keyed Random	3556300	2.5
PB	441F	626	1802, 6-Pin, GA Keyed Random	3164424	2.5
Classroom					
AU	446F	626	1802, 6-Pin, GA Keyed Random	3492133	2.5
PB	446F	626	1802, 6-Pin, GA Keyed Random	2601850	2.5
Passage/Dummy					
AU	588F	630	—	3909870	2.5
PB	588F	689	—	2687278	2.5
AU	448F	689	—	3560991	2.5
PB	448F	689	—	3649344	2.5

Fax 905-738-9210, email FLASHshiporders.dss.ca@assaabloy.com or use Online Order Entry at www.assaabloydss.com/extranet by clicking the FLASHship™ icon

Note: FLASHship™ reserves the right to limit quantities.

All products in ASSA ABLOY Door Security Solutions Canada catalogues, brochures and price lists are either patented, copyrighted or registered by ASSA ABLOY Door Security Solutions Canada.

An ASSA ABLOY Group brand

ASSA ABLOY



217F Plate Trim



426F Escutcheon Trim

Exit Device Trim and Mullions

Design	Model #	Finish	Hand*	Cylinder	FLASHship™ #	Approx. Wt. Each (Lbs)
Classroom/Storeroom						
AU	426F	630	RHR	GA Keyed Random	3909869	2.7
PB	426F	630	RHR	GA Keyed Random	2157849	2.7
AU	426F	630	LHR	GA Keyed Random	4845059	2.7
PB	426F	630	LHR	GA Keyed Random	4868240	2.7
Passage/Dummy						
AU	428F	630	RHR	—	3909870	2.7
PB	428F	630	RHR	—	3909871	2.7
AU	428F	630	LHR	—	4868238	2.7
PB	428F	630	LHR	—	4868239	2.7

Note: See page 16 for cylinder options
 *Units are field reversible

Design	Model #	Finish	Hand*	FLASHship™ #	Approx. Wt. Each (Lbs)
Classroom/Storeroom					
AU	626F	630	RHR	118901	5
PB	626F	630	RHR	102423	5
AU	626F	630	LHR	118679	5
PB	626F	630	LHR	110334	5
Passage/Dummy					
AU	628F	630	RHR	110354	5
PB	628F	630	RHR	110353	5
AU	628F	630	LHR	110352	5
PB	628F	630	LHR	110351	5



M200 Series Removable Mullions for 8 ft openings

Model #	Description	FLASHship™ #	Approx. Wt. Each (Lbs)
For 8 Ft. Openings			
M200-8	Complete for Panic Exits	306776	37
M200F-8	Complete for Fire Exits	633585	37

Design	Finish	Cylinder	FLASHship™ #	Approx. Wt. Each (Lbs)
Nightlatch				
632F	630	GA Keyed Random	110376	5
632F	630	Less Cylinder	110377	5
Classroom				
633F	630	GA Keyed Random	110386	5
633F	630	Less Cylinder	110388	5
Dummy				
634F	630		110397	
Passage				
635F	630		102424	

Fax 905-738-9210, email FLASHshiporders.dss.ca@assaabloy.com or use Online Order Entry at www.assaabloydss.com/extranet by clicking the FLASHship™ icon

Note: FLASHship™ reserves the right to limit quantities.

All products in ASSA ABLOY Door Security Solutions Canada catalogues, brochures and price lists are either patented, copyrighted or registered by ASSA ABLOY Door Security Solutions Canada.

An ASSA ABLOY Group brand

ASSA ABLOY

Exit Device Cylinders and Miscellaneous

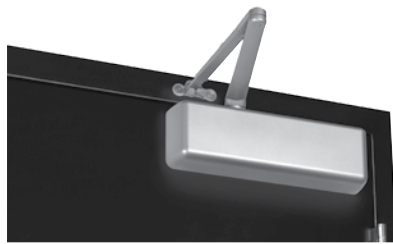
Model #	Description	Key Section	Finish	Collar Size Included	FLASHship™ #	Approx. Wt. Each (Lbs)
Rim Cylinders						
1109	6-Pin, Keyed Random	GA	626	1765.25	109443	0.4
2109	6-Pin, Keyed Random	C	626		2342347	0.4

Miscellaneous Hardware for Exit Devices

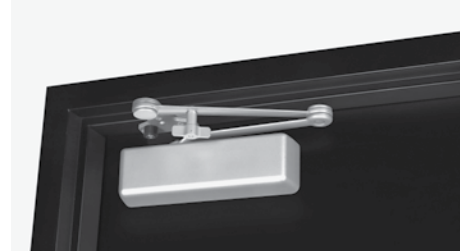
Model #	Description	Finish	FLASHship™ #	Approx. Wt. Each (Lbs)
Extension Rods - For All Exit Device Series				
2010-12	12" (305mm) Length	630	155594	1
Strikes				
793	Optional for double door applications	—	110669	1
Miscellaneous				
1109BPK	Backplate kit for 1109 rim cylinders	626	2589862	0.5
7000	Long spindle (tailpiece) kit for all 620F and 630F series trim, 2" to 2-1/2" thick door		110452	0.1
60-7000-0815	Schlage Cam and housing assembly		259055	0.5

Stand-Alone Door Alarm

Model #	Description	Finish	FLASHship™ #	Approx. Wt. Each (Lbs)
SDA16	Battery-operated door alarm	—	3520670	3



5801 Non-Hold Open



5821T Hold Open

5800 Series Door Closers - Cast Iron

Model #	Description	Finish	FLASHship™ #	Approx. Wt. Each (Lbs)
Non-Hold Open With Sleeve Nuts				
5801 x SN	Multi-Size 1-6	689	3559802	12
Non-Hold Open, With Sleeve Nuts				
5821 x SN	Stop Only, Multi-Size 1-6	689	3508821	14
Hold Open With Sleeve Nuts				
5811 x SN	Multi-Size 1-6	689	3909970	12
Hold Open, With Sleeve Nuts				
5821T x SN	Holder/Stop Thumbturn, Multi-Size 1-6	689	3909973	14
Accessories				
SN-134	Sleeve Nut Pkg., 1-3/4" Door	689	108376	0.2
5800RDP	Narrow Frame Drop Plate, regular arm	689	3909968	4
5800NDP	Narrow Top Rail Drop Plate, parallel arm	689	3909969	4

Notes:

- Closers tri-packed
- Case quantity = 4
- SN-134 = 4 per pack; supplied standard with all 5800 door closers
- FLASHship™ reserves the right to limit quantities
- For heavy-duty parallel rigid arm applications, specify 5821 or 5821T, stop is removable

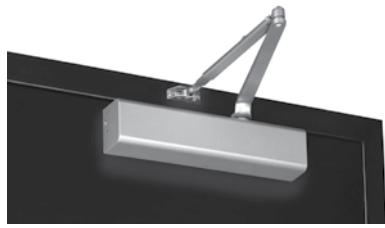
Fax 905-738-9210, email FLASHshiporders.dss.ca@assaabloy.com or use Online Order Entry at www.assaabloydss.com/extranet by clicking the FLASHship™ icon

Note: FLASHship™ reserves the right to limit quantities.

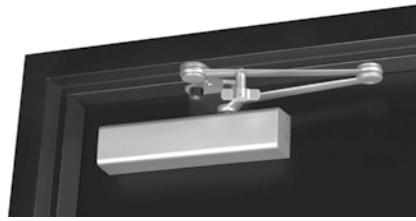
All products in ASSA ABLOY Door Security Solutions Canada catalogues, brochures and price lists are either patented, copyrighted or registered by ASSA ABLOY Door Security Solutions Canada.

An ASSA ABLOY Group brand

ASSA ABLOY



2701 Non-Hold Open



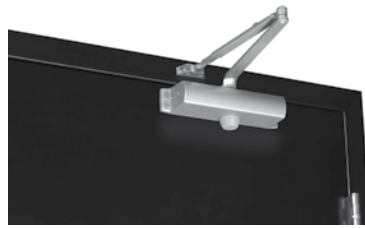
2721T Hold Open

2700 Series Door Closers: Architectural

Model #	Description	Finish	FLASHship™ #	Approx. Wt. Each (Lbs)
Non-Hold Open, With Sleeve Nuts				
2701	Multi-Size 1-6	689	2946800	6.5
Non-Hold Open, With Sleeve Nuts				
2721 x SN	Stop Only, Multi-Size 1-6	689	3222308	7.75
Hold Open, With Sleeve Nuts				
2711	Multi-Size 1-6	689	3909972	6.5
Hold Open, With Sleeve Nuts				
2721T x SN	Holder/Stop Thumbturn, Multi-Size 1-6	689	3233576	7.75
Accessories				
SN-134	Sleeve Nut Pkg., 1-3/4" Door	689	102358	0.2
3158	Exposed-Back/Narrow Top Rail Drop Plate	689	3233575	2

Notes:

- Closers tri-packed
- Case quantity:
2701 = 6
2711, 2721, 2721T = 4
- SN-134 = 4 per pack; supplied standard with all 2700 door closers
- FLASHship™ reserves the right to limit quantities
- For heavy-duty parallel rigid arm applications, specify 2721 or 2721T, stop is removable



1101BF Non-Hold Open

1100 Series Door Closers: Industrial

Model #	Description	Finish	FLASHship™ #	Approx. Wt. Each (Lbs)
Non-Hold Open With Sleeve Nuts				
1101BF	Multi-Size 1-4	689	3834504	6
Hold Open With Sleeve Nuts				
1111BF	Multi-Size 1-4	689	3909971	8
Accessories				
SN-134	Sleeve Nut Pkg., 1-3/4" Door	689	102358	0.2

Notes:

- Closers tri-packed
- Case quantity:
1101BF = 6
1111BF = 4
- SN-134 = 4 per pack; supplied standard with all 1100 door closers
- FLASHship™ reserves the right to limit quantities.

Fax 905-738-9210, email FLASHshiporders.dss.ca@assaabloy.com or use Online Order Entry at www.assaabloydss.com/extranet by clicking the FLASHship™ icon

Note: FLASHship™ reserves the right to limit quantities.

All products in ASSA ABLOY Door Security Solutions Canada catalogues, brochures and price lists are either patented, copyrighted or registered by ASSA ABLOY Door Security Solutions Canada.

An ASSA ABLOY Group brand

ASSA ABLOY

ARCHITECTURAL DOOR ACCESSORIES



ASSA ABLOY

The global leader in
door opening solutions

Fax 905-738-9210, email FLASHship.dss.ca@assaabloy.com or use
Online Order Entry at www.assaabloydss.com/extranet by clicking the FLASHship™ icon
Note: FLASHship™ reserves the right to limit quantities.

All products in ASSA ABLOY Door Security Solutions Canada catalogues, brochures and price lists
are either patented, copyrighted or registered by ASSA ABLOY Door Security Solutions Canada.



1502 Spring Hinge



TA2714 Five Knuckle Hinge

Model #	Size (in.)	Options	Finish	FLASHship™ #	Approx. Wt. Each (Lbs)
Spring Hinges - Standard Weight					
1502	4-1/2" x 4-1/2"	-	US26D	64531	1
3 Knuckle Hinges - Standard Weight					
TA314	4-1/2" x 4"	-	US26D	143639	1
TA314	4-1/2" x 4"	NRP	US26D	143290	1
TA314	4-1/2" x 4"	-	US32D	143637	1
TA314	4-1/2" x 4"	NRP	US32D	143301	1
TA714	4-1/2" x 4"	-	US26D	143636	1
TA714	4-1/2" x 4"	NRP	US26D	143279	1
3 Knuckle Hinges - Heavy Weight					
TA386	4-1/2" x 4"	NRP	US26D	64211	2
TA386	4-1/2" x 4"	NRP	US32D	143308	2
TA786	4-1/2" x 4"	-	US26D	143541	2
TA786	4-1/2" x 4"	NRP	US26D	194633	2
5 Knuckle Hinges - Standard Weight					
TA2314	4-1/2" x 4"	-	US26D	64091	1
TA2314	4-1/2" x 4"	NRP	US26D	64104	1
TA2314	4-1/2" x 4"	-	US32D	64100	1
TA2314	4-1/2" x 4"	NRP	US32D	64105	1
TA2714	4-1/2" x 4"	-	US26D	64346	1
TA2714	4-1/2" x 4"	NRP	US26D	64389	1
TA2714	5" x 4"	-	US26D	64316	1
5 Knuckle Hinges - Heavy Weight					
T4A3786	4-1/2" x 4"	-	US26D	64243	1.5
T4A3786	4-1/2" x 4"	NRP	US26D	63957	1.5
T4A3786	5" x 4-1/2"	-	US26D	63945	2
T4A3386	4-1/2" x 4"	-	US26D	63826	1.5
T4A3386	4-1/2" x 4"	NRP	US26D	63935	1.5
T4A3386	4-1/2" x 4"	-	US32D	63948	1.5
T4A3386	4-1/2" x 4"	NRP	US32D	63941	1.5

NRP=Non Removable Pin

Fax 905-738-9210, email FLASHshiporders.dss.ca@assaabloy.com or use Online Order Entry at www.assaabloydss.com/extranet by clicking the FLASHship™ icon
 Note: FLASHship™ reserves the right to limit quantities.

All products in ASSA ABLOY Door Security Solutions Canada catalogues, brochures and price lists are either patented, copyrighted or registered by ASSA ABLOY Door Security Solutions Canada.

ASSA ABLOY

The global leader in door opening solutions

ARCHITECTURAL DOOR ACCESSORIES



MacPro® MP79 Hinge



ElectroLynx® Hinge

Model #	Size (in.)	Options	Finish	FLASHship™ #	Approx. Wt. Each (Lbs)
MacPro® Hinges					
MPB79	4-1/2" x 4"	-	US26D	63789	1
MPB79	4-1/2" x 4"	NRP	US26D	63790	1
ElectroLynx® Hinges					
TA714	4-1/2" x 4"	QC12	US26D	612063	1
TA2714	4-1/2" x 4"	QC12	US26D	94520	1
T4A3386	4-1/2" x 4"	QC12	US32D	990311	1.5
T4A3786	4-1/2" x 4"	QC12	US26D	656819	1.5
ElectroLynx® Cables					
QC-C006	6"	12 Wire 22AWG	-	848610	0.1
QC-C012	12"	12 Wire 22AWG	-	842821	0.1
QC-C200P	26"	12 Wire 22AWG	-	841783	0.1
QC-C300	38"	12 Wire 22AWG	-	880662	0.1
QC-C300P	38"	12 Wire 22AWG	-	841785	0.1
QC-C1500	15'2"	12 Wire 22AWG	-	880657	0.7
QC-C1500P	15'2'	12 Wire 22AWG	-	841788	0.7

ASSA ABLOY

The global leader in door opening solutions

Fax 905-738-9210, email FLASHshiporders.dss.ca@assaabloy.com or use Online Order Entry at www.assaabloydss.com/extranet by clicking the FLASHship™ icon

Note: FLASHship™ reserves the right to limit quantities.

All products in ASSA ABLOY Door Security Solutions Canada catalogues, brochures and price lists are either patented, copyrighted or registered by ASSA ABLOY Door Security Solutions Canada.

ARCHITECTURAL DOOR ACCESSORIES



Fax 905-738-9210, email FLASHship.dss.ca@assaabloy.com or use
Online Order Entry at www.assaabloydss.com/extranet by clicking the FLASHship™ icon
Note: FLASHship™ reserves the right to limit quantities.

All products in ASSA ABLOY Door Security Solutions Canada catalogues, brochures and price lists
are either patented, copyrighted or registered by ASSA ABLOY Door Security Solutions Canada.

Fax FLASHship orders to 905-738-9210 or email to FLASHshiporders.dss.ca@assaabloy.com

ASSA ABLOY

The global leader in
door opening solutions

ARCHITECTURAL DOOR ACCESSORIES



441H Dome Stop



594 Roller Latch



622 Door Viewer

Model #	Description	Finish	FLASHship™ #	Approx. Wt. Each (Lbs)
Door Stops				
406	Wall; Wrought Convex	US26D	2656509	0.2
441CU	Dome Stop with Riser	US26D	2656521	0.3
441H	Cast Universal Dome Stop	US26D	2656522	0.2
446	Round Stop	US26D	2656527	0.4
528	Hinge Pin Stop	NP	2656559	0.2
Dust Proof Strike				
570	Strike	US26D	2656566	0.4
Roller Latches				
594	with #161 Strike	US26D	2656572	0.6
Door Knockers/Viewers				
622	190° Viewer	CRM	2656588	0.1
622	190° Viewer	STNN	2656590	0.1
1700	Coordinator		2656491	

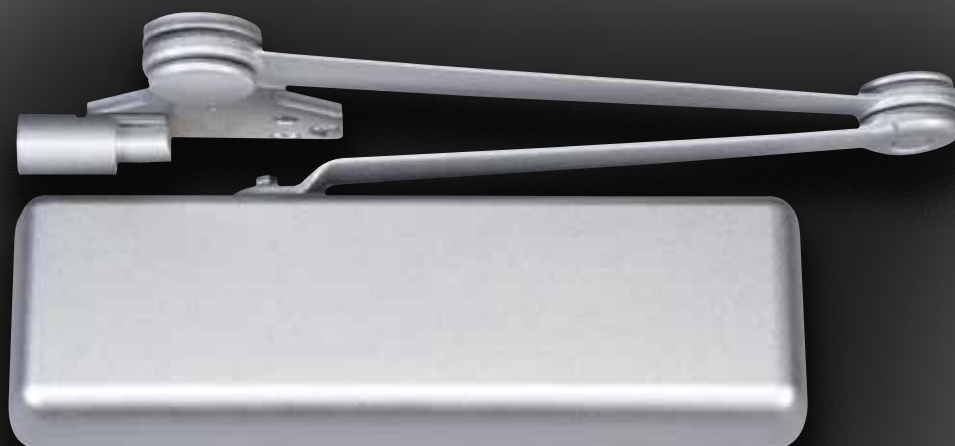
ASSA ABLOY

The global leader in
door opening solutions

Fax 905-738-9210, email FLASHshiporders.dss.ca@assaabloy.com or use
Online Order Entry at www.assaabloydss.com/extranet by clicking the FLASHship™ icon

Note: FLASHship™ reserves the right to limit quantities.

All products in ASSA ABLOY Door Security Solutions Canada catalogues, brochures and price lists
are either patented, copyrighted or registered by ASSA ABLOY Door Security Solutions Canada.



Fax 905-738-9210, email FLASHship.dss.ca@assaabloy.com or use
Online Order Entry at www.assaabloydss.com/extranet by clicking the FLASHship™ icon
Note: FLASHship™ reserves the right to limit quantities.

All products in ASSA ABLOY Door Security Solutions Canada catalogues, brochures and price lists
are either patented, copyrighted or registered by ASSA ABLOY Door Security Solutions Canada.

ASSA ABLOY

The global leader in
door opening solutions

Norton®



161



210



410

Model #	Description	Finish	FLASHship™ #	Approx. Wt. Each (Lbs)
Category				
161BFXTPN	Description	689	3233141	8
210XTPN	Description	689	3251292	8
410XTPN	Description	689	4498660	8

ASSA ABLOY

The global leader in door opening solutions

Fax 905-738-9210, email FLASHshiporders.dss.ca@assaabloy.com or use Online Order Entry at www.assaabloydss.com/extranet by clicking the FLASHship™ icon

Note: FLASHship™ reserves the right to limit quantities.

All products in ASSA ABLOY Door Security Solutions Canada catalogues, brochures and price lists are either patented, copyrighted or registered by ASSA ABLOY Door Security Solutions Canada.

RIXSON®



Fax 905-738-9210, email FLASHship.dss.ca@assaabloy.com or use
Online Order Entry at www.assaabloydss.com/extranet by clicking the FLASHship™ icon
Note: FLASHship™ reserves the right to limit quantities.

All products in ASSA ABLOY Door Security Solutions Canada catalogues, brochures and price lists
are either patented, copyrighted or registered by ASSA ABLOY Door Security Solutions Canada.

ASSA ABLOY

The global leader in
door opening solutions

Fax FLASHship orders to 905-738-9210 or email to FLASHshiporders.dss.ca@assaabloy.com

RIXSON®



147 Offset Pivot



370 Center Hung Pivot



M19 Intermediate Pivot

Model #	Description	Hand	Finish	FLASHship™ #	Approx. Wt. Each (Lbs)
3/4" Offset Pivot Sets (Includes Top Pivot)					
147	Regular (500#) Interior/Exterior	RH	626	117727	2
147	Regular (500#) Interior/Exterior	LH	626	117728	2
L147	Heavy Weight (700#) Lead 1-3/4" Door	RH	626	139236	5
L147	Heavy Weight (700#) Lead 1-3/4" Door	LH	626	124838	5
Center Hung Pivot Sets (Includes Top Pivot)					
128-3/4	250#	-	626	108790	2
370	400#	-	626	133008	3
Intermediate Pivots					
M19	Regular	RH	626	117730	2
M19	Regular	LH	626	124672	2
M190	Heavy Duty	RH	626	117492	3
M190	Heavy Duty	LH	626	117491	3

ASSA ABLOY

The global leader in door opening solutions

Fax 905-738-9210, email FLASHshiporders.dss.ca@assaabloy.com or use Online Order Entry at www.assaabloydss.com/extranet by clicking the FLASHship™ icon

Note: FLASHship™ reserves the right to limit quantities.

All products in ASSA ABLOY Door Security Solutions Canada catalogues, brochures and price lists are either patented, copyrighted or registered by ASSA ABLOY Door Security Solutions Canada.



Checkmate® Stops & Holders



994 Electromagnetic Holder/Release

Model #	Description	Finish	FLASHship™ #	Approx. Wt. Each (Lbs)
Checkmate® Stops and Holders				
Concealed				
1-326	Heavy Duty Holder, Size 3	630	102391	5
1-336	Heavy Duty Stop, Size 3	630	109274	5
1-336	Heavy Duty Stop, Size 3	652	109282	5
6-336	Low Profile Stop, Size 3	630	206555	5
6ADJ-336	Low Profile Adjustable Stop, Size 3	630	109165	5
Surface				
9-326	Heavy Duty Holder, Size 3	630	102396	4
9-326	Heavy Duty Holder, Size 3	652	109123	4
9-336	Heavy Duty Stop, Size 3	630	102397	4
9-336	Heavy Duty Stop, Size 3	652	109122	4
10-336	Low Profile Stop, Size 3	630	109054	4
10-336	Low Profile Stop, Size 3	652	109070	4
10-346	Standard Duty Adjustable Combo, Size 3	630	108922	2
Electromagnetic Door Holder/Releases				
Triple Voltage Door Holders (12VDC, 24VAC/DC and 120VAC)				
996	Surface Wired	689	102388	2
994	Adjustable Short Armature Concealed Wiring	689	1479077	2
998	Wall Mounted	689	102400	3
Armature Extensions				
900	Base Unit	689	108919	0.1
900-50	1/2" Armature Extension Filler*	689	108917	0.1
900-75	3/4" Armature Extension Filler*	689	1659683	0.1
900-100	1" Armature Extension Filler*	689	108918	0.1

*Extension spacers and bend must be used with 900 base unit armature extension

Fax 905-738-9210, email FLASHshiporders.dss.ca@assaabloy.com or use Online Order Entry at www.assaabloydss.com/extranet by clicking the FLASHship™ icon

Note: FLASHship™ reserves the right to limit quantities.

All products in ASSA ABLOY Door Security Solutions Canada catalogues, brochures and price lists are either patented, copyrighted or registered by ASSA ABLOY Door Security Solutions Canada.

ASSA ABLOY

The global leader in door opening solutions

Proven quality...

when it matters most.



HES 9600 Series,
The Only Windstorm
Rated, Surface Mounted
Electric Strike Available



www.hesinnovations.com
800.626.7590



ASSA ABLOY, the global leader
in door opening solutions

When it comes to protecting what you value, nothing compares to the reliability, strength and durability of the HES 9600 electric strike. This surface mounted solution for rim exit devices has been put to the test.

Independently verified by a nationally recognized testing laboratory as:

- ANSI 250.13 severe windstorm rated
- ANSI/BHMA A156.31 Grade 1
- UL 1034 burglary-resistant listed and suitable for outdoor use
- UL 294 (6th edition) listed
- Static strength to 2,000 lbs.
- Dynamic strength to 120 ft-lbs.
- Endurance 1,000,000 cycles



1006CLB,

5200C

4500C

8000C

Model #	Description	Finish	FLASHship™ #
1006CS	Most complete, versatile and comprehensive all-in-one electric strike, designed to accommodate every lock within ANSI 4-7/8" strike plate, Heavy Duty (Grade 1), Fire Rated (UL-10C, CAN4-S104, ULC-S104, NFP-252), Field selectable fail safe/fail secure, dual voltage, Cylindrical/Mortise/Exit Device applications. Faceplates J, KD, KM, AD, HM and brackets included.	630	3177893
1006CLB	Most complete, versatile and comprehensive all-in-one electric strike, designed to accommodate every lock within ANSI 4-7/8" strike plate, Heavy Duty (Grade 1), Fire Rated (UL-10C, CAN4-S104, ULC-S104, NFP-252), Field selectable fail safe/fail secure, dual voltage, Cylindrical/Mortise/Exit Device applications. Faceplates J, KD and KM included.	630	3221382
1006CDB	Most complete, versatile and comprehensive all-in-one electric strike, designed to accommodate every lock within ANSI 4-7/8" strike plate, Heavy Duty (Grade 1), Fire Rated (UL-10C, CAN4-S104, ULC-S104, NFP-252), Field selectable fail safe/fail secure, dual voltage, Cylindrical/Mortise/Exit Device applications. Faceplates HM, AD and deadbolt brackets included.	630	3273614
4500C	Low Profile for installation in 2" UL 10C fire rated frames with 1/2" drywall penetration, Heavy Duty (Grade 1), Fire Rated (UL-10C, CAN4-S104, ULC-S104, NFP-252), Field selectable fail safe/fail secure, dual voltage, Cylindrical/Mortise applications.	630	69047
4500C-LBM	Low Profile for installation in 2" UL 10C fire rated frames with 1/2" drywall penetration, Heavy Duty (Grade 1), Fire Rated (UL-10C, CAN4-S104, ULC-S104, NFP-252), Field selectable fail safe/fail secure, dual voltage, Cylindrical/Mortise applications, Latch Bolt Monitor included. Faceplates for both cylindrical and mortise locks included.	630	3496117
5000C	Flexible low Profile (1-1/16" body depth), Heavy Duty (Grade 1), outdoor rated, field selectable fail safe/fail secure, dual voltage, Cylindrical applications up to 5/8" throw. Faceplates 501 and 501A included.	630	3221384
5200C	Flexible standard profile with vertical and horizontal adjustment for ease of installation, Heavy Duty (Grade 1), field selectable fail safe/fail secure, dual voltage, Cylindrical applications up to 3/4" throw. Faceplates 501 and 501A included.	630	3221386
8000C	No-cut concealed, Heavy Duty (Grade 1), Outdoor rated, field selectable fail safe/fail secure, dual voltage, horizontal adjustment, cylindrical applications up to 5/8" throw. Faceplates 801 and 801A included.	630	713525
8300C	No-cut concealed, Heavy Duty (Grade 1), Fire Rated (UL-10C, CAN4-S104, ULC-S104, NFP-252), outdoor rated, field selectable fail safe/fail secure, dual voltage, horizontal adjustment, cylindrical applications up to 5/8" throw. Faceplates 801 and 801A included.	630	3251291
1006	Most complete, versatile and comprehensive all-in-one electric strike, designed to accommodate every lock within ANSI 4-7/8" strike plate, Heavy Duty (Grade 1), Fire Rated (UL-10C, CAN4-S104, ULC-S104, NFP-252), Field selectable fail secure, dual voltage, Cylindrical/Mortise/Exit Device applications. Need to order faceplates separately.		69114
1006F	Most complete, versatile and comprehensive all-in-one electric strike, designed to accommodate every lock within ANSI 4-7/8" strike plate, Heavy Duty (Grade 1), Fire Rated (UL-10C, CAN4-S104, ULC-S104, NFP-252), Field selectable fail safe, dual voltage, Cylindrical/Mortise/Exit Device applications. Need to order faceplates separately.		69038
1006LBM	Most complete, versatile and comprehensive all-in-one electric strike, designed to accommodate every lock within ANSI 4-7/8" strike plate, Heavy Duty (Grade 1), Fire Rated (UL-10C, CAN4-S104, ULC-S104, NFP-252), Field selectable fail safe/fail secure, dual voltage, Cylindrical/Mortise/Exit Device applications. Latch Bolt Strike Monitor included. Need to order faceplates separately.		69162
1006LBSM	Most complete, versatile and comprehensive all-in-one electric strike, designed to accommodate every lock within ANSI 4-7/8" strike plate, Heavy Duty (Grade 1), Fire Rated (UL-10C, CAN4-S104, ULC-S104, NFP-252), Field selectable fail safe/fail secure, dual voltage, Cylindrical/Mortise/Exit Device applications. Faceplates J, KD and KM included.		69164

Fax 905-738-9210, email FLASHshiporders.dss.ca@assaabloy.com or use Online Order Entry at www.assaabloydss.com/extranet by clicking the FLASHship™ icon

Note: FLASHship™ reserves the right to limit quantities.

All products in ASSA ABLOY Door Security Solutions Canada catalogues, brochures and price lists are either patented, copyrighted or registered by ASSA ABLOY Door Security Solutions Canada.

ASSA ABLOY

The global leader in door opening solutions



8500



9400



9600



2005M3

Model #	Description	Finish	FLASHship™ #
J Option	Most complete, versatile and comprehensive all-in-one electric strike, designed to accommodate every lock within ANSI 4-7/8" strike plate, Heavy Duty (Grade 1), Fire Rated (UL-10C, CAN4-S104, ULC-S104, NFP-252), Field selectable fail safe/fail secure, dual voltage, Cylindrical/Mortise/Exit Device applications. Faceplates HM, AD and deadbolt brackets included.	630	69140
KD Option	For use with mortise locksets up to 3/4" throw latchbolt. Compatible locksets: Dorma 9500, Jackson, Sargent (7700, 8100), Schlage, Yale 8700.	630	69118
KM Option (Replaces the Legacy K Option)	For use with mortise locksets up to 3/4" throw latchbolt. Compatible locksets: Accurate, Arrow, Baldwin, Best, Corbin Russwin, Falcon, Marks, PDQ, SARGENT (7800, 8200, 9200), Yale 8800.	630	69122
502 Option	For use with cylindrical locksets or spring latches in aluminum frames. Includes universal mounting tabs. 6-7/8" x 1-1/4".	630	69082
503 Option	For use with cylindrical locksets or spring latches in aluminum frames. Includes universal mounting tabs. 6-7/8" x 1-1/4".	630	69069
8500	No-cut concealed, Heavy Duty (Grade 1), Fire Rated (UL-10C, CAN4-S104, ULC-S104, NFP-252), outdoor rated, field selectable fail safe/fail secure, dual voltage, horizontal adjustment, for mortise applications. Need to order faceplates separately.	N/A	1752730
851M Option	Compatible with SARGENT 8100, 8200, 9200 Mortise Locksets.	630	1752729
9400	Rim strike, Heavy duty (grade 1) field selectable (12/24 volt) & (Fail safe/fail secure) outdoor rated, surface mounted. Accommodates up to 1/2 latchbolt and includes 1/8 spacer plate.	630	1020374
9500	Rim strike, Heavy duty (grade 1), Fire rated (UL-10C, CAN4-S104, ULC-S104, NFP-252), surface mounted. Accommodates rim exit devices with a 3/4 latchbolt.	630	69043
9600	Rim strike, Heavy duty (grade 1) field selectable (12/24 volt) & (Fail safe/fail secure) outdoor rated, surface mounted. Accommodates rim exit devices with a 3/4 latchbolt.	630	69110
152	Universal Mounting Tabs for aluminum and metal jambs.		69070
2004M	ElectroLynx adapter used to connect HES electric strike and ElectroLynx connectors.		1074155
2005M3	Smart Pac III, In-line power controller, 12V to 32V AC/DC, reduces voltage by 25% to extend life of strike.		1731338

ASSA ABLOY

The global leader in door opening solutions

Fax 905-738-9210, email FLASHshiporders.dss.ca@assaabloy.com or use Online Order Entry at www.assaabloydss.com/extranet by clicking the FLASHship™ icon

Note: FLASHship™ reserves the right to limit quantities.

All products in ASSA ABLOY Door Security Solutions Canada catalogues, brochures and price lists are either patented, copyrighted or registered by ASSA ABLOY Door Security Solutions Canada.

EXTREME LOCKS FOR EXTREME CONDITIONS



1.800.MAGLOCK | securitron.com

SECURITRON[®]
ASSA ABLOY

Looking for a Lock to Weather the Storm?

Securitron's M32 and M62 Magnalocks[®] are designed to withstand all that Mother Nature can dish out. With the flexibility to be used on any interior, perimeter or exterior door, including fences and gates, any application is fair game. Vandal resistant with up to 1800 lbs holding force, Magnalocks release instantly without any residual magnetism. With reliable operation, rain or shine, these locks are the choice of industry professionals.

ASSA ABLOY, the global leader
in door opening solutions

 **MAGNACARE**[®]
LIFETIME NO FAULT WARRANTY



M62



BPS-12/24-1



EL-CEPT

Model #	Description	Finish	FLASHship™ #	Approx. Wt. Each (Lbs)
Electromagnetic Locks and Accessories				
MCL-24	Magnetic Cabinet Lock, 24 Volts		64711	1.5
M32	Magnalock 32 - 12/24Vdc		1649308	6
M62	Magnalock 62 - 12/24Vdc		64685	11
M62B	Magnalock 62 - 12/24Vdc, Mbs		76445	11
M62BD	Magnalock 62 - 12/24Vdc, Mbs-Dps		140253	11
Power Supplies and Accessories				
BPS-12/24-1	Dual Voltage Power Supply 12/24Vdc - 1Amp	626	95395	9
BPS-12-1	Power Supply 12Vdc - 1Amp	626	64650	9
BPS-24-1	Power Supply 24Vdc - 1Amp		64645	9
BPS-24-2	Power Supply 24Vdc - 2Amp		64646	15
BPS-24-3	Power Supply 24Vdc - 3Amp		64647	18
BPS-24-4	Power Supply 24Vdc - 4Amp		64649	24
BPS-24-6	Power Supply 24Vdc - 6Amp		64652	28
BPS-24-10	Power Supply 24Vdc - 10Amp		64751	33
B-24-5	Battery-24Vdc-5Amp		64870	4
CFAR-24	Fire Alert Reset Control 24Vdc (Canada)		64632	3
PDB-8F8R	Power Distribution 8 Fused Output W/ Relays & Fire Trigger		2346677	1
RB-4-24	Relay Board -24Vdc		64707	0.5
Power Transfers				
EL-CEPT	Electrical Power Transfer (Concealed - ElectroLynx®)	US32D	1064201	2.4
EL-EPT	Electrical Power Transfer ElectroLynx® Standard Version		82524	0.75
EL-EPTL	Electrical Power Transfer ElectroLynx® Long Version		139887	1.2
EPT	Electrical Power Transfer Standard Version		64788	0.75
CEPT-10	Electrical Power Transfer (Concealed - 10 Wire)	US32D	979441	2.4
Timers				
BA-XDT-12	Exit Delay Timer - 12Vdc		64700	5
BA-XDT-24	Exit Delay Timer - 24Vdc		64710	5
XDT-24	Exit Delay Timer - 24Vdc		64756	5
TM-9	Time Mate		64721	5

ASSA ABLOY

The global leader in door opening solutions

Fax 905-738-9210, email FLASHshiporders.dss.ca@assaabloy.com or use Online Order Entry at www.assaabloydss.com/extranet by clicking the FLASHship™ icon

Note: FLASHship™ reserves the right to limit quantities.

All products in ASSA ABLOY Door Security Solutions Canada catalogues, brochures and price lists are either patented, copyrighted or registered by ASSA ABLOY Door Security Solutions Canada.



PB2



GL1



DK-26SS

Model #	Description	Finish	FLASHship™ #	Approx. Wt. Each (Lbs)
Keyswitches and Accessories				
MK	Mortise Keyswitch, Momentary - Single Gang		64859	2
MKA	Mortise Keyswitch, Alternate - Single Gang		64665	2
MKA2	Mortise Keyswitch - Dpdt, Alternate - Single Gang		64659	2
MKS	Mortise Keyswitch, Momentary Switch Only		64678	2
CKL	Cabinet Key Lock		95150	0.5
Push Buttons and Switches				
EEB2	Emergency Exit Button W/ 30Sec Timer - Sf Grn/Red/Handicap		64753	2
PB2	Push Button, Momentary - Single Gang, Grn/Red/Handicap		64775	2
PB2E	Push Button, Momentary - Single Gang, Grn/Red/Handicap		64782	2
PB3	Push Button, Momentary - Single Gang, Green/Red Lens		64778	2
PB3E	Push Button, Momentary - Single Gang, Grn/Red Lens		64794	2
PB3ER	Push Button - Remote, Momentary - Momentary - Surface Mount, Grn/Red Lens		64692	2
TSB-C	Tsb - Door Cord W/ Caps	GRAY/BLK	64717	7
XMS	Exit Motion Sensor		64836	0.5
Gate Locks and Accessories				
GL1	Gate Lock		64884	6
FMK-SW	Flex Mount Kit For Swinging Gate		232448	7
Access Control and Accessories				
DK-12	Digital Keypad System W/ Illuminated Keys		1784005	1
DK-26SS	Digital Keypad System Narrow Stile - Stainless Steel	630	64727	1
DPS-M-BK	Door Position Switch For Metal Doors - Black	BLK	93104	1
DPS-M-GY	Door Position Switch For Metal Doors - Grey	GREY	93102	1
DPS-W-BK	Door Position Switch For Wood Doors - Black	BLK	82648	1
LML-1	Latch Monitor For Ansi 4-7/8 Strike, Spdt-3Amp		64797	2
LMS-1	Latch Monitor For Ansi 2-3/4 Strike, Spdt-3Amp		64648	2

Fax 905-738-9210, email FLASHshiporders.dss.ca@assaabloy.com or use Online Order Entry at www.assaabloydss.com/extranet by clicking the FLASHship™ icon
 Note: FLASHship™ reserves the right to limit quantities.

All products in ASSA ABLOY Door Security Solutions Canada catalogues, brochures and price lists are either patented, copyrighted or registered by ASSA ABLOY Door Security Solutions Canada.

ASSA ABLOY

The global leader in door opening solutions

Electrify on the fly



The **Steel Hawk electrified deadlatch** with patented non-handed, winged technology is the easiest way to electrify aluminum and glass doors in the field. This ANSI/BHMA Grade 1 narrow backset deadlatch adapts to any door swing right out of the box, making it the perfect no-cut replacement for MS® deadbolts and deadlatches.

Learn more at
www.adamsrite.com.



MS1850S-350-628



4510-25-201

Model #	Description	FLASHship™ #	Approx. Wt. Each (Lbs)
Deadlocks			
2331-626	Deadlock and Strike	626	93792 1.5
MS1850S-110	Maximum Security Deadlock less strike, Stainless Steel Bolt, Flat face plate, 7/8" backset, non handed	628	94881 1.5
MS1850S-210	Maximum Security Deadlock less strike, Stainless Steel Bolt, Flat face plate, 31/32" backset, non handed	628	92614 1.5
MS1850S-310	Maximum Security Deadlock less strike, Stainless Steel Bolt, Flat face plate, 1-1/8" backset, non handed	628	90731 1.5
MS1850S-150	Maximum Security Deadlock less strike, Hookbolt, Flat face plate, 7/8" backset, non handed	628	93809 1.5
MS1850S-350-628	Maximum Security Deadlock less strike, Hookbolt, Flat face plate, 1-1/8" backset, non handed	628	90741 1.5
MS1850S-450-628	Maximum Security Deadlock less strike, Hookbolt, Flat face plate, 1-1/2" backset, non handed	628	90754 1.5
MS1850SN-450-628	Maximum Security Deadlock less strike, Hookbolt, ANSI size face plate, flat face plate, 1-1/2" backset, non handed	628	90768 1.75
Deadlatches			
4510-25-201	Standard Duty Deadlatch, weather seal faceplate, flat face shape, 31/32" backset, LH or RHR, 2.63" strike - flat/standard jam	628	88221 1.25
4510-35-201	Standard Duty Deadlatch, weather seal faceplate, flat face shape, 1-1/8" backset, LH or RHR, 2.63" strike - flat/standard jam	628	88275 1.25
4900-35-101	Heavy Duty Deadlatch, 1-1/8" backset, LH or RHR (Field Reversible), 4.63" strike - flat/standard jam	628	96497 1.25
4900-35-20	Heavy Duty Deadlatch, 1-1/8" backset, LH or RHR (Field Reversible), 2.63" strike - flat/standard jam	628	89362 1.25
Flushbolts and Pivots			
1877	Cylinder operated flushbolt	628	91568 1.75

Fax 905-738-9210, email FLASHshiporders.dss.ca@assaabloy.com or use Online Order Entry at www.assaabloydss.com/extranet by clicking the FLASHship™ icon
 Note: FLASHship™ reserves the right to limit quantities.

All products in ASSA ABLOY Door Security Solutions Canada catalogues, brochures and price lists are either patented, copyrighted or registered by ASSA ABLOY Door Security Solutions Canada.

ASSA ABLOY

The global leader in door opening solutions



7100-310



4300-30-201

Model #	Description	Finish	FLASHship™ #	Approx. Wt. Each (Lbs)
Exit Devices				
8412-37136	Mortise Exit Device for single leaf aluminum stile glass doors, Bevel face, 1-1/8" backset, RHR, 628 Push Bar, 36" length	628	89817	9.75
91-0995-03	Mortise Thick Door Kit for 8300 and 8400 series exit devices - 2-1/4"		96494	0.25
91-0995-06	Mortise Thick Door Kit for 8300 and 8400 series exit devices - 3"		101899	0.25
29-0480	Dogging Key for 8000 Series Exit Devices		95868	1
Electrified Hardware				
3090-01	eForce 150 - Battery Operated Keyless entry controls device for Adams Rite latches and Exit Devices, exterior locking trim (outdoor rated), 31/32" backsets or greater, non-handed	626	585028	5.5
4300-30-201	Steel Hawk eLatch - Electrified Deadlatch, Non-handed, Field selectable (12,16, 24 VAC/VDC), 1-1/8" backset, non-monitored, mortised strike, flat/standard	628	1709140	1.25
Electric Strikes				
7100-310	For use with Cylindrical or Deadlatch, for aluminum jambs, 12V DC, Fail Secure,	628	89452	1.5
7100-510	For use with Cylindrical or Deadlatch, for aluminum jambs, 24V DC, Fail Secure,	628	89462	1.5

ASSA ABLOY

The global leader in door opening solutions

Fax 905-738-9210, email FLASHshiporders.dss.ca@assaabloy.com or use Online Order Entry at www.assaabloydss.com/extranet by clicking the FLASHship™ icon

Note: FLASHship™ reserves the right to limit quantities.

All products in ASSA ABLOY Door Security Solutions Canada catalogues, brochures and price lists are either patented, copyrighted or registered by ASSA ABLOY Door Security Solutions Canada.



4560-601



4590-02-00



4591-02-00

Model #	Description	Finish	FLASHship™ #	Approx. Wt. Each (Lbs)
Trim				
4560-501	Lever Handle, left hand or left hand reverse	130	92611	0.5
4560-601	Lever Handle, right hand or right hand reverse	130	89136	0.5
4565-501	Turn Lever, left hand or left hand reverse	130	89175	0.5
4565-601	Turn Lever, right hand or right hand reverse	130	89188	0.5
4580-601	Cam Disc (included with lever handles)		94867	0.2
4590-02-00	Paddle operator for 4900 and 4500 latches, Push to left, 1-3/4" door thick	628	89265	1.25
4590-02-02	Paddle operator for 4900 and 4500 latches, Push to left, 2-1/4" to 2-1/2" door thick	628	89272	1.25
4590-04-00	Paddle operator for 4900 and 4500 latches, Push to right 1-3/4" door thick	628	89285	1.25
4591-02-00	Ergonomic Paddle operator for 4900 and 4500 latches, Push to left 1-3/4" door thick	628	89305	2
4591-04-00	Ergonomic Paddle operator for 4900 and 4500 latches, Push to right 1-3/4" door thick	628	89325	2
Accessories and Hardware				
24-0017-0220	Aluminum flat faceplate for 4500/4700 series deadlatches	628	95432	1
24-0384-010	Aluminum flat faceplate for MS1850S, MS1850A or MS1950 long throw	628	94816	1
4066	Thumbturn Cylinder with 1/4" locking ring	130	92014	0.34
4104-01	Radius Mounting Bridge		96496	1
4104-02	Flat Mounting Bridge		92700	1
4104-03	LH Bevel Mounting Bridge		95447	1
4104-04	RH Bevel Mounting Bridge		96641	1
4902-01	Standard flat short-faced designed deadlatch strike, includes moulded black plastic dust box and steel mounting plates	630	89402	1

Fax 905-738-9210, email FLASHshiporders.dss.ca@assaabloy.com or use Online Order Entry at www.assaabloydss.com/extranet by clicking the FLASHship™ icon
 Note: FLASHship™ reserves the right to limit quantities.

All products in ASSA ABLOY Door Security Solutions Canada catalogues, brochures and price lists are either patented, copyrighted or registered by ASSA ABLOY Door Security Solutions Canada.

ASSA ABLOY

The global leader in door opening solutions



Industry-Leading Brands

To bring you the best and most complete security and life-safety solutions, ASSA ABLOY provides the products of brands known for quality, service and innovation. This group of hardware manufacturers works together to create openings that are strong, durable and meet today's needs for advanced safety and security solutions.



ARCHITECTURAL DOOR ACCESSORIES™

Markar | McKinney | Pemko | Rockwood
Hinges, door seals, thresholds, sliding door hardware,
door pulls, door stops, protection plates

ADAMS RITE

Mechanical and electromechanical locking
systems, electric strikes, exit devices, and
integrated door assemblies

HES

Electric strikes, cabinet locks, locking devices and
security accessories

NORTON

Mechanical and electromechanical door closers.

RIXSON

Concealed closers, pivots and mechanical/
electromechanical door holders

SECURITRON

Electromagnetic locks, power supplies, keypads,
egress systems, and push buttons; MagnaCare®
lifetime warranty

YALE

Mortise, cylindrical and auxiliary locks, exit devices,
door closers, electromechanical products and
key systems

**We are where you are.
Connect with us online:**



www.facebook.com/assaabloydss



www.twitter.com/assaabloydssca

ASSA ABLOY is the global leader in door opening solutions, dedicated to satisfying end-user needs for security, safety and convenience

ASSA ABLOY

ARCHITECTURAL DOOR ACCESSORIES™

Markar | McKinney | Pemko | Rockwood

ADAMS RITE | HES | NORTON | RIXSON | SECURITRON | YALE

ASSA ABLOY Door Security Solutions Canada

160 Four Valley Drive

Vaughan, ON L4K 4T9

905.738.2466 | 800.461.3007

www.assaabloydss.ca