

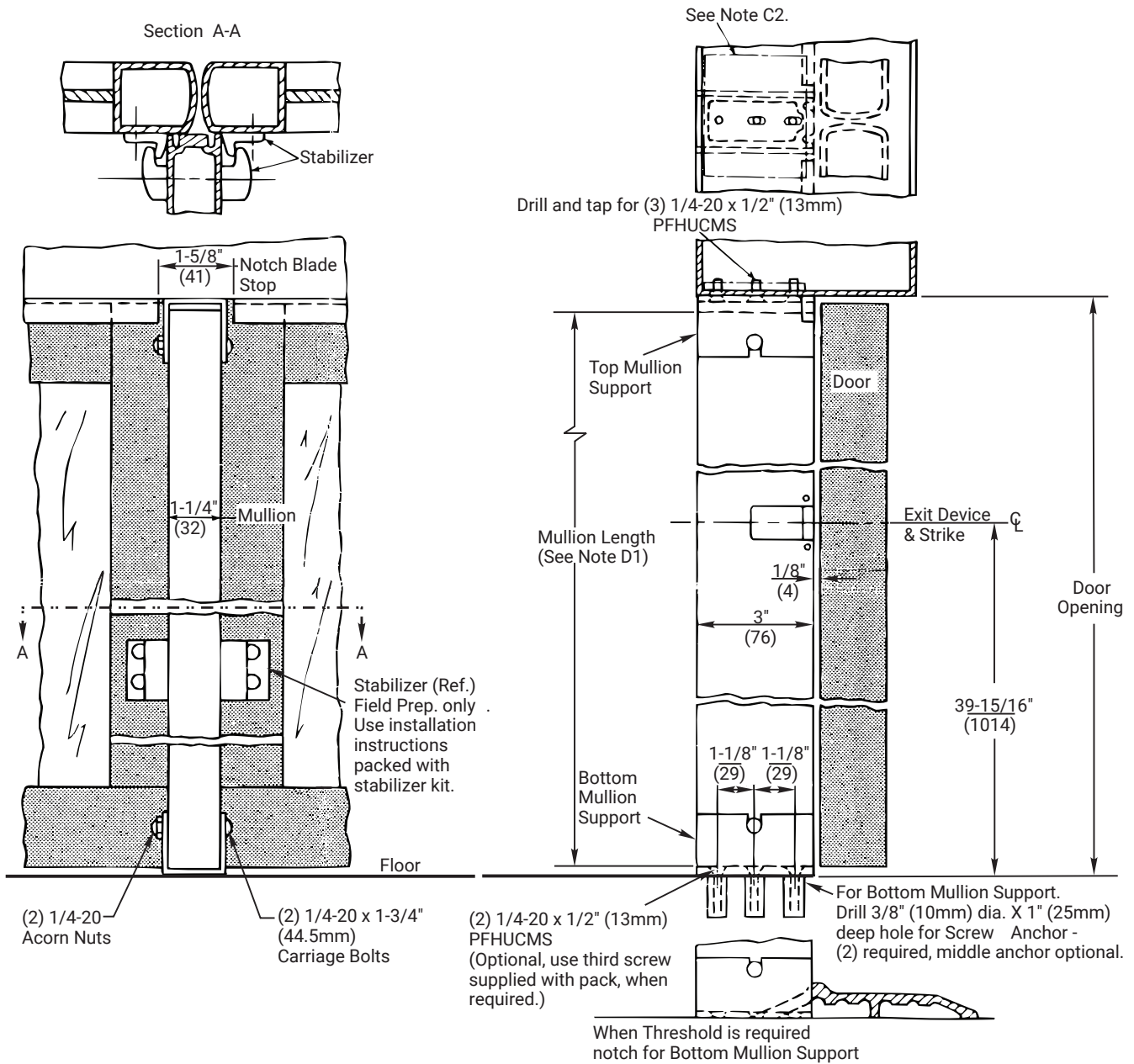
M300

Mullion

Installation Instructions

ACCENTRA

ASSA ABLOY



⚠ WARNING

This product can expose you to lead which is known to the state of California to cause cancer and birth defects or other reproductive harm. For more information go to www.P65warnings.ca.gov.

⚠ WARNING

Attention Installer: Any retrofit or other field modification to a fire rated opening can potentially impact the fire rating of the opening, and ASSA ABLOY makes no representations or warranties concerning what such impact may be in any specific situation. When retrofitting any portion of an existing fire-rated opening, or specifying and installing a new fire-rated opening, please consult with a code specialist or local code official (Authority Having Jurisdiction) to ensure compliance with all applicable codes and ratings.

1-855-557-5078 Ext. 2 • www.accentra-assaabloy.com

80-7401-0300-000 04/24

A. Installation Sequence

1. Close both doors. Find the centerline between both doors and mark line perpendicular to door face on frame soffit or header. Drop plumb line to floor and mark line on floor perpendicular to door face. This is the centerline of the mullion.

B. Bottom Support - Floor Mounted

1. Using bottom mullion support as template, center support on marked line 1/8" (4mm) from closed door.
2. Spot and prepare (2) outside screw anchor holes, middle anchor optional.
3. Install screw anchors: Place the anchor in the prepared hole, place punch through the threaded hole of the anchor, drive with a hammer until seated, remove punch and bolt mullion support to floor with (2) 1/4-20 x 1/2" (13mm) PFHUCMS.

C. Top Support - Frame Mounted

1. Using Top Mullion Support as a Template, center with mark on frame soffit and flush with door side of stop.
2. Spot and prepare (3) holes (#7 drill .201" (5mm) dia. hole and tap 1/4-20 thread).

Note: All mounting holes in soffit should be provided with reinforcement plates by the frame manufacturer.

3. Install Top Mullion Support to frame soffit with (3) 1/4-20 x 1/2" (13mm) PFHUCMS.

D. Prepare and Install Mullion

1. To determine mullion length, measure distance from finished floor to top mounting surface upon which Top Mullion Support is mounted. Subtract 1/2" (13mm). Cut to this dimension on TOP END of mullion.

Note: Mullion is furnished to suit 8' high doors, If field cut is required, mark and drill .281" (7mm) dia. hole thru both walls on TOP END of mullion.

2. Install mullion into supports. Install and tighten top and bottom 1/4-20 nuts and bolts.

E. Mullion Stabilizer Installation

1. See Mullion Stabilizer Kit Instructions for location and installation.

M300
Mullion
Installation Instructions



