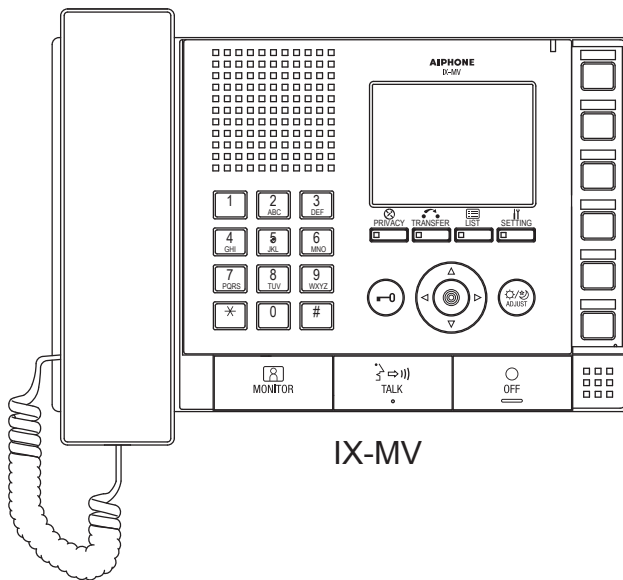


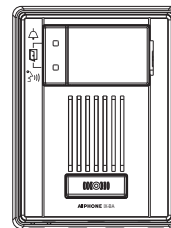
IX SYSTEM

IP Network-Compatible System

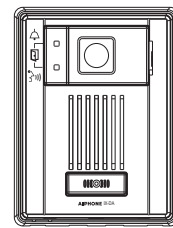
Quick Start Programming Guide



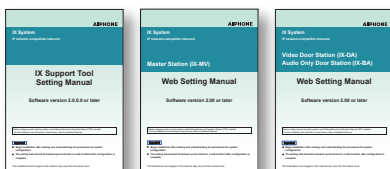
IX-MV



IX-BA



IX-DA



ATTENTION:

This is an abbreviated programming manual, addressing basic program settings for an IX System using the IX Support Tool. A complete set of instructions (*IX Web Setting Manual / IX Operation Manual / IX Support Tool Setting Manual*) can be found on the DVD-ROM provided with the IX-MV Master Station.

GENERAL OVERVIEW:

For basic system programming, all steps are REQUIRED unless marked OPTIONAL. Refer to the IX Support Tool Setting Manual on the DVD-ROM included with the IX-MV for complete programming information.

- Step 1:** Change PC Network Settings (*OPTIONAL*)
- Allows the PC to communicate with the Door Stations and Master Stations.
- Step 2:** Opening IX Support Tool
- Open program, define size of system, and name of system.
- Step 3:** Station Information - Customizing Station Numbers and Names (*OPTIONAL*)
- Create unique station numbers and names.
- Step 4:** Network Settings
- Assign IP address (batch).
(Refer to the IX Support Tool Setting Manual when using an IPv6 network)
- Step 5:** Association Settings
- Link station settings to stations found in Search.
- Step 6:** System Information - Address Book "Master Station" (*OPTIONAL*)
- Add or remove stations from the Address Book.
- Step 7:** Call Settings - for Door Stations
- Select called station, call level, and broadcast method.
- Step 8:** Setting the Time
- Manually enter time or sync time with PC.
- Step 9:** Updating the System
- Uploading setting file to stations (batch).

Step 1: Change Network Settings (*OPTIONAL*)

The Door Station and Master Station's default IP address is https://192.168.1.160. The PC will need to be set in the same subnet in order to connect to the Door Stations and Master Stations.

- A. Open **Control Panel**
- Windows XP® (Classic View) → **Network Connections** → Double click **Local Area Connection** to open **Connection Status** window.
- Windows 7® (Category View) → **Network and Internet** → **View network status and tasks** → Click **Local Area Connection** to open the **Local Area Connection Status** window.
- B. Click the **Properties** button to open **Local Area Connection Properties** window.
- C. Scroll down and left click **Internet Protocol (TCP/IP)** then click **Properties** button to open **Internet Protocol Properties** window.
- D. Select the **Use the following IP address** radio button. Type in the IP address 192.168.1.100 (the last number can be any valid host address except 160) and change the subnet mask to 255.255.255.0. Click [OK].
- E. Click [OK] in **Connection Properties** window to accept these changes.

Step 2: Opening IX Support Tool

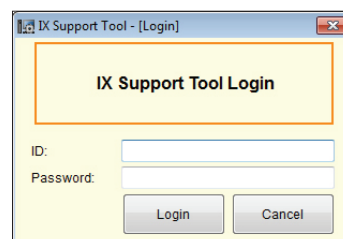
Step 2.1 Connect all IX stations and the programming PC to the same network.

Step 2.2 Install the IX Support Tool on the programming PC.

Step 2.3 Open the IX Support Tool.

Step 2.4. Log in. Default Settings:

ID: admin
Password: admin



Step 2: Open IX Support Tool (continued)

Step 2.5 The New System screen will appear (Figure 2-B). Enter in quantity of:

Master Stations
Video Door Stations
Audio Only Door stations
System Name

Step 2.6 Select appropriate radio button for door release.

Figure 2-B: New System Screen

Step 2.7 The IX Support Tool Settings Table View will be displayed with default station numbers and station names (Figure 2-C). To customize, proceed to Step 3.

Figure 2-C: Table View with default names

#	Number	Name	Name (furigana)	Location	Type
001	001	Master Station1			Master Station
002	002	Master Station2			Master Station
003	003	Video Station1			Video Door Station
004	004	Audio Station1			Audio Only Door Station
005					
006					
007					
008					
009					

Step 3: Station Information - Customizing Station Numbers and Names (OPTIONAL)

Step 3.1 Select **Number** cell to be changed. Selection will turn orange.
-Enter custom number (3-5 digits) Edit will turn pink.

Step 3.2 Select **Name** cell to be changed. Selection will turn orange.
-Enter custom name (no special characters allowed) Edit will turn pink.

Step 3.3 Click  to save changes.

Note:



Location is only accessible after the Location Registry has been filled out.

Note:



Name (furigana) is only accessible when using Japanese or Chinese language.

Figure 3-A: Customizing Numbers and Names

#	Number	Name	Name (furigana)	Location	Type
001	100	Master Station1			Master Station
002	002	Master Station2			Master Station
003	003	Video Station1			Video Door Station

Step 4: Network Settings

Step 4.1 From menu on left, under Network Settings, select IP Address.

- Click on **Batch IP Address Configuration**.

Step 4.2 Enter starting IP Address, and Subnet Mask (see Figure 4-A).

Step 4.3 Select All from the Select Station(s) by type drop-down menu to apply IP Address and Subnet Mask to all stations.

- Click **Select**.
- Click **OK**.

Step 4.4 A pop-up will occur asking Select Station's IP Address will be batch configured. Continue? (see Figure 4-B).

- Click **OK**.

Step 4.5 Click **Update** on the main page to save changes.

Figure 4-A: Batch IP Address Configuration

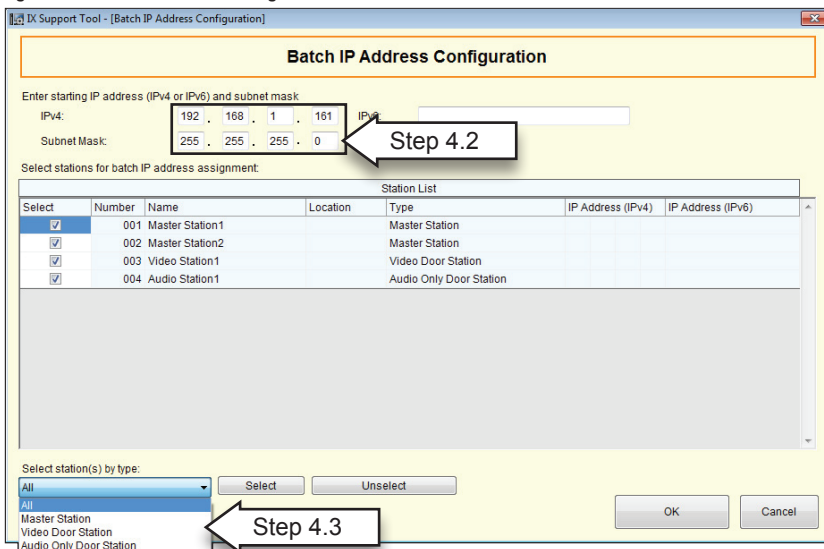
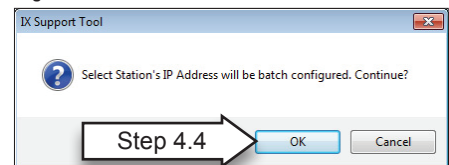


Figure 4-B: Continue?



Note:

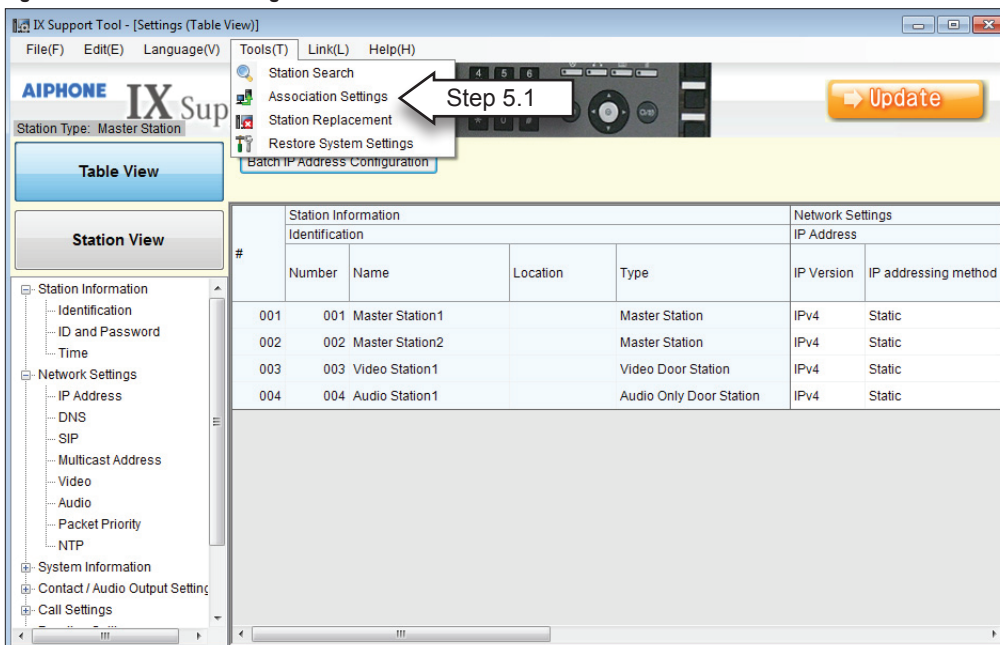


Enter the IP address and subnet mask individually when not using the Batch IP Address Configuration.

Step 5: Association Settings

Step 5.1 From the Tools(T) drop-down menu, select Association Settings (see Figure 5-A).

Figure 5-A: Association Settings



Step 5: Association Settings (continued)

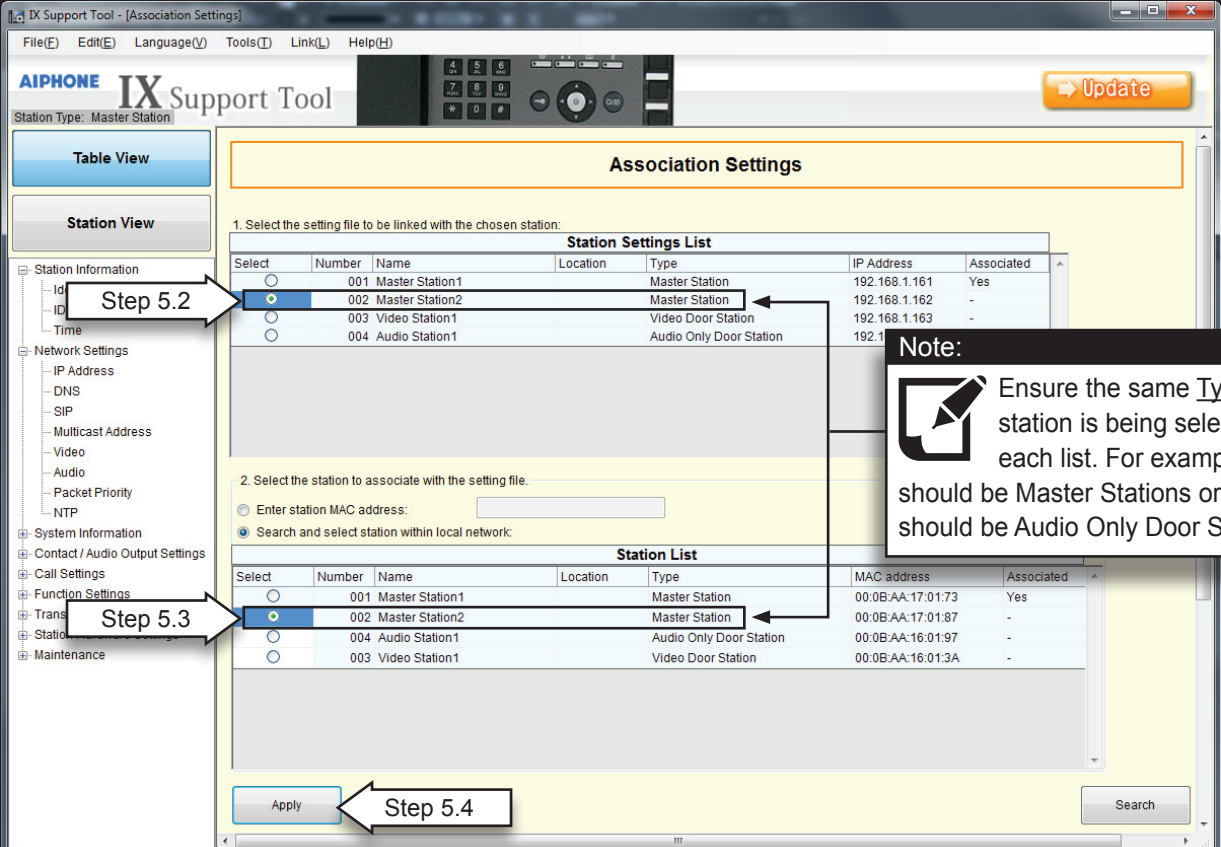
When the Association Setting window appears:

Step 5.2 Select a station from the Station Settings List (upper window).

Step 5.3 Select a station from the Station List (middle window).

Step 5.4 Once both have been selected, click **Apply** (see Figure 5-B).

Figure 5-B: Association Setting Window (Station Settings List / Station List)



The screenshot shows the 'Association Settings' window with two tables. The top table, 'Station Settings List', has columns: Select, Number, Name, Location, Type, IP Address, and Associated. The bottom table, 'Station List', has columns: Select, Number, Name, Location, Type, MAC address, and Associated. Arrows indicate the selection process for Step 5.2 and Step 5.3. The 'Apply' button is highlighted for Step 5.4. A note box provides instructions on selecting stations of the same type.

Select	Number	Name	Location	Type	IP Address	Associated
<input type="radio"/>	001	Master Station1		Master Station	192.168.1.161	Yes
<input checked="" type="radio"/>	002	Master Station2		Master Station	192.168.1.162	-
<input type="radio"/>	003	Video Station1		Video Door Station	192.168.1.163	-
<input type="radio"/>	004	Audio Station1		Audio Only Door Station	192.168.1.164	-

Select	Number	Name	Location	Type	MAC address	Associated
<input type="radio"/>	001	Master Station1		Master Station	00:0B:AA:17:01:73	Yes
<input checked="" type="radio"/>	002	Master Station2		Master Station	00:0B:AA:17:01:87	-
<input type="radio"/>	004	Audio Station1		Audio Only Door Station	00:0B:AA:16:01:97	-
<input type="radio"/>	003	Video Station1		Video Door Station	00:0B:AA:16:01:3A	-

Stations that have been associated will appear in the Associated Stations List (bottom window).

Repeat steps above until all stations have been associated (see Figure 5-C).

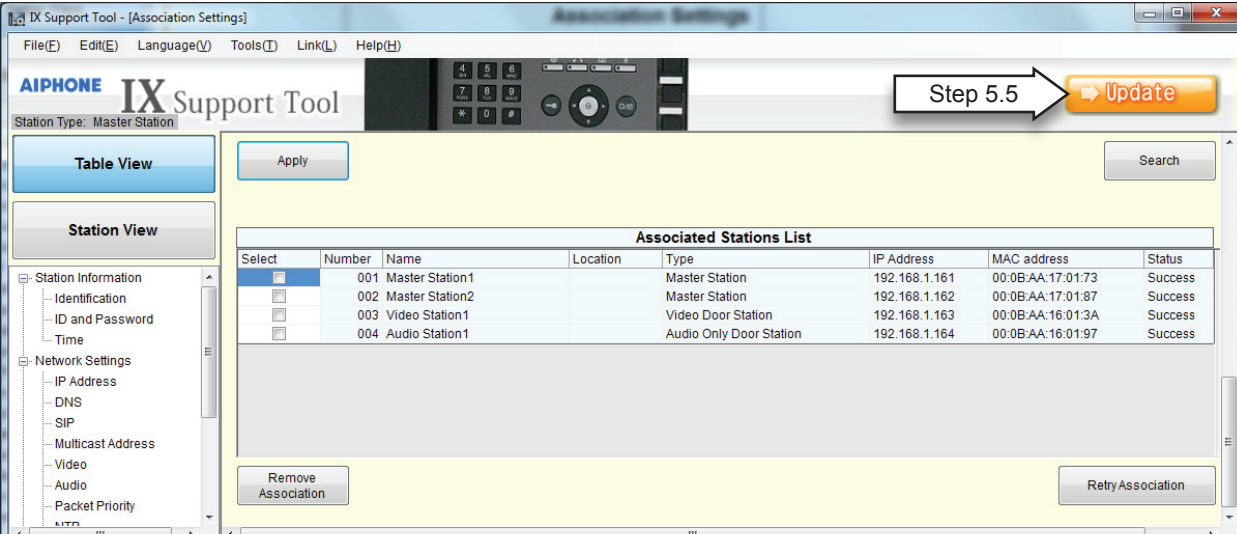
Step 5.5 Click **Update** to save changes.

Note:



Stations will reboot after being associated. This could take up to 10 minutes.

Figure 5-C: Association Setting Window (Associated Stations List)



The screenshot shows the 'Associated Stations List' table with columns: Select, Number, Name, Location, Type, IP Address, MAC address, and Status. The 'Update' button is highlighted with an arrow labeled 'Step 5.5'. The 'Remove Association' and 'Retry Association' buttons are also visible.

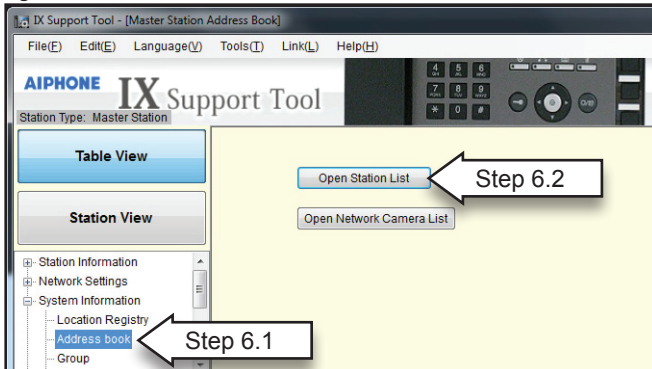
Select	Number	Name	Location	Type	IP Address	MAC address	Status
<input checked="" type="checkbox"/>	001	Master Station1		Master Station	192.168.1.161	00:0B:AA:17:01:73	Success
<input checked="" type="checkbox"/>	002	Master Station2		Master Station	192.168.1.162	00:0B:AA:17:01:87	Success
<input checked="" type="checkbox"/>	003	Video Station1		Video Door Station	192.168.1.163	00:0B:AA:16:01:3A	Success
<input checked="" type="checkbox"/>	004	Audio Station1		Audio Only Door Station	192.168.1.164	00:0B:AA:16:01:97	Success

Step 6: System Information - Address Book “Master Station” (Optional)

Step 6.1 From menu on left, under System Information, select Address Book (see Figure 6-A).

Step 6.2 Click **Open Station List** to view the Address Book.

Figure 6-A: Address Book



Note:



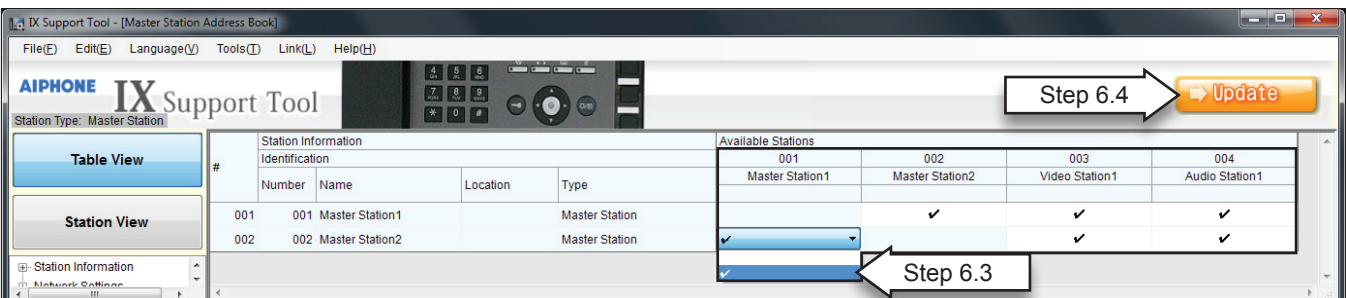
By default, all stations will be listed in each address book. Each address book can hold a maximum of 500 stations.

Step 6.3 To Remove or add stations to an Address Book (see Figure 6-B).

- In the Available Stations list, select appropriate icon from drop-down menu
- “√” = Display in address book , “ ” (blank space) = Do not display in address book.
- *Changed stations will turn pink.*

Step 6.4 Click **Update** to save changes.

Figure 6-B Address Book



Step 7: Call Settings (for Door Stations)

Step 7.1 From menu on left, under Call Settings, select Called Stations (for Door Stations) (see Figure 7-A).

Step 7.2 In the Call Settings column, select the call-in level.

- Normal = low level
- Priority = mid level
- Urgent = high level

Step 7.3 Click **Open Called Station List**

Step 7.4 When Save changes? pop-up appears, (see Figure 7-B), click **YES**.

Figure 7-A: Call Settings window

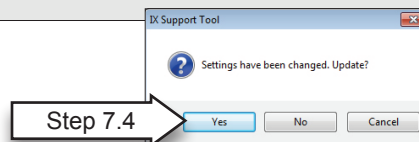
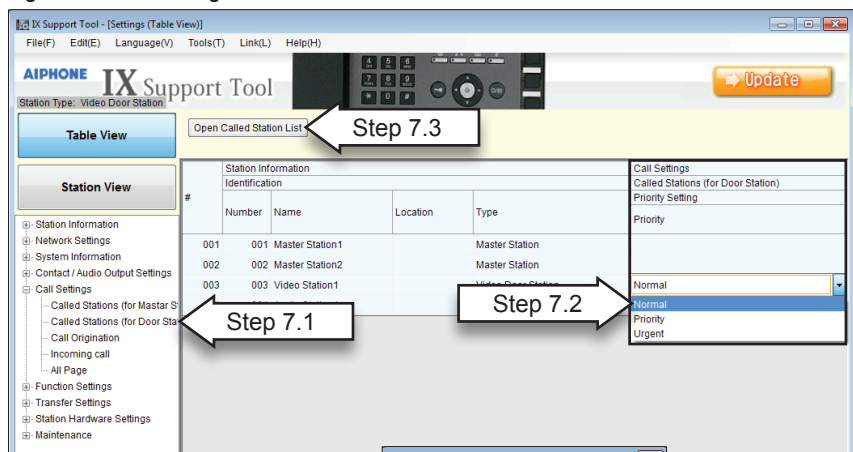


Figure 7-B: Save Changes? window

Step 7: Call Settings (continued)

Step 7.4 In the Open Called Station List (see Figure 7-C), select call method from drop-down menu.

U = Unicast

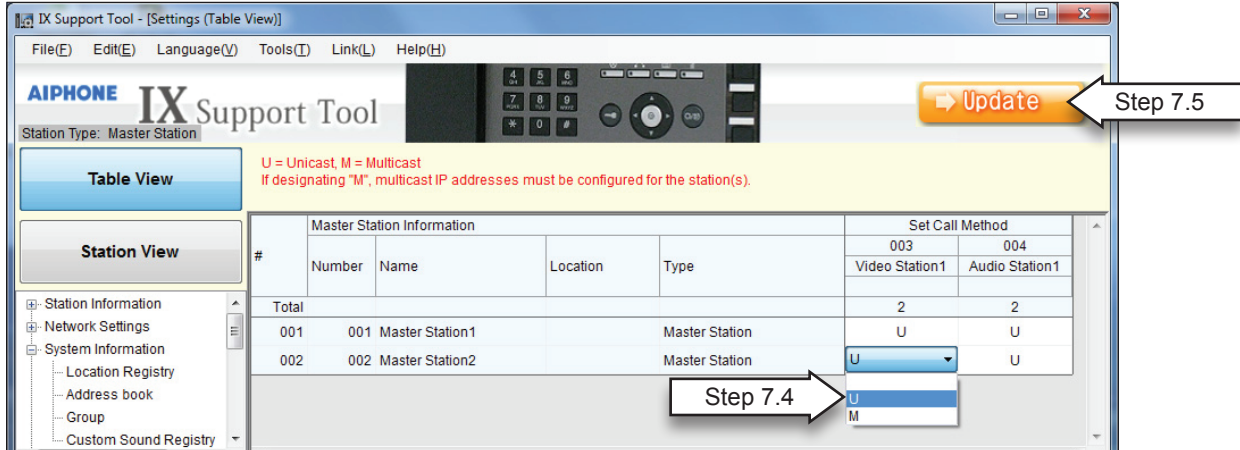
M = Multicast

Blank space = No call or not call (blank space)

Changes will be shown in pink.

Step 7.5 Click  to save changes.

Figure 7-C: Open Call List window



Step 8: Setting the Time

Step 8.1 From menu on left, under Station Information, select Time (see Figure 8.1).

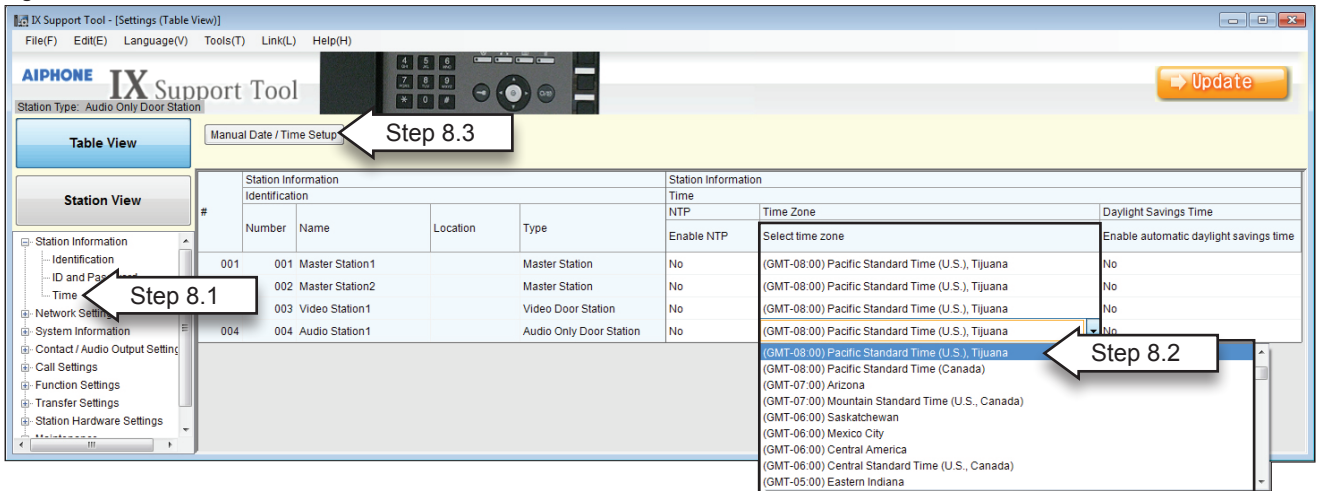
Step 8.2 In the Select time zone column, select the appropriate time zone from the drop-down menu.

Changes will be shown in pink.

Step 8.3 Click **Manual Date / Time Setup**.

Step 8.4 When pop-up appears asking to Save changes, click **OK**.

Figure 8-A: Time Zone window

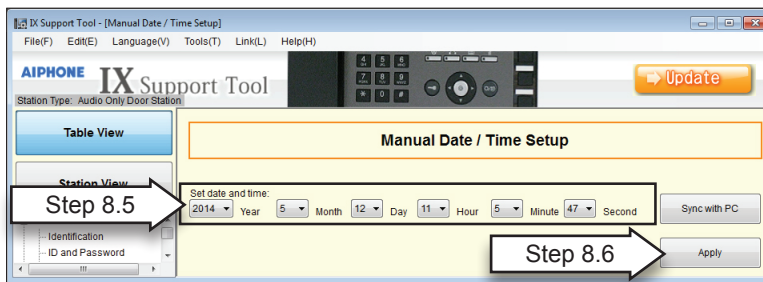


Step 8: Setting the Time (continued)

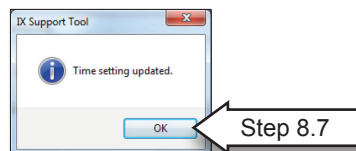
Step 8.5 In the Manual Date / Time Setup window:
 - Enter in current date and time.
 or
 - Click **Sync With PC**.

Step 8.6 Then click **Apply** (see Figure 8-B).

Figure 8-B: Manual Date / Time Setup



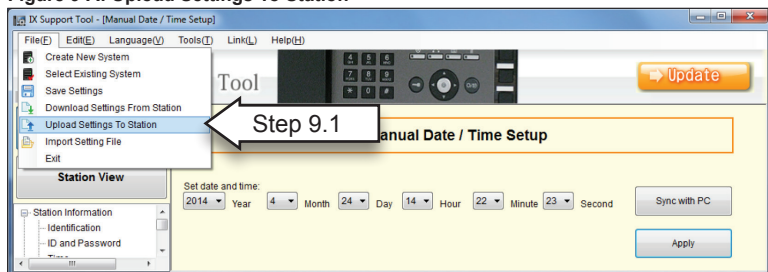
Step 8.7 When Time setting updated pop-up appears, click **OK**.



Step 9: Updating the System

Step 9.1 From the File(F) drop-down menu, select Upload Settings To Station. (see Figure 9-A).

Figure 9-A: Upload Settings To Station



Step 9.2 Use the Select station(s) by type drop-down menu to select all stations or stations by type.

Step 9.3 Click **Select** (see Figure 9-B).

Step 9.4 When stations have been selected (checkmark displayed in the Select column) click **Start Upload** (see Figure 9-B).

Step 9.5 The status of the upload will be displayed for each station in the Status column displaying either Success or Failed (see Figure 9-C).

Figure 9-B: Upload Settings To Station

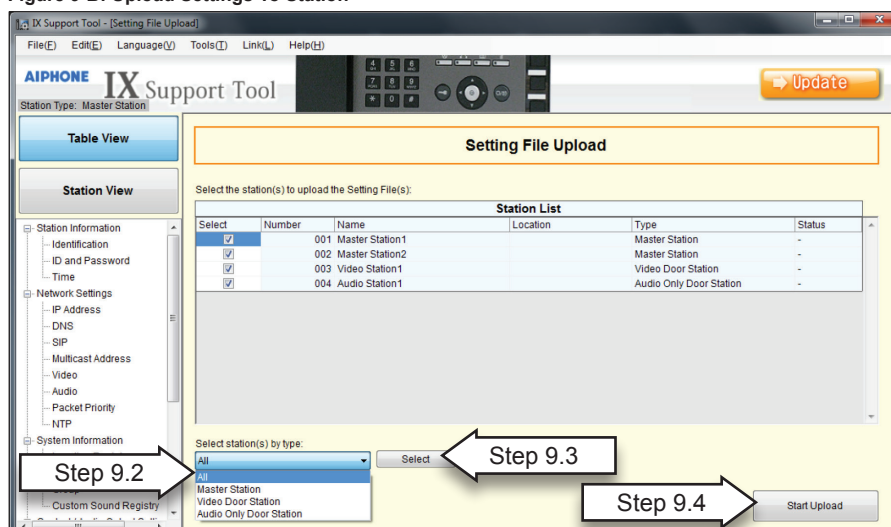


Figure 9-C: Upload Status

