



**ALARM LOCK**

345 Bayview Avenue  
Amityville, New York 11701  
For Sales and Repairs 1-800-ALA-LOCK  
For Technical Service 1-800-645-9440

© ALARM LOCK 2002

# DL-Windows

## Version 3.0

### SOFTWARE INSTALLATION INSTRUCTIONS

WI 1056B 8/02

## IMPORTANT: YOU MUST RUN THIS UTILITY PRIOR TO RUNNING DL-WINDOWS VERSION 3.0

- If you are a new user of DL-Windows or will be creating new Accounts only, proceed with the typical installation as outlined in the DL-Windows User's Guide OI279.

The first time DL-Windows 3.0 is run, **you must use the following Import utility to update your database files before accessing your Accounts.**

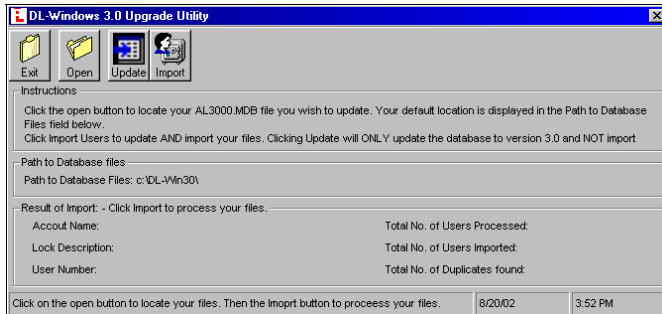
If you are still having trouble finding your database files, see the "Find Utility" section on the back of this page for help.

1. Click **Start, Programs, DL-Windows, Import Utility.**

The following popup appears:



2. Press **OK** and the following **DL-Windows Upgrade Utility** screen appears:



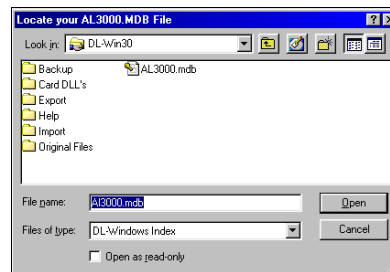
**Note:** This Update Database utility was formerly located in the **DataBase Maintenance** screen, in DL-Windows.

3. In the **Path to Database Files** area, the path indicated is the default path as defined by the DL-Windows **Options** screen. Your database files should be located here.

**If this default path is NOT correct**, press **Open** to locate the database files you wish to update. If path is correct, go to the next step.



4. In the **Locate** dialog (below), select to highlight the AL3000.mdb file and press **Open**.



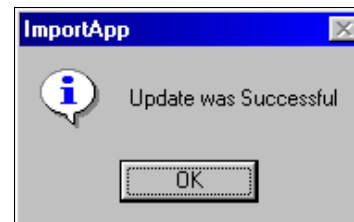
**Note:** The path selected will appear in the **Path to Database files** area of the **DL-Windows Upgrade Utility** screen.

5. Press **Import** to update the database files AND import Users into the **Global Users** screen..



**Note:** Clicking **Update** will update the database to version 3.0 ONLY and will not import Users.

When the updating of the database files completes successfully, the following popup appears (below).



6. Press **OK** to close the popup, and press **Exit** to close the utility screen.

## Find Command

If you are not sure where your DL-Windows Account files currently reside, the Windows **Find** command can be used to establish their current location.

- ☞ Click **Start**, **F**ind, and select **F**iles or **F**olders...
- ☞ In the **N**amed field, type: \*.mdb
- ☞ The **L**ook in field should indicate the hard drive where they most likely reside (default = C:)
- ☞ Click **F**ind **N**ow (see Figure 1a, at right)

The file name "AL3000.mdb" will now be listed along with the name of the folder (directory) in which they reside (see Figure 1b, at right).



Figure 1a

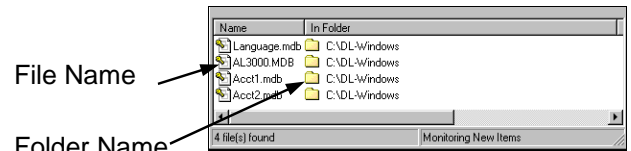


Figure 1b