

DL Windows software

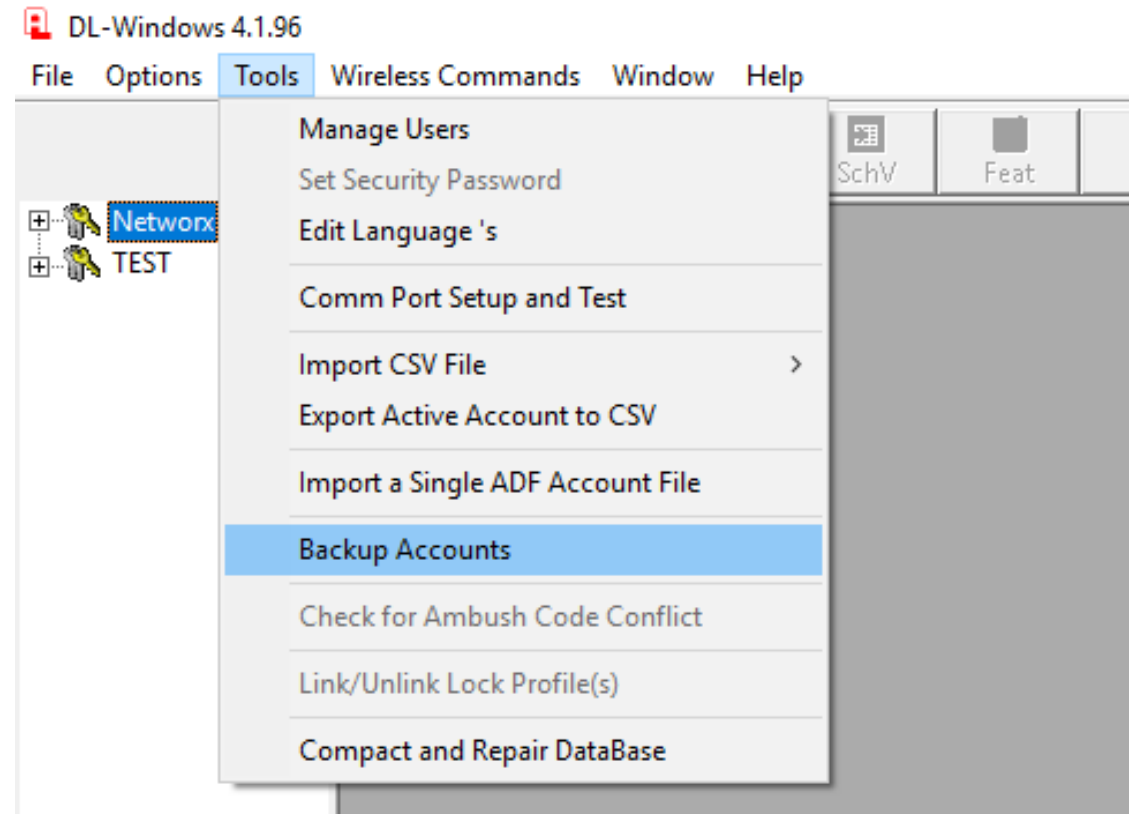
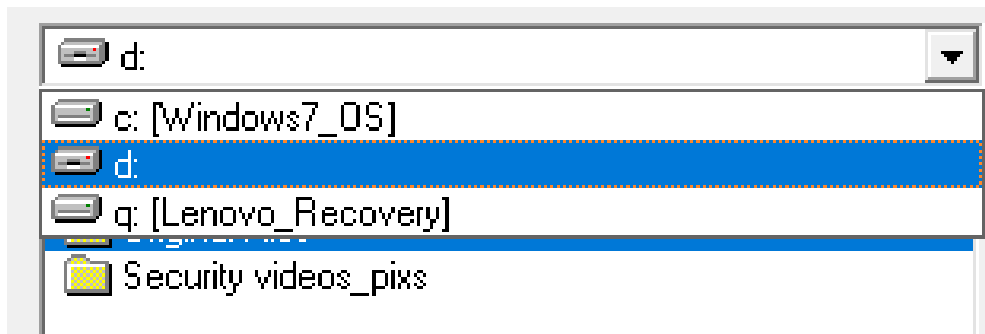
How to migrate data between computers when installing the software
onto a different computer

Version 4.1.96 and older

Version 4.1.96 and older

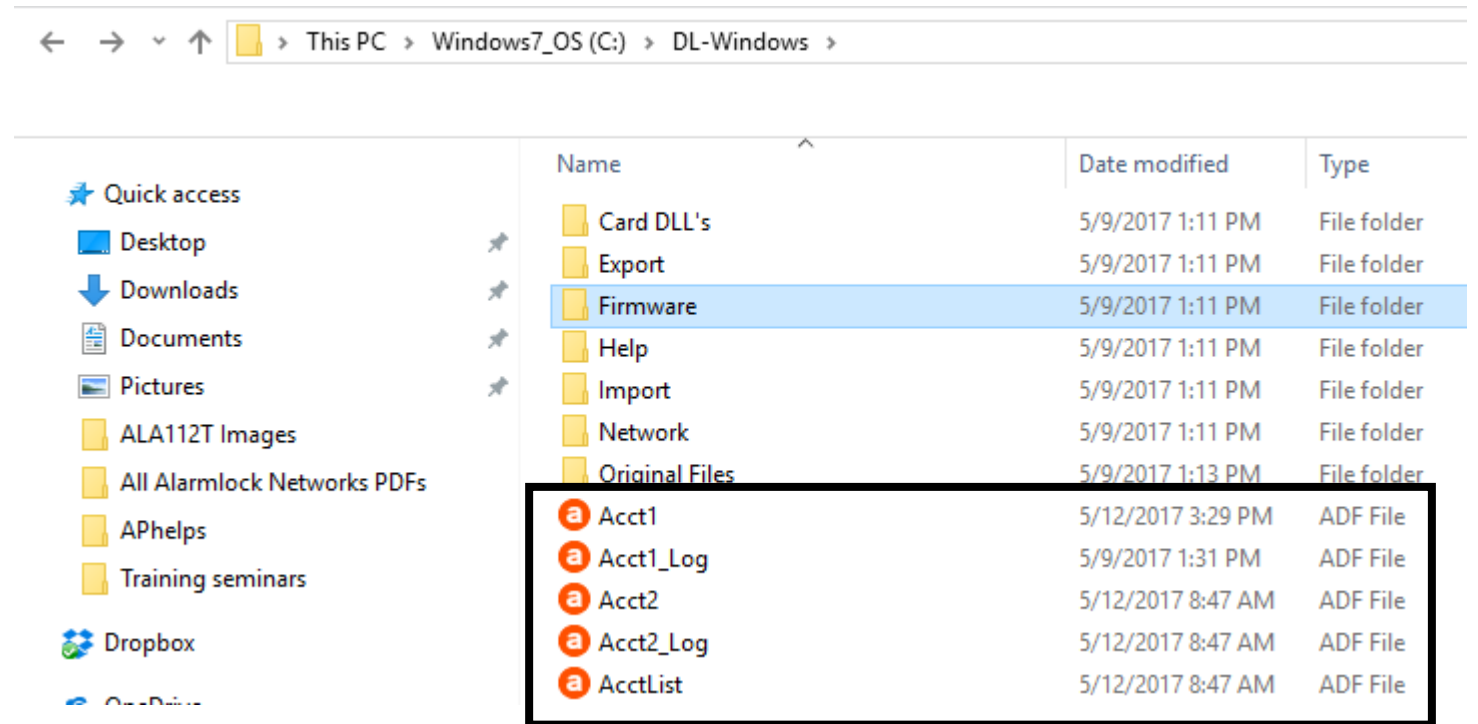
- First create a backup of the data on the original computer
- Choose where you would like to back the files up to. You can use the original folder or a thumb drive.

Backup Accounts



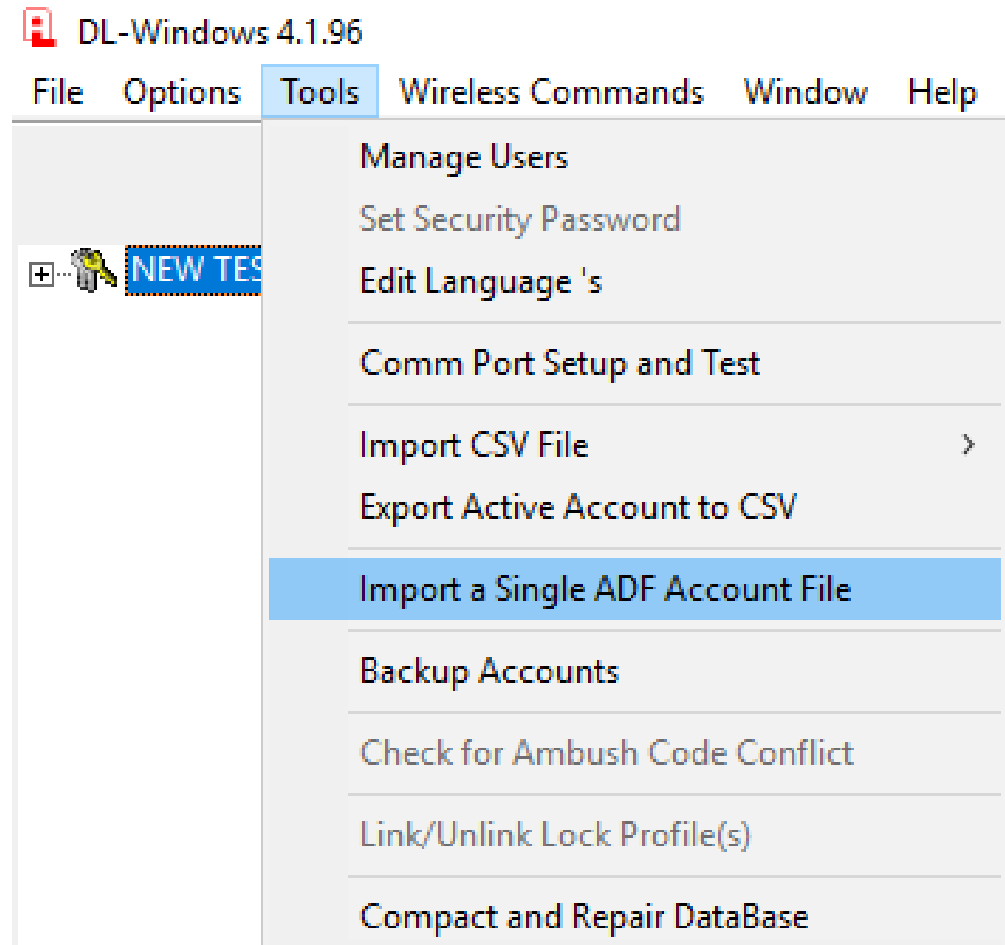
Version 4.1.96 and older

- If you backed up to the C drive, locate the .adf files.
- Copy those files to a device to move them to the new computer.
- If you copied to a thumb drive, you are ready to import to the new computer.



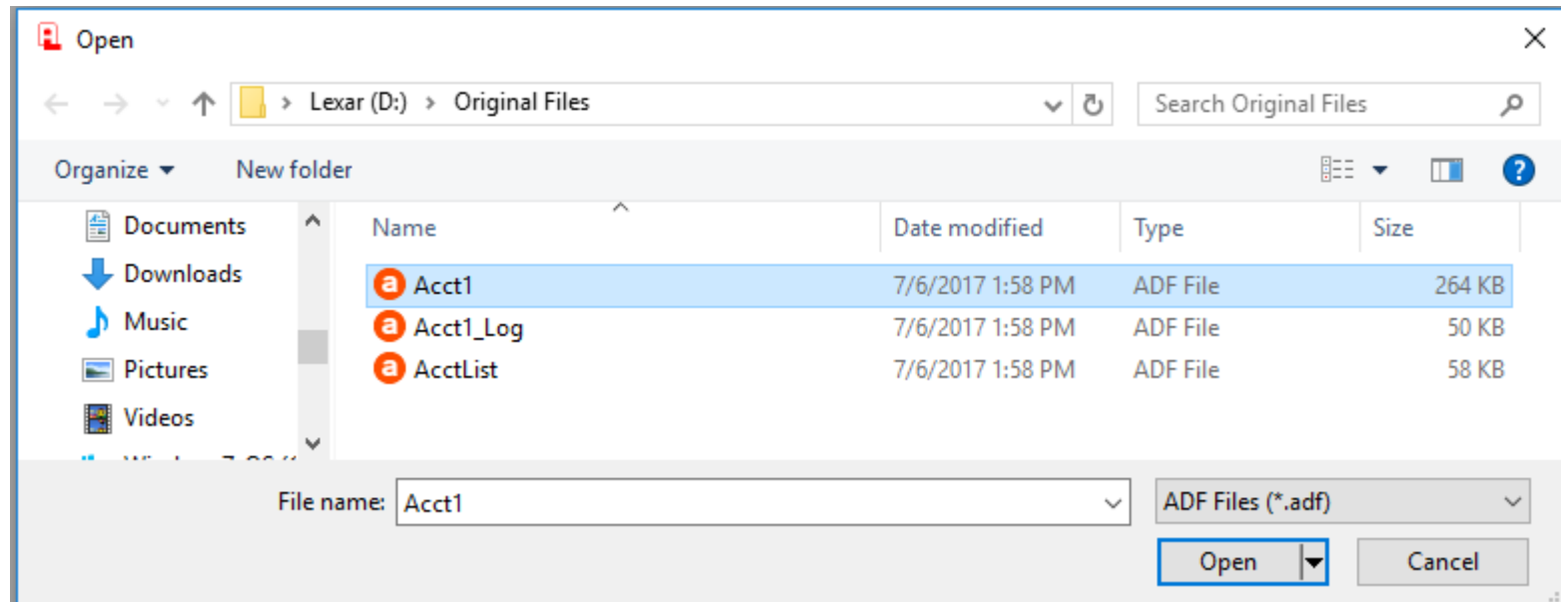
Version 4.1.96 and older

- After the same version of DL Windows is installed on the new computer, click on TOOLS and Import a single ADF file.



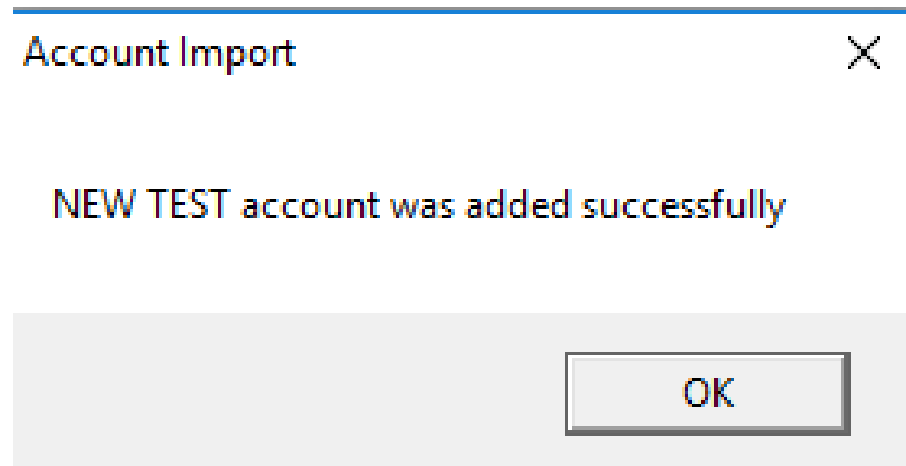
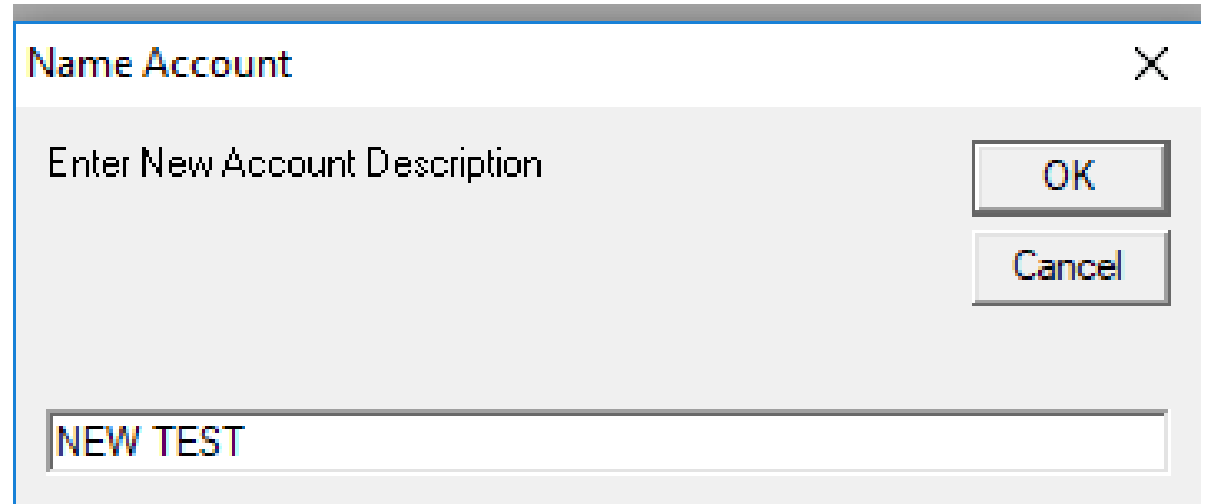
Version 4.1.96 and older

- Locate the files on the device that you copied them to.
- Click on Acct1 and then click on open to import the files.
- If there are multiple accounts, each one will need to be imported separately.



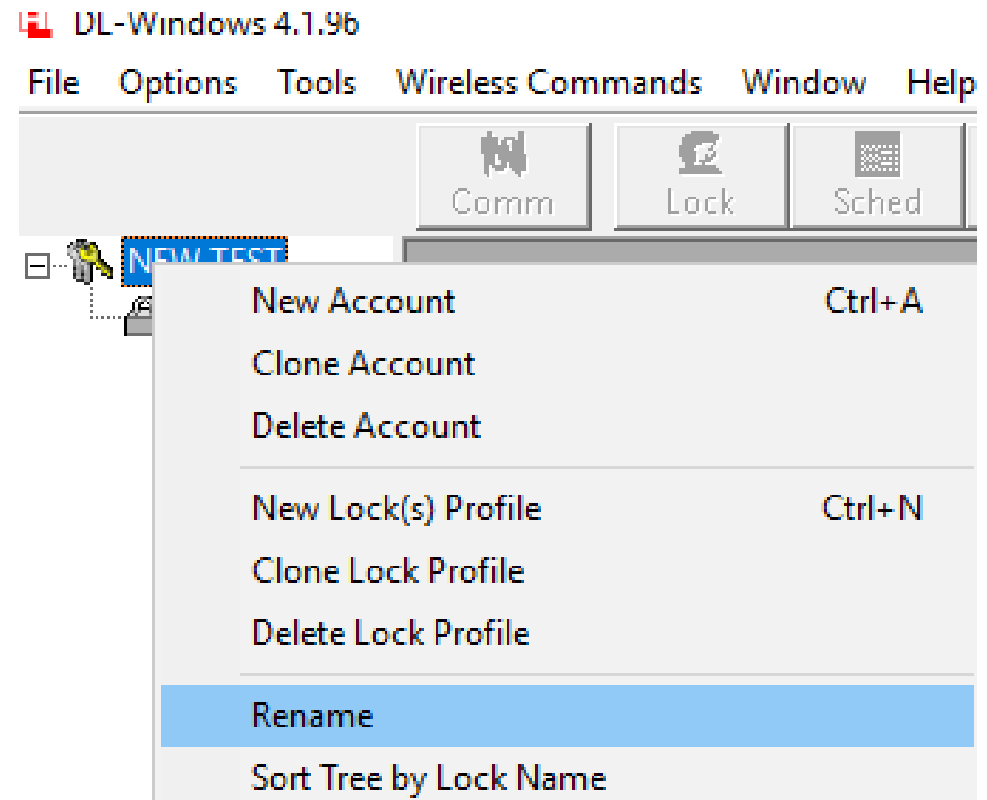
Version 4.1.96 and older

- Name each account when importing.



Version 4.1.96 and older

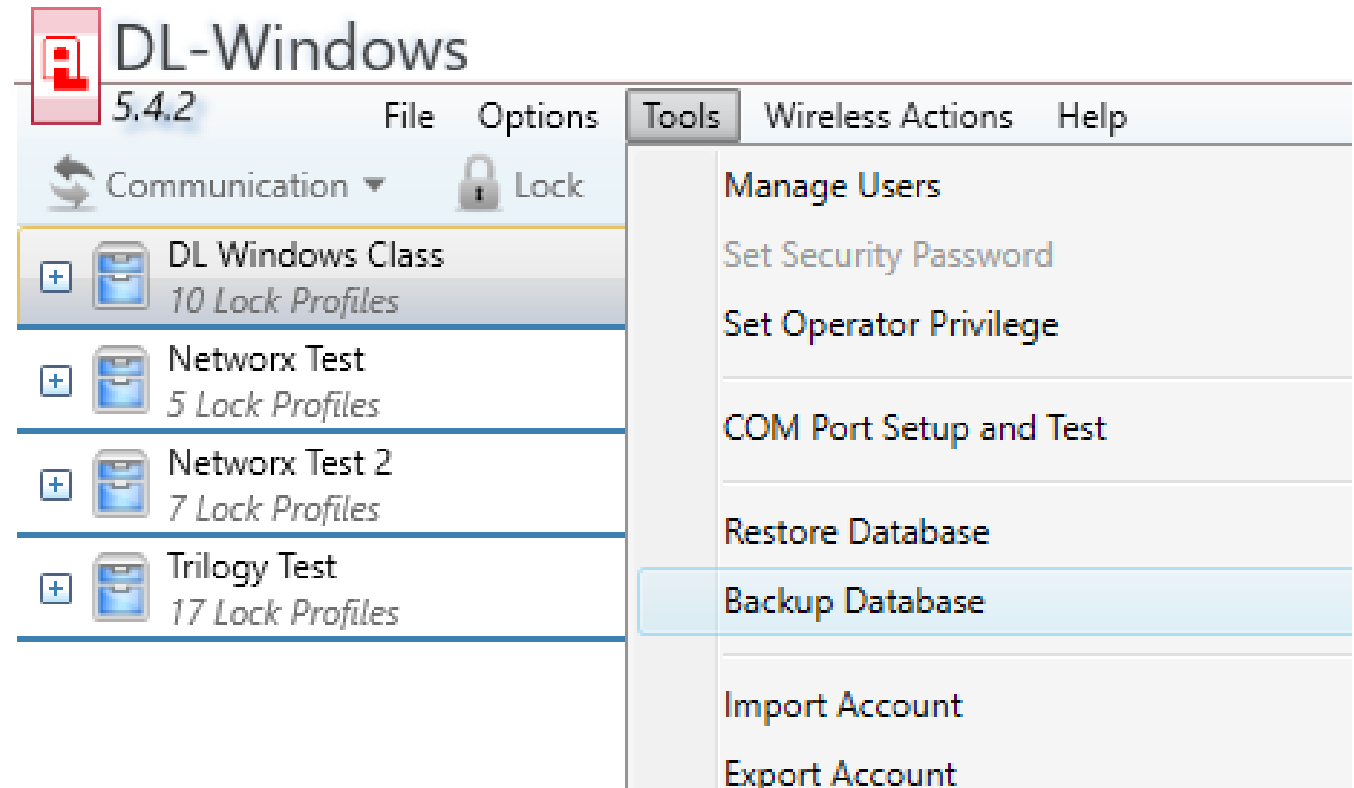
- You may need to rename the account once it is imported.
- Right click on the account name and click on Rename.
- All lock profiles, user, etc will now be in the new computer



Version 5.1.1 and newer

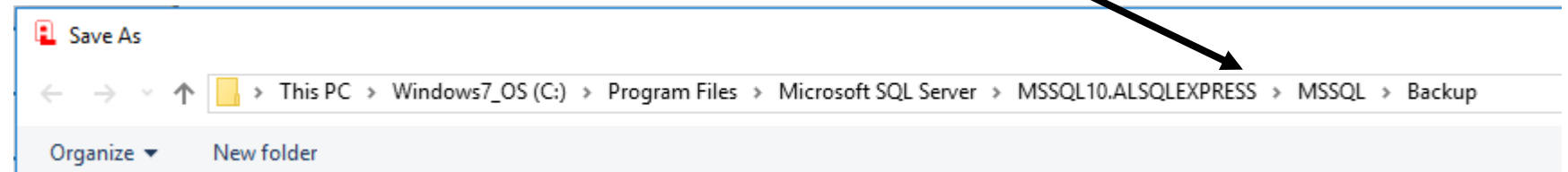
5.1.1 and newer

- Create a backup of the software on the original computer
- Click on TOOLS and then Backup Database

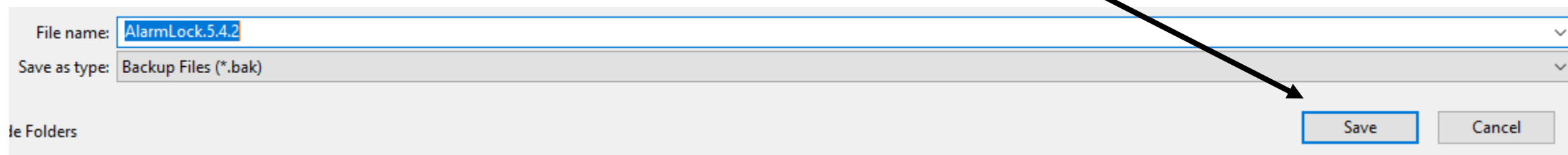


5.1.1 and newer

- Make note of the location of the backup file

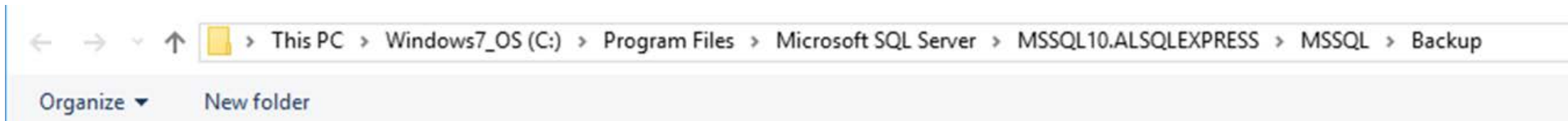


- Click Save



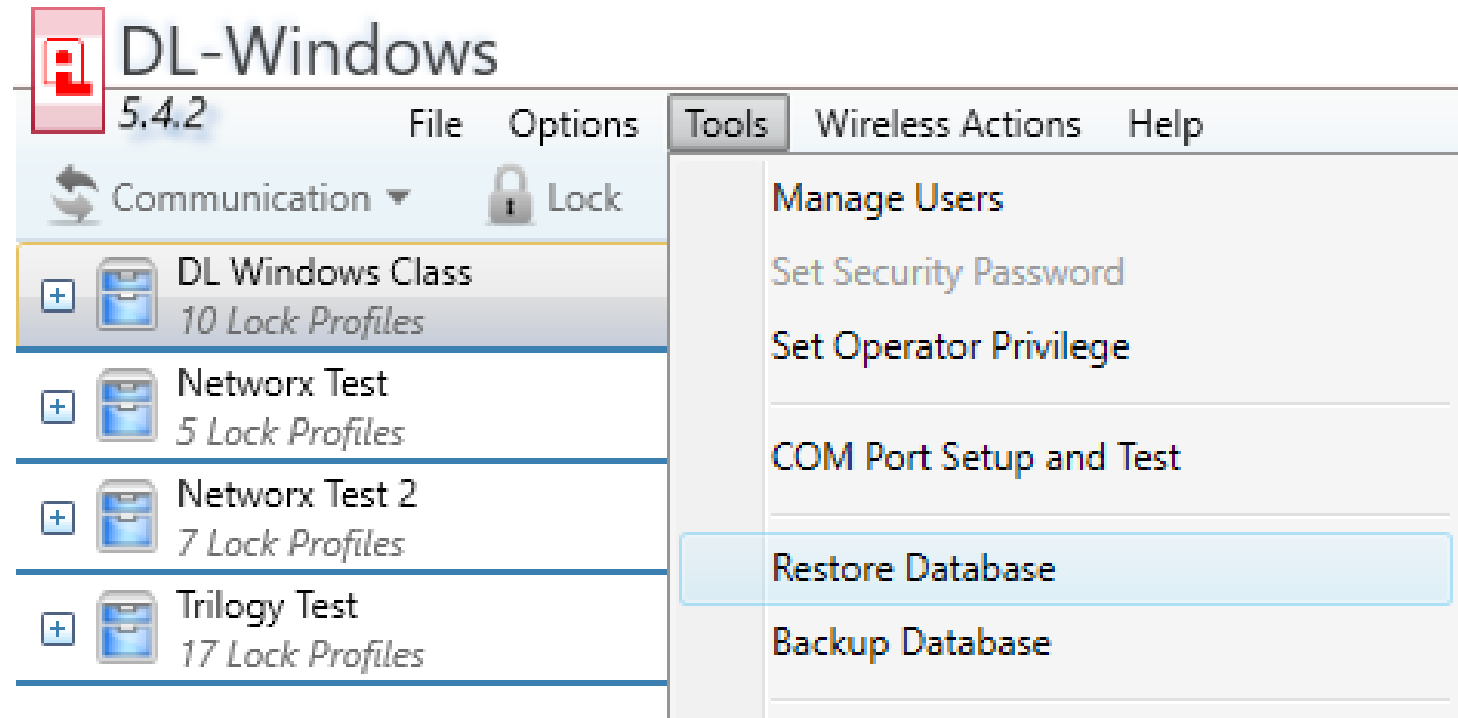
5.1.1 and newer

- Copy backup file to a device to move to the new computer
- Install the same version of DL Windows
- Now copy the backup to the same folder as the old computer



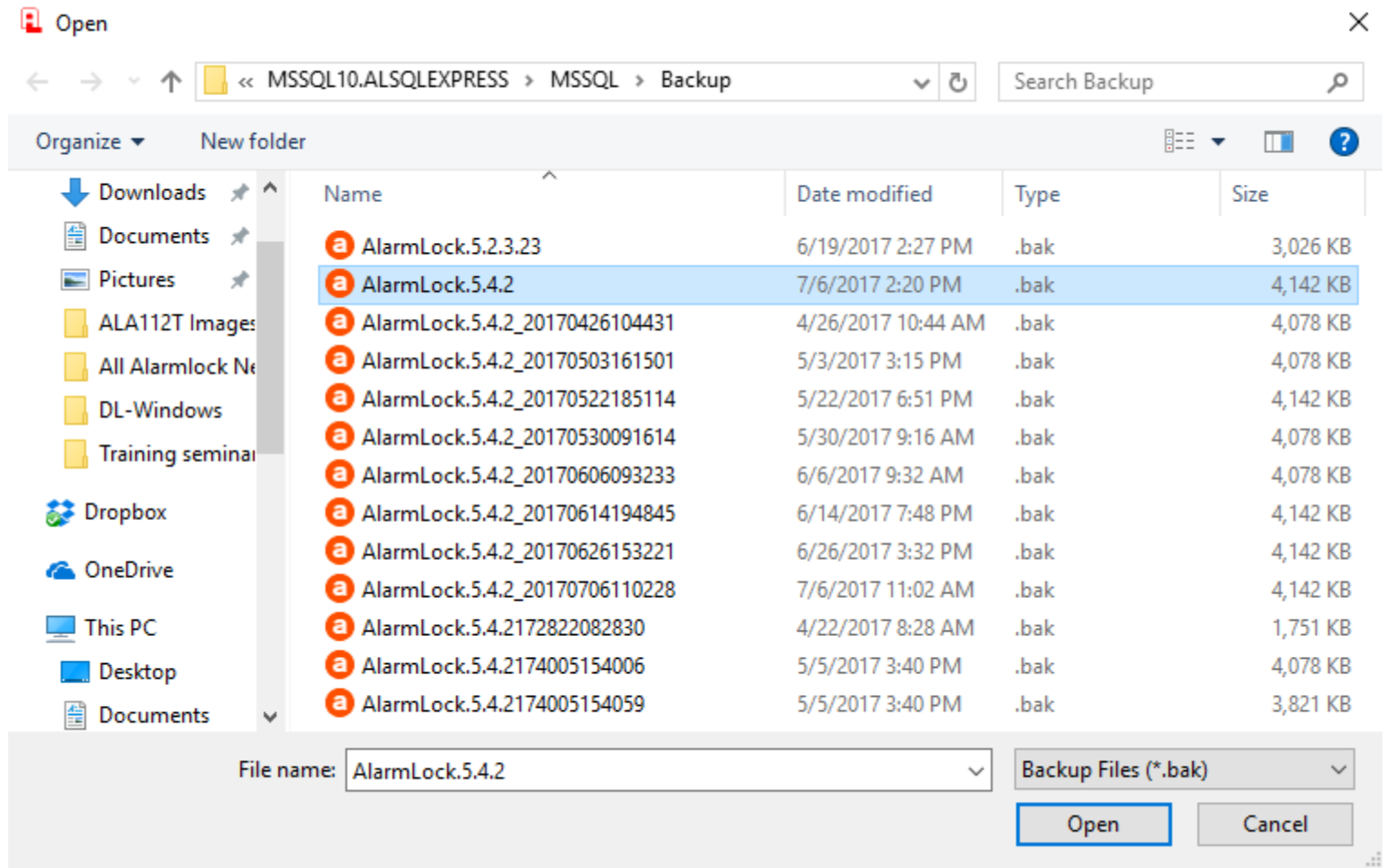
5.1.1 and newer

- Click on TOOLS and then Restore Database



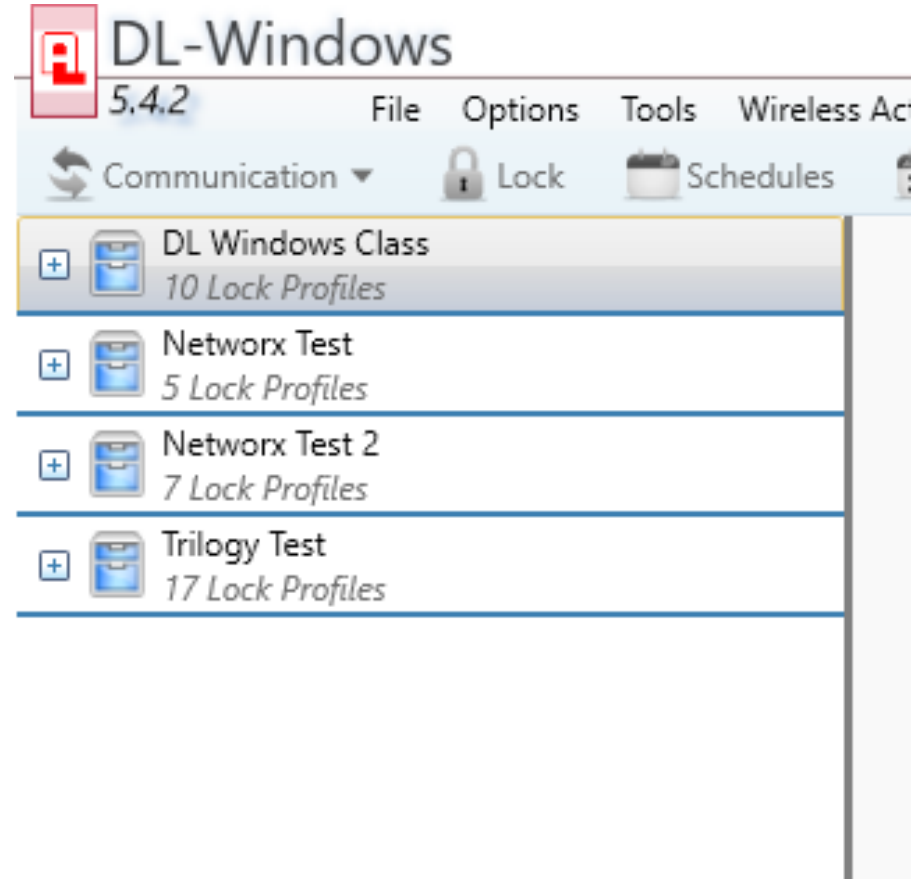
5.1.1 and newer

- Click on the backup file that you placed in the folder then click OPEN.



5.1.1 and newer

- Your accounts have been added into the new computer.



DL Windows software migration

Andy Phelps, CRL

Alarm Lock National Training Manager

aphelps@alarmlock.com