



ALARM LOCK

345 Bayview Avenue, Amityville, New York 11701

For Sales and Repairs 1-800-ALA-LOCK

For Technical Service 1-800-645-9440

or visit us at <http://tech.napcosecurity.com/>

(Note: Technical Service is for security professionals only)
Publicly traded on NASDAQ Symbol: NSSC

© ALARM LOCK 2019



IMPORTANT! - Before Installing DL-Windows V5.5.3 Please Read This

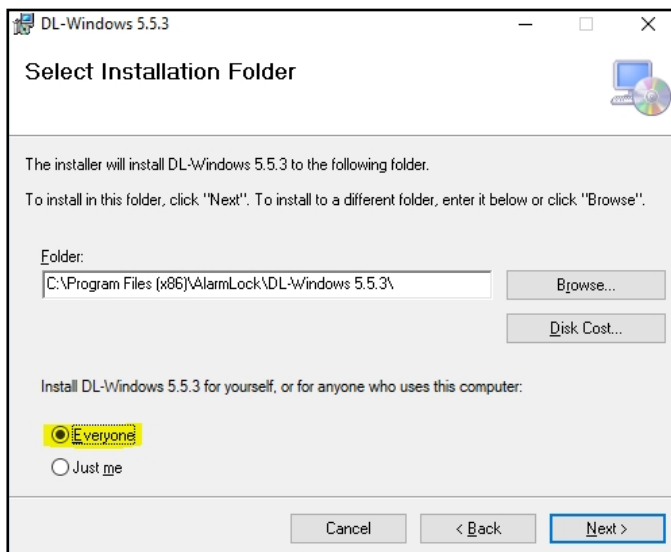
WI2330ALF 7/19

DL-Windows version 5.5.3, REQUIRES **Microsoft® SQL Server® 2012 Express!** Follow either the section "**For New Installations Only**" or the section "**For Existing/Upgrade Installations Only**".

For New Installations Only

If you are performing a BRAND NEW installation of DL-Windows 5.5.3, with no pre-existing versions in your computer, follow the steps in this section ONLY (DO NOT perform any of the steps in the section "**For Existing/Upgrade Installations Only**", below).

1. On the installation CD (or inside the WinZip file that was downloaded from the Alarm Lock technical Library website), right-click the file named "**DL-Windows Server Installer**" and select **Run as Administrator**.
2. As shown in the following image, when prompted "Install DL-Windows 5.5.3 for yourself, or for anyone who uses this computer", select **Everyone**, then click **Next** to proceed through the installation prompts.



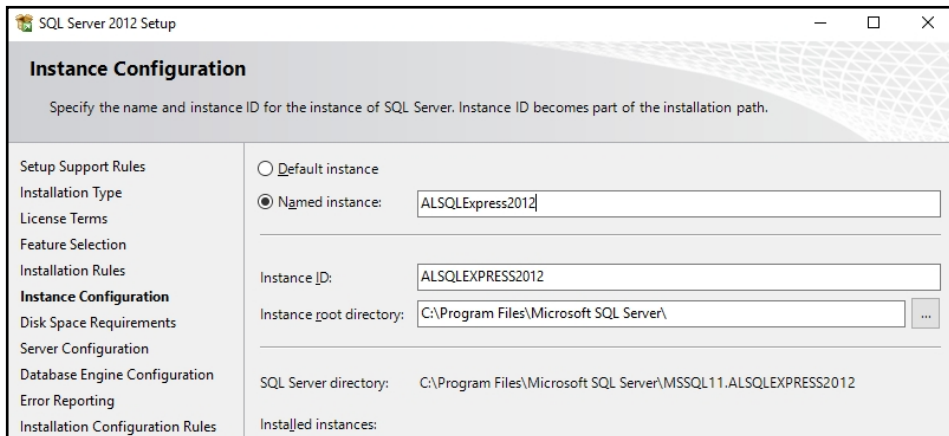
The installation process will install the **Microsoft® SQL Server® 2012 Express** database and the DL-Windows V5.5.3 computer software application. No further steps are needed. When the installation process ends, you can launch DL-Windows V5.5.3 and log in for use. **Note:** The "**DL-Windows Workstation Installer**" selection only installs the DL-Windows V5.5.3 computer software application, and is intended to be used only when you already have an instance of **Microsoft® SQL Server® 2012 Express** previously installed in your computer, or when you are connecting to a **Microsoft® SQL Server® 2012 Express** database over a network.

For Existing/Upgrade Installations Only

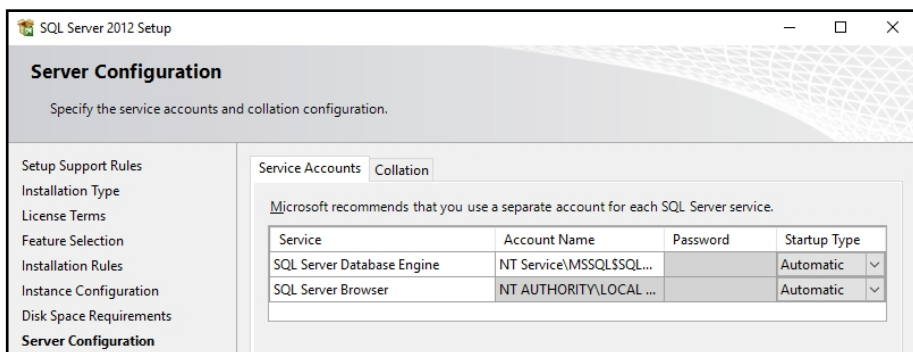
The steps in this section below are ONLY to be used if you ALREADY have an existing DL-Windows V5.X.X installed in your computer. Do NOT perform the steps below if you are installing DL-Windows for the first time (i.e. a BRAND NEW installation). For first time installations of DL-Windows, follow the steps in the section "**For New Installations Only**", above).

1. Run your existing DL-Windows V5.X.X software and back up the existing database (click **Tools > Backup Database**).
2. Manually install **Microsoft® SQL Server® 2012 Express** as follows:
 - On the installation CD (or inside the WinZip file that was downloaded from the Alarm Lock technical Library website), open the folder named **SqlExpress2012**. The next selection depends upon your Windows operating system: For 64-bit operating systems, right-click the file named "**SQLEXP_x64_ENU.EXE**" and select "**Run as Administrator**"; for 32-bit operating systems, right-click the file named "**SQLEXP32_x86_ENU.EXE**" and select "**Run as Administrator**"

- For the SQL **Installation Type**, select "**New SQL Server Standalone Installation**"
- Select "**Perform a new installation of SQL Server 2012**"
- Accept the License Terms and click **NEXT**
- **SELECT ALL** instance features, then click **NEXT**
- In the **Instance Configuration** screen (shown below), use the SQL **Named instance** "**ALSQLExpress2012**" and the **Instance ID** "**ALSQLEXPRESS2012**" (ensure the **Named instance** and the **Instance ID** both match). Click **Next** to continue.

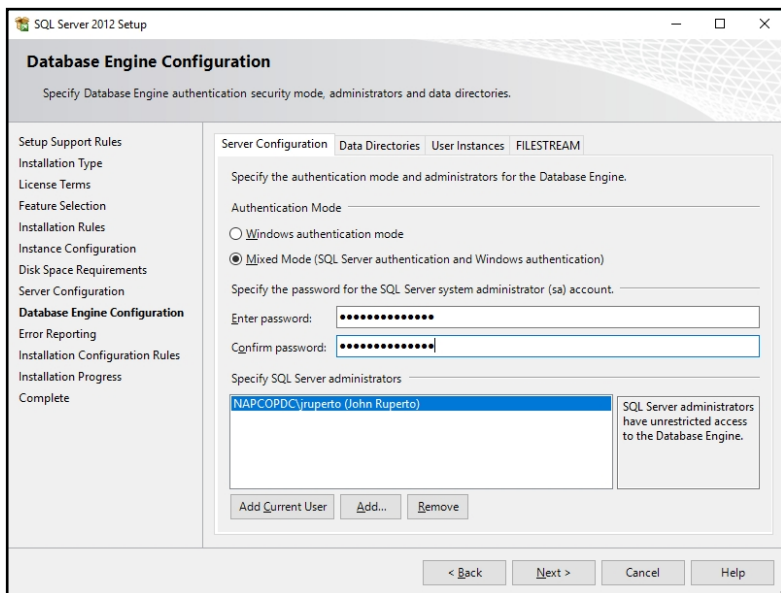


- Click **NEXT** in the **Server Configuration** screen (shown below)



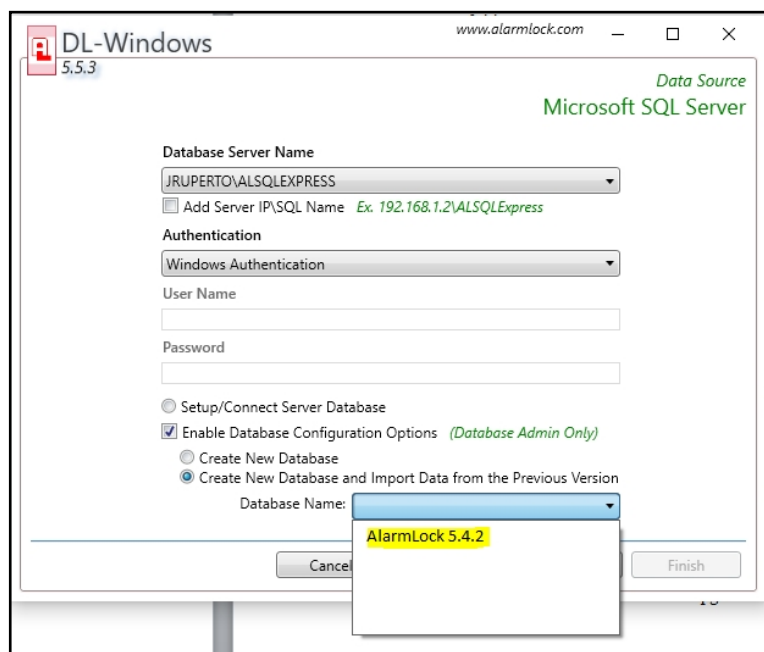
- In the **Database Engine Configuration** screen (shown below), we recommend you select **Mixed Mode** and enter an SQL Server system administrator (sa) account password. This will allow future access to the database as an Administrator if your Windows User login does not permit local access. You can also specify additional SQL Server administrators by adding them manually in the section "**Specify SQL Server administrators**" section. Click **Next** to continue.

Note: Physically retain and store the system administrator password in a secure location, or use Alarm Lock's default Password **alarmlock@2012** (all lowercase).



- Click **Next** until the installation process is complete.

3. Uninstall DL-Windows (5.X.X) using **Programs and Features > Uninstall or change a program** in Microsoft Windows.
4. Install DL-Windows V5.5.3 using a **"Workstation"** installation: On the installation CD (or inside the WinZip file that was downloaded from the Alarm Lock technical Library website), right-click the file named **"DL-Windows Workstation Installer"** and select **Run as Administrator**. Proceed with the prompts to install.
5. After the Workstation installation process ends, run the **Database Configuration** utility to import the previous database version into version 5.5.3 (the **Database Configuration** utility is located in **Start > All Programs > DL-Windows 5 > Database Configuration**). **Note:** For this step, DL-Windows will still be using the previous version of SQL Server, i.e. version 2008.
6. In the screen that appears (shown below), perform the following:
 - Check the **"Enable Database Configuration Options"** checkbox
 - Select **"Create New Database and Import Data from the Previous Version"**
 - In the **"Database Name"** pull-down, select your older database (likely your previous version)
 - Click **"Next"**, when prompted. Continue to click **"Yes"**, then click **"Next"**.
 - **Note:** DO NOT check **"Use DL-Windows in Server Mode"**.
 - Click **"Finish"**.



7. After successfully importing your database from the previous version, run DL-Windows V5.5.3 and click **Tools > Backup Database**. When complete, exit DL-Windows V5.5.3.
8. Connect to the new SQL Server 2012 database and restore the backup file, as follows:
 - Run the **Database Configuration** utility (located in **Start > All Programs > DL-Windows 5 > Database Configuration**) and select the new database **"ALSQLEXPRESS2012"** in the **"Database Server Name"** pull-down.
 - Check the **Enable Database Configuration Options** checkbox and select **Create New Database**. Click **Next**.
 - On the screen that follows, click **YES** if prompted to overwrite (then **NEXT**). **Note:** DO NOT check **"Use DL-Windows in Server Mode"**
 - On the final screen that appears, click **Finish**, and a new **"blank" SQL Server® 2012 Express** database will have been created.
9. Migrate the older "Backup File" created in Step 7 to the new **SQL Server® 2012 Express** Backup directory:
 - Open the folder named "Backup" located in the 2008 SQL Express main folder:

C:\Program Files\Microsoft SQL Server\MSSQL10.ALSQLEXPRESS\MSSQL\Backup

- Copy the Alarm Lock V5.5.3 backup file.
- Paste the Alarm Lock V5.5.3 backup file into the newly created **SQL Server® 2012 Express** "Backup" folder:

C:\Program Files\Microsoft SQL Server\MSSQL11.ALSQLEXPRESS2012\MSSQL\Backup

- Run DL-Windows V5.5.3 software
- Click **Tools > Restore Database**
- Select the backup file that includes the name "V5.5.3" and click **Open**.

All Finished! The database is now both restored and upgraded to DL-Windows V5.5.3.