



ALARM LOCK

345 Bayview Avenue
Amityville, New York 11701
For Sales and Repairs 1-800-ALA-LOCK
For Technical Service 1-800-645-9440
Publicly traded on NASDAQ Symbol: NSSC

© ALARM LOCK 2005

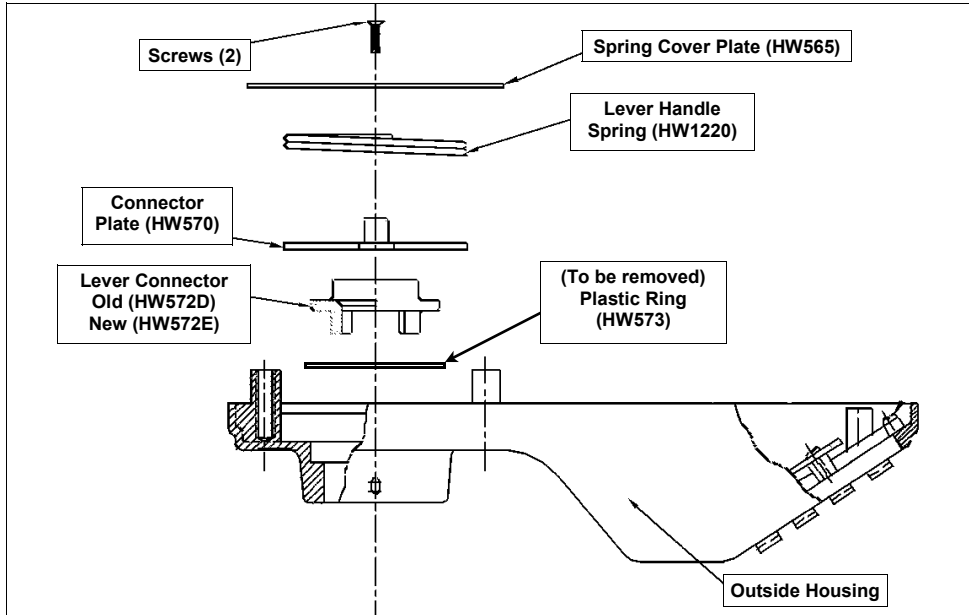
ADDENDUM

LEVER CONNECTOR REPLACEMENT KIT

W11454 8/05

Use this replacement kit with only those cylindrical locks that meet **all** three of the following requirements:

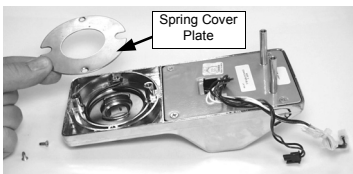
- Locks manufactured before August 20, 2005;
- Locks that contain a Plastic Ring (HW573--see exploded diagram below);
- Locks that exhibit a lever binding problem when installed on doors under 1 3/4" in thickness.



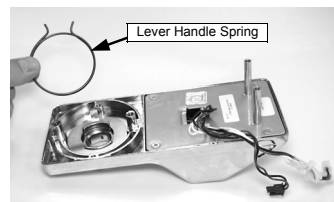
APPLICABLE MODELS

DL2700
DL3000
PDL3000
DL4100
PDL4100
DL2800

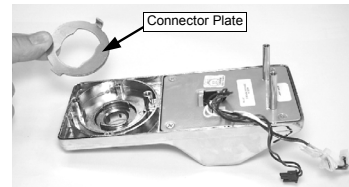
HOW TO REPLACE THE LEVER CONNECTOR (NEW PART HW572E)



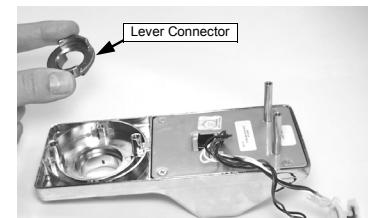
1. With housing removed from door, unscrew two screws and remove the Spring Cover Plate (HW565) as shown.



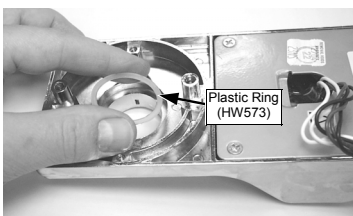
2. Remove the Lever Handle Spring (HW1220) and set aside.



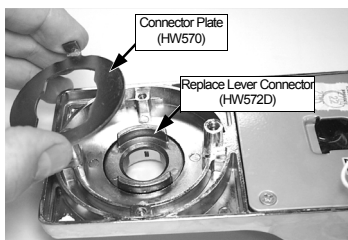
3. Remove Connector Plate (HW570).



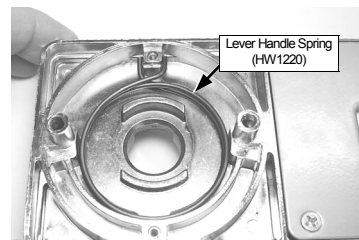
4. Remove Lever Connector (HW572D) and discard.



5. Remove and discard Plastic Ring (HW573).



6. Install new *clear plating* Lever Connector (HW572E) in place of old Connector (HW572D). Re-install Connector Plate (HW570).



7. Install Lever Handle Spring (HW1220).



8. Replace the Spring Cover Plate (HW565) and secure with two screws.