



**ALARM LOCK**

345 Bayview Avenue  
Amityville, New York 11701  
For Sales and Repairs 1-800-ALA-LOCK  
For Technical Service 1-800-645-9440  
Publicly traded on NASDAQ Symbol: NSSC

© ALARM LOCK 2005

# SE-DTMIII Conversion Kit MICROPROCESSOR UPGRADE

## INSTALLATION & SETUP INSTRUCTIONS

WI1428A 10/05

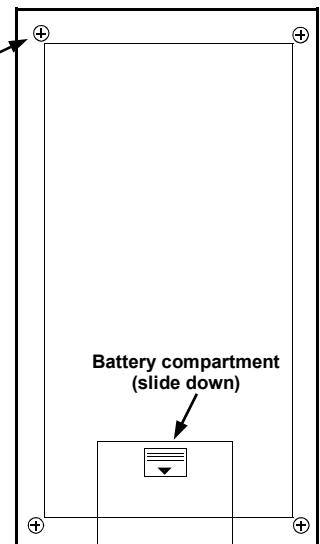
Upgrading DL-Windows software to version 3.5.3 or higher requires that the firmware in the AL-DTM-II module be upgraded to to version III firmware. To upgrade your AL-DTM-II to version III, replace the microprocessor chip of the AL-DTM-II with an upgrade chip (part number **SE-DTMIII**) as shown in the instructions below.

The AL-DTM-III can hold up to 200 PDL3000 / PDL3500 type locks, or up to 1000 DL3000 / DL2800 type locks. **Note:** If you are unsure about the version of DL-Windows you are running, the version number can be found on the DL-Windows Help menu in the "About" screen.

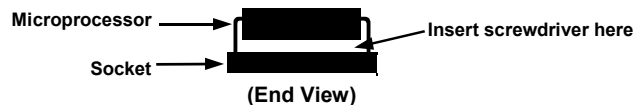
### UPGRADING THE AL-DTM-II TO VERSION III

1. Open battery compartment and disconnect battery.
2. Remove (4) Phillips head screws from back of case. (**Note:** The two longer screws secure the top of the unit and the two shorter screws secure the bottom).
3. Remove rear cover. Take care not to pull on the attached battery leads or lose the four (4) plastic spacers which are located on each corner of the circuit board.
4. Locate Microprocessor IC5. This is the only chip placed in a socket, and is the largest on the PC board (located near the center).
5. Insert a small flat-bladed screwdriver under each end of microprocessor and lift with a gentle twisting motion.

Phillips head screws (4 places)

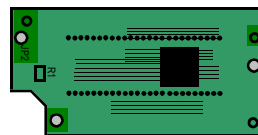


Battery compartment (slide down)



6. With the new adapter board in hand, align the pins with the socket. The "JP2" connector holes and resistor "R1" should be on the left side of the board when aligning the pins with the socket (see figure below). Press adapter board into the socket, taking care not to bend any interconnect pins. Be sure all pins are fully inserted into the socket.

"JP2" and "R1" on left side

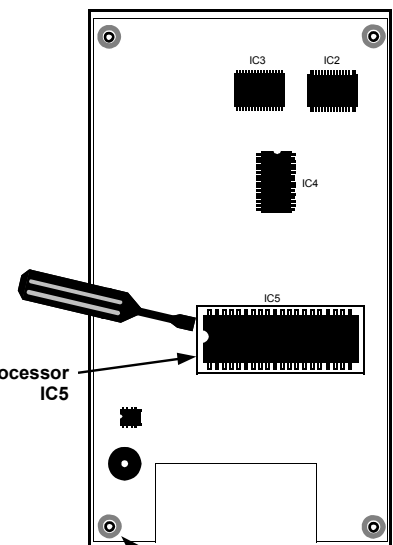


New Adapter Board

7. Insure that each of the four (4) plastic spacers is in its proper position.
8. Place rear cover on DTM.
9. Secure cover with the (4) screws (the 2 longer screws secure the top of the unit and the 2 shorter ones secure the bottom).
10. Re-connect battery and close the battery compartment.
11. The software must now be configured for AL-DTM-III operation; follow the setup procedure on the next page.

Microprocessor IC5

Spacers (4 places)



## AL-DTM OVERVIEW

Data Transfer Modules allow the transfer of lock programs and other data between DL-Windows software and Alarm Lock locking devices. The improved DTM-III allows for more locks to be stored per account, both within DL-Windows and within the DTM-III itself. These instructions will allow you to configure for the improved DTM-III operation.

DTM's that start up with the message "Alarm Lock DTM-II-III, V1.XX" will operate in both the DTM-II and DTM-III modes. Units configured to operate in DTM-III mode will display "DTM-III" when prompting users to enter lock mode. The DTM-III mode is required for DL-Windows 3.5.3 operation, and likewise DL-Windows 3.5.3 is required for use with DTM-III mode.

**Note:** If you are unsure about your version of DL-Windows, version numbers can be found in the DL-Windows **Help, About** screen. Products shipped as DTM-III have been factory configured for DTM-III mode *ON* and Door Select Mode *OFF*.

## AL-DTM-III SETUP

Configure the internal DTM software for DTM-III operation:

1. From the *Power On* or *PC Comm.* mode, press and **HOLD** both the left and green buttons on the DTM. After several messages appear, *release the buttons* when the display reads:

ENTERING CONFIG/TEST MODE
------------------------------

← Release the buttons when displayed

2. When the display reads "CONFIG. LANGUAGE", the DTM has entered its configuration and self-test mode.
3. Press and release the green button once and the display will read "CONFIG FOR DTM-III MODE".
4. Press and **HOLD** the green button until the DTM beeps--release the button and the display reads:

DTM-III MODE=OFF ON OFF EXIT
---------------------------------

The top line of the display indicates that DTM-III mode is currently off; the bottom line corresponds to the three buttons on the DTM.

Therefore, to activate DTM-III operation, press the left button. The top line of the display will now read:

DTM-III MODE=ON ON OFF EXIT
--------------------------------

**(Note:** If using DL-Windows versions earlier than 3.5.3, you must press the center button to keep DTM-III operation off--thus retaining DTM-II operation).

5. Press the green button to exit this sequence. "TASK ENDING!" will appear briefly. The DTM will proceed directly to "Door Selection Mode" as described in the next section.

## ENABLE DOOR SELECTION MODE

Door Selection Mode is only needed if performing initial lock programming using DL-Windows 3.5.3. See the DL-Windows User's Guide OI237 for more information about Door Selection Mode.

1. When configuring to allow Door Select Mode, the display will switch between the following:

CONFIG. DOOR SELECT MODE	Hold Button=Run, Press=Next Test
-----------------------------	-------------------------------------

2

Press and **HOLD** the green button until the DTM beeps--release the button and the DTM will display:

DOOR SELECT= OFF ON OFF EXIT
---------------------------------

The top line of the display indicates that Door Select mode is currently off; the bottom line corresponds to the three buttons on the DTM.

Therefore, if using DL-Windows Version 3.5.3 or later and you wish to use the AL-DTM-III to provide *initial* programming to *existing* locks, press the left button (selecting "ON") to enable DOOR SELECT Mode. The top line of the display will now read:

DOOR SELECT= ON ON OFF EXIT
--------------------------------

**(Note:** You may press the center button to keep Door Select mode off, provided all system locks are already enrolled in the DL-Windows 3.5.3 program. See the DL-Windows User Guide for details regarding Door Select mode).

3. Press and release the green button (again and again) until the DTM Displays:

Sleep Then Power Down.
---------------------------

4. Press and hold the green button until the DTM Beeps. The DTM will perform a brief power control test (TEST RUNNING!) and then shut down within 5 seconds.

## DOOR SELECTION OVERVIEW

### Door Numbers and Lock ID's

**Prior to DL-Windows v3.5.3**, *Door Numbers* were used to ensure that each physical lock was correctly matched to its corresponding data when programmed. *Door Numbers* were programmable via the lock keypad via Function 59 (for locks without keypads, such as the PL3000, *Door Numbers* were selected either by a DL-Windows equipped PC or by the Door Select function of an AL-DTM-II. See W11280 for more information).

**With DL-Windows v3.5.3 or later**, the concept of a *Door Number* has been discontinued in favor of a new system of *LockID's*. With *LockID's*, changing the Door Number at the keypad via Function 59 is ignored by DL-Windows, and the **ONLY** way to ensure the correct physical locks are properly matched to their corresponding data is to either:

- use DL Windows v3.5.3 to program the locks, thus updating the locks with the new "LockID" system, --or--
- use an AL-DTM-III and its **Door Select Mode** to provide the full lock program (which includes the LockID).

**Note:** The DTM displays the word "Door" and not "LockID" when referring to door numbers. In the DTM, both words are equivalent.

## USING DOOR SELECT MODE

To use an AL-DTM-III to program locks *for the first time* using **Door Select Mode**, proceed as follows:

1. Power up the AL-DTM. Upon pressing the green power-up button, the DTM displays several messages, including the DTM ID and version number, a memory test, and its total memory status. Then a prompt for the **Operation Mode** will appear:

```
OPERATION MODE?  
SELECT      STD.
```

Press the left black button (below **Select**) to enable **Door Select Mode** in addition to the two other modes of operation (**PC Comm Mode** and **Lock Mode**). The following screen appears, indicating the DTM is now in **PC Communication Mode**:

```
PC COMM MODE  
. . . .
```

2. Download the lock data from the PC to the DTM

(the PC must be running DL-Windows 3.5.3 or later). This lock data will be the data intended to be sent to the locks. Refer to the DL-Windows manual OI237 for the full procedure.

3. Press the green button until the display reads as follows:

```
DOOR SELECT MODE  
YES          NO
```

Press the left button (below **YES**) to use the **Door Select Mode**. A "Test Running" message may briefly appear (and re-appear) in the display.

4. The first of the available door numbers will appear (as shown in the sample screen below). In the below example, the current door number (also named *LockID* in DL-Windows) is "8".

```
Current Door=008  
<BACK NEXT> SET
```

**Note:** If there are no available doors loaded in the DTM, the display will read "CLR", as shown in the following screen:

```
Current Door=CLR  
<BACK NEXT> SET
```

5. Scroll through the available door numbers (previously downloaded in step 2) by pressing the **BACK** and **NEXT** buttons.
6. When the desired door number is in the display, (6 in the example screen below) press the button below **SET** to select. The following will display.

```
Ready, Door =006  
GO          EXIT
```

7. Connect the DTM to the lock via the double-ended mini banana plug. Press the left button (**GO**) and the following screen will display, prompting you to enter the Function 299 download code (or for PL "keypadless" locks, to present the Function 2 card):

```
DTM-III: Plug in  
then enter code
```

```
No lock detected  
10/10/06 03:45PM
```

Enter the lock's Function 299 code (or for PL locks, present the Function 2 card) to initiate the data transfer. The DTM will perform a quick test of the lock as the following screens appear

Door \*\*\*\*\*  
Detected

Re-enter 299 code  
to continue

Re-enter the Function 299 code a second time, (or re-present Function Card 2 for PL series locks) and the following screen appears during download:

Door 08, Sending  
PGM Packet 005

(Packet numbers will increase until all packets have been transferred to the lock). The Lock will continue to beep while in communication with the AL-DTM.

8. At the end of the transfer process, the lock will sound a series of beeps. You can now disconnect the mini banana plug. The following will display:

Com. Complete  
10/10/06 03:47PM

9. The DTM will then provide a memory status and proceed to the following Lock Mode screen:

LOCK MODE  
YES NO

To start again, press the right button (below **NO**) to exit **Lock Mode** and then press the left button (below **YES**) to use **Door Select Mode**.

DOOR SELECT MODE  
YES NO

Continue again at step 3, above.

**Note:** The AL-DTM will only allow the selection of a "door number" for which it has valid data currently programmed (step 2, above, must be performed).

**Warning:** The "door number" (LockID) selected will override the number (if any) programmed in the lock. Care must be taken to ensure that the correct data is being transferred to the correct lock.

## ALARM LOCK LIMITED WARRANTY

ALARM LOCK SECURITY SYSTEMS, INC. (ALARM LOCK) warrants its products to be free from manufacturing defects in materials and workmanship for 24 months following the date of manufacture. ALARM LOCK will, within said period, at its option, repair or replace any product failing to operate correctly without charge to the original purchaser or user.

This warranty shall not apply to any equipment, or any part thereof, which has been repaired by others, improperly installed, improperly used, abused, altered, damaged, subjected to acts of God, or on which any serial numbers have been altered, defaced or removed. Seller will not be responsible for any dismantling or reinstallation charges.

THERE ARE NO WARRANTIES, EXPRESS OR IMPLIED, WHICH EXTEND BEYOND THE DESCRIPTION ON THE FACE HEREOF. THERE IS NO EXPRESS OR IMPLIED WARRANTY OF MERCHANTABILITY OR A WARRANTY OF FITNESS FOR A PARTICULAR PURPOSE. ADDITIONALLY, THIS WARRANTY IS IN LIEU OF ALL OTHER OBLIGATIONS OR LIABILITIES ON THE PART OF ALARM LOCK.

Any action for breach of warranty, including but not limited to any implied warranty of merchantability, must be brought within the six months following the end of the warranty period.

IN NO CASE SHALL ALARM LOCK BE LIABLE TO ANYONE FOR ANY CONSEQUENTIAL OR INCIDENTAL DAMAGES FOR BREACH OF THIS OR ANY OTHER WARRANTY, EXPRESS OR IMPLIED, EVEN IF THE LOSS OR DAMAGE IS CAUSED BY THE SELLER'S OWN NEGLIGENCE OR FAULT.

In case of defect, contact the security professional who installed and maintains your security system. In order to exercise the warranty, the product must be returned by the security professional, shipping costs prepaid and insured to ALARM LOCK. After repair or replacement, ALARM LOCK assumes the cost of returning products under warranty. ALARM LOCK shall have no obligation under this warranty, or otherwise, if the product has been repaired by others, improperly installed, improperly used, abused, altered, damaged, subjected to accident, nuisance, flood, fire or acts of God, or on which any serial numbers have been altered, defaced or removed. ALARM LOCK will not be responsible for any dismantling, reassembly or reinstallation charges.

This warranty contains the entire warranty. It is the sole warranty and any prior agreements or representations, whether oral or written, are either merged herein or are expressly canceled. ALARM LOCK neither assumes,

nor authorizes any other person purporting to act on its behalf to modify, to change, or to assume for it, any other warranty or liability concerning its products.

In no event shall ALARM LOCK be liable for an amount in excess of ALARM LOCK's original selling price of the product, for any loss or damage, whether direct, indirect, incidental, consequential, or otherwise arising out of any failure of the product. Seller's warranty, as hereinabove set forth, shall not be enlarged, diminished or affected by and no obligation or liability shall arise or grow out of Seller's rendering of technical advice or service in connection with Buyer's order of the goods furnished hereunder.

ALARM LOCK RECOMMENDS THAT THE ENTIRE SYSTEM BE COMPLETELY TESTED WEEKLY.

Warning: Despite frequent testing, and due to, but not limited to, any or all of the following; criminal tampering, electrical or communications disruption, it is possible for the system to fail to perform as expected. ALARM LOCK does not represent that the product/system may not be compromised or circumvented; or that the product or system will prevent any personal injury or property loss by burglary, robbery, fire or otherwise; nor that the product or system will in all cases provide adequate warning or protection. A properly installed and maintained alarm may only reduce risk of burglary, robbery, fire or otherwise but it is not insurance or a guarantee that these events will not occur. CONSEQUENTLY, SELLER SHALL HAVE NO LIABILITY FOR ANY PERSONAL INJURY, PROPERTY DAMAGE, OR OTHER LOSS BASED ON A CLAIM THE PRODUCT FAILED TO GIVE WARNING. Therefore, the installer should in turn advise the consumer to take any and all precautions for his or her safety including, but not limited to, fleeing the premises and calling police or fire department, in order to mitigate the possibilities of harm and/or damage.

ALARM LOCK is not an insurer of either the property or safety of the user's family or employees, and limits its liability for any loss or damage including incidental or consequential damages to ALARM LOCK's original selling price of the product regardless of the cause of such loss or damage.

Some states do not allow limitations on how long an implied warranty lasts or do not allow the exclusion or limitation of incidental or consequential damages, or differentiate in their treatment of limitations of liability for ordinary or gross negligence, so the above limitations or exclusions may not apply to you. This Warranty gives you specific legal rights and you may also have other rights which vary from state to state.