



ALARM LOCK

345 Bayview Avenue, Amityville, New York, U.S.A. 11701

For Sales and Repairs 1-800-ALA-LOCK • For Technical Service 1-800-645-9440

Fax: 631-789-3383 • info@alarmlock.com

Note: Technical Service is for security professionals only

ALARM LOCK Tech Support

TECH TIP










Date: Friday, February 15, 2019

F.A.Q. Subject: Enabling a User Code to Toggle Passage Mode

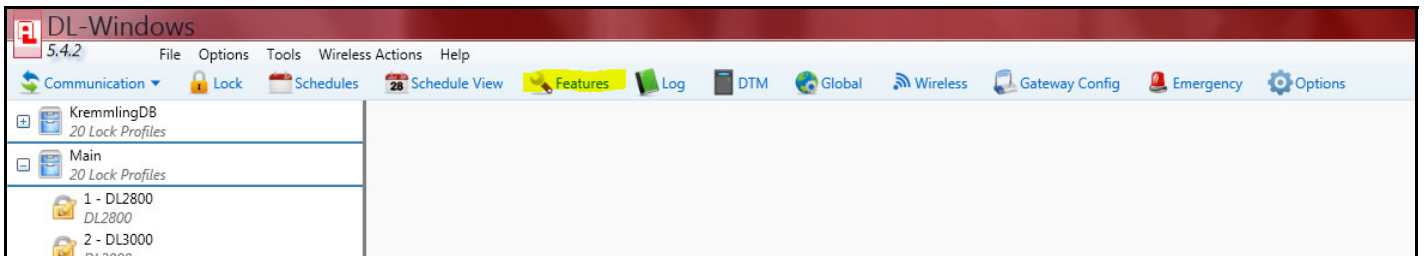
Models: Trilogy T3 Locks (Excluding DL2800, DL3000)

Keypad Programming

To enable "Group 2 Toggles Passage Mode", place the lock into Passage Mode by pressing the Master Code followed by the  key after the green light turns off. Once in program mode, press      . In addition, be sure to add a User Code to Group 2 (users 101-150).

DL-Windows Programming

In DL-Windows, click the Lock Profile, then click **Features**.



In the **Features** screen (shown below), check the **Group 2 Toggles Passage Mode** checkbox.



ALARM LOCK

345 Bayview Avenue, Amityville, New York, U.S.A. 11701

For Sales and Repairs 1-800-ALA-LOCK • For Technical Service 1-800-645-9440

Fax: 631-789-3383 • info@alarmlock.com

Note: Technical Service is for security professionals only

Options Relay Remote

Door Actions

Lock ID 5

Pass Time In Seconds 3

Entry Delay In Seconds 0

Lockout # of Attempts 6

Lockout Time In Seconds 20

Group Entry Modes

Group 2 Toggles Passage Mode

Group 2 Enable and 3 Disables Passage Mode

One Time Entry for Group 3 Users

Sounder/Star Key

Star Key as Enter Key

Disable Sounder

Enable Star Key as Doorbell

Enable Entry Sounder

Daylight Savings

Custom Daylight Savings Time

Custom Daylight Savings Time

Close

As with keypad programming, you will also need to add a User code to Group 2 using the Global Users screen (shown below). First highlight the user and click **Assign Groups**.

Ken Callihan 3298

Comments

Search

Name

Type Search Text Here

Hide Pins Assign Groups Assign Levels Double Sided Access

Finally, at the bottom of the **Group Assignment** dialog (shown below), add a check to the **Group 2** checkbox, then click **Save**.

Group Assignment: Ken Callihan [Kremming...]

12 - Admin. Hall ea... 13 - Pharmacy

GP1 GP2 GP3 GP4 GP1 GP2 GP3 GP4

16 - Mail Room 17 - PT

GP1 GP2 GP3 GP4 GP1 GP2 GP3 GP4

18 - Main Door

GP1 GP2 GP3 GP4

Add/Remove

Group 1 Group 2 Group 3 Group 4

Note: If the user is unassigned from the lock, its group association will be removed.

Cancel Save