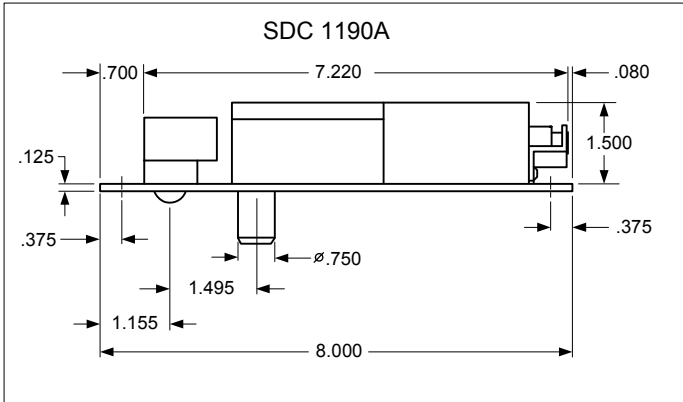
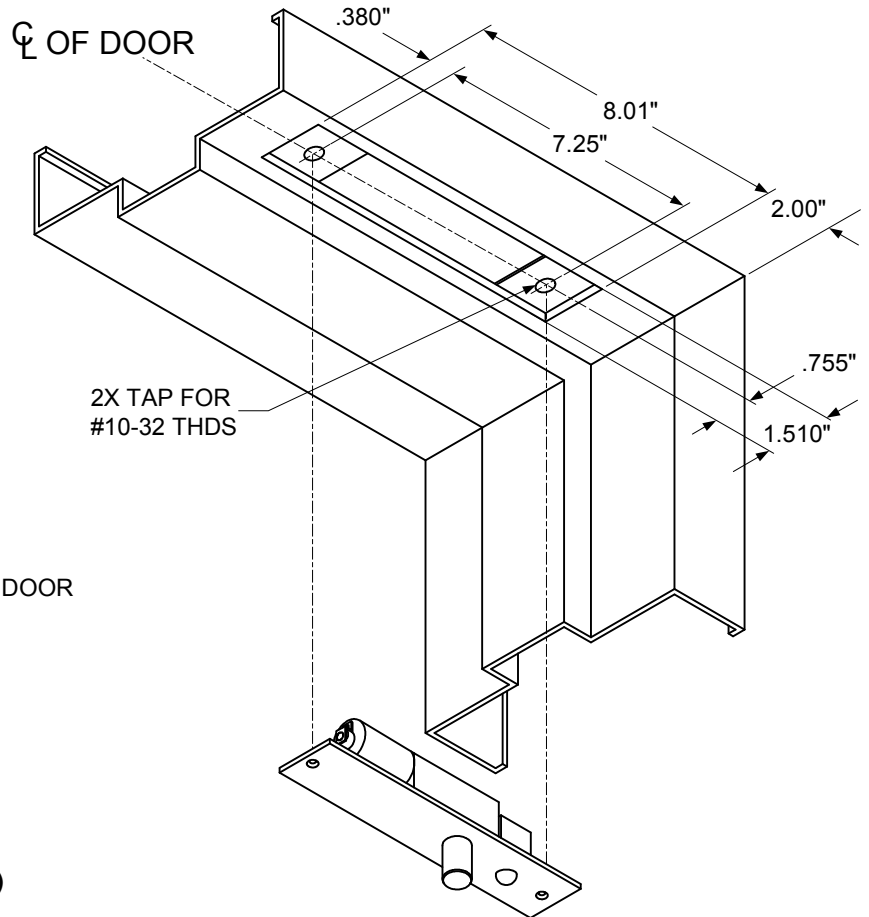
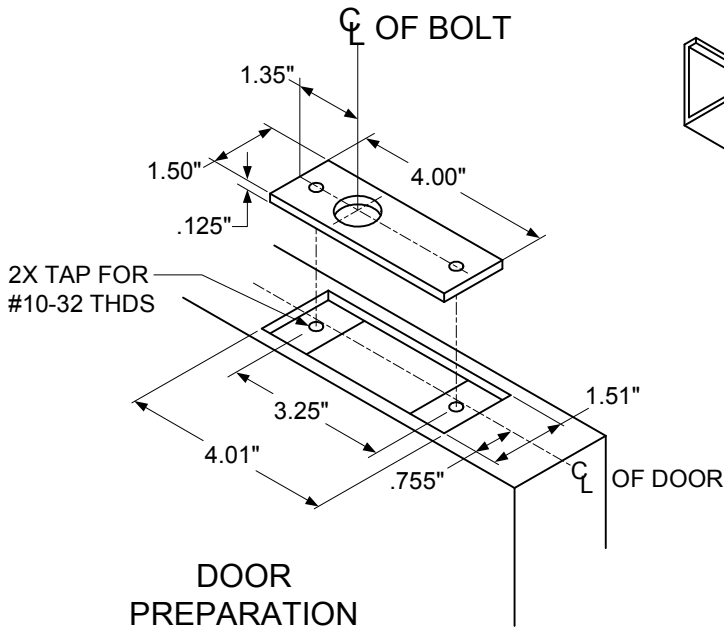


## TEMPLATE-1190A ELECTRIC BOLT LOCK



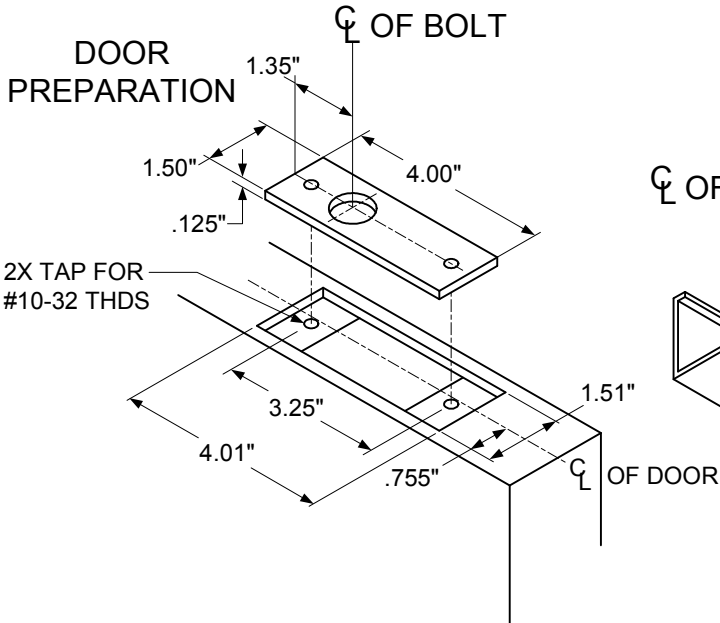
**NOTE: TEMPLATE DIMENSIONS ARE SUBJECT TO CHANGE WITHOUT NOTICE.**



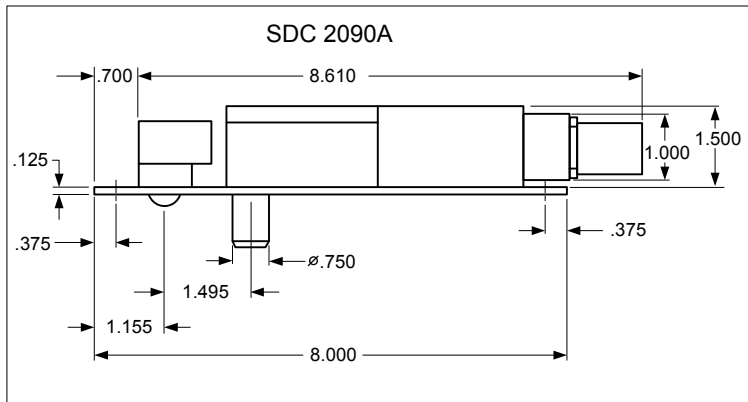
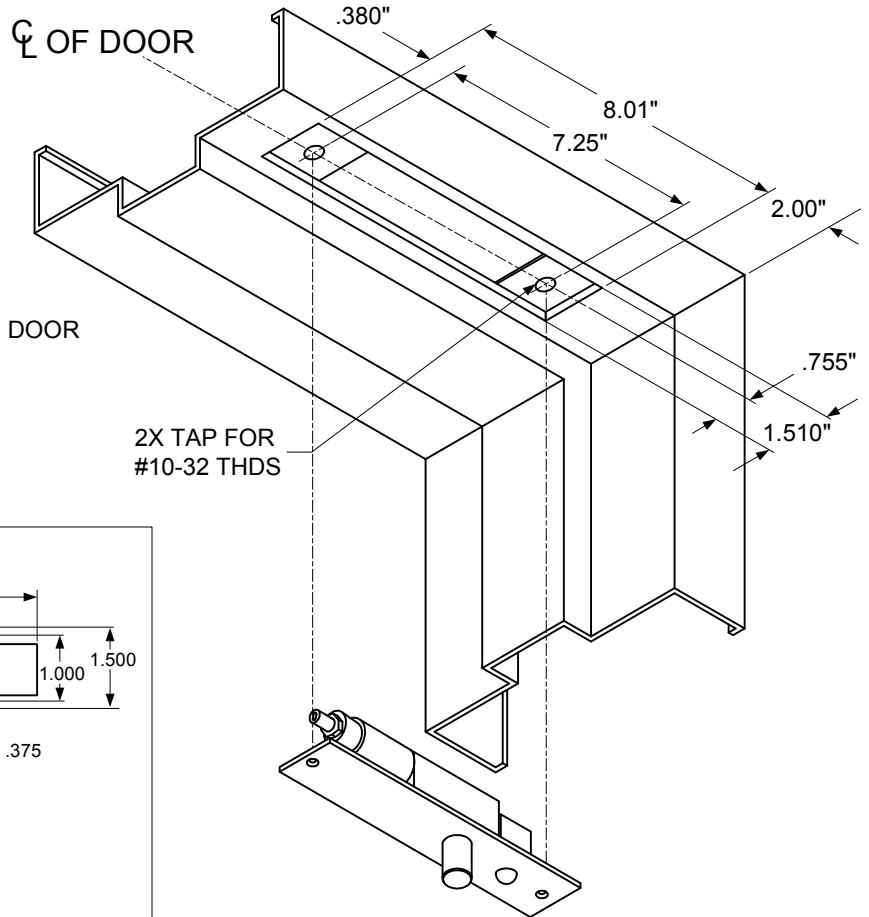
**TECHNICAL DATA (FOR STANDARD UNIT)**  
**FACE PLATE:** 8" x 1-1/2" x 1/8"  
**STRIKE:** 4" x 1-1/2" x 1/8"  
**ID REQUIREMENTS:** 8" x 1-1/2" x 1-1/2"  
**BOLT:** 3/4" DIA. SOLID STAINLESS STEEL  
**BOLT THROW:** 3/4", ROTATING

Any suggestions or comments to this instruction or product are welcome. Please contact us through our website or email engineer@sdsecurity.com

## TEMPLATE-2090A ELECTRIC BOLT LOCK

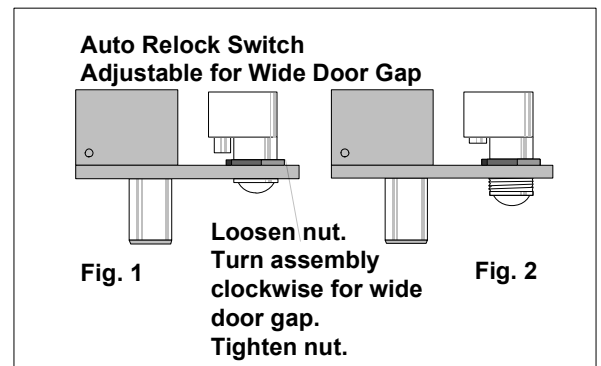


NOTE: TEMPLATE DIMENSIONS ARE SUBJECT TO CHANGE WITHOUT NOTICE.



### TECHNICAL DATA (FOR STANDARD UNIT)

**FACE PLATE:** 8" x 1-1/2" x 1/8"  
**STRIKE:** 4" x 1-1/2" x 1/8"  
**ID REQUIREMENTS:** 10" x 1-1/2" x 1-1/2"  
**FINISH:** US28 STANDARD (PLATED FINISHES OPTIONAL)  
**BOLT:** 3/4" DIA. SOLID STAINLESS STEEL  
**BOLT THROW:** 3/4", ROTATING  
**FAIL-SECURE** – UNLOCKED WHEN ENERGIZED  
**AUTO RELOCK SWITCH:** ADJUSTABLE BALL TYPE  
**SOLENOID:** CONTINUOUS DUTY  
**ELECTRICAL DATA:**  
 INSRUSH 60 WATTS – 2.5 AMPS MAX.  
 SEATED 12 WATTS - .5 AMP MAX. @ 24VDC  
 (SPECIFY VOLTAGE REQUIRED)  
**STATUS SENSORS:** BOLT AND DOOR POSITION (OPTIONAL)

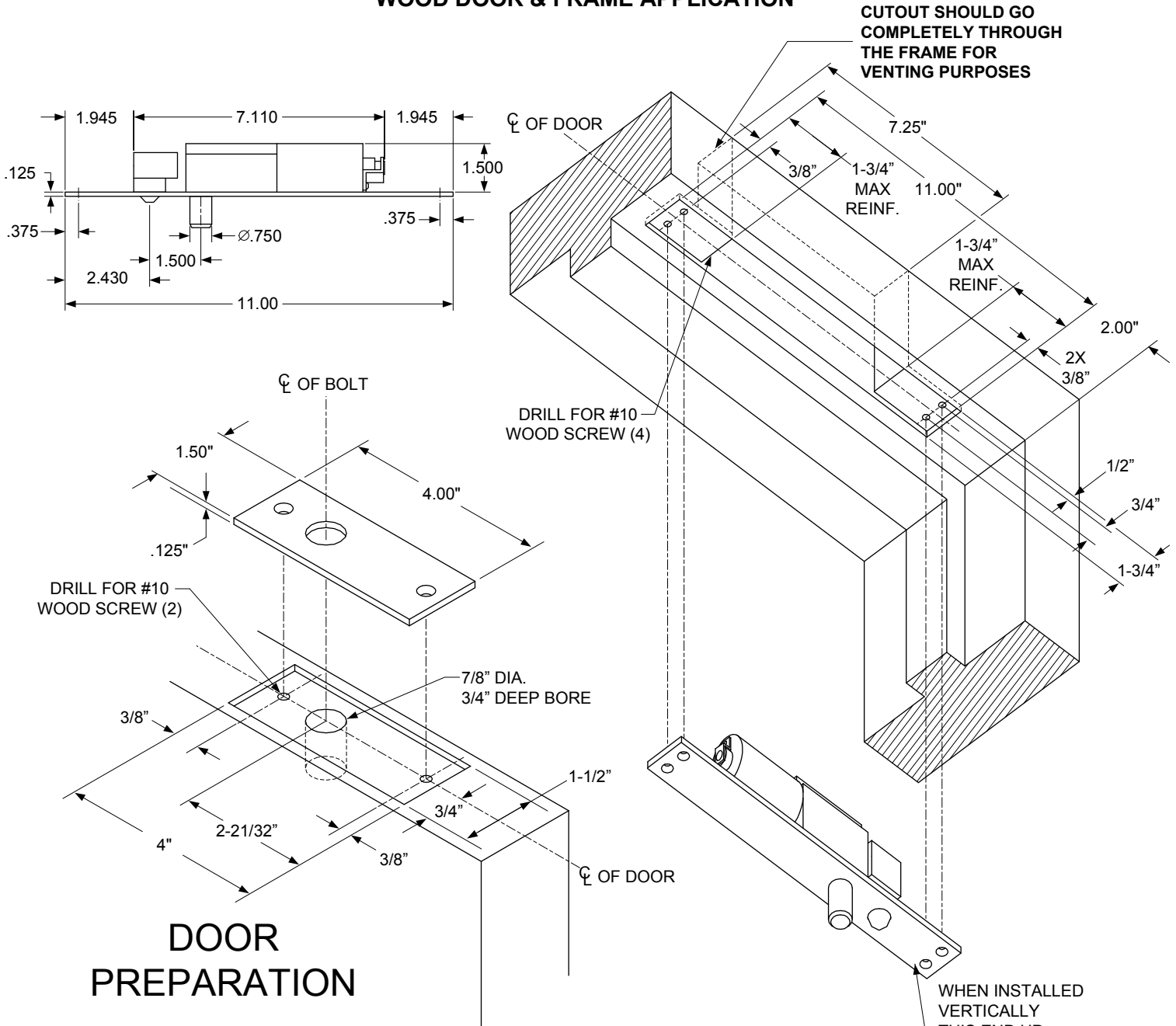


Any suggestions or comments to this instruction or product are welcome. Please contact us through our website or email engineer@sdsecurity.com

# SDC Security Door Controls

801 Avenida Acaso, Camarillo, Ca. 93012 • (805) 494-0622 •  
www.sdcsecurity.com • E-mail: service@sdsecurity.com

## TEMPLATE 1190AWD WOOD DOOR & FRAME APPLICATION



**NOTE: TEMPLATE DIMENSIONS ARE SUBJECT TO CHANGE WITHOUT NOTICE.**

### TECHNICAL DATA (FOR STANDARD UNIT)

**FACE PLATE:** 11" x 1-3/4" x 1/8"

**STRIKE:** 4" x 1-1/2" x 1/8"

**BOLT:** 3/4" DIA. SOLID STAINLESS STEEL

**BOLT THROW:** 3/4", ROTATING

**PR-1000 MODULE:** 3-3/4" x 1-1/4" x 1/2" Required when mounted in frame.

WHEN INSTALLED VERTICALLY THIS END UP. WHEN INSTALLED HORIZONTALLY, THIS END NEAR LOCK STILE.

Any suggestions or comments to this instruction or product are welcome. Please contact us through our website or email engineer@sdsecurity.com