



CM-30 & CM-30LED with DPDT Option Installation Instructions

Section 1: General Description

Camden CM-30 series illuminated Exit switches are designed to mount into a deep style single gang electrical box.

The large 2" square translucent button is easy to push. One or two momentary micro switch (es) is/are provided with Form C output, rated at 10 amps @ 125 VAC.

CM-30 models are supplied with a 12V AC/DC light bulb, which is accessed through the front or rear. CM-30LED models are supplied with a 12V DC long-life LED. If the bulb or LED model will be used with 24V DC, the supplied in-line resistor **must not** be removed.

Section 2: Mounting

Push the color-coded leads onto the switch terminals (if not already installed), as per the enclosed diagram. If illumination is not required, the Red & Black wires can be removed.

Connect the appropriate wires to your devices. Tuck wiring into box, and fasten switch plate using screws provided.

IMPORTANT

A lead with blue-coloured heat shrink (over in-line resistor) is supplied on LED model

A lead with black coloured heat shrink (over in-line resistor) is supplied on incandescent bulb model.

Leave resistor on for 24 Volts

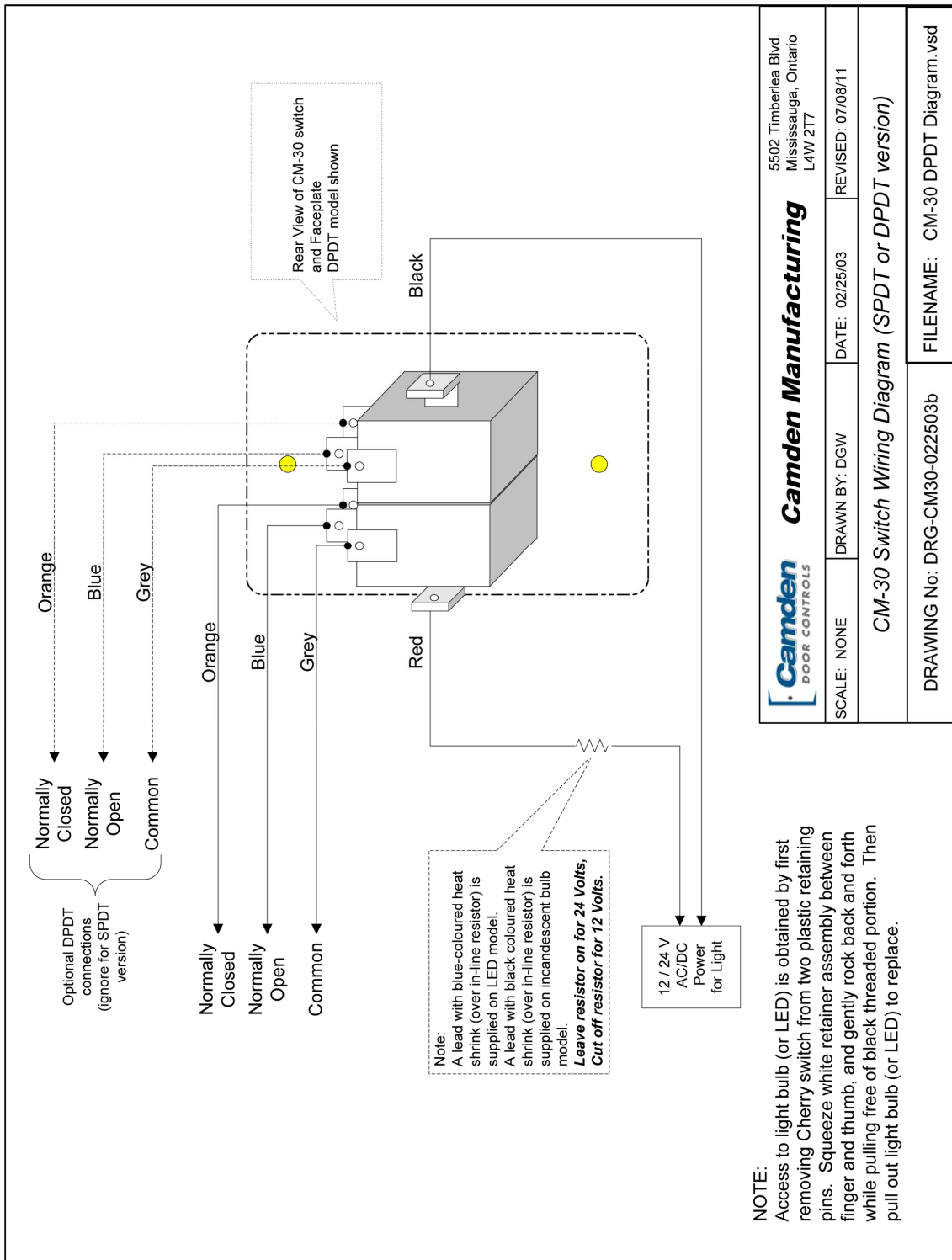
Cut off resistor for 12 Volts

Section 3: Technical Data

Models	CM-30E	CM-30H
Lens Color	Green Lens	Blue Lens
Legend	"Push to Exit"	"Wheelchair"
Size	4.5" H x 2.75" W x 2" D	
Mounting	2 x #6-32 machine screws	
Switching Rating	10 amps @ 125 VAC	
Standard Light Bulb	15,000 hours	
Voltage	12-28V AC/DC	
LED Models	100,000 hours	
Voltage	12 V or 24 V DC Only	
DPDT Option	2 x SPDT Switches installed	

Section 4: Warranty

Camden Door Controls guarantees the CM-30 to be free from manufacturing defects for 3 years from date of sale. If during the first 3 years the CM-30 fails to perform correctly, it may be returned to our factory where it will be repaired or replaced (at our discretion) without charge. There is no warranty for LED damage due to over voltage! Except as stated herein, Camden extends no warranties expressed or implied regarding function, performance or service.



NOTE:
Access to light bulb (or LED) is obtained by first removing Cherry switch from two plastic retaining pins. Squeeze white retainer assembly between finger and thumb, and gently rock back and forth while pulling free of black threaded portion. Then pull out light bulb (or LED) to replace.