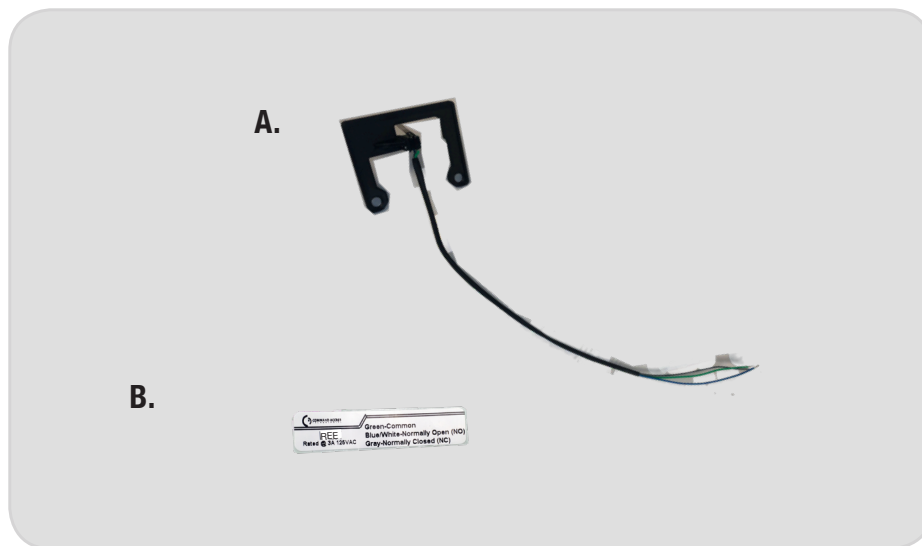




CATREEKIT-ET

INSERT INSTRUCTIONS

FIELD INSTALLABLE CAT ET25/26 & CAL ROYAL 7700/9800 SERIES EXIT TRIM.



KIT INCLUDES

- A. CAT REE Bracket
- B. REE Color code sticker

TOOLS REQUIRED

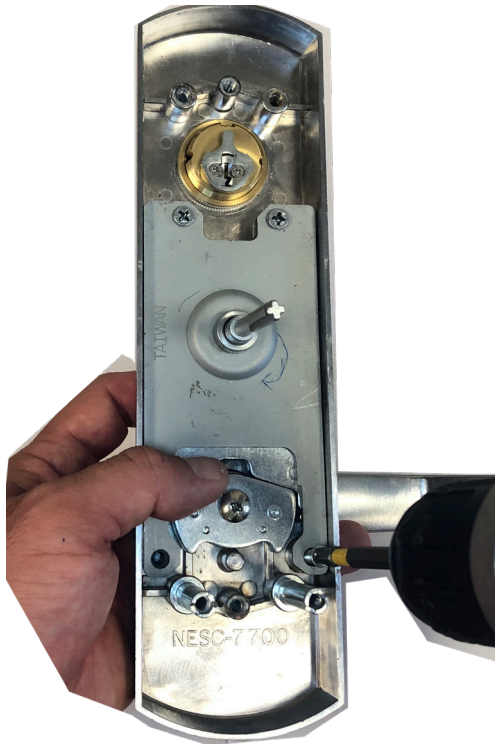
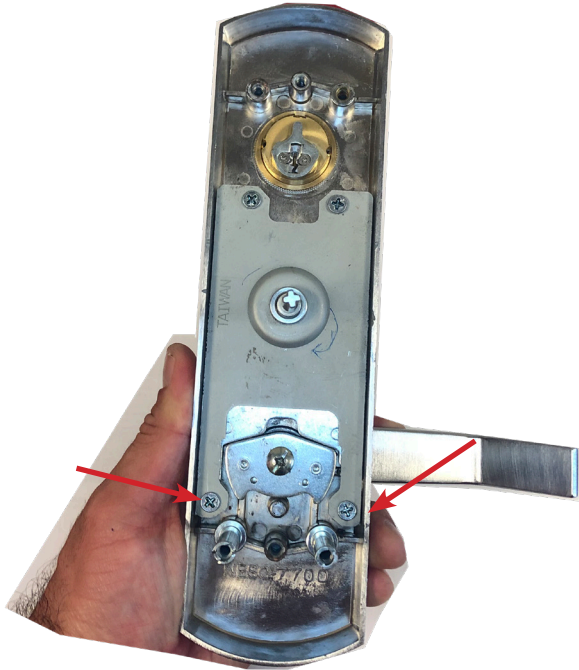
Cordless Drill or Phillips Screwdriver

SPECIFICATIONS

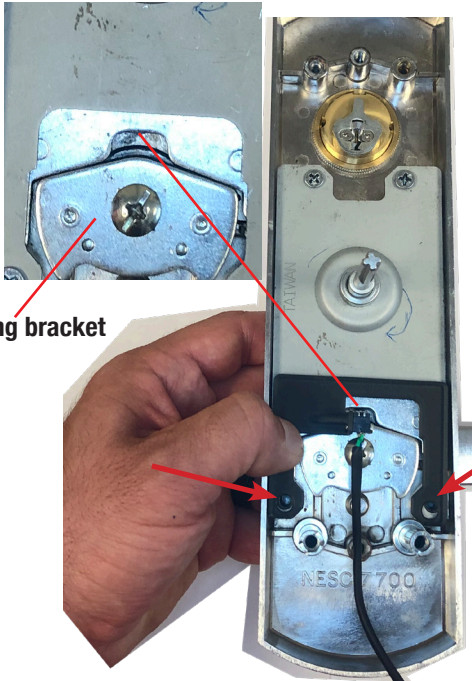
- Single Pole - Double Throw (SPDT)
- Rating: .5A @24VAC
- Configuration: Green - Common (C)
Blue - Normally Open (NO)
Gray - Normally Closed (NC)

INSTALLATION INSTRUCTIONS

1. REMOVE THE (2) BOTTOM SCREWS, SECURING BACK PLATE.



2. LINE UP REE BRACKET WITH EXSITNG SCREW HOLES & MAKE SURE SWITCH ARM SLIDES INTO OPENING ABOVE LIFTING BACKET.



Lifting bracket

3. RE-INSTALL (2) BOTTOM SCREWS TO SECURE REE BRACKET & BACK PLATE.



4. TEST SWITCH BY ACTIVATING LEVER UP & DOWN MAKING SURE THE SWITCH CHANGES STATES.