

NOTES: REF SPEC # CXWC11

CX-WC11 EQUIPMENT PACKAGE:

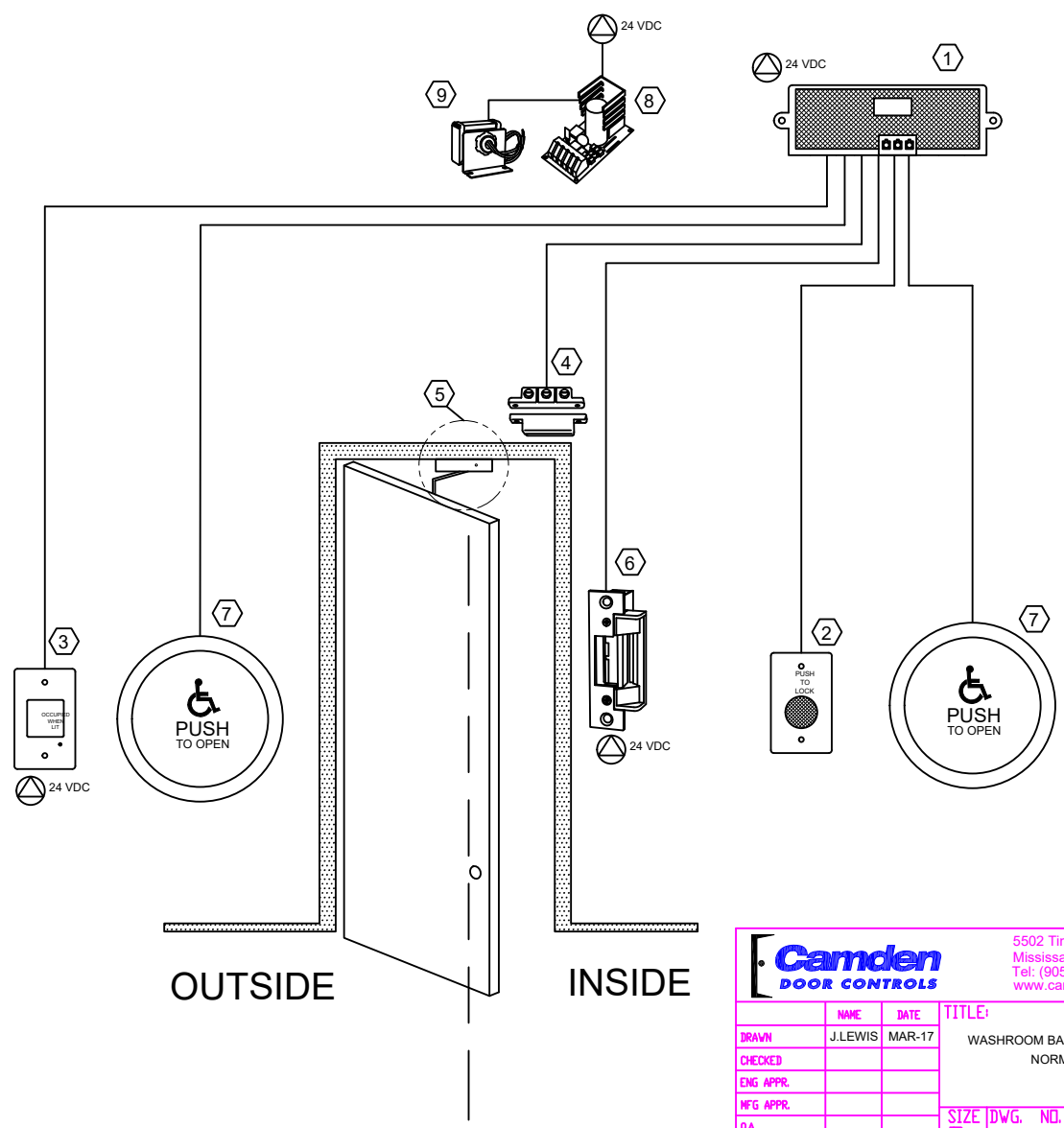
		SPEC REF
1	CX-33 Multi-Function Relay	2.2B-2A.1
2	CM-400/8 - 'PUSH TO LOCK' MUSHROOM PUSH BUTTON	2.2B-2A.2
3	CM-AF500 - 'OCCUPIED WHEN LIT' LED ANNUNCIATOR	2.2B-2A.3
4	CX-MDA - MAGNETIC DOOR CONTACT	2.2B-2A.4

ADDITIONAL PARTS REQUIRED BUT NOT INCLUDED WITH THE CX-WC11:

		SPEC REF
5	DOOR OPERATOR - SUPPLIED BY OTHERS	2.2B-2B.1
6	CX-ED2079 - GRADE2 UNIVERSAL ELECTRIC STRIKE	2.2B-2B.2
7	CM-60/4 - 6" ROUND ACTIVATION SWITCH X 2	2.2B-2B.3
8	CX-PS13 - 12/24 VDC LINEAR POWER SUPPLY	2.2B-2B.4
9	CX-TRX-4024 - 40VA, 24 VAC TRANSFORMER	2.2B-2B.4

SYSTEM OPERATION

- CX-WC11 OPERATION:
1. THE DOOR IS NORMALLY CLOSED AND EITHER LOCKED OR UNLOCKED.
 2. PRESSING THE EXTERIOR PUSH PLATE UNLOCKS AND OPENS THE DOOR.
 3. ONCE INSIDE AND THE DOOR IS CLOSED, PRESSING THE 'PUSH TO LOCK' MUSHROOM PUSHBUTTON, LOCKS THE DOOR, DISABLES THE EXTERIOR 'PUSH TO OPEN' PUSH PLATE SWITCH AND ILLUMINATES THE EXTERIOR ANNUNCIATOR TO SHOW 'OCCUPIED WHEN LIT'.
 4. PRESSING THE INTERIOR PUSH PLATE SWITCH UNLOCKS THE DOOR, DEACTIVATES THE ILLUMINATED ANNUNCIATOR AND RESETS THE SYSTEM.
 5. IF THE DOOR IS OPENED MANUALLY TO EXIT THE RESTROOM, THE OVERHEAD MAGNETIC CONTACT SWITCH RESETS THE SYSTEM.



		5502 Timberlea Blvd. Mississauga, ON Canada L4W 2T7 Tel: (905) 366-3377 www.camdencontrols.com	
DRAWN	J.LEWIS	DATE	MAR-17
CHECKED			
ENG APPR.			
MFG APPR.			
G.A.			
COMMENTS:			
TITLE:		WASHROOM BARRIER FREE DOOR CONTROL NORMALLY UNSECURED (CX-WC11)	
SIZE	DWG. NO.	REV	
B	CX-WC11DWG	2	
SCALE:	N/A	SHEET 1 OF 1	