

NOTES: REF SPEC # CXWC10

CX-WC10 EQUIPMENT PACKAGE:

		SPEC REF
1	CX-33 Multi-Function Relay	2.2B-2A.1
2	CM-400/8 - 'PUSH TO LOCK' MUSHROOM PUSH BUTTON	2.2B-2A.2
3	CX-MDA - MAGNETIC DOOR CONTACT	2.2B-2A.3

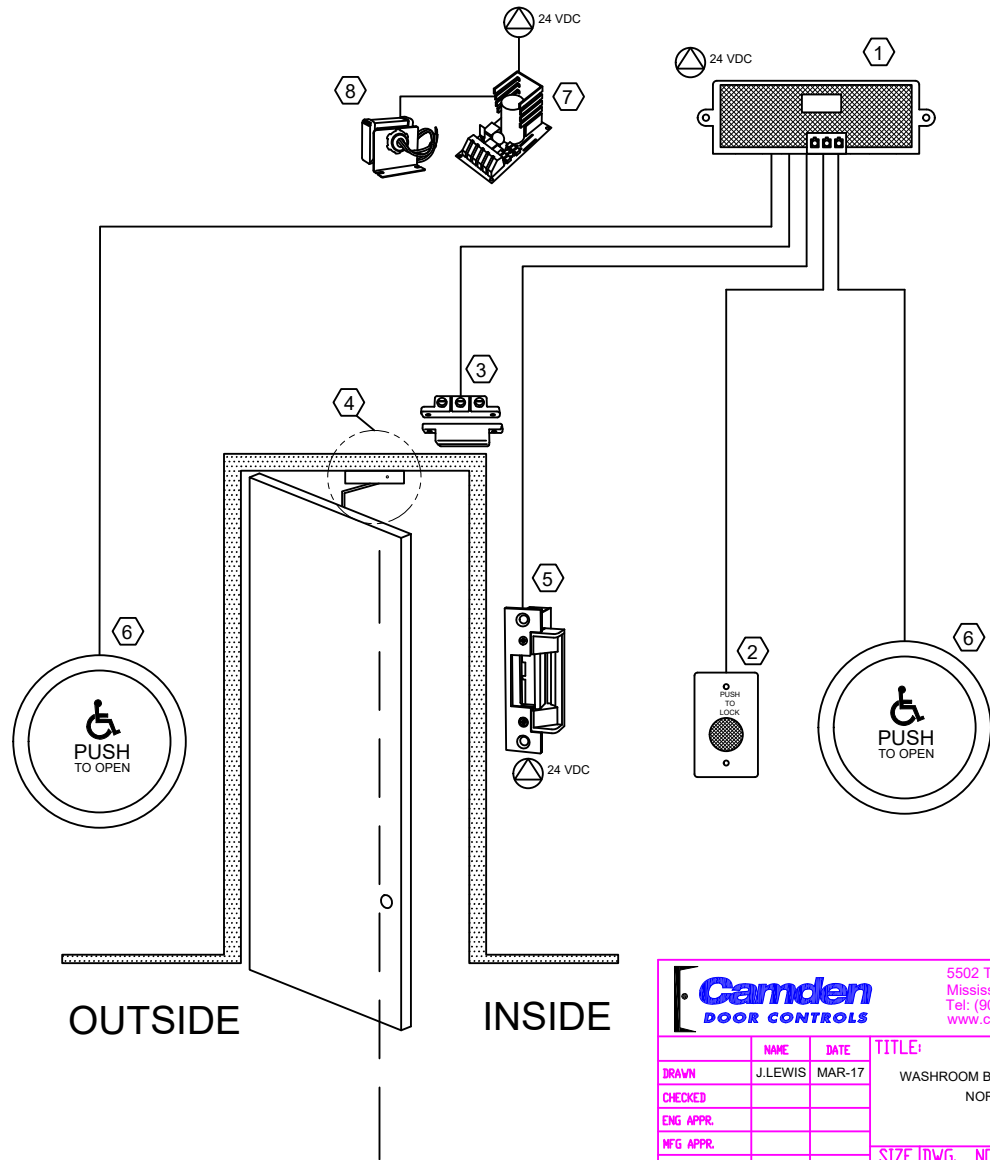
ADDITIONAL PARTS REQUIRED BUT NOT INCLUDED WITH THE CX-WC11:

		SPEC REF
4	DOOR OPERATOR - SUPPLIED BY OTHERS	2.2B-2B.1
5	CX-ED2079 - GRADE2 UNIVERSAL ELECTRIC STRIKE	2.2B-2B.2
6	CM-60/4 - 6" ROUND ACTIVATION SWITCH X 2	2.2B-2B.3
7	CX-PS13 - 12/24 VDC LINEAR POWER SUPPLY	2.2B-2B.4
8	CX-TRX-4024 - 40VA, 24 VAC TRANSFORMER	2.2B-2B.4

SYSTEM OPERATION

CX-WC10 OPERATION:

1. THE DOOR IS NORMALLY CLOSED AND EITHER LOCKED OR UNLOCKED.
2. PRESSING THE EXTERIOR PUSH PLATE UNLOCKS AND OPENS THE DOOR.
3. ONCE INSIDE AND THE DOOR IS CLOSED, PRESSING THE 'PUSH TO LOCK' MUSHROOM PUSH BUTTON, LOCKS THE DOOR, DISABLES THE EXTERIOR 'PUSH TO OPEN' PUSH PLATE SWITCH.
4. PRESSING THE INTERIOR PUSH PLATE SWITCH UNLOCKS THE DOOR AND RESETS THE SYSTEM.
5. IF THE DOOR IS OPENED MANUALLY TO EXIT THE RESTROOM, THE OVERHEAD MAGNETIC CONTACT SWITCH RESETS THE SYSTEM.



		5502 Timberlea Blvd. Mississauga, ON Canada L4W 2T7 Tel: (905) 366-3377 www.camdencontrols.com	
NAME	DATE	TITLE:	
J.LEWIS	MAR-17	WASHROOM BARRIER FREE DOOR CONTROL NORMALLY UNSECURED (CX-WC10)	
DRAWN		SIZE	REV
CHECKED		B	2
ENG APPR.		DWG. NO.	
MFG APPR.		CX-WC10DWG	
GA.		SCALE: N/A	SHEET 1 OF 1
COMMENTS:			