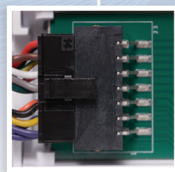


*"Innovation distinguishes between Leaders and Followers" Steve Jobs*

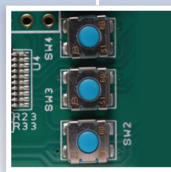
# Camden Introduces 'the' PIR Request to Exit Detector



CM-RQE70



**Plug-in wiring harness**  
Easier Installation



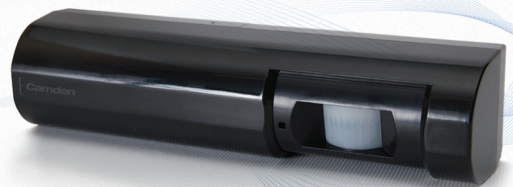
**On-board program Buttons**  
Faster detector set-up



**Small size**  
Mounts on door frames

Camden Door Controls started with all the features of the bestselling REX detectors on the market, and then added design innovations never seen in the industry before. The result is a next generation REX detector that can be mounted in more locations, is easier to wire and can be programmed with the press of a button. Best of all, the CM-RQE70 offers this remarkable innovation at a remarkably competitive price!

- Secondary device activation for additional security
- (4) Factory default operating modes, with the ability to customize mode attributes
- (2) Form 'C' contacts (DPDT)
- Momentary and latching relay modes
- Card/key, door position switch and REX switch inputs
- 92db. ON/OFF adjustable sounder
- Tamper switch
- Black or white models



CM-RQE70BK



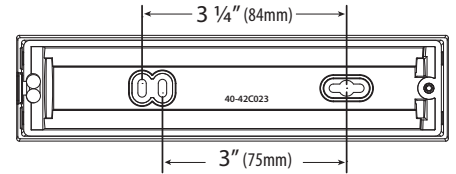
DISCOVER THE BEST IN DOOR ACTIVATING AND LOCKING PRODUCTS!

TOLL FREE: 1.877.226.3369 • TEL: 905.366.3377 • FAX: 905.366.3378  
info@camdencontrols.com • www.camdencontrols.com/rexdetector

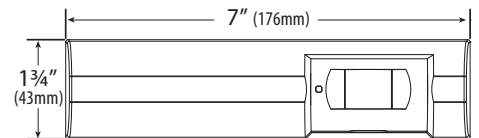


# PIR 'REQUEST TO EXIT' DETECTOR

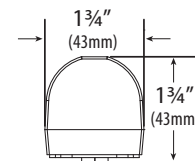
SPECIFICATIONS	
<b>Voltage:</b>	12 /24V DC operation
<b>Current Draw:</b>	50mA (max)
<b>Relays:</b>	(2) Form 'C' (DPDT)
<b>Contact Rating:</b>	3A @ 30VDC
<b>Programming:</b>	On-board push buttons and status LED
<b>Modes:</b>	- (4) Factory Default - (1) Fully Custom - Selectable Fail Safe/Fail Secure
<b>Coverage:</b>	- Max. 10' W x 10' H - Horizontal & vertical adjustment (mechanical) - Sensor sensitivity/range (electronic)
<b>Time Delay:</b>	Adjustable, 5, 15, 30, 45 & 60 second
<b>Sounder:</b>	ON/OFF, with adjustable volume
<b>Piezo Buzzer:</b>	92db.@ 10cm
<b>Indicator:</b>	Activation LED
<b>Card or Keypad Input:</b>	(1) N/O
<b>Door Position Switch Input:</b>	(1) N/O
<b>Request to Exit Input:</b>	(1) N/O
<b>Tamper Switch Contact Rating:</b>	50mA @ 12VDC
<b>Temp Operating Range:</b>	32°F-120°F (0-50°C)
<b>Humidity Range:</b>	0- 93% non-condensing
<b>Dimensions:</b>	7"W x 1 3/4"D x 1 3/4"H (176mm x 43mm x 43mm)
<b>Weight:</b>	0.25 Lbs. (0.12kg.)
<b>Colors:</b>	White or black



Back View



Front View



Side View

ORDERING INFORMATION	
MODELS	DESCRIPTION
CM-RQE70:	PIR 'REQUEST TO EXIT' detector, white, c/w (2) Form 'C' (DPDT) contacts, 12/24V AC/DC
CM-RQE70BK:	as above, Black
CM-RQEPW:	Single gang adaptor plate (White)
CM-RQEPK:	Single gang adaptor plate (Black)