

PD30-CVR & PD30F-CVR CVR EXIT - ALUMINUM DOOR
PD30 SERIES EXIT DEVICES

TEMPLATE: CAT-9706
REV. 0 04-27-23

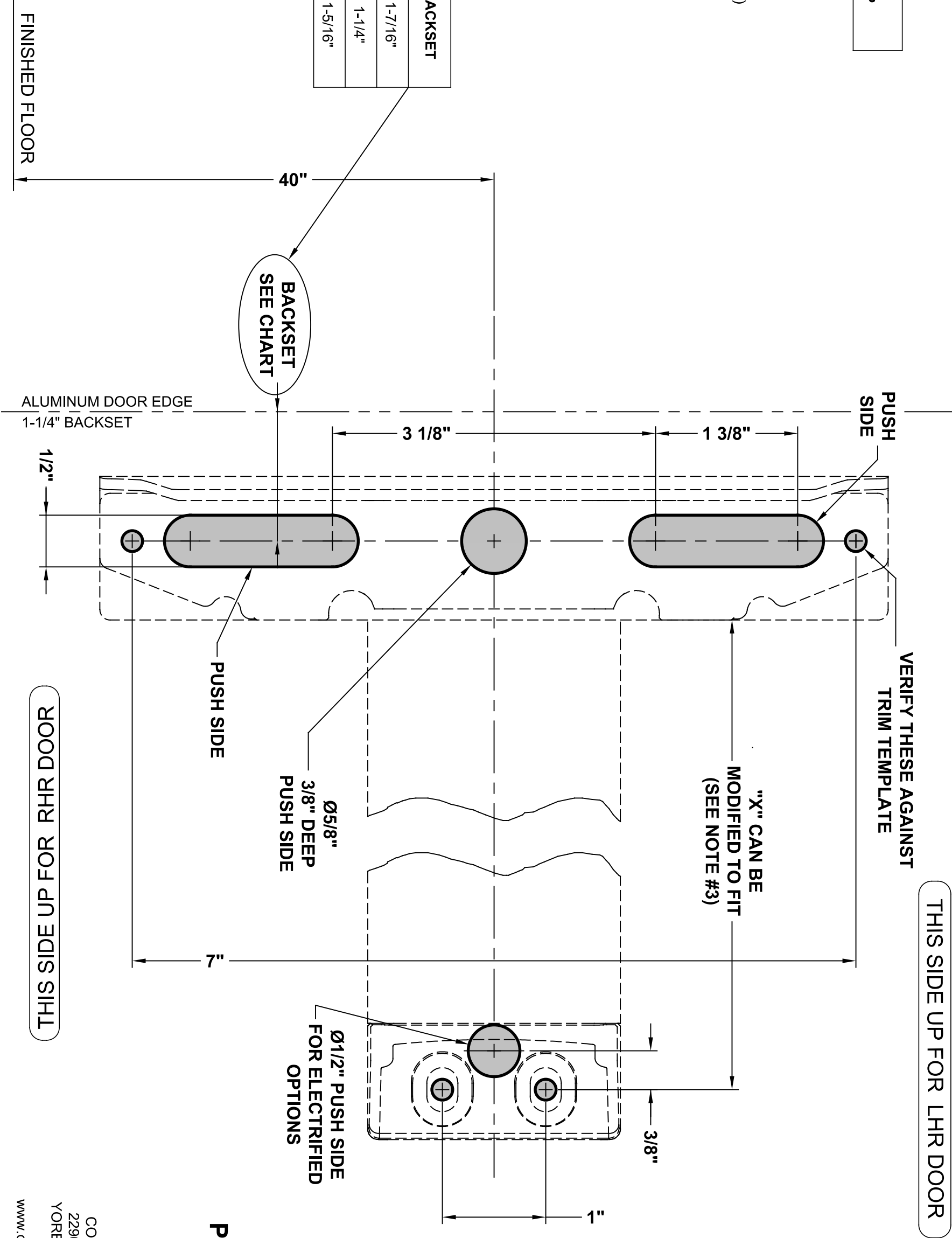
DEVICE

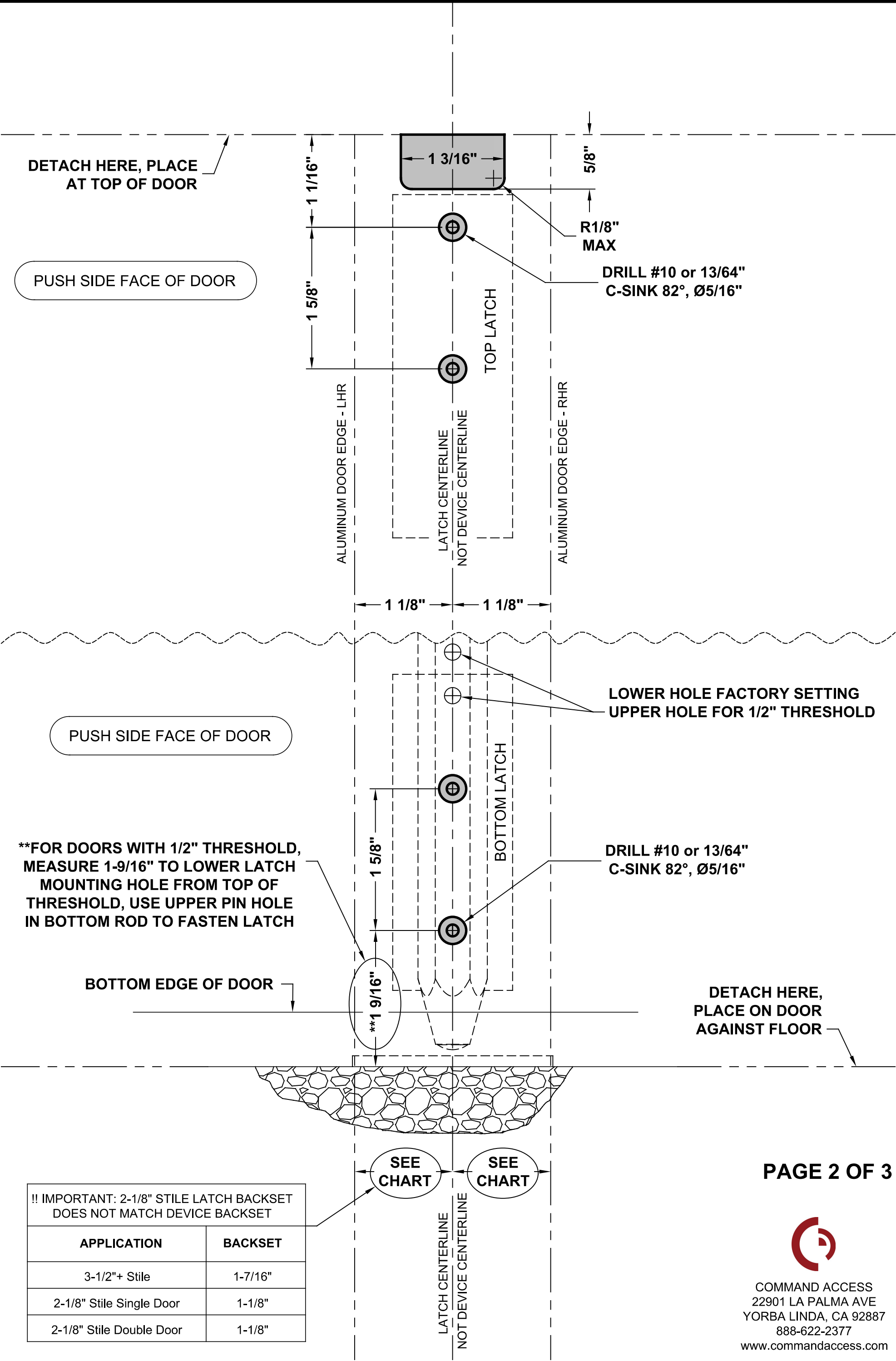
MACHINE SCREWS:
USE #7 OR 13/64" DRILL AND 1/4-20 TAP

NOTES:

- 1. VERIFY PRINTED TO SCALE
- 2. SEE TRIM TEMPLATE (IF APPLICABLE) FOR RELATED MACHINING DETAILS
- 3. DIMENSION "X" SIZED FOR DOOR. REFER TO DEVICE INSTRUCTIONS WHEN CUTTING DOWN FOR NARROWER OPENING
- 4. CHECK CATWEBSITE FOR MOST RECENT REVISION WWW.COMMANDACCESS.COM
- 5. MINIMUM STILE WIDTH: 2-1/8"

APPLICATION	BACKSET
3-1/2" + Stile	1-7/16"
2-1/8" Stile Double Door	1-1/4"
2-1/8" Stile Single Door	1-5/16"





CVR TOP/BOTTOM STRIKE

FOR PD30 SERIES EXIT DEVICES

TEMPLATE: CAT-9706
REV. 0 04-27-23

TOP STRIKE

**MACHINE SCREWS:
USE #25 OR 5/32" DRILL & #10-24 TAP**

Top Strike Frame Prep

**CUT TEMPLATE,
PLACE ON FRAME
- AGAINST DOOR STOP**

	LATCH CENTERLINE	NOT DEVICE CENTERLINE
1	1	1
2	2	2
3	3	3
4	4	4
5	5	5
6	6	6
7	7	7
8	8	8
9	9	9
10	10	10
11	11	11
12	12	12
13	13	13
14	14	14
15	15	15
16	16	16
17	17	17
18	18	18
19	19	19
20	20	20
21	21	21
22	22	22
23	23	23
24	24	24
25	25	25
26	26	26
27	27	27
28	28	28
29	29	29
30	30	30
31	31	31
32	32	32
33	33	33
34	34	34
35	35	35
36	36	36
37	37	37
38	38	38
39	39	39
40	40	40
41	41	41
42	42	42
43	43	43
44	44	44
45	45	45
46	46	46
47	47	47
48	48	48
49	49	49
50	50	50
51	51	51
52	52	52
53	53	53
54	54	54
55	55	55
56	56	56
57	57	57
58	58	58
59	59	59
60	60	60
61	61	61
62	62	62
63	63	63
64	64	64
65	65	65
66	66	66
67	67	67
68	68	68
69	69	69
70	70	70
71	71	71
72	72	72
73	73	73
74	74	74
75	75	75
76	76	76
77	77	77
78	78	78
79	79	79
80	80	80
81	81	81
82	82	82
83	83	83
84	84	84
85	85	85
86	86	86
87	87	87
88	88	88
89	89	89
90	90	90
91	91	91
92	92	92
93	93	93
94	94	94
95	95	95
96	96	96
97	97	97
98	98	98
99	99	99
100	100	100

7/16"

**DETACH HERE, PLACE
ABOVE DOOR &
AGAINST STOP**

DRILL AND TAP AFTER STRIKE ADJUSTMENT

PULL SIDE DOOR EDGE

PUSH SIDE DOOR EDGE

**DETACH HERE &
PLACE ON FLOOR**

PULL SIDE DOOR EDGE

Ø1"
3/4" DEEP

PUSH SIDE DOOR EDGE

Ø1/4
1" DEEP FOR
INCLUDED ANCHOR

A diagram showing a horizontal line with an arrow pointing to the left, indicating motion towards a vertical line on the left representing a wall.

Bottom Strike Floor Prep

LATCH CENTERLINE	NOT DEVICE CENTERLINE
------------------	-----------------------

**CUT TEMPLATE
PLACE ON FLOOR
- ALIGNED WITH DOOR**

PAGE 3 OF 3



COMMAND ACCESS
22901 LA PALMA AVE
YORBA LINDA, CA 92887
888-622-2377
www.commandaccess.com