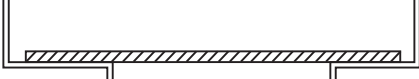


FRAME APPLICATIONS

(Recommended) Reinf. 12" Min. Width
Centered in Opening for U.L.
Fire Rated Frames.
(Supplied by Frame Mfr.)

"A"

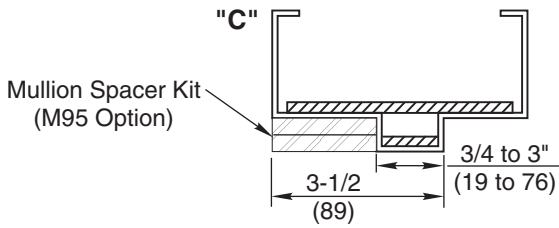


Reinf. 3-1/2" Min. Width
Centered in Opening.
(Supplied by Frame Mfr.)

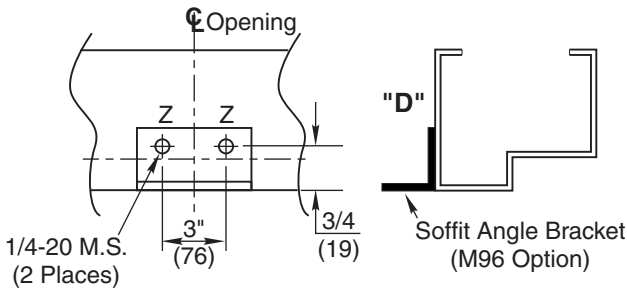
3" (76) MIN.

Recommended for double rabbeted frames where stop face is less than 3" (76) wide.

"C"



Recommended for header configuration with less than 3" (76) of mounting surface.



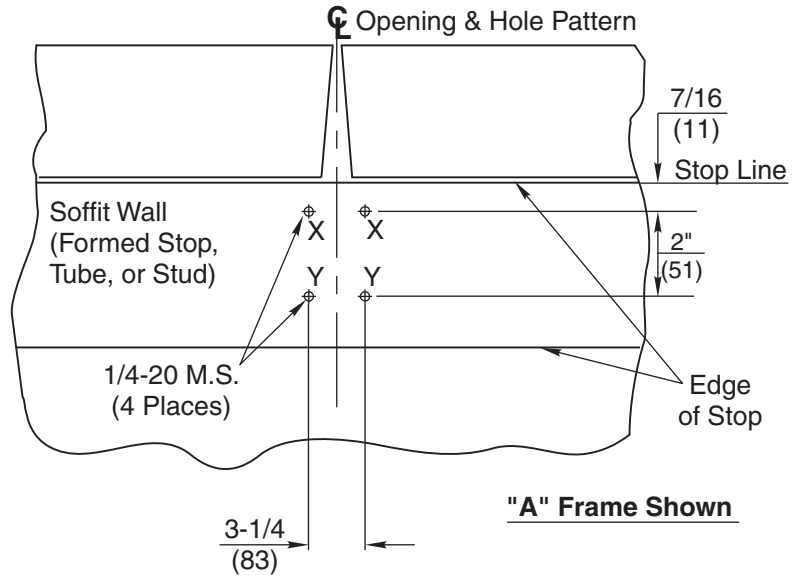
Notes:

1. Do not scale drawing. Dimensions shown in inches(mm).
2. Prepare mounting holes when installing the mullion. Use this template for structural frame preparation.
3. Metal frames should provide mounts to maintain not less than (3) full screw threads engaged.
4. Wood frames should provide not less than 5/8 (16) screw engagement to structural beam (construction grade lumber, or better).
5. 900(A) Series and 900(B)KM Series mullions are made from 2" x 3" (51 x 76) tubular steel. Locate device from mullion face (strike seat).
6. Two flat head 1/4-20 x 1-1/4 machine screws are included with Mullion Spacer Kit (M95 Option) when so ordered.

**907(A), 908(A) & 910 Mullions
907BKM, 908BKM & 910KM Mullions
Frame Preparation**

SOFFIT PREP (TOP VIEW)

—TYPICAL FOR ALL FRAMES—



"A" Frame Shown

Application	Holes Required
"A"	X & Y
"C"	X & Y (Note 6)
"D"	X & Z



ASSA ABLOY

www.corbinrusswin.com

SUPERSEDES	DO NOT SCALE DRAWING
TEMPLATE NUMBER	DATE
T31074	02-08