



Access 3[®] CLIQ[®] Cylinders and Keys

*Available through Authorized Channel Partners only. Contact your local
ASSA ABLOY Door Security Solutions sales consultant for details.*

Product Catalog

Experience a safer
and more open world

About ASSA ABLOY's Authorized Channel Partner and Certified Integrator Programs

The Corbin Russwin Access 3® CLIQ® solution is part of the expanding portfolio of ASSA ABLOY intelligent keys and electronic cylinders that take key systems to a whole new level. In the case of Access3 CLIQ, we're combining a patented, high-security key system with a programmable electronic interface that increases security exponentially with the addition of audit trails and date/time based schedules. As such, these products require training and certification of resellers and security professionals to ensure proper product selection, successful deployment, and customer satisfaction.

To aid our customers in this area, ASSA ABLOY has created two programs that provide the necessary training to sell, order, install and service CLIQ intelligent key and electronic cylinder products:

The Authorized Channel Partner (ACP) program for CLIQ solutions is open to resellers, who sell ASSA ABLOY high-security key systems and electro-mechanical locking devices to certified security professionals, and help with product selection based on the application.

The Certified Integrator (CI) program for CLIQ solutions is open to security professionals and systems integrators with an expertise in high-security key systems and electronic access control systems, and provides hands on training to familiarize certified integrator candidates on product features and applications. It also gives them valuable experience installing, commissioning, and troubleshooting the products in a real-world environment.

For more information on the qualifications for becoming an ACP or CI for CLIQ solutions, contact your local ASSA ABLOY Door Security Solutions sales consultant for details.

Sold through:



Authorized Channel Partner
ASSA ABLOY

Installed by:



Certified Integrator
ASSA ABLOY



Index

- Overview 3
- Benefits 4
- Bluetooth..... 5
- Programming Devices 5
- Mortise Cylinders..... 6
- Rim Cylinders..... 7
- Component Cylinders 8
- How To Order 9
- Keys..... 10
- Software Management 11
- System Administration 12
- Architectural Specifications 13
- System Information Document 14

Corbin Russwin Access 3® CLIQ® brings the features of electronic access control into our patented Access 3 key system. Installed just like a mechanical cylinder with no wiring, no change in door prep or appearance of a mechanical opening, Access 3 CLIQ offers end users an audit trail, user access schedules and the ability to quickly and remotely change intelligent key authorizations with the Access 3 CLIQ Web Manager and Remote. Access 3 CLIQ cylinders can be added to existing Access 3 key systems for a higher level of control, and the added benefit of an electronic master key for added security, flexibility and low cost rekeying.

Key Features:

- Mechanical and electronic technology are combined for superior security with Corbin Russwin patented key control
- Up to 1,000 audit records stored in each key and cylinder, providing information unavailable in a mechanical system
- Powered by an easily replaceable coin cell battery with 20,000 cycle battery life
- Self-cleaning electronic contact point for a long lasting key and reliable connection
- Available with RFID/PROX coil insert for dual use with HID compatible systems
- Rated for -20 degrees fahrenheit to 122 degrees fahrenheit (cylinder and key)
- Visible and audible status feedback
- Compact size in water resistant housing
- Bluetooth enabled option for programming and auditing keys
- Factory maintained key system



Benefits

- A mechanical key system that also has
- Scheduling, to limit access to the days, times of your choosing
 - Audit trail, in both the key and cylinder for a comprehensive view of access
 - Expiring credentials for greater security or limited access
 - 2 year warranty

Audit Accountability

Audit information recorded in both the lock and key shows a time-and-date stamped record of every event, including authorized accesses and unauthorized attempts.

Uses Existing Hardware

The Access 3 CLIQ intelligent key provides all power to the cylinder, eliminating the need for any hard wiring or power supply. Simply remove the existing mechanical cylinder and install the Access 3 CLIQ cylinder.

Reduces Risk of Lost Keys

Respond quickly to security threats, lost or stolen keys, or personnel changes utilizing expiring intelligent key validation intervals and remote programming.

Electronic Scheduling

Intelligent keys are programmed for specific openings with fully flexible scheduling. Access Profiles can be created where programming updates are generated automatically when an opening is added or removed.



Benefits

Access 3® CLIQ®



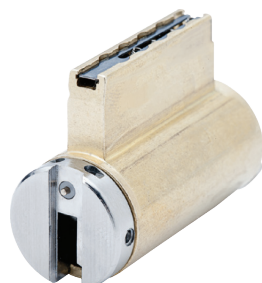
Keys:

- LED status indicator
- Quick and Low Cost Battery Replacement
- 2 year or 20,000 Cycle Battery
- Lithium Battery CR2330
- Water Resistant
- Rated For -22°F to 122°F
- Compact Size
- Up to 1,000 Audit Events
- Program Permissions/Schedules To Either Key or Cylinder
- Patented Key Control
- Mechanical and Electronic Security



Mortise/Rim Cylinders:

- Program Permissions/Schedules To Either Key Or Cylinder
- Up To 750 Audit Events
- No Wiring Required
- Program 1,000 Authorized Keys
- Combines Mechanical and Electronic Security
- No Additional Door Hardware Required



Component (KIK/KIL) Cylinder:

- Easy To Maintain Power Free Cylinders
- Installs In Minutes
- Available In Most Standard Finishes



Authorized Channel Partner
ASSA ABLOY

Bluetooth

Access 3® CLIQ®

Access 3® CLIQ® intelligent keys are now available with BLE connectivity. The Access 3 CLIQ CONNECT Key offers Access 3 CLIQ remote updates when paired with supported iOS and Android smartphones. The Access 3 CLIQ CONNECT APP is available as a free download from either App Store and manages the CONNECT Key(s) pairing to the smartphone while reporting key battery level, marking, and system number. Keys are user friendly with visible and audible status feedback, compact in size with water resistant housing, and are powered by an easily replaceable CR2330 battery. Utility patented key control provides protection against unauthorized key duplication.



CONNECT App features:

- Bluetooth (BLE) enabled with iOS & Android Apps
- Free App download from Apple or Play Stores
- Obtain remote updates via supported Apple and Android Smartphones
- Key audit report via CONNECT App
- Pair and manage multiple CONNECT keys

Programming Devices

CLIQ Programming Devices

Description	Part Number
Corbin Ruswin Access 3 CLIQ Local Programming Device (Includes USB Cable)	768F359
Corbin Ruswin Access 3 CLIQ Remote Wall Programming Device	768F369
Corbin Ruswin Access 3 CLIQ Mobile Programmer	768F379
Corbin Ruswin Access 3 CLIQ Outdoor, Vandal Resistant, Wall Programmer	768F389



Local Programming Device
768F359



Wall Programmer
768F369



Mobile Programmer
768F379



Outdoor, Vandal Resistant,
Wall Programmer
768F389



Mortise Cylinders

Access 3® CLIQ®

Mortise Cylinders

For use with ML2000 Series mortise locks (including electrified and EAC locksets)

Standard Mortise Cylinders supplied with:

- Solid brass cylinder, 1-5/32" (29mm) diameter
- Standard cylinder collar (253F97). Optional Collars/Spacers available and ordered separately, refer to product catalogs for additional information
- Factory keyed



Mortise Cylinders

Type	Length	Cam	Finish
160E	114 - 1-1/4" (32mm) 138 - 1-3/8" (35mm) 112 - 1-1/2" (38mm) 134 - 1-3/4" (44mm)	A01 - Steel case mortise locks except classroom and institutional privacy functions. Deadbolt functions of green cast iron case mortise locks. NOT for master ring mortise cylinders. A02 - Steel case mortise lock classroom (55), inside of vestibule (42) and institutional privacy (69) functions. Most exit device trims. NOT for master ring mortise cylinders.	605 - Bright Brass 606 - Satin Brass 611 - Bright Bronze 612 - Satin Bronze 613 - Dark Oxidized Satin Bronze - oil rubbed 618 - Bright Nickel Plated 619 - Satin Nickel Plated 622 - Flat Black Coated 625 - Bright Chromium Plated 626 - Satin Chromium Plated



Authorized Channel Partner
ASSA ABLOY

Rim Cylinders

Access 3® CLIQ®

Rim Cylinders

For use with Exit Devices



Access 3 CLIQ Rim Cylinders supplied with:

- Surface mount collar, back plate and 2 breakaway mounting screws

Rim Cylinders

Type	Length	Finish
360E	200 - 2" (51mm) tailpiece 200V - 2" (51 mm) Vertical Tailpiece	605 - Bright Brass 606 - Satin Brass 611 - Bright Bronze 612 - Satin Bronze 613 - Dark Oxidized Satin Bronze - oil rubbed 618 - Bright Nickel Plated 619 - Satin Nickel Plated 622 - Flat Black Coated 625 - Bright Chromium Plated 626 - Satin Chromium Plated



Component Cylinders

Access 3® CLIQ®

Component Cylinders

For use with all Corbin Russwin lever and knob cylindrical locks.



Component Cylinders

Type	Tailpiece	Lockset	Finish
260E	031	CL3100 Series Vandal Resistant	606 - Satin Brass 626 - Satin Chrome
	031H	CK4300 Knob	
	033	CL3300, CL3500, CL3800	
	044	CK4400	



How to Order Access 3® CLIQ® Cylinders

160E	—	114	—	A01	—	CRA1	—	x Finish																																
Cylinder Type		Length		Cams		Keyway																																		
Mortise 160E KIK/KIL 260E Rim 360E		Mortise Cylinder 114 1-1/4" (32mm) 138 1-3/8" (35mm) 112 1-1/2" (38mm) 134 1-3/4" (44mm) Rim Cylinder 200 2" (51mm) Tailpiece 200V 2" (51mm) Vertical Tailpiece Component (KIK/KIL) Cylinder <table border="1"> <thead> <tr> <th>Tailpiece</th> <th>Lockset</th> </tr> </thead> <tbody> <tr> <td>031</td> <td>CL3100</td> </tr> <tr> <td>031H</td> <td>CK4300</td> </tr> <tr> <td>033</td> <td>CL3300, CL3500, CL3800</td> </tr> <tr> <td>044</td> <td>CK4400</td> </tr> </tbody> </table>	Tailpiece	Lockset	031	CL3100	031H	CK4300	033	CL3300, CL3500, CL3800	044	CK4400		Mortise Cylinder A01 A02		CRA1 CRA2 CRB1 CRB2 CRC1 CRC2 CRD1 CRD2		<table border="1"> <thead> <tr> <th>Description</th> <th>Specify</th> </tr> </thead> <tbody> <tr> <td>Bright Brass</td> <td>605</td> </tr> <tr> <td>Satin Brass</td> <td>606</td> </tr> <tr> <td>Bright Bronze</td> <td>611</td> </tr> <tr> <td>Satin Bronze</td> <td>612</td> </tr> <tr> <td>Dark Oxidized Satin Bronze, Oil Rubbed</td> <td>613</td> </tr> <tr> <td>Bright Nickel Plated</td> <td>618</td> </tr> <tr> <td>Satin Nickel Plated</td> <td>619</td> </tr> <tr> <td>Flat Black Coated</td> <td>622</td> </tr> <tr> <td>Bright Chromium Plated</td> <td>625</td> </tr> <tr> <td>Satin Chromium Plated</td> <td>626</td> </tr> </tbody> </table>	Description	Specify	Bright Brass	605	Satin Brass	606	Bright Bronze	611	Satin Bronze	612	Dark Oxidized Satin Bronze, Oil Rubbed	613	Bright Nickel Plated	618	Satin Nickel Plated	619	Flat Black Coated	622	Bright Chromium Plated	625	Satin Chromium Plated	626
Tailpiece	Lockset																																							
031	CL3100																																							
031H	CK4300																																							
033	CL3300, CL3500, CL3800																																							
044	CK4400																																							
Description	Specify																																							
Bright Brass	605																																							
Satin Brass	606																																							
Bright Bronze	611																																							
Satin Bronze	612																																							
Dark Oxidized Satin Bronze, Oil Rubbed	613																																							
Bright Nickel Plated	618																																							
Satin Nickel Plated	619																																							
Flat Black Coated	622																																							
Bright Chromium Plated	625																																							
Satin Chromium Plated	626																																							

KIK/KIL are only available in 606 & 626 finishes.

Mortise Cylinders

Quantity	Keyset	Cylinder	Length	Cam	Keyway	Finish
50	AA1	160E	114	A01	CRA1	626

Rim Cylinders

Quantity	Keyset	Cylinder	Length	Keyway	Finish
50	AA1	360E	200	CRA1	626

Component (KIK/KIL) Cylinders

Quantity	Keyset	Cylinder	Tailpiece	Keyway	Finish
50	AA1	260E	033	CRA1	626

Keys

Access 3® CLIQ®



Part Number	Description	Color
—	Dynamic Key	Black
—	Dynamic Key - BLE	Blue
—	C-Key (Admin Key)	Red
768F339	Battery covers Bag of 25 - Programmed	Black

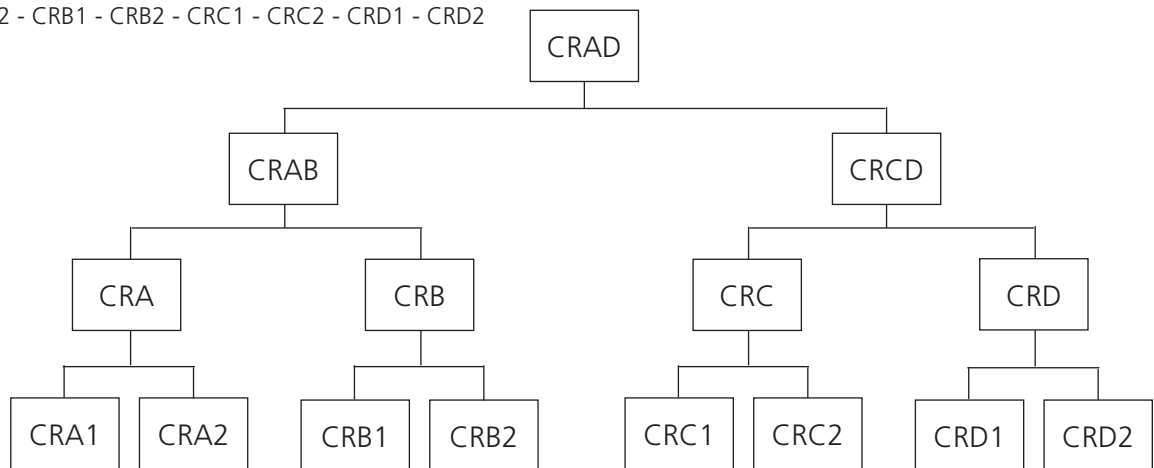
For Multiplex Masterkey Systems (CR keyway family shown)

Ordering example:

- Black key: CRA1-6PIN-48-DYN-AS60
- Blue key: CRA1-6PIN-48-DYN-BLE-AS60
- Red key: CRAD-6PIN-48-C-KEY-AS60

Keyway Group

- All section – CRAD
- Multi-section – CRAB - CRCD
- Multi-section – CRA - CRB - CRC - CRD
- Keyway – CRA1 - CRA2 - CRB1 - CRB2 - CRC1 - CRC2 - CRD1 - CRD2
- Sample Keyway - MB



Cylinder Spray Lubricant

- Access 3® CLIQ® cylinders are mechanical devices and require preventive maintenance. At a minimum, Access 3 CLIQ cylinders should be lubricated twice a year; more if installed in extreme installations.
- Access 3 CLIQ cylinders should not be exposed to chemical washes or painted.
- 3.0 oz aerosol part number 768F441



Authorized Channel Partner
ASSA ABLOY

Software Management

Access 3® CLIQ®

Access 3® CLIQ® technology offers web management key systems utilizing Access 3 CLIQ Web Manager. This robust and versatile system allows administrators the ability to manage Access 3 CLIQ intelligent keys and cylinders from anywhere with internet access. With the optional Remote Wall Programming Devices, the intelligent keys can obtain authorization changes and recurring validity with timely expirations for enhanced security while retrieving audit data simultaneously. Several feature packages are available to meet a wide range of customer requirements.

Access 3 CLIQ Web Manager 2016

	Description	Hosted Basic	Hosted+	Hosted Enterprise
Features	Domain Administration	✓	✓	✓
	Remote Programming	x	✓	✓
	Key Revalidation	x	✓	✓
	Access Profiles	x	✓	✓
	Temporary Access Groups	x	✓	✓
	Flexible Revalidation	x	x	✓
	Cylinder Groups	x	x	✓
	Web Services for 3rd Party Applications	x	x	✓

Corbin Russwin Web Hosting Services

Description	Part Number
Hosted Basic	768F399
Hosted Remote+	768F409
Hosted Enterprise	768F419

Customer Hosted Web Services

Description	Part Number
Hosted Enterprise with Web Services	Contact Factory



System Administration

Access 3® CLIQ®

Access 3® CLIQ® System Administration

All Corbin Russwin Access 3 CLIQ key systems must have a signed System Information Document (SID), located in the back of this catalog and available online, for each facility. The SID designates a primary systems administrator for the facility. Unless otherwise indicated by the primary systems administrator by way of a separate specific letter of authorization, all shipments for CLIQ product will go to the shipping address on the Systems Information Document.

All key blanks are to remain in the possession of the facility and must be accounted for. Any factory defect or incorrectly cut keys must be returned to the factory. All damaged or incorrectly field cut keys must be destroyed.

Specific randomized security codes will be required for each order unless the systems administrator opts out of this feature. For more information, see the Systems Information Document.

Keyway Administration and Assignment

All keyways will be noted on the master key system bitting list. Corbin Russwin Key System Administration will assign all Access 3 CLIQ keyways. Keyways will be assigned according to facility type, geographic location and keying system specifications. Unless otherwise authorized, all keys will ship directly to the end user. All master key systems will be registered with Key Systems Administration and all bittings will be factory created.

Key Control

Key control will be maintained by complying with the Corbin Russwin Security Policy. For a copy, contact Key System Administration or visit our web site at www.corbinrussswin.com. System information and/or systems-related product will be forwarded directly to the owner, unless otherwise indicated by the owner's appointed administrator.

Authorized Distributors

Corbin Russwin Access 3 CLIQ is a system based product and is provided through authorized distribution. An authorized distributor may stock and service products upon specific written authorization from the primary system administrator of the facility. Authorized distributors who carry inventory for a specific facility's system must provide valid receipts and disbursements of all products, specifically key blanks/cut keys. All key blanks in the possession of an authorized distributor must be accounted for. Any defective, incorrectly cut or damaged key blanks must be destroyed.



Authorized Channel Partner
ASSA ABLOY

Architectural Specifications

Access 3® CLIQ®

Corbin Russwin Access 3® CLIQ®

Performance Specification

A. Digital Cylinders and Keys:

1. Manufacturers: Subject to compliance with requirements, provide products by one of the following:
 - a. Corbin Russwin; Corbin Russwin Access 3 and/or Corbin Russwin Access 3 CLIQ.
2. Digital Cylinders: Provide original manufacturer cylinders to meet the following minimal requirements:
 - a. Cylinders operate as key-based product
 - b. Cylinders to combine both electronic technology and mechanical pinning for two independent forms of security protection.
 - 1) Mechanical protection shall include:
 - a) Three locking elements consisting of a slider mechanism, a sidebar mechanism with tumbler rotation and pin tumbler elevation
 - b) Lock tumblers with dual-axis action, with one axis utilized for pin tumbler rotation and the other axis utilized for positioning key cuts
 - c) Automatic mechanical relock upon removal of the key without the aid of battery power
 - 2) Electronic protection shall include:
 - a) Unique security code for every system
 - b) Electronic communication protected by minimum of 64-bit DES encryption
 - 3) Cylinders automatically relock upon removal of the key without the aid of battery power.
 - c. Cylinders shall install without requiring any wiring or electricity and are capable of retrofitting existing hardware without any special door or door frame modifications.
 - d. Cylinders to provide time-stamped electronic audit with no less than 700 operations or attempted operations and stored in non-volatile memory within the cylinder and accessible with an administrative key that holds no less than 2000 records.
 - e. Provide scheduling with no less than 1000 user groups per cylinder and 1000 individual users per user group.
 - f. Retrofit into rim, mortise, or key-in-lever cylinder types
3. Digital Keys: Provided original manufacturer keys to meet the following minimal requirements:
 - a. Keys to combine both electronic technology and mechanical pinning for two independent forms of security protection.
 - 1) Mechanical Security Features:
 - a) Keys to be protected by U.S. Utility patent to ensure against unlawful key duplication
 - b) Key must have no fewer than 6 mechanical cuts with varying depths and angles to each cut
 - c) Key must be no less than .125" thick for strength
 - d) Capable of providing a single master key with over 1,000,000 (1 million) usable, not interchangeable change keys in a single keyway

2) Electronic Security Features:

- a) Key electronic security codes are to be unique to any system with electronic communication a minimum 64-bit DES encryption.
- b) Keys to provide access control functions with non-volatile system programming allowing loss of battery life to retain key access rights, and/or audit records.
- b. Keys to allow different schedules for up to 30 different cylinder groups.
- c. Keys to operate cylinder type products with a minimum capacity of 1000 user groups per key and 1000 individual users per user group.
- d. Keys to provide a time-stamped audit for up to the most recent 100 operations or attempted operations.
- e. Keys are powered by a common watch-style battery, Model CR2025, with an estimated 2 years or 20,000 openings per battery life.
- f. Keys to provide multiple level battery indicator via flashing LED and audible tone.
- g. Keys to be compact in design and operate in a similar manner as mechanical key.
- h. Keys shall not be limited by a timeframe to unlock the cylinder once inserted, if key is properly authorized.
- i. Keys to require no additional maintenance other than regular battery replacement.
4. Digital Cylinder System Software: Provide digital cylinder manufacturer's original management software supporting the following features:
 - a. Auditing capability of both the digital cylinder and the key.
 - b. Product management by the system software with the following provisions:
 - 1) Lost or stolen keys to be deactivated from the system.
 - 2) User schedules set uniquely for each key holder.
 - 3) Software access protected by password and unique system authorization key.
 - 4) System capacity to operate up to 65,535 keys.
 - c. System software to include programming device and required cabling necessary for communication to host computer.
5. Manufacturers Quality Assurance:
 - a. Manufacturer will have minimum (20) years of documented experience in providing electronic cylinder design and manufacture, providing related access control and security systems equipment and software into multiple markets with a proven record of successful in-service performance.



System Information Document

Access 3[®] CLIQ[®]

Access 3[™] and Pyramid System Information Document

System: _____AP _____AS / AHS _____CLIQ _____Pyramid

NOTE: System Information Document required for all new systems; see reverse for additional document requirements.

*IMPORTANT: Corbin Russwin Access 3 Product is available with a "0" cut depth for AP systems **only** and it is not available for use in an AS or AHS security level product. If there is a possibility to elevate the AP system to AS or AHS, any master keying expansion requests should be discussed with a Corbin Russwin Key Records team specialist.*

Facility Name: _____ Facility Name: _____

Mailing Address: _____ Shipping Address: _____

City: _____ City: _____

State/Province: _____ Zip Code/Postal: _____ State/Province: _____ Zip Code/Postal: _____

Phone: (_____) _____

Fax: (_____) _____

E-Mail: _____

Time Zone: _____
Daylight Savings: _____

By: _____
(Print Name, Primary Systems Administrator) (Title) (Authorized Signatures)

I understand that if any of the authorized representatives of this Facility (as set out below) are removed from their duties for any reason whatsoever, it is my responsibility to notify Corbin Russwin Key Systems Administration, in writing, of their release and the names of their replacements.

Date: _____

Authorized Facility Representatives (Printed Name)	(Title)	(Authorized Signatures)
_____	_____	_____
_____	_____	_____
_____	_____	_____

Please attach any additional.

_____ (Signature or Initial by System Administrator Only)

"OPT-OUT" Option (System Type AS & AHS Only): By selecting this option I elect not to use the randomized security codes and agree to substitute them with a Letter of Authorization.



System Information Document

Access 3® CLIQ®

Access 3® AP Required Administrative Documents:

- Mandatory; all new systems will require a completed System Information Document (orders can not be entered without this document). The fully executed original document will be kept on file at Corbin Russwin.
- Subsequent order requirement. A letter of authorization will be required if the product is shipped to an address other than what's recorded on the System Administration Document, and/or if the address on the purchase order is different than what is listed on the System Information Document.

Access 3 AS & AHS Required Administrative Documents:

- Mandatory; all new systems will require a completed System Information Document (orders can not be entered without this document). The fully executed original document will be kept on file at Corbin Russwin.
- Subsequent order requirement: A specific randomized security code will be required for each order unless "Opt-Out" has been authorized by the systems administrator.
- If the "Opt Out" option is **NOT** selected
 - o A correct system specific (randomized) security code must be included with each subsequent order.
 - Security codes are specific to each order.
 - o If the shipping address is other than the one listed on the System Information Document, a Letter of Authorization signed by one of the recorded authorized representatives of the facility is required.
 - o Letter of Authorization must contain the same shipping address that appears on the customer's Purchase Order.
 - o Letters of Authorization will not be kept on file at factory.
 - o Without the proper security code, Letter of Authorization, or if the shipping address is other than what's listed on the System Information Document, the order cannot be processed.
- If the System Administrator elects not to use security codes as part of the authorization process, the "Opt Out" option can be authorized by the system administrator.
 - o If the "Opt Out" option **IS** selected
 - A system-specific security code is not required.
 - Letter of Authorization must be signed by one of the facility's authorized representatives.
 - If the shipping address is other than the one listed on the System Information Document, a Letter of Authorization will be required.
 - Letter of Authorization must contain the same shipping address that appears on the customer's Purchase Order.
 - Letters of Authorization will not be kept on file at factory.

Access 3 CLIQ Required information:

- Mandatory: In addition to the above information Access 3 CLIQ systems require Time Zone and Daylight Savings information.

The ASSA ABLOY Group is the global leader in access solutions. Every day, we help billions of people experience a more open world.

ASSA ABLOY Opening Solutions leads the development within door openings and products for access solutions in homes, businesses and institutions. Our offering includes doors, frames, door and window hardware, locks, perimeter fencing, access control and service.



For additional information, contact your
ASSA ABLOY Door Security Solutions
sales consultant or visit www.corbinruswin.com.

In U.S.

Corbin Russwin
Architectural Hardware
225 Episcopal Road
Berlin, CT 06037
Phone: 800-543-3658
Fax: 800-447-6714
www.corbinruswin.com

In Canada

ASSA ABLOY Door
Security Solutions Canada
160 Four Valley Drive
Vaughan, Ontario
Canada L4K 4T9
Phone: 800-461-3007
Fax: 800-461-8989
www.assaabloydss.ca