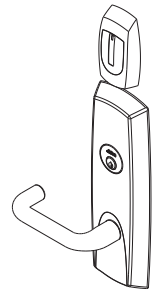


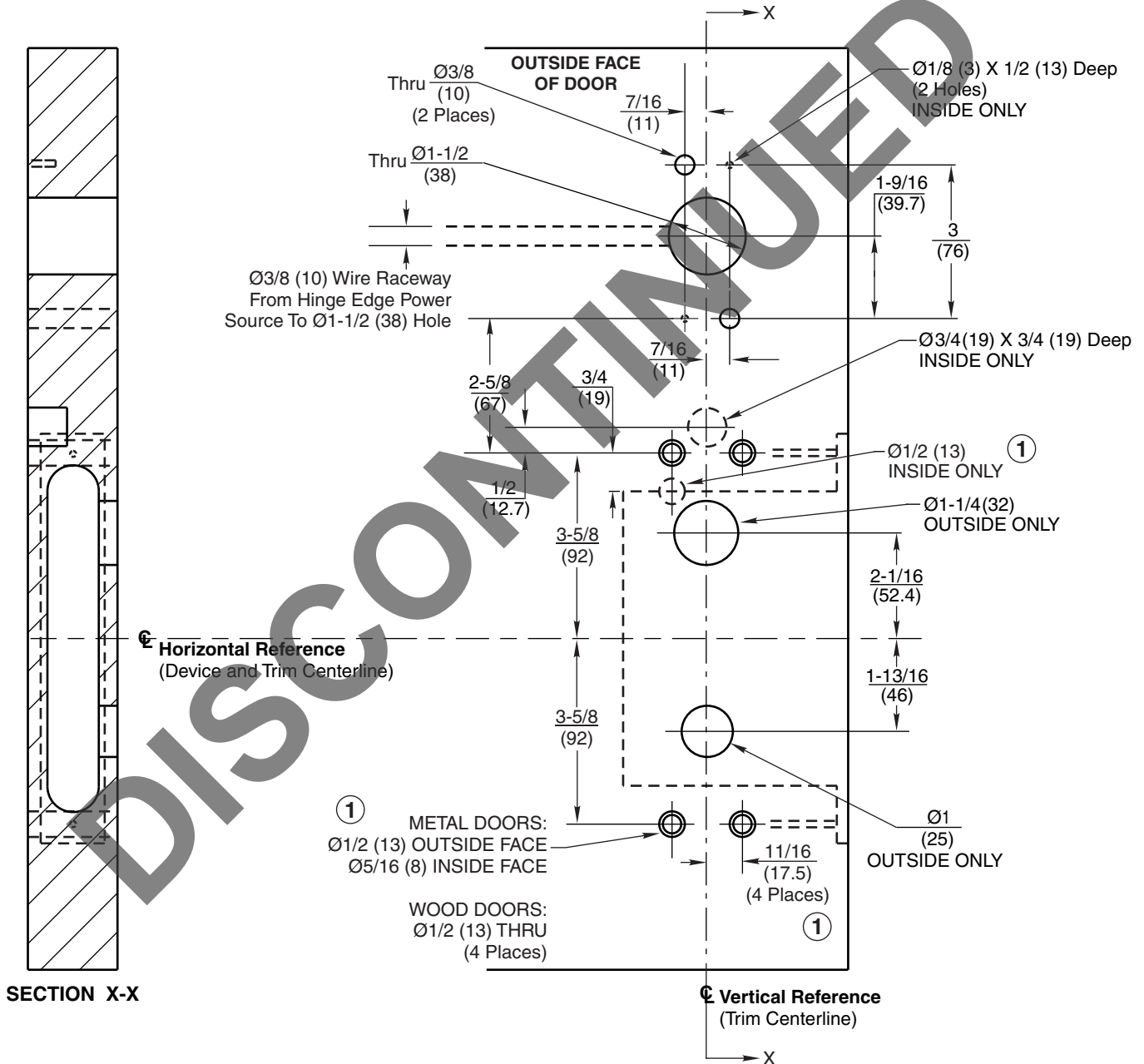
Notes:

1. This template is an addition to the device template. Locate centerlines using horizontal and vertical references on device template.
2. Dimensions are in inches (mm).
3. LHR door shown. (RHR opposite)
4. Provide adequate structural support to maintain door integrity during operation.
5. Prepare mounting holes when installing trim.
6. Dimensions given about a centerline are symmetrical.
7. Unspecified radius 1/8 (3.2) maximum.
8. Concealed Door Position Switch p/n: 708F989 is included with this product. Use and installation location to be specified by others. See SE LP10 installation instructions for details (FM385).



9M600 TCRNE Series

Note: Lever design prefix does not affect door prep.



**Access 600® TCRNE
 9M600 Series Trim
 for ED5600N Series Exit Devices
 Wood, Composite or Metal Door Preparation**



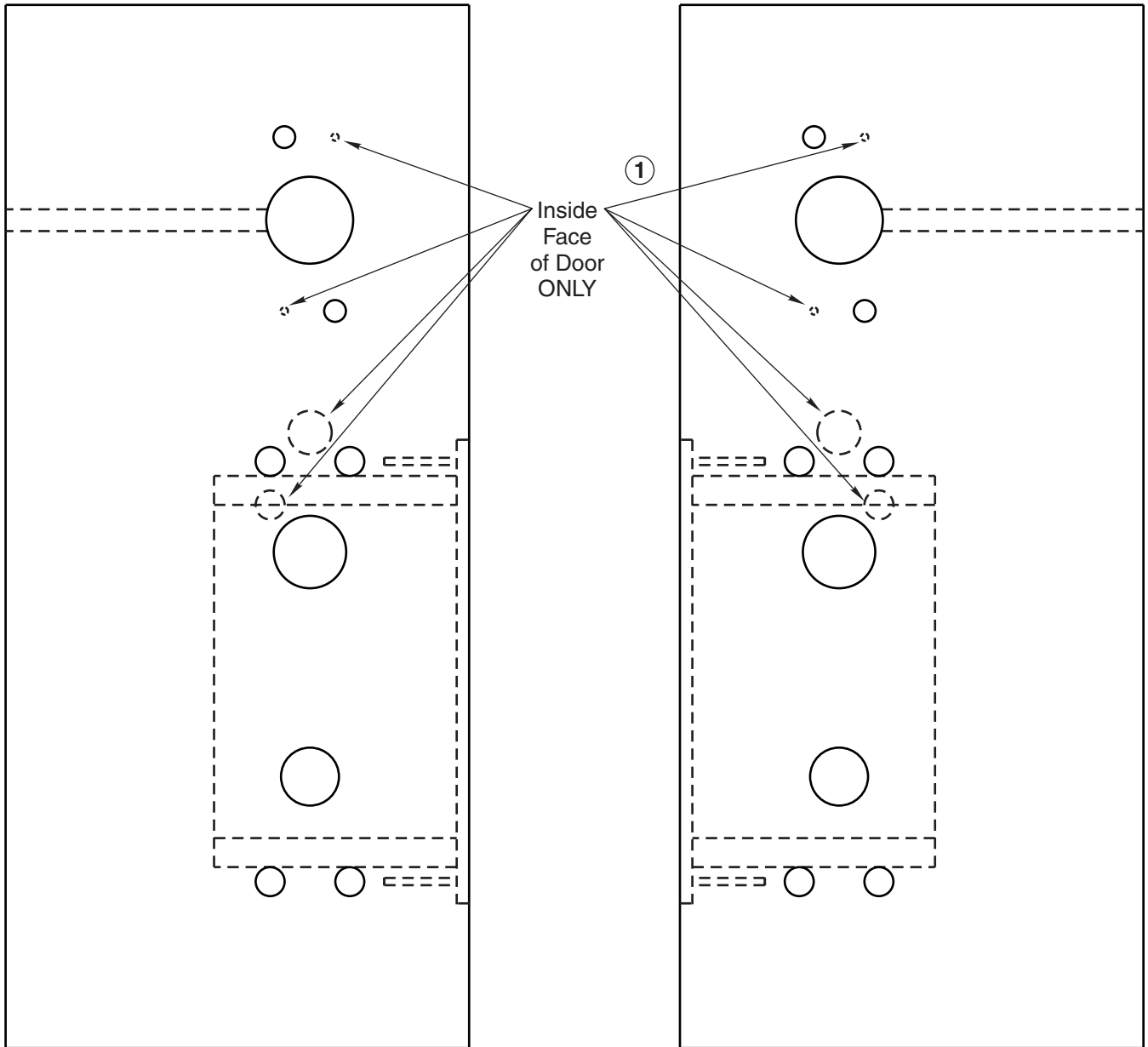
ASSA ABLOY

www.corbinrusswin.com

| | | |
|-----------------|----------|-------------------------|
| SUPERSEDES | T31166 | DO NOT SCALE DRAWING |
| TEMPLATE NUMBER | T31166-1 | SHEET 1 of 2 DATE 10-14 |

LHR Door

RHR Door



Access 600® TCRNE
9M600 Series Trim
for ED5600N Series Exit Devices
Wood, Composite or Metal Door Preparation



ASSA ABLOY

www.corbinrusswin.com

| | | |
|-----------------|----------|----------------------|
| SUPERSEDES | T31166 | DO NOT SCALE DRAWING |
| TEMPLATE NUMBER | T31166-1 | SHEET 2 of 2 |
| | | DATE 10-14 |