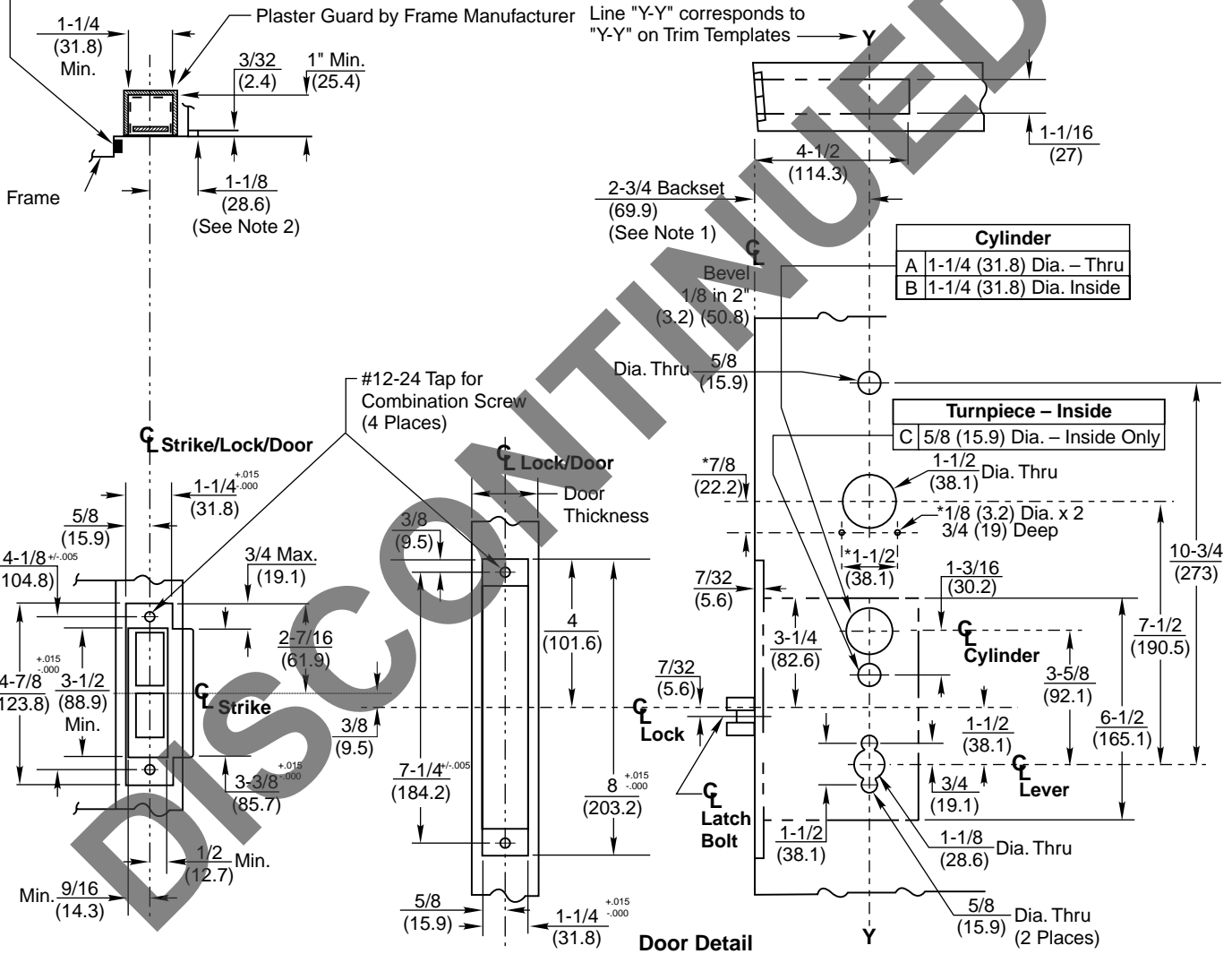


**Notes:**

1. Backset is measured from centerline of bevel which is centerpoint of door thickness.
2. 1-1/8 (28.6) strike lip suits frame for 1-3/4 (44.5) thick door, lip will vary for other door thicknesses.
3. Dimensions given in inches and (mm).
4. (\*) Outside. For Fire Door Only.
5. For Remote Power requirements see Sheet 2.

Series Function	Required Holes					
	A	B	C	D	E	
ML20803	●			●	●	w/o Turn Only
ML20805	●			●	●	w/o Turn Only
ML20810		●		●	●	w/o Turn & Cyl.
ML20830		●		●	●	w/o Turn & Cyl.
ML20833		●				w/o Turn & Cyl.
ML20834	●					w/o Turn Only
ML20835		●	●			w/o Cyl.
ML20836	●		●			w Turn & Cyl.
ML20860		●	●	●	●	w/o Cyl.
ML20863	●		●	●	●	w Turn & Cyl.
ML20880		●	●	●	●	w/o Cyl.
ML20885	●		●	●	●	w Turn & Cyl.

**CAUTION: DOOR & FRAME MANUFACTURERS**  
 When door gasketing or silencers are used, proper allowances must be made for strike location to maintain a common centerline with lock and door as shown so that bolt will freely enter strike.



FRAME DETAIL	
ANSI Strike	Description
236L72	Latch & Dead Bolt Holes
236L73	Latch Bolt Hole Only
And Optional Box 120F76	

Tolerances	
Inches	(mm)
.005	(.127)
.015	(.381)

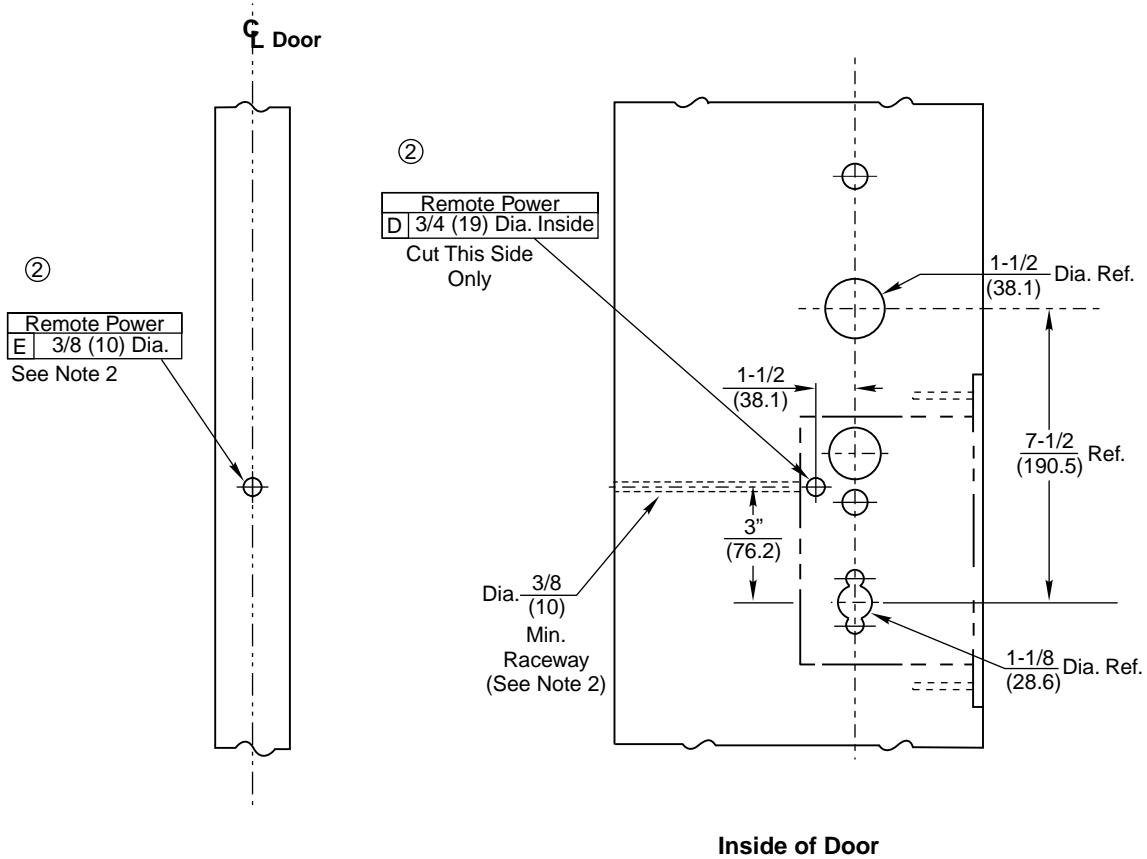
**ML20800 Series  
Mortise Lock**



## Remote Power Supply Door Details

**Notes:**

1. Dimensions given in inches and (mm).
2. Wire raceway must connect 3/4" (19) counterbore to the hinge edge power source.



**ML20800 Series  
Mortise Lock**



SUPERSEDES	T30989-1	DO NOT SCALE DRAWING
TEMPLATE NUMBER	T30989-2	SHEET 2 of 2 DATE 10-07