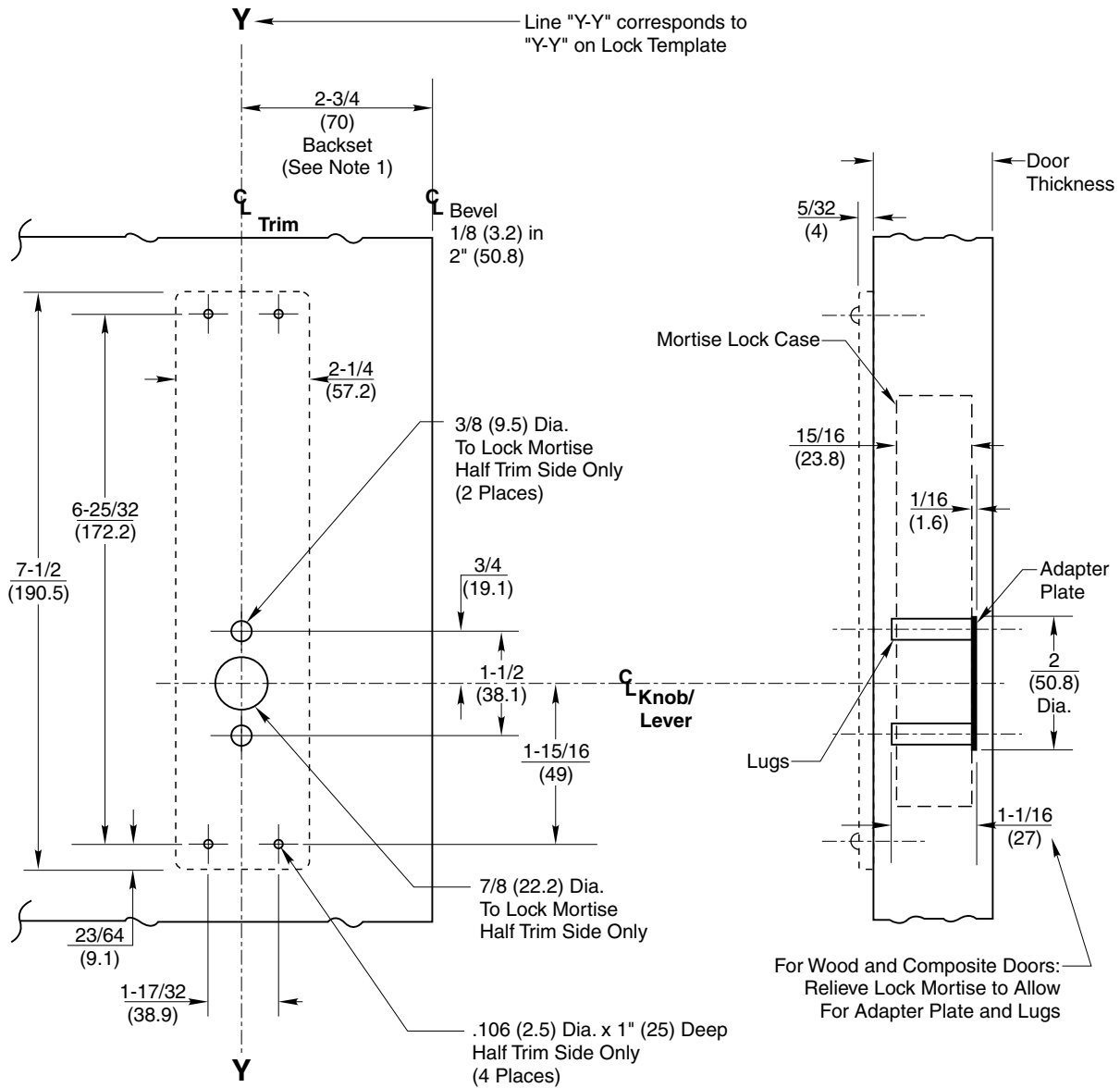


TEMPLATE CROSS REFERENCE

| Description | Template |
|-----------------------------------------|----------|
| ML2000, ML2200 Series Mortise Lock (HT) | T30607 |

Notes:

1. Backset is measured from centerline of bevel which is centerpoint of door thickness.
2. Refer to appropriate mortise lock template for cylinder and turnpiece preps when required.
3. Dimensions given in inches and (mm).



Trim Side

RESPONSIBILITY

Door and Frame Manufacturers are responsible for providing adequate construction or reinforcements for proper installation of hardware shown. All architectural builders hardware must be installed on properly reinforced doors and frames, regardless of the type, material, or method of construction.

ASN GZN PSN
 CSN LSN RSN
 DSN LWN RWN
 ESN NSN YZN

**Mortise Lock Escutcheon
 Half Working Trim**

⑥



ASSA ABLOY

www.corbinrusswin.com

| | | |
|-----------------|-----------------|----------------------|
| SUPERSEDES | T30549-5 | DO NOT SCALE DRAWING |
| TEMPLATE NUMBER | T30549-6 | DATE 11-18 |