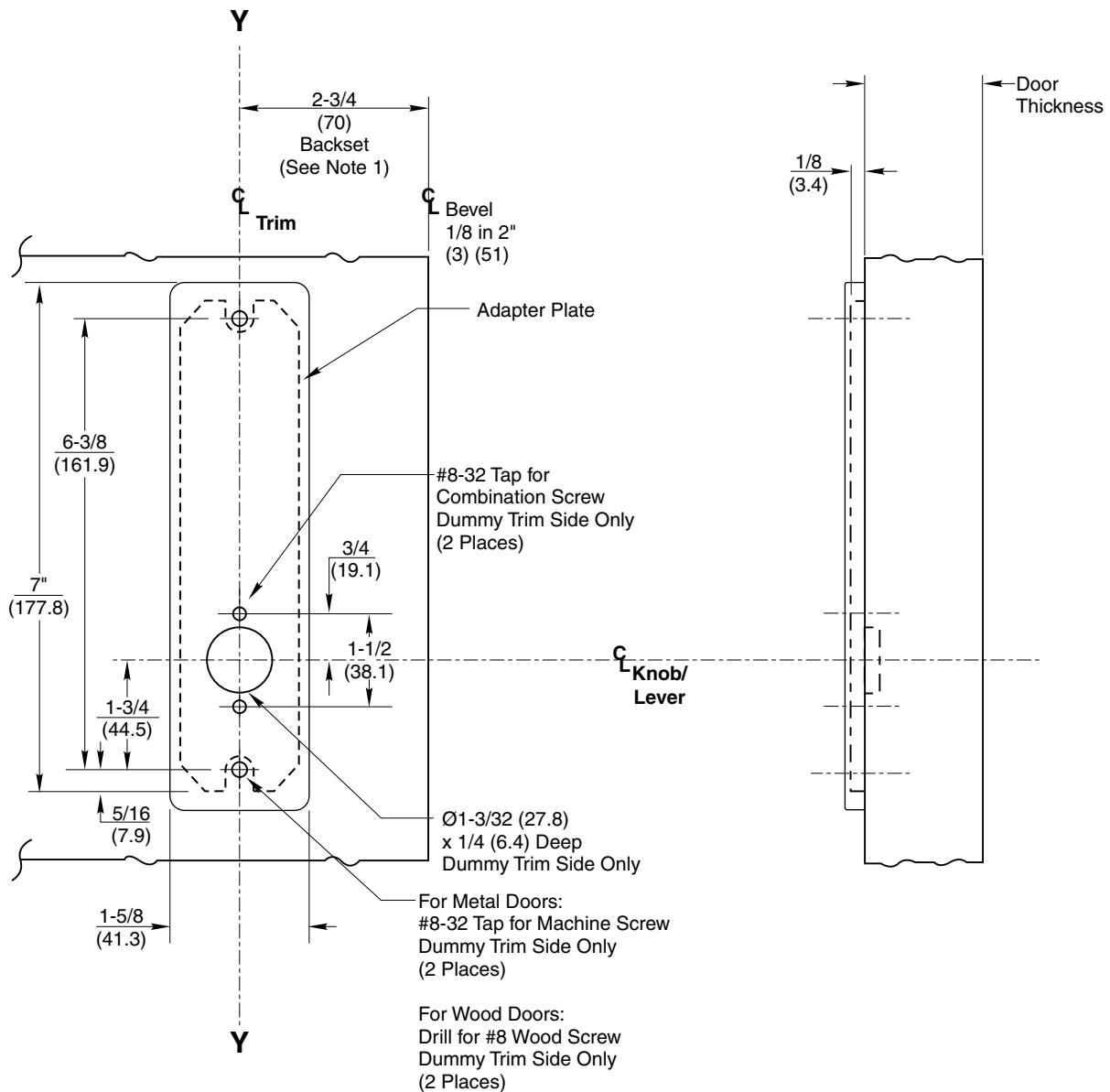


Notes:

1. Backset is measured from centerline of bevel which is centerpoint of door thickness.
2. Dimensions given in inches and (mm).
3. Full dummy trim same as shown except applied to both sides.

Half Dummy Trim Shown



RESPONSIBILITY

DOOR AND FRAME MANUFACTURERS ARE RESPONSIBLE FOR PROVIDING ADEQUATE CONSTRUCTION OR REINFORCEMENTS FOR PROPER INSTALLATION OF HARDWARE SHOWN. ALL ARCHITECTURAL BUILDERS HARDWARE MUST BE INSTALLED ON PROPERLY REINFORCED DOORS AND FRAMES, REGARDLESS OF TYPE, MATERIAL, OR METHOD OF CONSTRUCTION.

ASP GZP PSP
 CSP LSP RSP
 DSP LWP RWP
 ESP NSP YZP

②

**Mortise Lock Escutcheon
 Half and Full Dummy Trim**

**Corbin
 Russwin**
ASSA ABLOY

www.corbinrusswin.com

SUPERSEDES	T30557-1	DO NOT SCALE DRAWING
TEMPLATE NUMBER	T30557-2	DATE 11-18