



CK4800 Series

Standard-Duty Cylindrical Knob Locksets



Product Catalog

Experience a safer
and more open world

Applications

CK4800 Series



Table of Contents

Applications.....	2
Features.....	3
Functions.....	4
Trim Design.....	5
Latches.....	6
Strikes.....	7
Cylinders.....	8
How to Order.....	8
Options/Finishes.....	10
How to Specify.....	11

Applications

An outstanding combination of value and performance. Ideal for quality residential and light commercial buildings, such as:

- Fine homes
- Apartments
- Motels
- Offices

Advantages

- Variety of functions
- Precision manufactured mechanisms, zinc dichromated for corrosion resistance
- Stainless steel latchbolt for long life
- Adjustable latchbolts accommodates flat and beveled doors



Features

CK4800 Series

Features

Handing

Field reversible.

Door Thickness

1-3/8" (35mm) - 1-3/4" (44mm) standard.

Backset

2-3/4" (70mm) standard.

Optional: 2-3/8" (60mm); see How to Order, page 9.

Lock Chassis

Steel, zinc dichromated for corrosion resistance.

Front

Wrought brass, bronze, or stainless steel, 2-1/4" (57mm) x 1-1/8" (29mm) standard.

Accommodates flat doors and doors beveled 1/8" (3mm) in 2" (51mm).

Optional fronts available; see How to Order, page 9.

Latchbolt

Brass or stainless steel, 1/2" (13mm) throw.

Auxiliary Latchbolt

Deadlocking latchbolt prevents manipulation when door is closed.

Strike

Wrought brass, bronze, or stainless steel ANSI curved lip standard, 4-7/8" (124mm) x 1-1/4" (32mm) x 1-1/4" (32mm) lip to center.

Optional strikes, lip lengths and ANSI wrought strike box available; see How to Order, page 9.

Cylinder

Brass, 6-pin L4 keyway, 0-bitted standard.

Keying Features Available

Master keying

Construction master keying

Keys

Two nickel silver standard.

Warranty

One-year limited.

Certification/Compliance

ANSI/BHMA

Certified A156.2 Series 4000, Grade 2.



UL/ULC

All locks with listed for A label and lesser class single doors, 4' x 8'.

Letter F and UL symbol on latch front indicate listing.


Any retrofit or other field modification to a fire-rated opening can potentially impact the fire rating of the opening, and Corbin Russwin, Inc. makes no representations or warranties concerning what such impact may be in any specific situation. When retrofitting any portion of an existing fire-rated opening, or specifying and installing a new fire-rated opening, please consult with a code specialist or local code official (Authority Having Jurisdiction) to ensure compliance with all applicable codes and ratings.



Functions

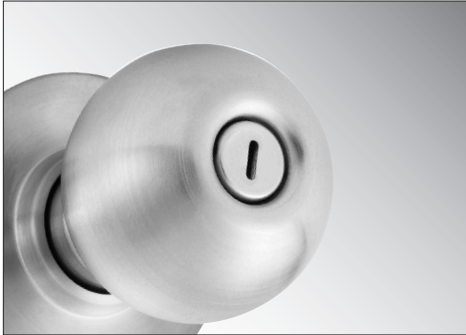
CK4800 Series

Outside	Inside	Series/ Function	Type	ANSI No.	Function Description
		CK4810	Passage or Closet	F75	<ul style="list-style-type: none"> Latchbolt by knob either side. Both knobs always free.
		CK4820	Privacy, Bedroom or Bathroom	F76A	<ul style="list-style-type: none"> Latchbolt by knob either side. Outside knob locked by push button. Outside knob unlocked by turning slotted button outside, by rotating inside knob, or by closing door. Inside knob always free.
		CK4851	Entrance or Office	F109	<ul style="list-style-type: none"> Deadlocking latchbolt by knob either side, except when turn button locks outside knob. Pushing turn button in locks outside knob, requiring use of key outside to unlock. Turning inside knob unlocks outside knob. Pushing in and turning button locks outside knob, requiring key at all times. Turning inside knob does not unlock outside knob until button is manually turned to unlocked position. Inside knob always free.
		CK4855	Classroom	F84	<ul style="list-style-type: none"> Deadlocking latchbolt by knob either side except when key outside locks outside knob. Outside knob unlocked by key outside. Inside knob always free.
		CK4857	Storeroom or Closet	F86	<ul style="list-style-type: none"> Deadlocking latchbolt by key in outside knob, or by rotating inside knob. Outside knob always rigid. Inside knob always free.
		CK4850	Half Dummy Trim	—	<ul style="list-style-type: none"> Knob acts as pull only; no operation. Knob is rigid.

 Indicates rigid knob.

Trim Designs

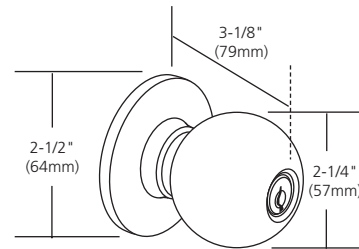
CK4800 Series



Global
Brass



GWC
Knob: Wrought
Rose: Wrought



Latches

CK4800 Series

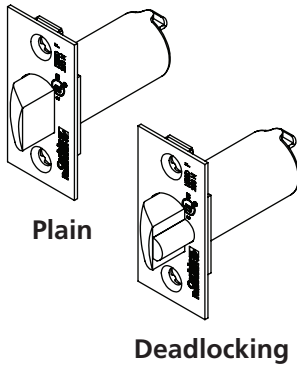
Latches

To order optional latchbolt with lockset, see How to Order, page 9.

To order latchbolt separately, specify Part No. x Finish (e.g. 881F470 x 613E).

Description	Series/Function	Part Number
2-3/4" (70mm) Backset	CK4810, CK4820	881F470
	CK4851, CK4855, CK4857	881F460
2-3/8" (60mm) Backset	CK4810, CK4820	881F490
	CK4851, CK4855, CK4857	881F480

Housing diameter 7/8" for all models. 1" diameter latch sleeve furnished with each latchbolt.



Strikes

ANSI Curved Lip (standard)

Brass or stainless steel.

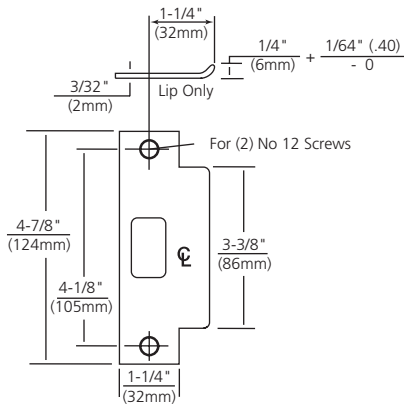
4-7/8" (124mm) x 1-1/4" (32mm) x 1-1/4" (32mm) lip to center.

Optional lip lengths:

1" (25mm), 1-1/8" (29mm), 1-3/8" (35mm), 1-1/2" (38mm), 1-3/4" (44mm), 2" (51mm), 2-1/4" (57mm), 2-1/2" (64mm), 2-3/4" (70mm), 3" (76mm).

To order with lockset, see Quick Codes on page 10.

To order separately, specify 217L13 x Lip Length x Finish.



Curved Lip "T" Strike

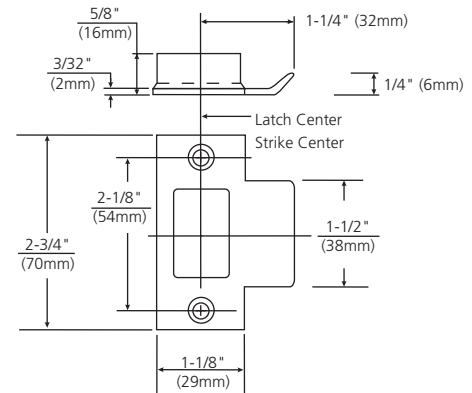
Brass.

2-3/4" (70mm) x 1-1/8" (29mm) x 1-1/4" (32mm) lip to center.

Optional lip lengths: 1" (25mm), 1-1/8" (29mm), 1-3/8" (35mm), 1-1/2" (38mm), 1-3/4" (44mm), 2" (51mm), 2-1/4" (57mm), 2-1/2" (64mm), 2-3/4" (70mm), 3" (76mm).

To order with lockset, see Quick Codes on page 10.

To order separately, specify 586L19 x Lip Length x Finish.

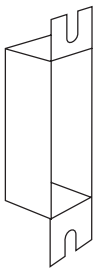


ANSI Wrought Strike Box

Used with ANSI 4-7/8" (124mm) strike .

To order with lockset, specify Quick Code M17.

To order separately, specify 120F768.



Full Lip Strike

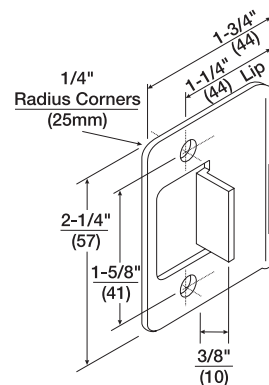
Brass or stainless steel.

2-1/4" x 1-3/4" x 1-1/4" lip to center.

No optional lip lengths.

To order separately specify 680L50M020 x Finish.

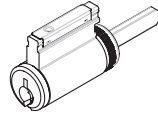
Anti-rattle tab.



Cylinders

CK4800 Series

Corbin Russwin Cylinders



Security Type	Pins	Standard Cylinder
Conventional	6-Pin	CR2000-034 (standard)
Security	6-Pin	CR2010-034
Pyramid - High Security	7-Pin	CR2020-034
Pyramid - Security	7-Pin	CR2027-034
Access 3 [®] - Patented (AP)	6-Pin	CR2500-034
Access 3 [®] - Security (AS)	6-Pin	CR2600-034
Access 3 [®] - High Security (AHS)	6-Pin	CR2700-034

Plug diameter for standard cylinders is .509, .510 for Access 3[®], .552 for security cylinders and .496 for Pyramid cylinders. Cylinders are brass and come with 2 nickel silver keys. Finishes for all cylinders and cores include 606 or 626. To order cylinders separately, specify Part No. x Keyway x Finish (e.g., CR2000-034 x L4 x 626).

How to Order

CK4800 Series

Ordering Examples

Stock Order

Quantity	Series/Function	Trim	Finish	Hand
100	CK4851	GWC	626	RHR

Where to find ordering information and quick codes

Series/Function	Page 4
Trim Designs	Page 5
Finish	Page 10
Handing	Page 10
Door Thickness	Page 10
Strike	Page 10
Backset	Page 10
Miscellaneous Options	Page 10
Cylinder and Keying	Page 10

Contract / Detailed Order

Quantity	Series/Function	Trim	Finish	Hand	Optional Strike	Backset	Misc. Options	Keying	Keyset
24	CK4851	GWC	626	RHR	SA134	B238	M17	VKC1	AA1

Options/Finishes

CK4800 Series

Cylinder and Keying

Description	Specify
Conventional 6-pin	(standard)
Less Cylinder(s)	LC
Security	
Security	HS
Access 3®	
Access 3 Patented Fixed Core	AP
Access 3 Security Fixed Core	AS
Access 3 High Security Fixed Core	AHS
Pyramid	
Pyramid Security Fixed Core	PS
Pyramid High Security Fixed Core	PHS
Keying and Keys	
0-bitted with 2 blank keys	(standard)
Keyed Random	KR
Construction Master Keyed	CMK
2 keys per lock	(standard)
More than 2 keys	KY# (e.g., KY6)
Visual Key Control (VKC)	
No bitting or keyset stamping on keys	VKC0
Keys only	VKC1
Cylinders and keys (not for AS, AHS, HS or PHS)	VKC2
Cylinders only (not for AS, AHS, HS or PHS)	VKC3
Concealed Key Control (CKC)	
CKC cylinders with VKC keys	CKC2
CKC cylinders only (not for AS, AHS or PHS)	CKC3

Backset

Description	Specify
2-3/8" (60mm)	B238
2-3/4" (70mm)	(standard)

Finishes

Description	Specify
ANSI/BHMA 605 (US3) Bright Brass	605
ANSI/BHMA 613E (US10BE) Dark Oxidized Satin Bronze - equivalent	613E
ANSI/BHMA 626 (US26D) Satin Chromium Plated	626

Strikes

ANSI Lip to Center	ANSI Curved Lip Specify	Curved Lip Box Specify	Full Lip Specify
1" (25mm)	SA100	SC100	N/A
1-1/8" (29mm)	SA118	SC118	N/A
1-1/4" (32mm)	SA114 (standard)	SC114	SF114
1-3/8" (35mm)	SA138	SC138	N/A
1-1/2" (38mm)	SA112	SC112	N/A
1-3/4" (44mm)	SA134	SC134	N/A
2" (51mm)	SA200	SC200	N/A
2-1/4" (57mm)	SA214	SC214	N/A
2-1/2" (64mm)	SA212	SC212	N/A
2-3/4" (70mm)	SA234	SC234	N/A
3" (76mm)	SA300	SC300	N/A

Handing

Description	Specify
Right Hand	RH
Left Hand	LH
Right Hand Reverse	RHR
Left Hand Reverse	LHR

Door Thickness

Door Thickness	Specify
1-3/8" (35mm) - 1-3/4" (44mm)	(standard)

Miscellaneous Options

Description	Specify
ANSI wrought strike box	M17

How to Specify

CK4800 Series

Suggested Specification

All locksets shall be CK4800 Series Standard Duty Cylindrical Knob Lockets as manufactured by Corbin Russwin Architectural Hardware.

Locks shall have a steel chassis with zinc dichromate plated parts for rust resistance.

All knobs and roses shall be of reinforced construction. All inside and outside knobs shall be of the same profile and projection for aesthetic continuity.

All locksets and latchbolts shall be field reversible for ease of installation.

The latchbolt shall be adjustable to accommodate flat or beveled doors, shall have a 1/2" throw and shall include an auxiliary deadlocking feature to inhibit manipulation when door is closed.

All locksets with cylinders shall be furnished with 2 nickel silver keys. All cylinder plugs shall be furnished with 6-pin chambers for expanded master keying capabilities.

All locksets shall be listed by Underwriters Laboratories for A label and lesser class single doors, 4' x 8'.

Certification:

UL-cUL 3-Hour Fire Rating

ANSI/BHMA A156.2 Series 4000, Grade 2

All locks, trim and cylinders shall be from one manufacturer.

The ASSA ABLOY Group is the global leader in access solutions. Every day, we help billions of people experience a more open world.

ASSA ABLOY Opening Solutions leads the development within door openings and products for access solutions in homes, businesses and institutions. Our offering includes doors, frames, door and window hardware, mechanical and smart locks, access control and service.



For additional information, contact your
ASSA ABLOY Door Security Solutions
sales consultant or visit www.corbinrusswin.com.

In U.S.

Corbin Russwin
Architectural Hardware
225 Episcopal Road
Berlin, CT 06037
Phone: 800-543-3658
Fax: 800-447-6714
www.corbinrusswin.com

In Canada

ASSA ABLOY Door
Security Solutions Canada
160 Four Valley Drive
Vaughan, Ontario
Canada L4K 4T9
Phone: 800-461-3007
Fax: 800-461-8989
www.assaabloydss.ca