

# Condensed Catalog

Meeting all  
your architectural  
hardware needs



**Since 1839, Corbin Russwin** has been a leader in the door hardware industry offering a wide range of safety and security architectural hardware solutions. From the beginning, customers have been our focus. First and foremost, our customers insist on high-quality, durable hardware to secure their institutional facilities. To meet this need, Corbin Russwin offers a broad line of premium products - some specialized for specific environments - that perform reliably in buildings all over the United States and Canada, day after day. Our bored and mortise locks, exit devices, key systems, electronic access control products and door closers all provide the security required for high-use, high-abuse environments like healthcare, K-12, university and government facilities. In fact, Corbin Russwin is the first and only choice of many architects and facility managers when selecting and specifying hardware.





# Decorative Hardware



Corbin Russwin's decorative hardware line opens an expansive world of possibilities for design excellence. Designers and architects will appreciate this collection of door trim that creates a cohesive overall look without compromising on quality or functionality. To mix and match trim styles and finishes visit [selector.corbinrusswin.com](http://selector.corbinrusswin.com)

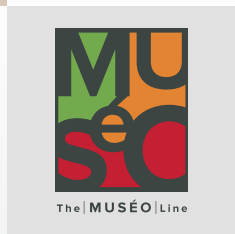


## An Artful Approach To Every Opening

The Muséo® Line is ideal for commercial and institutional projects such as offices, campuses, museums and hotels as well as large residential projects such as condominium complexes.

Designed for use with a full complement of Corbin Russwin commercial door hardware, Muséo trim coordinates seamlessly with our exit devices, tubular locks, mortise locks and access control hardware, so specification is simple and unified.

**For more information visit [corbinrusswinMUSEO.com](http://corbinrusswinMUSEO.com)**



## the good design studio

With ASSA ABLOY, it's not just about good looking door hardware...it's about the entire opening. Beautiful wood doors and frames, pulls, hinges, coat hooks, door stops and of course...locks, access control and exit devices with superbly stylized levers.

ASSA ABLOY Group brands offer suited door openings in the epic pursuit of Good Design and the Total Aesthetic Opening.

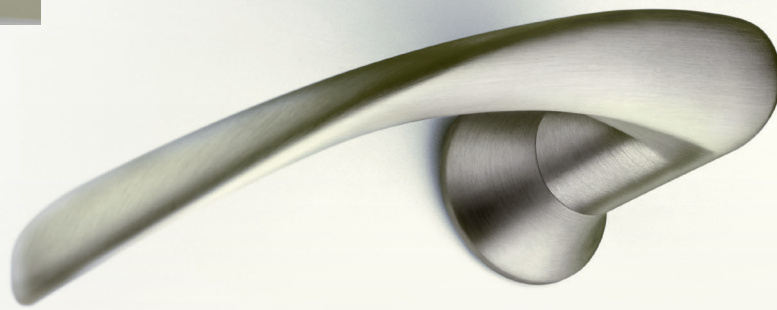
Visit [www.thegooddesignstudio.com](http://www.thegooddesignstudio.com) to learn more.

# Decorative Hardware



## Inspire™ To Create Beautiful Openings

Is door hardware obvious? Sometimes. But subtlety is key to good design. Choose a stunning Muséo® lever and combine it with Inspire trim for a subtle, refined look. Offered with most Muséo levers, this exquisite trim is compatible with TL3700 tubular locks, ML2000 mortise locks and Access 600™ RNE1 mortise access control locks.



## Distinctively Styled Lever Trims

The Vineyard™ Collection is made up of choice materials, classical lines, curves and lush finishes.

These levers blend beauty with security and are ideal for a variety of settings, from executive office areas to exclusive retail shops, or upscale theatres. Offered in multiple architectural finishes, the Vineyard Collection can be used with commercial-grade mortise and access control locks and exit devices.





# Access Control



## Selecting the Right Access Control Solution

		Offline		WiFi			Aperio Wireless	Integrated Wiegand		Power Over Ethernet (PoE)		
Product		Access 700® PAC1	Access 800® AC2	Access 700® PW11	Access 800® W11	IN120	IN100	Access 600® RNE1	SE LP10	Access 700® PIP1	Access 800® IP1	IN220
Credential	Magnetic Stripe	✓		✓						✓		
	Prox Only	✓	✓		✓			✓			✓	
	iCLASS Only				✓			✓			✓	
	multiCLASS SE®			✓		✓	✓		✓	✓		✓
	Keypad	✓	✓	✓	✓					✓	✓	
	Mobile Devices (iOS or Android)			✓		✓	✓ Android only		✓	✓		✓
Lock Type	Mortise Lock	✓	✓	✓	✓	✓	✓	✓	✓	✓	✓	✓
	Cylindrical Lock	✓	✓	✓	✓	✓	✓	✓	✓	✓	✓	✓
	Exit Device	✓	✓	✓	✓		✓	✓	✓	✓	✓	✓

All access control products, except the Access 800 AC2, must be sold through ASSA ABLOY Authorized Channel Partners and installed by ASSA ABLOY Certified Integrators. Detailed product information, including catalogs, pricing, and instructions, is available in the Partner Area on [IntelligentOpenings.com](http://IntelligentOpenings.com).

# Access Control



## Offline Access Control



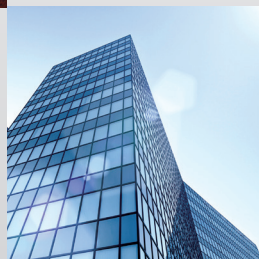
### Access 700 PAC1

The Access 700® PAC1 lockset with PERSONA Campus™ software is an intelligent, One Card solution for economical and effective campus access control. The ANSI/BHMA Grade 1 lockset is available in mortise lock, cylindrical lock, and exit device configurations with keypad and magnetic stripe, or magnetic stripe only. PERSONA Campus™ software technology provides seamless database integration and software interfacing with enterprise, transaction and housing systems.



### Access 800 AC2

Access 800 AC2 offline locks offer an economical solution for customized access control backed by ANSI/BHMA Grade 1 hardware. Available in mortise lock, cylindrical lock, and exit device configurations, this stand-alone access control product can be programmed quickly and easily using a data transfer device. Ideal for classrooms, the Access 800 AC2 offers the ability to lock the door quickly with an RF fob from almost anywhere inside the room.





# Access Control



## Intelligent WiFi Access Control



### ACCESS 700 PWI1

The Access 700® PWI1 lockset is an intelligent WiFi lockset offering comprehensive access control for campus housing and facilities. Ideal for expanding access control throughout campus, the Access 700 PWI1 uses 802.11b/g/n WiFi infrastructure to significantly reduce hardware and labor costs. Combined with ASSA ABLOY's PERSONA Campus™ software or with approved third party software, Access 700 PWI1 locks integrate seamlessly into transactional and housing systems, providing comprehensive, reliable access control for the campus environment.

Available in mortise lock, cylindrical lock, and exit device configurations, it combines magstripe, PIN code, and HID Global's multiCLASS SE® technologies for an easy, affordable migration path to higher security credentials and mobile access.

### ACCESS 800 WI1

The Access 800® WI1 is an intelligent WiFi solution that is ideal for adding access control to areas of a building that would be too difficult or costly to wire. The Access 800 leverages the facility's 802.11b/g/n WiFi infrastructure to connect to the access control system, significantly reducing installation time and cost compared to traditional access control. Available in mortise lock, cylindrical lock, and exit device configurations, its open architecture design eases integration with any access control system.



### IN120

The Corbin Russwin IN120 pairs a sleek, attractive design with the latest in access control technology to address the evolving needs of today's facilities. Available in mortise lock and cylindrical lock configurations, this innovative WiFi lock makes it easy and affordable to expand your access control system by utilizing your existing WiFi infrastructure. Featuring multiCLASS SE® technology from HID Global, it provides heightened security as well as simultaneous support for multiple credential types and HID Mobile Access® powered by Seos®.



# Access Control



## Aperio® Wireless



### IN100 Aperio® Wireless Lock

The IN100 Aperio® wireless lock offers the convenience and flexibility of Aperio® wireless technology with the real-time communication of online access control. EAC initiated lock/unlock can be accomplished in less than 10 seconds. The IN100 also provides simultaneous support for HID Mobile Access® and multiple credential types, including smart cards and Prox. Featuring integrated ANSI/BHMA Grade 1 hardware, the IN100 is available in cylindrical and mortise lock and exit device configurations, with your choice of black or white reader and a broad range of finishes and levers.



## Integrated Wiegand Access Control

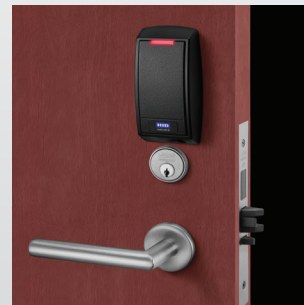
### ACCESS 600 RNE1

Designed with aesthetics in mind, the Access 600® RNE1 integrates all standard access control components into a small, streamlined lock, offering the perfect balance of style and security. The Access 600 RNE1 features Grade 1 Corbin Russwin hardware in mortise lock, cylindrical lock and exit device configurations. This wide range of quality hardware, customized monitoring options and easy system expansion define the advantages of the Access 600.



### SE LP10

The Corbin Russwin SE LP10 combines the ease and convenience of Integrated Wiegand technology with the heightened security and flexibility of multiCLASS SE® technology from HID Global®. Available in mortise lock, cylindrical lock, and exit device configurations, this integrated lock offers an ideal solution for mixed credential environments and provides an easy transition to different credential technologies and mobile access.





# Access Control



## Power over Ethernet (PoE) Access Control



### ACCESS 700 PIP1

The Access 700® PIP1 intelligent Power over Ethernet (PoE) lockset offers online access control, using magstripe, PIN code, and HID Global's multiCLASS SE® technologies for customized access to campus facilities. Available in mortise lock, cylindrical lock, and exit device configurations, the PIP1 offers an ideal solution for forward-thinking campuses looking for a migration path to higher security credentials and mobile access.

Using the facility's Ethernet network, the Access 700 PIP1 provides full online access control with standard network cabling and can be combined with ASSA ABLOY's PERSONA Campus™ software or approved third party software for seamless integration into transactional and housing systems.

### Access 800 IP1

The Access 800® IP1 is an intelligent Power over Ethernet (PoE) solution that integrates all standard access control components – including ANSI/BHMA Grade 1 Corbin Russwin hardware, contactless reader, door status monitoring, and controller – into a single device.

The Access 800 IP1 PoE lock uses a single Ethernet cable for both power and data, eliminating the need for any additional power supply or electrical wiring. Available in mortise lock, cylindrical lock, and exit device configurations, it uses existing IEEE 802.3af PoE infrastructure to streamline the installation process, reduce costs, enable real-time communication, and minimize power consumption.

### IN220

The IN220 combines superior aesthetics with the energy efficiency and streamlined architecture of Power-over-Ethernet (PoE) access control. PoE-enabled access control allows facilities to leverage existing network infrastructure for enhanced security and easier, more cost-effective installations. Featuring multiCLASS SE® technology from HID Global®, it supports multiple credential types, including mobile devices, for a future-proof solution that is convenient and secure. IN220 is available in cylindrical and mortise lock, as well as exit device configurations, with your choice of black or white reader and a broad range of finishes and levers.



# Cylindrical Locksets



## Selecting the Right Cylindrical Lock Solution

	CL3100 Series	CL3300 Series	CL3500 Series	CL3800 Series
<b>ANSI/BHMA A156.2 Certified</b>	Grade 1	Grade 1	Grade 1	Grade 2
<b>UL-cUL Listed (3 Hour)</b>	✓	✓	✓	✓
<b>Warranty</b>	10 Years	7 Years	7 Years	5 Years
<b>Windstorm Certified</b>	✓	✓	✓	✓
<b>Door Thickness</b>	1 3/4" - 2 1/4"	1 3/4" - 2 1/4"	1 3/8" - 1 3/4"	1 3/8" - 2 1/4"
<b>Through-bolts</b>		✓	✓	✓
<b>Backset</b>	2 3/4", 3 3/4", 5"	2 3/4", 3 3/4", 5"	2 3/8", 2 3/4", 3 3/4", 5"	2 3/8", 2 3/4", 3 3/4", 5"
<b>Field Reversible Handing</b>	✓	✓	✓	✓
<b>Electrified Functions</b>		2		
<b>Electrified Options (Request to Exit)</b>		✓		
<b>Latchbolt Throw</b>	1/2", 3/4" Optional	1/2", 3/4" Optional	1/2"	1/2"
<b>Number of Mechanical Functions</b>	18	24	11	18
<b>Number of Finishes</b>	12	13	13	12
<b>Lever Designs</b>	3	4	3	3
<b>Free Wheeling Levers</b>		✓	✓	✓
<b>Other Manufacturer Keyways</b>	✓	✓	✓	✓
<b>Security or Patented Keying</b>	✓	✓	✓	✓
<b>SFIC (Levers)</b>	✓	✓	✓	✓
<b>Antimicrobial Protection Available</b>	✓	✓	✓	✓



# Cylindrical Locksets



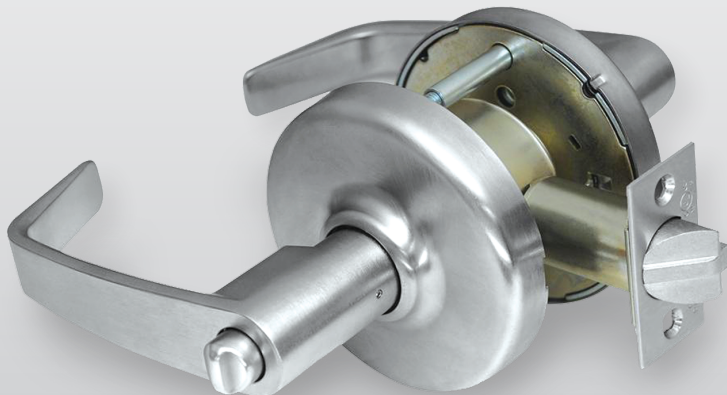
## CL3100 Series Vandal Resistant Lockset

The CL3100 Series is an ANSI/BHMA Grade 1 lever lockset manufactured with the highest quality materials to ensure strength, durability, and quiet operation. Available in all standard architectural finishes, the CL3100 Series subtly complements any high-use commercial, industrial and institutional application. Plus, designed to withstand abusive environments, the CL3100 Series features our unique torque-resistant T-Zone construction and provides strength and durability far exceeding the ANSI/BHMA Grade 1 standards.



## CL3300 Series Extra Heavy-Duty Cylindrical Lockset

This ANSI/BHMA Grade 1 CL3300 Series lockset provides the safety and security you expect, with the added benefit of a pleasing design. Plus, our out-of-the-box and onto-the-door user-friendly packaging makes installation as easy as A-B-C.



CL3800 Series  
Standard Duty Lockset

# Mortise Locksets



## Selecting the Right Mortise Lock Solution

		ML2000 Series	ML20900 Series
	ANSI/BHMA A156.13 Certified Operational Grade 1	✓	✓
	ANSI/BHMA A156.13 Certified Security Grade 1	✓	✓
	UL-cUL Listed (3 Hour)	✓	✓
	Warranty	10 Years	10 Years
	Windstorm Certified	✓	✓
	Door Thickness	1 3/8" - 4"	1 3/8" - 4"
	Hub Material	Steel	Steel
	Spindle Size	5/16"	5/16"
	Through Connect	✓	✓
	Field Reversible Handing	✓	✓
	Quick Change Hand/Locking	✓	✓
	Through-Bolt Trim	✓	✓
	Electrified Functions	Yes (18)	8
	Electrified Options	✓	✓
	Deadbolt	Throw	1"
Material		Stainless Steel	Stainless Steel
Latchbolt	Throw	3/4"	3/4"
	Material	Stainless Steel	Stainless Steel
	2pc. Anti Friction	✓	✓
	Number of Mechanical Functions	41	
	Number of Finishes	13	13
	Lever Designs	8 Standard	8 Standard
	Knob Designs	2 Standard 1 Anti-Harm	3 Standard 1 Anti-Harm
	Decorative Designs	Mused® & Vineyard™	Mused® & Vineyard™
	Security or Patented Keying	✓	✓

# Mortise Locksets



## ML2000 Series

The ML2000 Series is an ANSI/BHMA Grade 1 mortise lock designed to meet the rigors of high-traffic commercial, institutional, industrial and government applications. Constructed of heavy-gauge steel, the lockbody features our patented Quick Reversible latchbolt, and a 1" stainless steel deadbolt. A wide variety of trim designs and functions add to the ML2000's versatility and reliability.



## ML20900 ECL Series

Combine simplicity and access control with the Corbin Russwin ML20900 ECL Series electrically controlled mortise lock. Utilizing the proven ML2000 Series mortise lockset with the patented Quick Reversible latchbolt, the ML20900 Series provides remote locking and unlocking. The electrified lock can be installed in a standard mortise prep with slight modification by the door manufacturer.



### Featuring EcoFlex® technology, the ML20900 Series:

- Features an innovative actuator design that provides superior reliability
- Operates from 12-24VDC, offering greater flexibility in system design
- Is field configurable to fail-safe or fail secure
- Reduces energy consumption up to 96%, as certified by GreenCircle





# Exit Devices



## Selecting the Right Exit Device Solution

		ED3000 Series	ED4000 Series	ED5000 Series	ED8000 Series
Standards	ANSI/BHMA A156.3 Certified Grade 1	✓	✓	✓	✓
	Panic Listed & UL-cUL Fire Listing Available	✓	✓	✓	✓
	Windstorm Certified	✓	✓	✓	✓
	LEED Information Available	✓	✓	✓	
Physical Options	Mechanical Functions	12	12	14 & 4 Electrical	3
	Base Metals on Finished Parts	Stainless Steel, Brass & Bronze	Stainless Steel, Brass & Bronze	Stainless Steel, Brass & Bronze	Wrought Steel
	Lever Designs Available	8	8	19	12
	Pull & Thumb Piece Trim	8	8	6	1
	Freewheeling	✓	✓	✓	✓
	Anti-Vandal Pull Plates	✓	✓	✓	
	Standard Finishes	13	13	15	3 - device; 13 - trim
	Antimicrobial Protection Available	✓	✓	✓	✓
Mechanical Features	Mechanical Warranty	1 Year	5 Year	5 Year	1 Year
	Deadlocking/Guarded Latch	✓	✓	✓	
	Cylinder Dogging	Optional	Optional	Optional	
	Stock Rail Sizes	3	3	3	

# Exit Devices



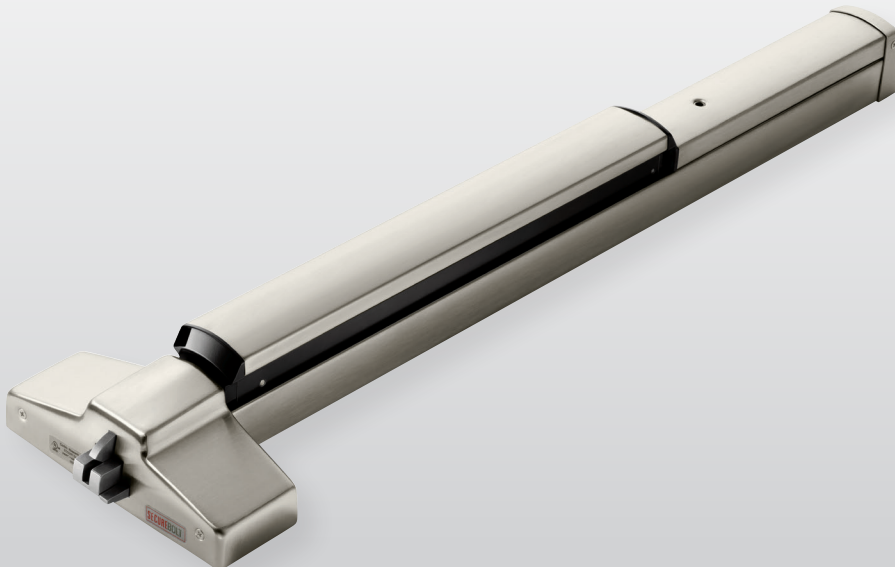
## ED4000 Series - Narrow Stile

Designed for applications on narrow stile full glass, aluminum, and metal doors in high-use and high-abuse situations, the ED4000 Series pushpad device can be teamed with a variety of Corbin Russwin trims to provide desired functions, styles, and finishes in new construction sites and renovations.



## ED5000 Series - Wide Stile

ED5000 Series pushpad exit devices are ideal for environments that require durable and attractive security solutions that will last the life of the building. Available in rim, mortise, surface vertical rod, and concealed vertical rod configurations, these exit devices exceed ANSI/BHMA Grade 1 requirements for cycle and strength, and are aesthetically pleasing, and are offered in a full range of trim designs.



# Multi-Point Locking Systems



## Selecting the Right Multi-Point Lock Solution

		FE5400S Series	MP9800 Series	FE6600 Series	FE6700 Series
Standards	ANSI/BHMA A156.3 Certified Grade 1	✓		✓	✓
	UL-cUL Fire Listing Available	✓	✓	✓	
	Windstorm Certified	FEMA 361; ICC 500	Hurricane Rated - Florida Building Code (FBC)	Tornado Rated - FEMA P-320 (2014); FEMA P-361 (2015); ICC 500 (2014)	FEMA P-361 (2015); ICC 500 (2014)
	LEED Information Available	✓	✓	✓	✓
Physical Options	Mechanical Functions	4	9	7	3
	Base Metals on Finished Parts	Steel, Stainless Steel, Brass	Steel, Stainless Steel, Brass	Steel, Stainless Steel, Brass	Steel, Stainless Steel, Brass
	Lever Designs Available	12	12	56	12
	Freewheeling	✓	✓	✓	✓
	Standard Finishes	15	15	14	15
	Antimicrobial Protection Available	✓	✓	✓	✓
Mechanical Features	Mechanical Warranty	7 Year	7 Year	7 Year	7 Year
	Cylinders Supplied Standard			✓	✓



# Multi-Point Locking Systems



## MP9800 Series Multi-Point Lock

The MP9800 Series multi-point lock is an ideal solution for applications where additional security and convenience is needed, but exit devices are not required. Available for use on multiple door types, with a broad range of options including access control, its heavy duty construction provides the durability and reliable operation that is perfect for any type of facility.

## FE6600 Series Door Lock

The FE6600 Series helps secure community shelters and safe rooms by withstanding tornado wind speeds and flying debris. Available in multiple function and trim combinations, the FE6600 Series offers the flexibility needed to accommodate a full range of door opening solutions including electronic access control with the reliability and durability needed for extreme conditions. Its unique center case adjustability feature simplifies installation and device adjustment.

- **Windstorm certified**



## FE6700 Series Shutter Lock

The Corbin Russwin FE6700 Series is a robust three-point locking system engineered to fortify community shelter window openings from extreme wind speeds and flying debris. Extra-heavy duty steel components secure the shutter to the frame. UL-cUL approved, the FE6700 is ideal for FEMA 361 and ICC 500 applications.

- **Windstorm certified**



# Door Closers



## Selecting the Right Door Closer Solution

	DC5000 Series	DC6000 Series	DC8000 Series
ANSI/BHMA A156.4, Grade 1		✓	✓
UL-cUL Listed	✓	✓	✓
Cycles (witnessed and approved by UL-cUL)		25 Million	25 Million
ADA Compliant	✓	✓	✓
Cam Action Design	✓		
Rack and Pinion		✓	✓
Cast Aluminum Body	✓		
Cast Iron Body		✓	✓
Warranty	10 Years	25 Years	25 Years
Multi-Sized Spring Power 1-6	✓	Multi-Sized or Sized Units Available	✓
Closer Projection	2 - 5/8"	2 - 3/4"	2 - 1/4"
Recommended Door Weight - 250 lbs	✓	✓	✓
Available Finishes	6	13	13
SNB (optional)	✓	✓	✓
Heavy Duty Arms		9	9
Track Standard	✓		
Piston Diameter	1 - 1/2"	1 - 3/8"	1 - 1/2"

# Door Closers



## DC5000 Series - Cam Action

The DC5000 Series is a cam action door closer for slide arm and track applications. This smooth operating door closer offers low opening resistance with the right amount of power to close the door. Durable design, adjustable spring power and superior strength make the DC5000 Series ideal for use in healthcare, office and education facilities.



## DC6000 Series - Cast Iron

Ideal for high-use openings, the DC6000 Series cast iron door closer offers the consistency, durability and strength required to meet the needs of your facility. For interior or exterior doors, this ANSI/BHMA Grade 1 closer features a wide variety of arms, tracks and brackets that can be used in architectural and institutional environments.



## DC8000 Series - Cast Iron

The DC8000 Series ANSI/BHMA Grade 1 institutional door closer is the perfect choice for high-use institutional openings and doors that must meet ADA requirements. The 1-1/2" diameter piston is complemented with a variety of arms and finishes, and quality features that make the easy-to-install DC8000 Series ideal for schools, office buildings, health care facilities, and retail complexes.



# Key Systems



## Access 3® Patented Key System

Corbin Russwin's innovative patented Access 3 key system provides the right level of security for each opening in a facility. Three levels of ANSI/BHMA Grade 1 protection, from patented keyway to UL437 certified, secure every opening. A common key for all three levels of security enhances key control and simplifies administrative procedures. Key blanks are controlled through authorized distribution and geographical protection is available. Available for mortise, rim, component, and Large Format Interchangeable Core (LFIC) cylinders.

## Pyramid Key System

Corbin Russwin's Pyramid key system provides a level of key control management critical for asset and risk protection, personal safety, and user friendliness. It combines a unique integrated control pin in the key and a locking pin mechanism in the corresponding cylinder. Ideally suited for educational and healthcare facilities, industrial and commercial buildings, Pyramid's 7-pin standard allows expanded master keying capabilities and is recommended for installations requiring superior protection against picking, drilling, and other surreptitious entry.



# Specialty Hardware:

## *Behavioral Health Environments*



### **BHSS Trim**

When patient safety and security is the priority, Corbin Russwin's innovative BHSS trim brings elegant style to demanding environments such as modern behavioral health facilities. The integrated lever and escutcheon eliminates catch points and minimizes risk for a superior design that is safe, easy to use, and aesthetically pleasing. The intuitive locking mechanism provides easy access for staff and patients. For added hygiene, the BHSS Trim is available with MicroShield™ antimicrobial coating.

- ***Available on Mortise Locks Only***

### **BLSS Trim**

The Corbin Russwin BLSS trim is capable of an array of functions and can be used on virtually any opening in healthcare environments. Sloping surfaces and overlapping rose and lever address safety concerns common in behavioral health facilities.

- ***Available on Mortise Locks Only***



# Specialty Hardware:

*Behavioral Health Environments*



## **HPSK Push/Pull Paddle Trim**

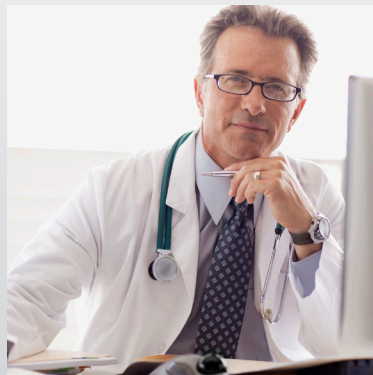
Available on Corbin Russwin mortise or tubular locks, the HPSK push/pull paddle trim provides an aesthetically pleasing alternative to products with a standard trim. Its heavy-duty design and ANSI/BHMA Grade 1 strength help it to withstand abuse from rigorous environments. Multiple mounting orientations, hands free operation, and a sleek, aesthetic form make the push/pull paddle trim ideal for use in healthcare facilities and educational facilities.

- **Available on Mortise and Tubular Locks**

## **HSS Anti-Harm Knob**

The anti-harm knob is designed for safety and security by minimizing catch points with a tapered knob recessed into the rose. Available as sectional trim, the anti-harm knob features recessed finger holes for a better grip and is ideal for psychiatric or detention facilities.

- **Available on Mortise Locks Only**





mortise locks



specialty hardware



decorative hardware



cylindrical locks

key systems



door closers



exit devices



access control devices

## See Our Entire Offering

This catalog provides just a sampling of the thoughtfully engineered and aesthetically designed products Corbin Russwin has to offer. Please see our website for a complete list of products.

## For Additional Information

Contact your ASSA ABLOY Door Security Solutions sales consultant or visit [www.corbinrusswin.com](http://www.corbinrusswin.com).



**ASSA ABLOY**

Corbin Russwin Architectural Hardware  
225 Episcopal Road, Berlin, CT 06037  
Phone 800-543-3658  
Fax 800-447-6714  
[www.corbinrusswin.com](http://www.corbinrusswin.com)

ASSA ABLOY is the global leader in door opening solutions, dedicated to satisfying end-user needs for security, safety and convenience.