

# MOUNTING INFORMATION

Sex nuts or through bolts **are required** for wood and plastic covered composite doors, and any type of door without reinforcements and **recommended** for wood core and metal clad (Kalamein) type doors.

**RH SHOWN  
LH OPPOSITE**

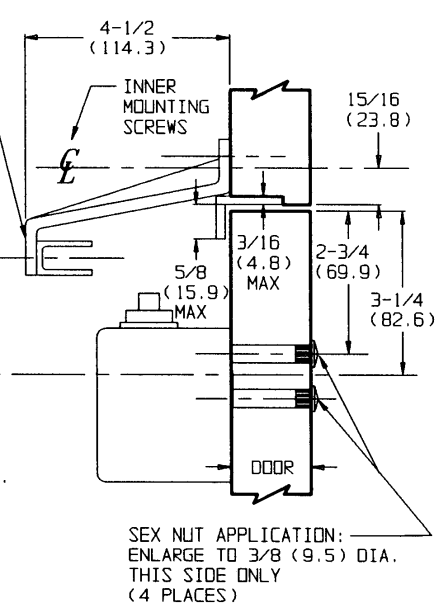
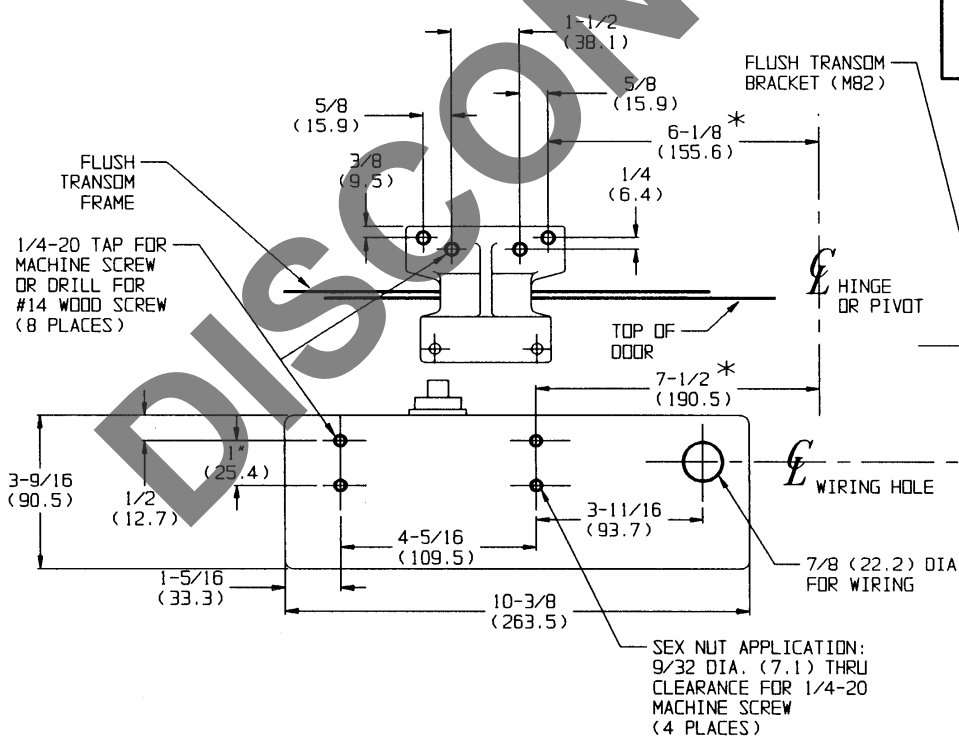
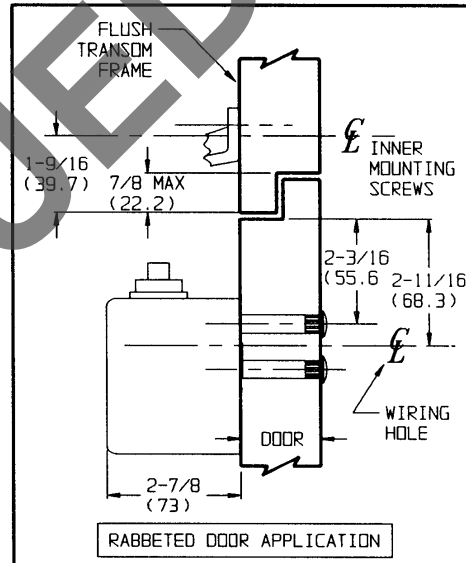
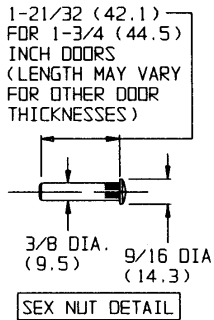
## TEMPLATE CROSS REFERENCE

DESCRIPTION	TEMPLATE
DC26910 SERIES	T30536

**CAUTION:** CLOSER TO BE INSTALLED IN A TRUE HORIZONTAL POSITION TO ENSURE PROPER CLOSER PERFORMANCE.

**NOTES:**

- TO OBTAIN EXTRA CLOSING FORCE, ADD 3" (76.2) TO DIMENSIONS MARKED BY ASTERISK (\*). THIS WILL LIMIT DEGREE OF DOOR OPENING TO 110°.
- DIMENSIONS GIVEN IN INCHES AND (MM).
- MINIMUM TOP RAIL:  
4-1/16 (103.2) STANDARD DOOR  
4-3/8 (111.1) RABBETED DOOR
- DIMENSIONS MARKED (\*) APPLY TO CENTERLINE OF HINGE/PIVOT FOR BUTT, SWING CLEAR, OFFSET AND CENTER HUNG PIVOTS.
- MAXIMUM DEGREE OF OPENING FOR SWING CLEAR HINGE IS 140°.



**RESPONSIBILITY**

Door and Frame Manufacturers are responsible for providing adequate construction or reinforcements for proper installation of hardware shown. All architectural builders hardware must be installed on properly reinforced doors and frames, regardless of the type, material, or method of construction.

DC26910 SERIES BY M82

ELECTROMECHANICAL  
SURFACE DOOR CLOSER  
PARALLEL ARM MOUNTING  
BY FLUSH TRANSOM BRACKET

**Corbin  
Russwin**

DO NOT SCALE DRAWING

SUPERSEDES	VT30191	DR.	KJ	APP	
DATE	5/11/93	TEMPLATE NUMBER	T30522		