

MOUNTING INFORMATION

Sex nuts or through bolts *are required* for wood and plastic covered composite doors, and any type of door without reinforcements and *recommended* for wood core and metal clad (Kalamein) type doors.

RH SHOWN
LH OPPOSITE

TEMPLATE CROSS REFERENCE	
DESCRIPTION	TEMPLATE
DC26920 x M80	T30523

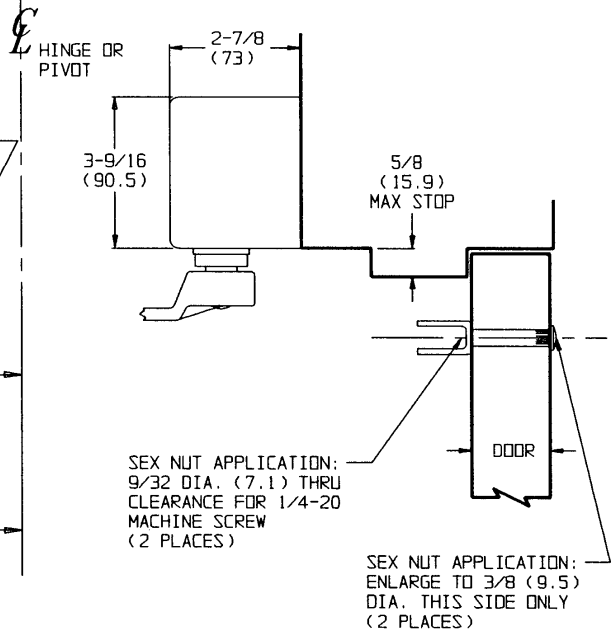
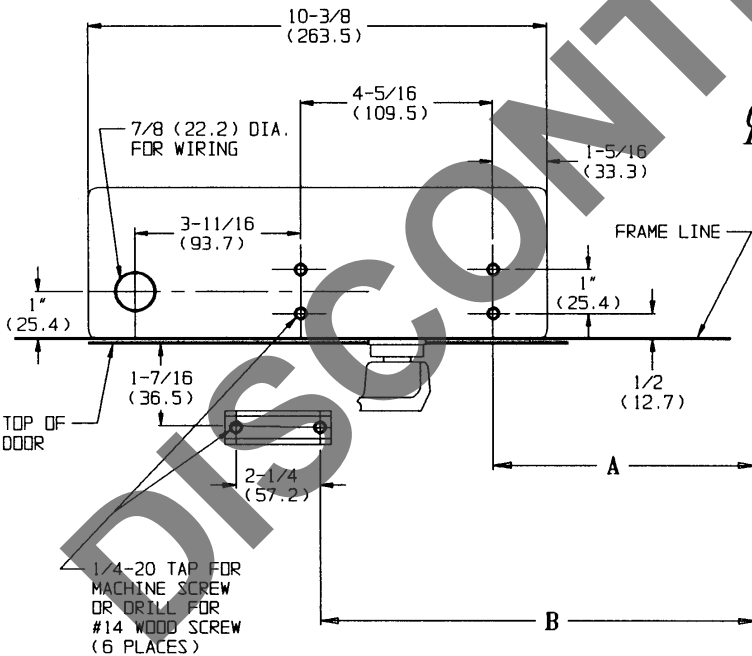
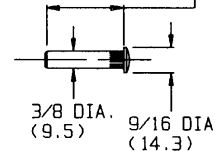
CAUTION: CLOSER TO BE INSTALLED IN A TRUE HORIZONTAL POSITION TO ENSURE PROPER CLOSER PERFORMANCE.

OPENING MAXIMUM	A	B	HINGE CONDITION
110°	8-3/8 (212.7)	13-7/8 (352.4)	BUTTS, OFFSET PIVOTS, AND SWING CLEAR HINGES
140°	6-7/8 (174.6)	12-3/8 (314.3)	BUTTS, OFFSET PIVOTS, AND SWING CLEAR HINGES
* 180°	5-3/8 (136.5)	10-7/8 (276.2)	BUTTS, OFFSET PIVOTS, AND SWING CLEAR HINGES
140°	6-7/8 (174.6)	12-3/8 (314.3)	CENTER HUNG

NOTES:

- DIMENSIONS "A" AND "B" APPLY TO CENTERLINE OF HINGE/PIVOT FOR BUTT, SWING CLEAR, OFFSET AND CENTER HUNG PIVOTS.
- DIMENSIONS GIVEN IN INCHES AND (MM).
- MINIMUM 1-3/4 (44.5) REQUIRED FOR TOP JAMB AND TOP RAIL.
- * DOOR THICKNESS MUST NOT EXCEED 1-3/4 (44.5) INCHES FOR 180°.

1-21/32 (42.1)
FOR 1-3/4 (44.5)
INCH DOORS
(LENGTH MAY VARY FOR OTHER DOOR THICKNESSES)



RESPONSIBILITY

Door and Frame Manufacturers are responsible for providing adequate construction or reinforcements for proper installation of hardware shown. All architectural builders hardware must be installed on properly reinforced doors and frames, regardless of the type, material, or method of construction.

DC26920 SERIES

ELECTROMECHANICAL SURFACE DOOR CLOSER TOP JAMB MOUNTING



DO NOT SCALE DRAWING			
SUPERSEDES	DR.	APP.	
VT 30173	K J		
DATE	TEMPLATE NUMBER		
5/5/93	T 30534		