

# MOUNTING INFORMATION

Sex nuts or through bolts **are required** for wood and plastic covered composite doors, and any type of door without reinforcements and **recommended** for wood core and metal clad (Kalamein) type doors.

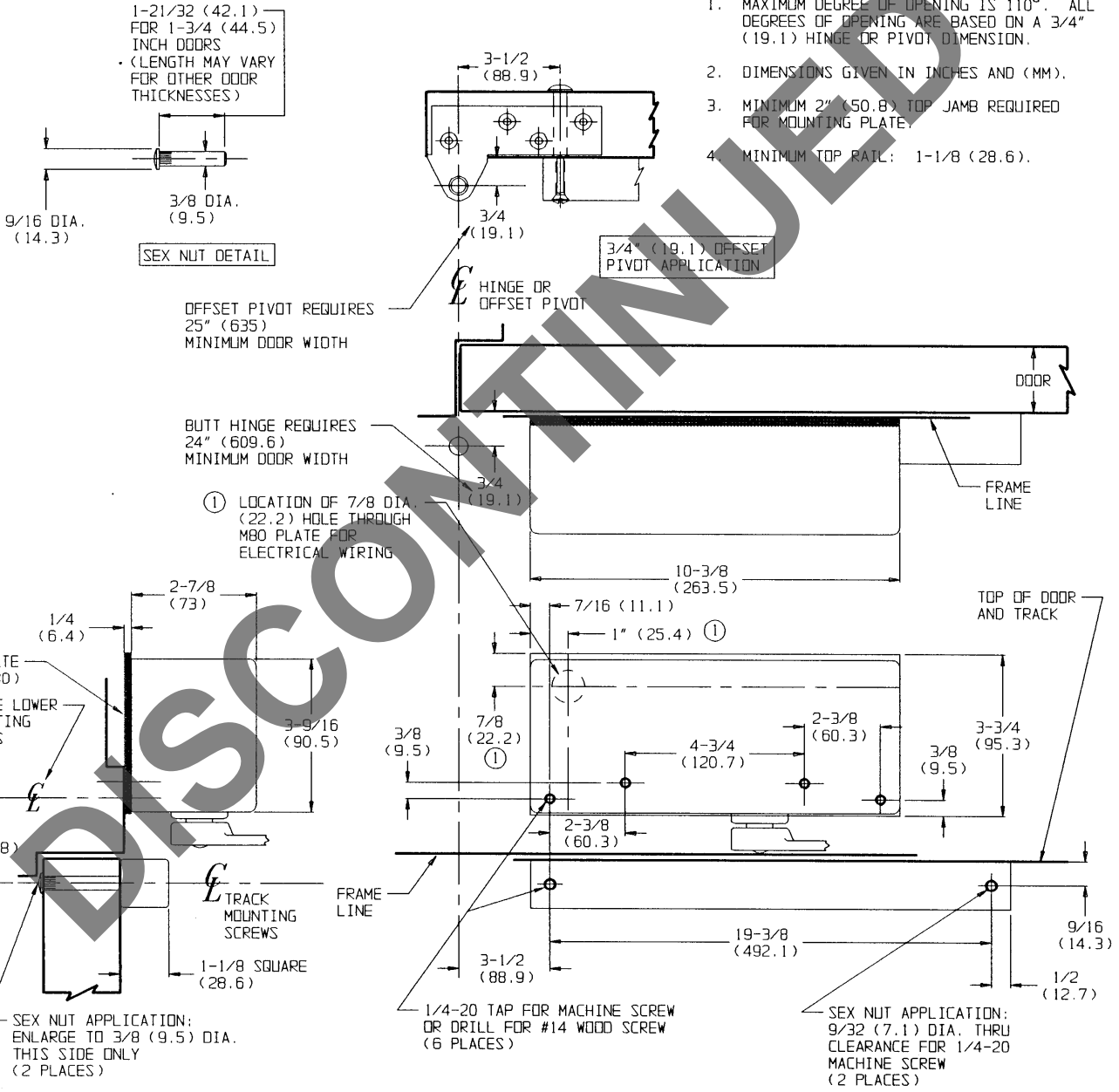
RH SHOWN  
LH OPPOSITE

TEMPLATE CROSS REFERENCE	
DESCRIPTION	TEMPLATE
DC26930	T30537

**CAUTION:** CLOSER TO BE INSTALLED IN A TRUE HORIZONTAL POSITION TO ENSURE PROPER CLOSER PERFORMANCE.

**NOTES:**

1. MAXIMUM DEGREE OF OPENING IS 110°. ALL DEGREES OF OPENING ARE BASED ON A 3/4" (19.1) HINGE OR PIVOT DIMENSION.
2. DIMENSIONS GIVEN IN INCHES AND (MM).
3. MINIMUM 2" (50.8) TOP JAMB REQUIRED FOR MOUNTING PLATE.
4. MINIMUM TOP RAIL: 1-1/8 (28.6).



## RESPONSIBILITY

Door and Frame Manufacturers are responsible for providing adequate construction or reinforcements for proper installation of hardware shown. All architectural builders hardware must be installed on properly reinforced doors and frames, regardless of the type, material, or method of construction.

DC26930 Series By M80

ELECTROMECHANICAL  
SURFACE DOOR CLOSER  
TRACK MOUNTING



DO NOT SCALE DRAWING		
SUPSEDES	T30524	DR. DLD
DATE	4/27/94	APP. <i>[Signature]</i>
TEMPLATE NUMBER	T30524-1	