

MOUNTING INFORMATION

Sex nuts or through bolts **are required** for wood and plastic covered composite doors, and any type of door without reinforcements and **recommended** for wood core and metal clad (Kalamein) type doors.

RH SHOWN
LH OPPOSITE

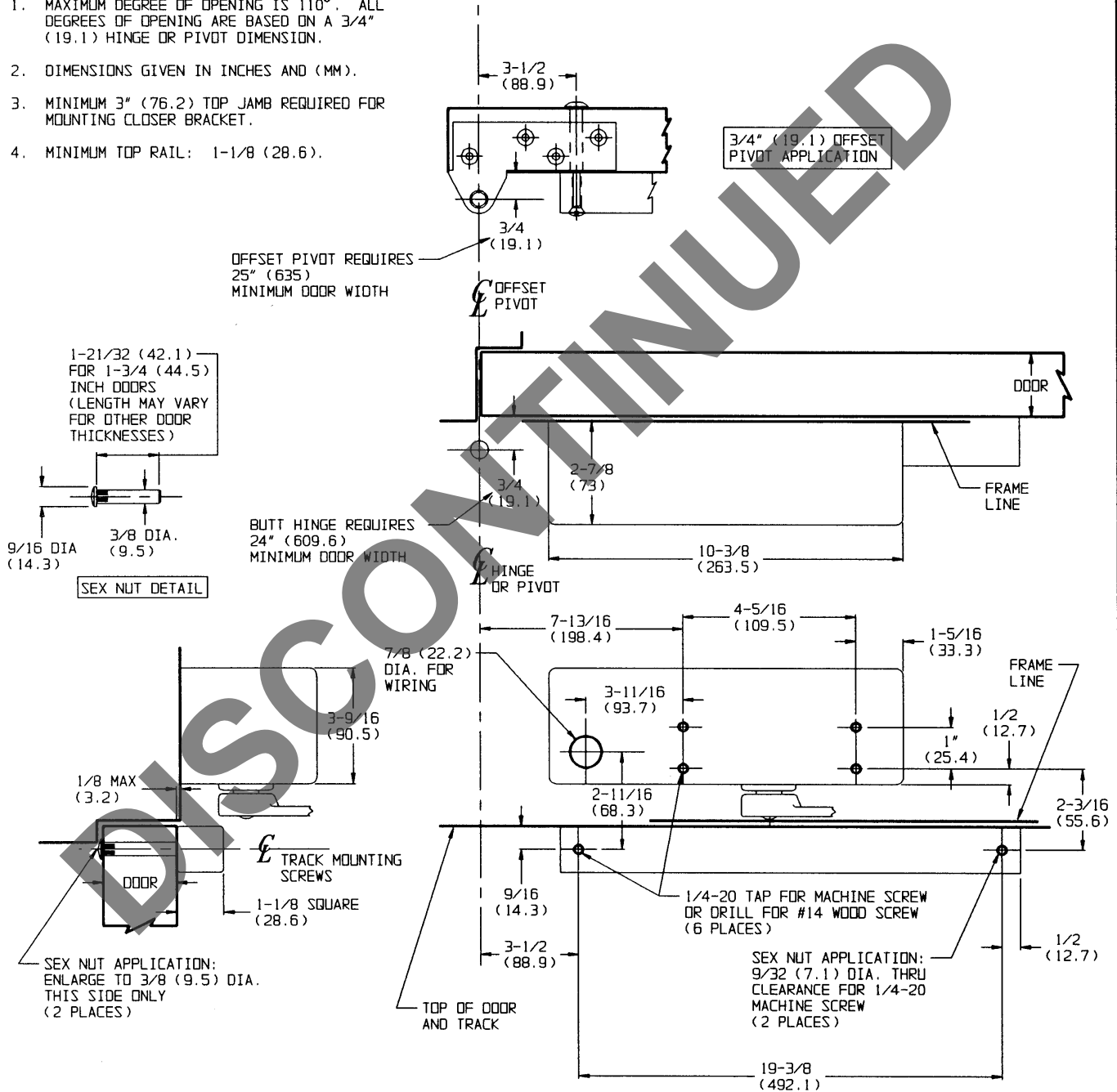
TEMPLATE CROSS REFERENCE

| DESCRIPTION | TEMPLATE |
|---------------|----------|
| DC26930 x M80 | T30524 |

CAUTION: CLOSER TO BE INSTALLED IN A TRUE HORIZONTAL POSITION TO ENSURE PROPER CLOSER PERFORMANCE.

NOTES:

1. MAXIMUM DEGREE OF OPENING IS 110°. ALL DEGREES OF OPENING ARE BASED ON A 3/4" (19.1) HINGE OR PIVOT DIMENSION.
2. DIMENSIONS GIVEN IN INCHES AND (MM).
3. MINIMUM 3" (76.2) TOP JAMB REQUIRED FOR MOUNTING CLOSER BRACKET.
4. MINIMUM TOP RAIL: 1-1/8 (28.6).



RESPONSIBILITY

Door and Frame Manufacturers are responsible for providing adequate construction or reinforcements for proper installation of hardware shown. All architectural builders hardware must be installed on properly reinforced doors and frames, regardless of the type, material, or method of construction.

DC26930 SERIES

ELECTROMECHANICAL
SURFACE DOOR CLOSER
TRACK MOUNTING

**Corbin
Russwin**™

| DO NOT SCALE DRAWING | | |
|----------------------|----------|-------------------------|
| SUPERSEDES | VT 30031 | DR. KJ |
| DATE | 5/11/93 | TEMPLATE NUMBER T 30537 |