

# MOUNTING INFORMATION

Sex nuts or through bolts *are required* for wood and plastic covered composite doors, and any type of door without reinforcements and *recommended* for wood core and metal clad (Kalamein) type doors.

RH SHOWN  
LH OPPOSITE

## TEMPLATE CROSS REFERENCE

DESCRIPTION	TEMPLATE
DC3210, DC3610 x A4 & A5	T30619
DC3210, DC3610 x A3	T30617
DC3210, DC3610 x A2	T30618

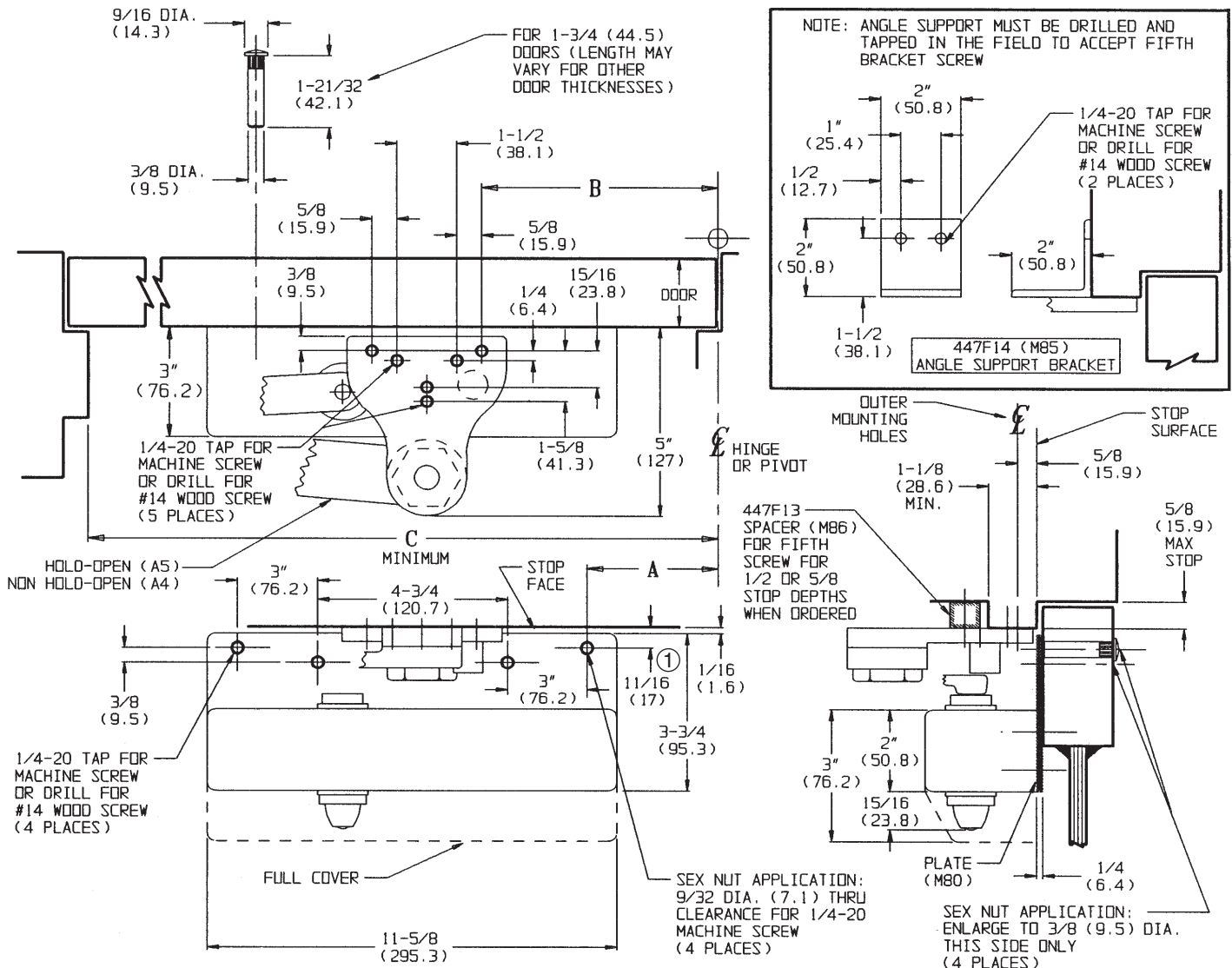
### NOTES:

- DIMENSIONS GIVEN IN INCHES AND (MM).
- MINIMUM TOP RAIL: 3" (76.2)
- DIMENSIONS "A" & "B" APPLY TO CENTERLINE OF HINGE/PIVOT FOR BUTT, SWING CLEAR, OFFSET AND CENTER HUNG PIVOTS.

OPENING MAXIMUM	A		B	C MINIMUM
	DC2210, DC2410	DC2610		
85°	8-3/4 (222.3)	10" (254)	12-9/16 (319.1)	28-5/8 (727.1)
90°	7-7/16 (188.9)	8-11/16 (220.7)	11-5/8 (295.3)	27-5/8 (701.7)
100°	5-3/4 (146.1)	7" (177.8)	10-1/16 (255.6)	26-1/8 (663.6)
110°	4-7/16 (112.7)	5-11/16 (144.5)	8-3/4 (222.3)	24-3/4 (628.7)

### SEX NUT DETAIL

**CAUTION:** CLOSER TO BE INSTALLED IN A TRUE HORIZONTAL POSITION TO ENSURE PROPER CLOSER PERFORMANCE.



### RESPONSIBILITY

DOOR AND FRAME MANUFACTURERS ARE RESPONSIBLE FOR PROVIDING ADEQUATE CONSTRUCTION OR REINFORCEMENTS FOR PROPER INSTALLATION OF HARDWARE SHOWN. ALL ARCHITECTURAL BUILDERS HARDWARE MUST BE INSTALLED ON PROPERLY REINFORCED DOORS AND FRAMES, REGARDLESS OF TYPE, MATERIAL, OR METHOD OF CONSTRUCTION.

DC3210 Series x A4 & A5  
DC3610 Series x A4 & A5  
And Plate M80

Surface Door Closer ...  
Parallel Arm Mounting  
By Backstop Arm & Plate

**Corbin  
Russwin**

**ASSA ABLOY**

www.corbinrusswin.com

SUPERSEDES T30620 DO NOT SCALE DRAWING

TEMPLATE NUMBER T30620-1 DATE 04-10