

MOUNTING INFORMATION


Sex nuts or through bolts **are required** for wood and plastic covered composite doors, and any type of door without reinforcements and **recommended** for wood core and metal clad (Kalamein) type doors.

RH SHOWN
LH OPPOSITE

TEMPLATE CROSS REFERENCE

DESCRIPTION	TEMPLATE
DC3220, DC3620	T30621
DC3220, DC3620 x M80	T30623

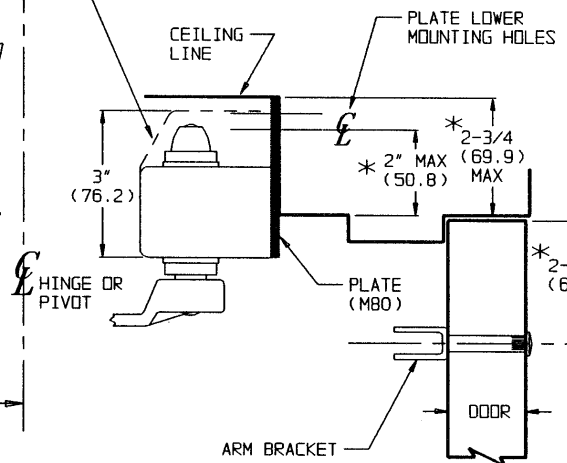
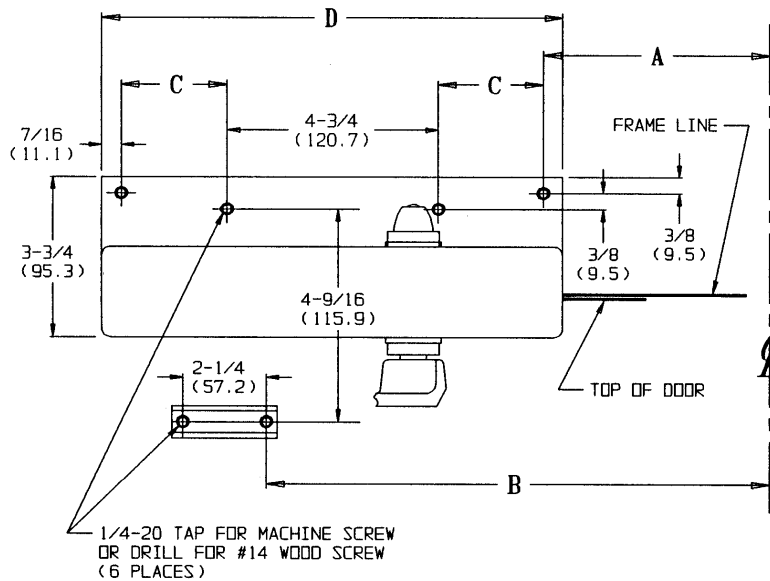
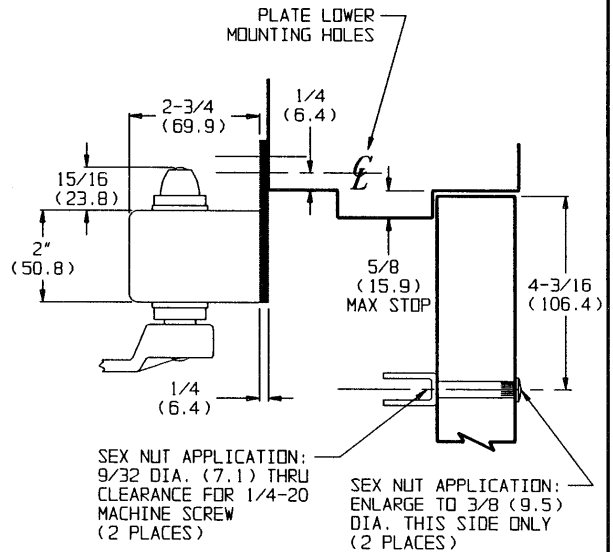
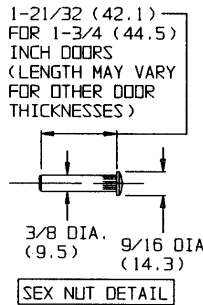
DESCRIPTION	C	D
DC3620 x M80	2-3/8 (60.3)	10-3/8 (263.5)
DC3220 x M80	3" (76.2)	11-5/8 (295.3)
FULL COVER		

OPENING MAXIMUM	A	B	HINGE CONDITION
110°	8" (203.2)	13-3/8 (339.7)	BUTTS, OFFSET PIVOTS, AND SWING CLEAR HINGES
180°	5" (127)	10-3/8 (263.5)	
 140°	6-1/2 (165.1)	11-7/8 (301.6)	CENTER HUNG

CAUTION: CLOSER TO BE INSTALLED IN A TRUE HORIZONTAL POSITION TO ENSURE PROPER CLOSER PERFORMANCE.

NOTES:

- DIMENSIONS GIVEN IN INCHES AND (MM).
- 1" (25.4) MINIMUM TOP JAMB REQUIRED FOR MOUNTING PLATE.
- TO MOUNT PLATE ON JAMBS NARROWER THAN 2-3/4 (69.9), DECREASE 2" DIMENSION AND INCREASE 2-7/16 DIMENSION EQUALLY.
- FOR 1-3/4 (44.5) MINIMUM JAMBS WITH REQUIRED CLEARANCE ABOVE CLOSER, MOUNT CLOSER DIRECTLY TO JAMB WITHOUT PLATE.
- MINIMUM TOP RAIL: ADD 5/16 (7.9) TO ARM BRACKET DIMENSION.
- DIMENSIONS "A" & "B" APPLY TO CENTERLINE OF HINGE/PIVOT FOR BUTT, SWING CLEAR, OFFSET AND CENTER HUNG PIVOTS.



RESPONSIBILITY

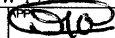
Door and Frame Manufacturers are responsible for providing adequate construction or reinforcements for proper installation of hardware shown. All architectural builders hardware must be installed on properly reinforced doors and frames, regardless of the type, material, or method of construction.

DC3220 SERIES BY M80
DC3620 SERIES BY M80

SURFACE DOOR CLOSER
TOP JAMB MOUNTING BY PLATE

Corbin Russwin
www.corbinrusswin.com

DO NOT SCALE DRAWING

SUPERSEDES	VT30377	DR.	KJ	OFF. 
DATE	6/3/93	TEMPLATE NUMBER	T30622	