

MOUNTING INFORMATION

Sex nuts or through bolts **are required** for wood and plastic covered composite doors, and any type of door without reinforcements and **recommended** for wood core and metal clad (Kalamain) type doors.

RH SHOWN
LH OPPOSITE

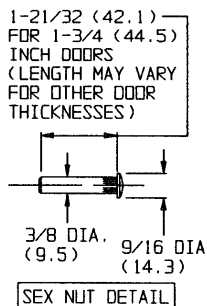
TEMPLATE CROSS REFERENCE

DESCRIPTION	TEMPLATE
DC3220, DC3620	T30621
DC3220, DC3620 x M80	T30622

CAUTION: CLOSER TO BE INSTALLED IN A TRUE HORIZONTAL POSITION TO ENSURE PROPER CLOSER PERFORMANCE.

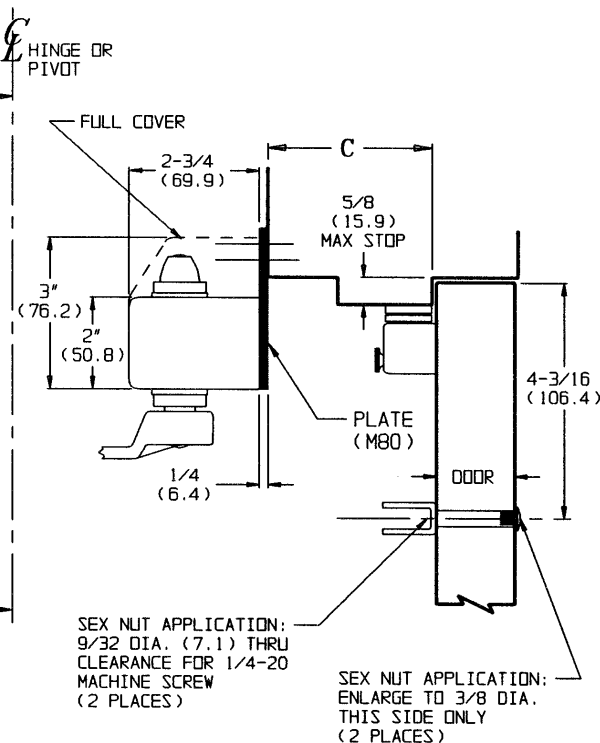
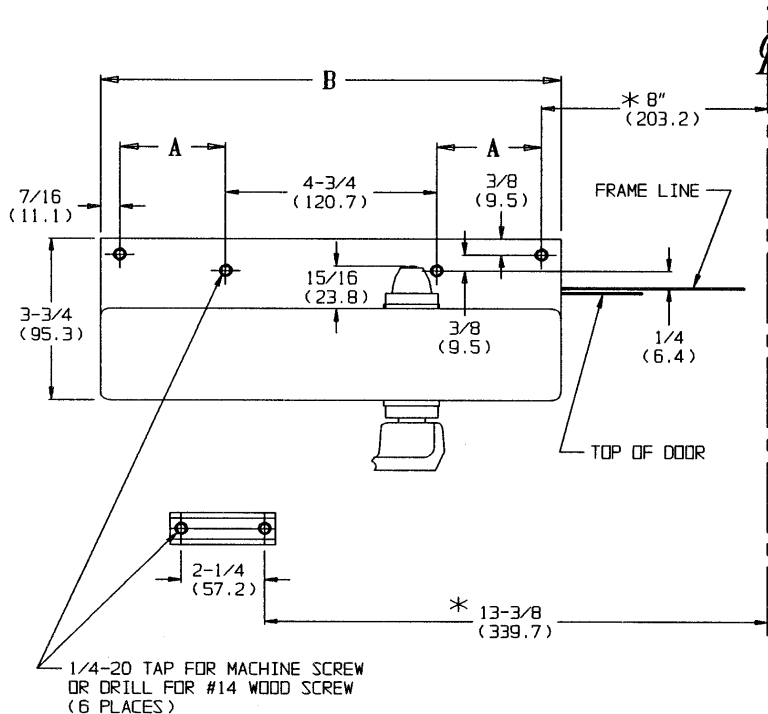
DESCRIPTION	A	B
DC3620 x M80	2-3/8 (60.3)	10-3/8 (263.5)
DC3220 x M80	3" (76.2)	11-5/8 (295.3)
FULL COVER		

DOOR HOLDER SERIES	C MINIMUM
DH5201, DH5202, DH5203 SERIES DH5201S, DH5202S, DH5203S SERIES	1-1/8 (28.6)
DH5401, DH5402 SERIES	1-3/4 (44.5)



NOTES:

- DIMENSIONS GIVEN IN INCHES AND (MM).
- 1" (25.4) MINIMUM TOP JAMB REQUIRED FOR MOUNTING PLATE.
- DEGREE OF OPENING: 85° THROUGH 110°
- MINIMUM TOP RAIL: 4-1/2 (114.3).
- DIMENSIONS MARKED (*) APPLY TO CENTERLINE OF HINGE/PIVOT FOR BUTT, SWING CLEAR, OFFSET AND CENTER HUNG PIVOTS.



RESPONSIBILITY

Door and Frame Manufacturers are responsible for providing adequate construction or reinforcements for proper installation of hardware shown. All architectural builders hardware must be installed on properly reinforced doors and frames, regardless of the type, material, or method of construction.

DC3220 SERIES BY M80
DC3620 SERIES BY M80

SURFACE DOOR CLOSER
TOP JAMB MOUNTING
BY PLATE FOR HOLDERS

**Corbin
Russwin**™
www.corbinrusswin.com

DO NOT SCALE DRAWING

SUPERSEDES	DR.	K J
DATE	5/10/93	TEMPLATE NUMBER
		T 30623