



DC4600 Series

Non Handed Door Closer

Installation Instructions

80-9340-1010-152 (11-06)

Non Hold Open Models

Sized
(*Sizes 2,3,4,5)

Weaker

DC460*
DC461*
DC462*



CAUTION An Incorrectly installed or improperly adjusted door closer can cause property damage or personal injury. These installation instructions should be followed to avoid the possibility of misapplication or misadjustment. **CAUTION**

NOTE: For special applications a separate door and frame preparation template is packed with these instructions. Use this instruction sheet for installation sequence and closer adjustments only.

- Doors should be hung on ball bearing or anti-friction hinges.
- A separate door stop is recommended.
- Door and frame must be properly reinforced.
- Adjust closing time speed between 3 and 7

Regular Arm Installation
See Page 2
DC4600

Right Hand Door - RLH
Left Hand Reverse - LHR

Top Jamb Installation
See Page 5
DC4620

Left Hand Door - LH
Right Hand Reverse - RHR

Parallel Arm Installation
See Pages 3 & 4
DC4610

Left Hand Door - LH
Right Hand Reverse - RHR

Regular Arm Installation
See Page 2
DC4600

Left Hand Door - LH
Right Hand Reverse - RHR

Top Jamb Installation
See Page 5
DC4620

Right Hand Door - RH
Left Hand Reverse - LHR

Parallel Arm Installation
See Pages 3 & 4
DC4610

Right Hand Door - RH
Left Hand Reverse - LHR

- These door closers should NOT be installed on the exposed side (weather side) of exterior doors.

	<p>#7</p> <p>Metal 1/4-20</p>	<p>3/16"</p> <p>Wood</p>	<p>Self Drilling Screws Wood and Metal</p> <p>For Wood drill 3/16 hole</p> <p>Machine Screws</p> <p>#7 Drill, 1/4-20 Tap</p>	<p>(Optional)</p> <p>Sleeve Nut and Bolt</p> <p>Drill 9/32 thru from Closer Side 3/8 Drill other side</p> <p>Thru Bolt and Grommet Nut</p> <p>Drill 9/32 thru from Closer Side 3/8 Drill other Side</p>
--	-------------------------------	--------------------------	--	--

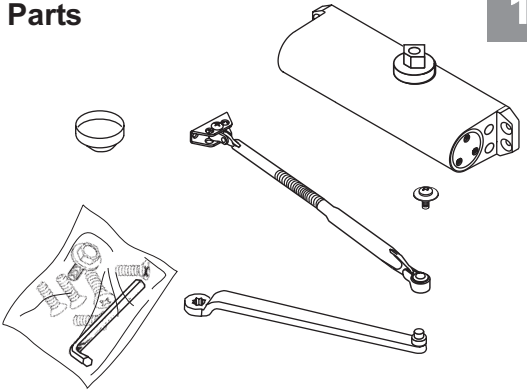
<p>Standard Components</p> <p>Spindle Cap</p> <p>Closer Size Stamp</p> <p>"L" Valve</p> <p>"S" Valve</p> <p>Arm Assembly</p> <p>Connecting Rod</p> <p>Main Arm</p> <p>Adjusting Tube</p> <p>Elbow Screw</p> <p>Soffit Plate</p> <p>483F44 Soffit Plate Used with Parallel Arm Closers Only</p>	<p>Optional Components</p> <p>446F10 Plate</p>
---	---

DC4600 Series

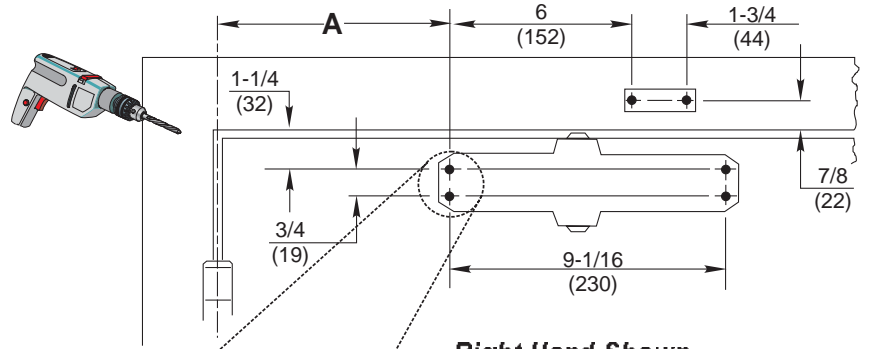
Non Hold Open Door Closers — Regular Arm

80-9340-1010-152 (11-06)

Parts



1

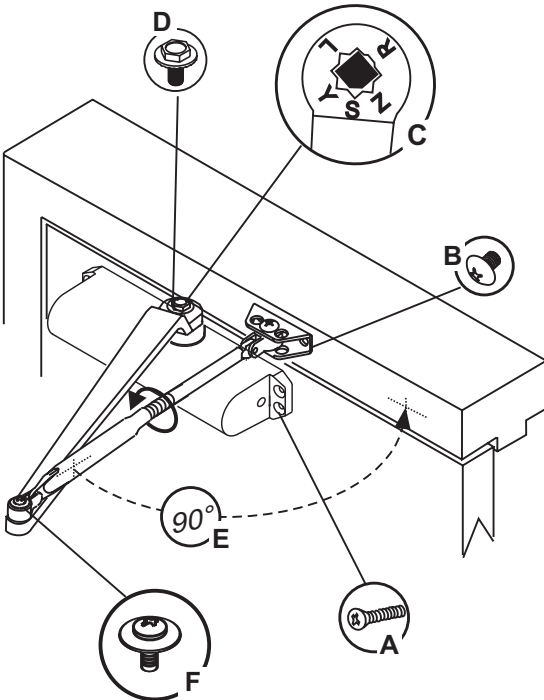


2

Right Hand Shown

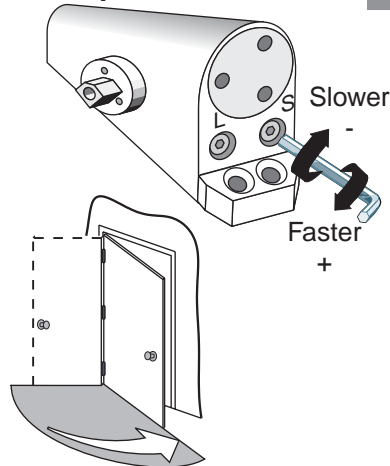
Opening	Dimension "A"	Inches (mm)
To 100°	$\frac{7}{(178)}$	
101° to 120°	$\frac{6}{(152)}$	
* 121° to 180°	$3\text{-}1/2$ (89)	

* Door/Wall/Hardware/Jamb conditions permitting



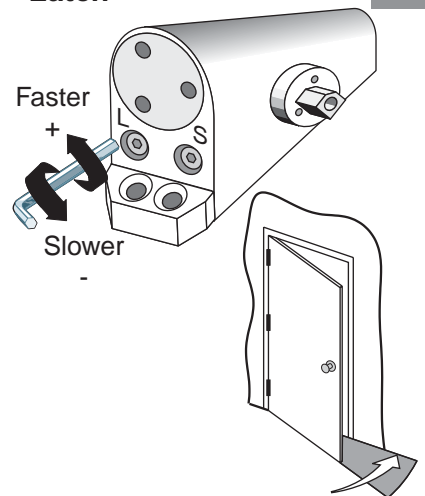
3

Sweep



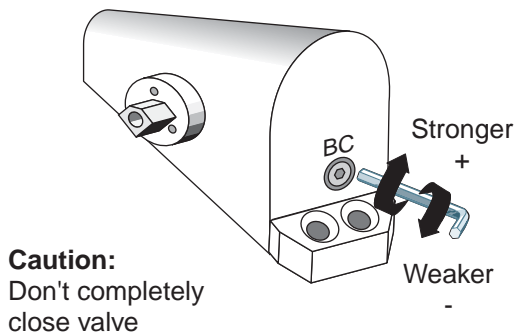
4

Latch



5

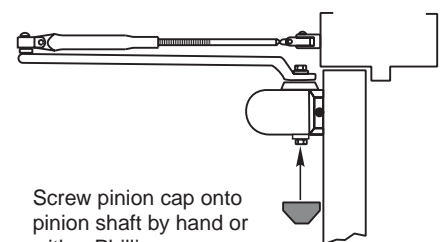
Backcheck



Caution:
Don't completely close valve

6

Spindle Cap



Screw pinion cap onto pinion shaft by hand or with a Phillips screw driver - DO NOT OVER TIGHTEN.

7

DC4610 Series

Non Hold Open Door Closers — Parallel Arm

80-9340-1010-152 (11-06)

Parts

Optional
446F10
Plate

Door Opening	A	B	C
To 100°	9-1/4 (235)	7-5/8 (194)	8-5/8 (219)
101° to 130°	7-3/4 (197)	6-1/8 (156)	7-1/8 (181)
*131° to 180°	5-3/4 (146)	4-1/8 (105)	5-1/8 (130)

* Door/Wall/Hardware/Jamb conditions permitting

2

Right Hand Shown

Inches (mm)

Top of Door

Frame

Holes for 446F10 Plate only

2-3/4 (70)

3/8 (10)

A

2 (50)

7/16 (11)

1/2 (13)

7 (178)

4 (102)

1-1/2 (38)

C

2-1/8 (54)

1/2 (13)

3-1/4 (83)

3/4 (19)

9-1/16 (230)

B

3

Close Valves

Latch

Sweep

Slower

Slower

4

5

Place Arm on Spindle

Rotate

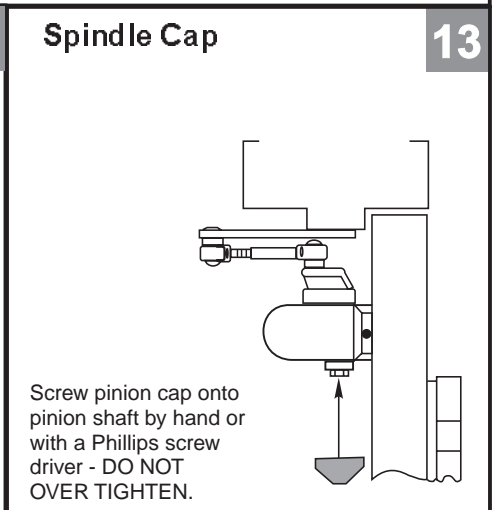
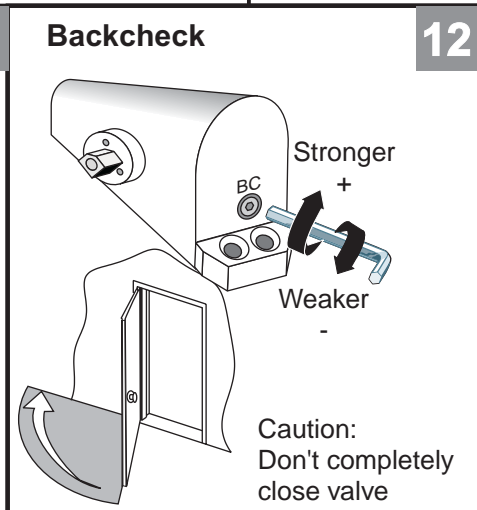
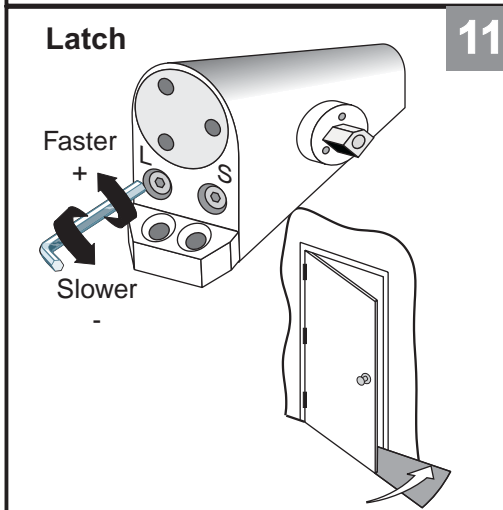
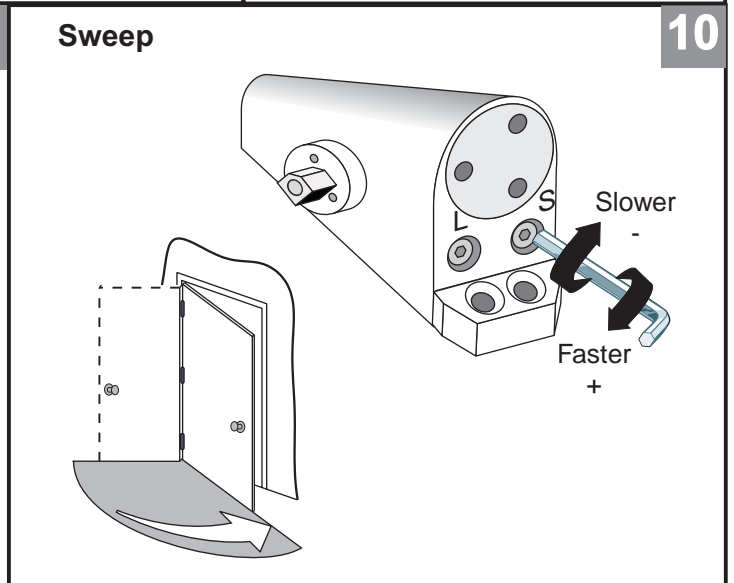
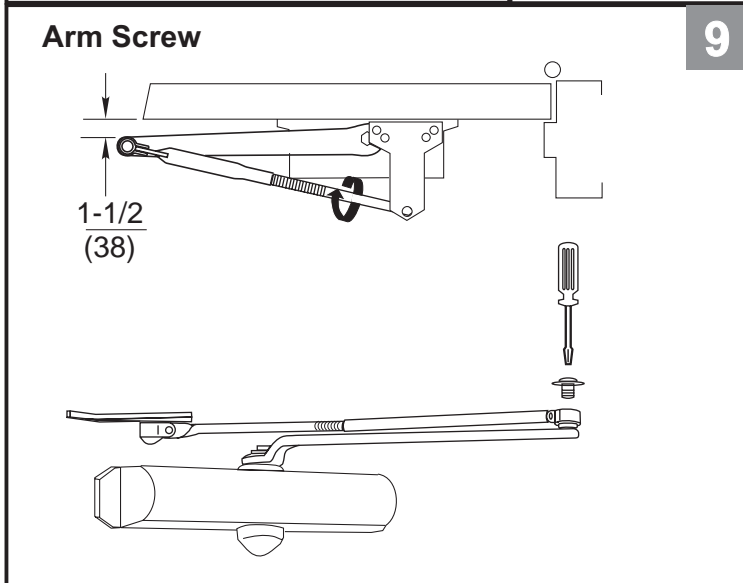
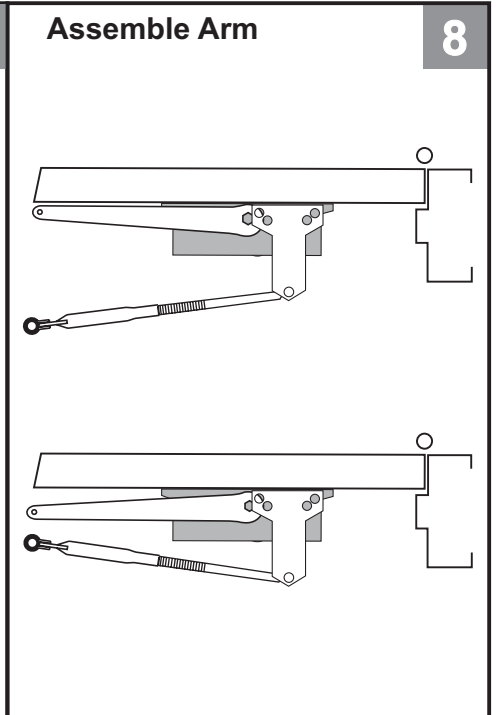
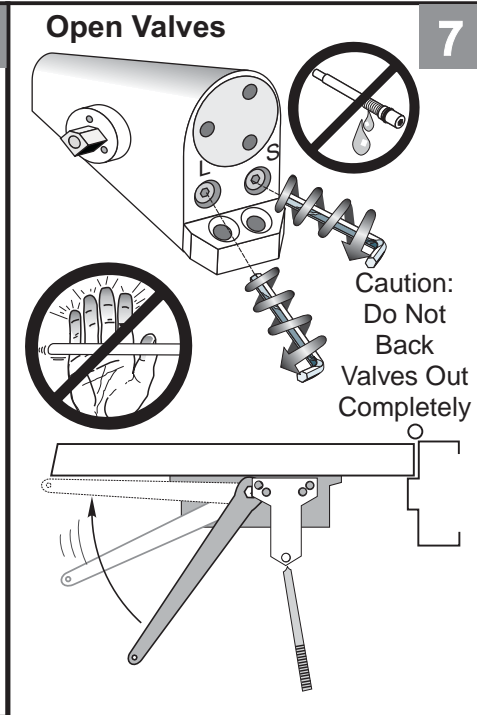
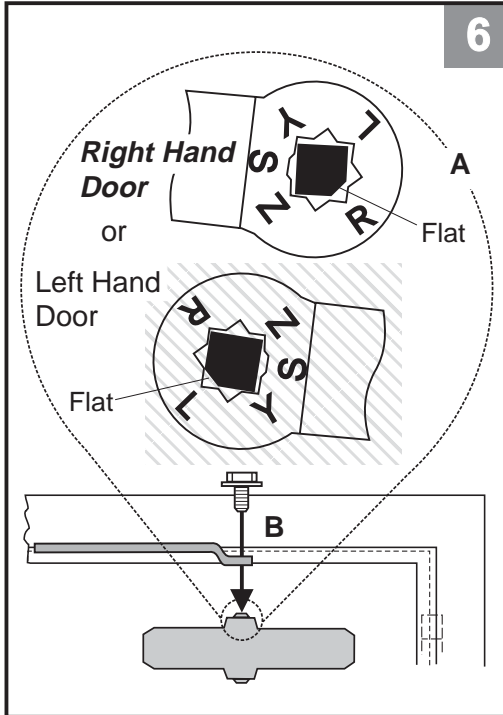
Remove Arm from Spindle

See Step 6 on Page 4

DC4610 Series

Non Hold Open Door Closers — Parallel Arm

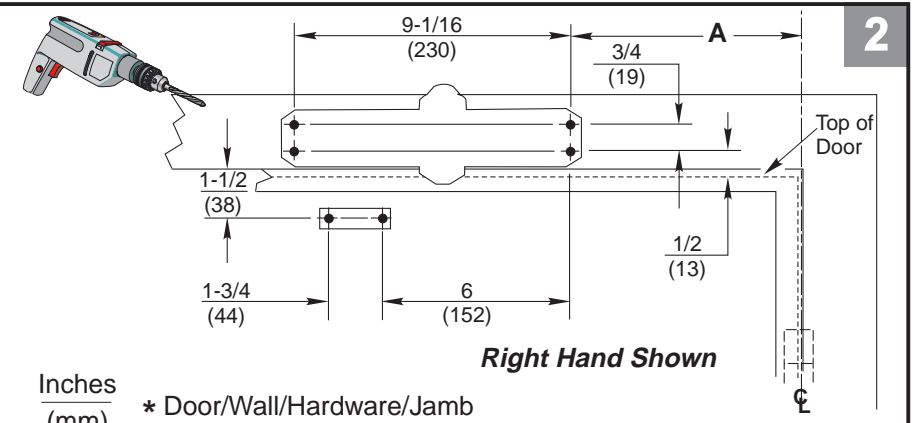
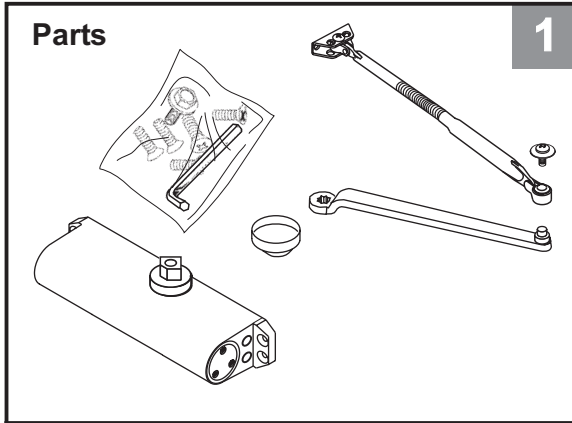
80-9340-1010-152 (11-06)



DC4620

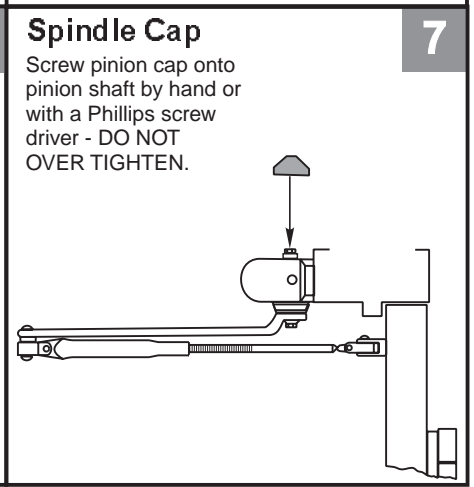
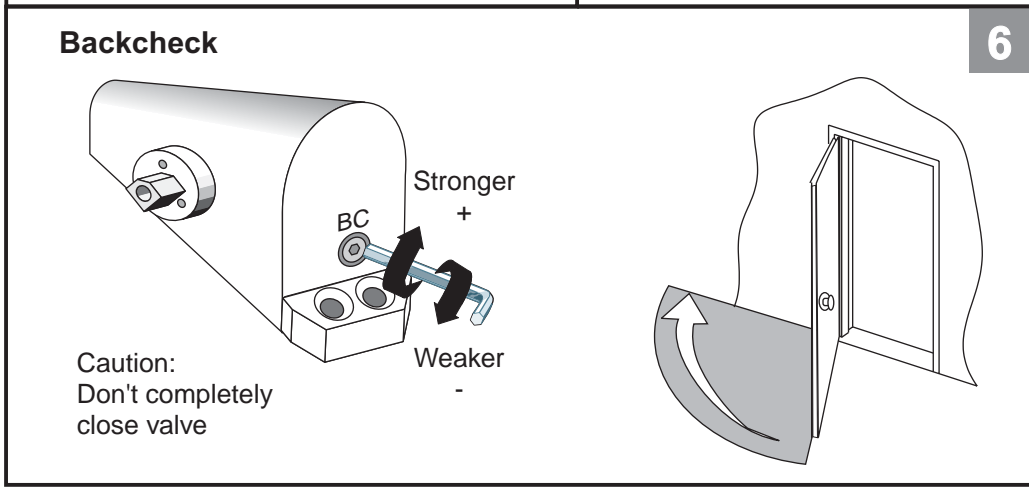
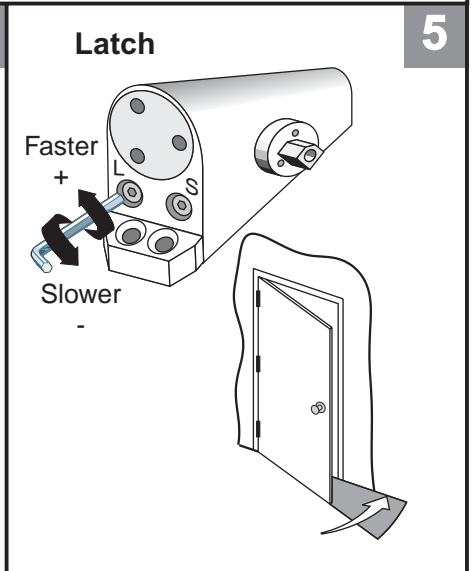
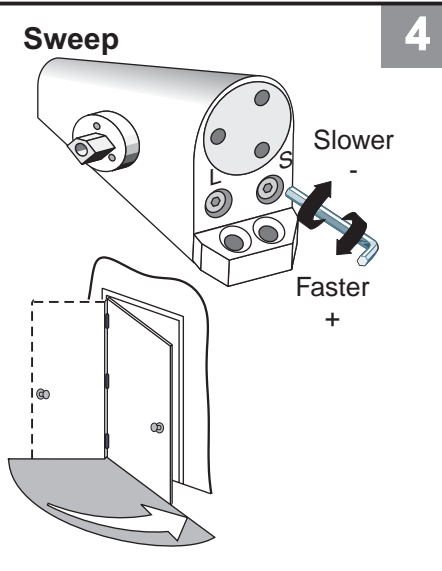
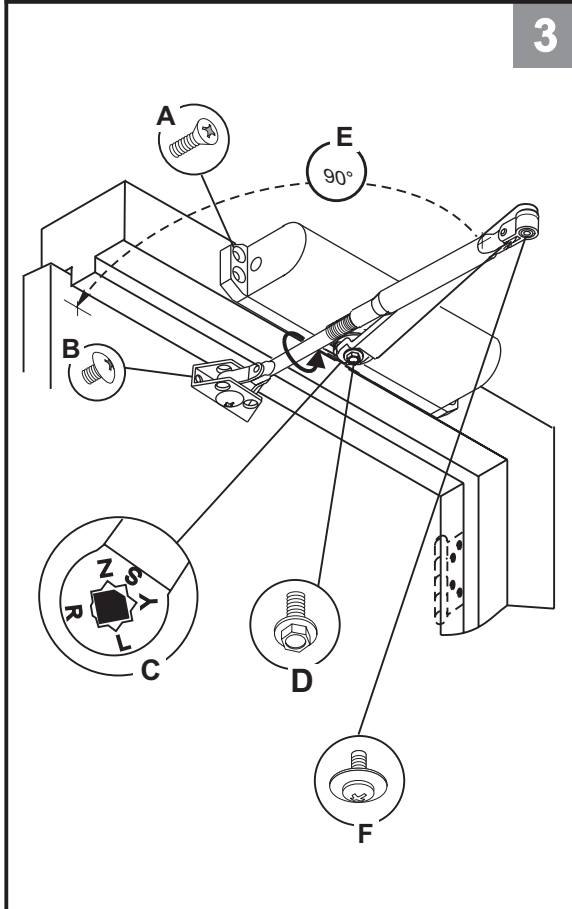
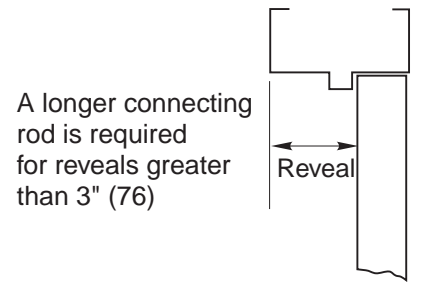
Non Hold Open Door Closers — Top Jamb Arm

80-9340-1010-152 (11-06)



Inches (mm) * Door/Wall/Hardware/Jamb conditions permitting

Opening	Dimension "A"
To 100°	7-1/2 (191)
101° to 120°	6 (152)
*121° to 180°	3-1/2 (89)

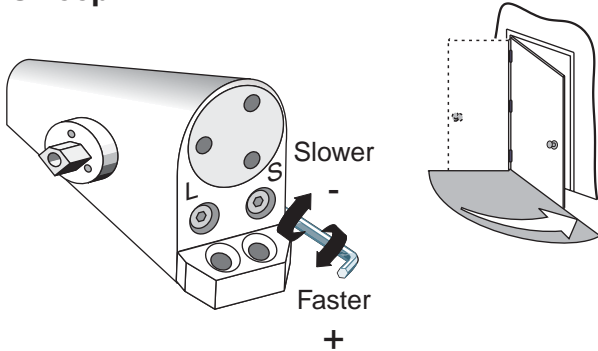


DC4600 Adjustments Page

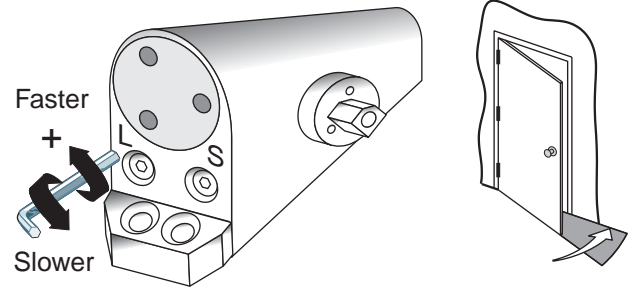
80-9340-1010-152 (11-06)

**Corbin
Russwin**
Yale Security Inc.
Monroe, NC 28110
Phone (800)-438-1951/Fax (800)-338-0965
in Canada
Phone (800)-461-3007/Fax (800)-461-8989
www.yalesecurity.com

Sweep

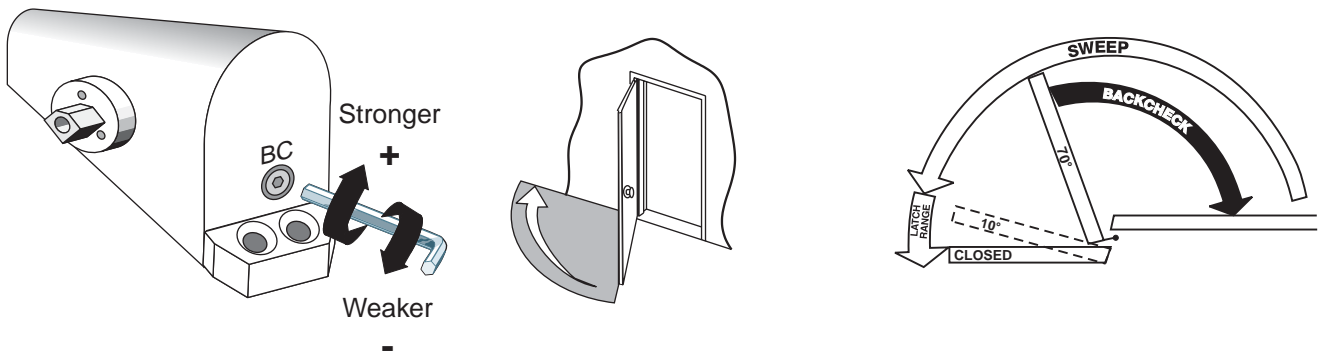


Latch

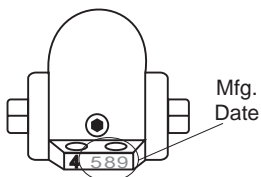


(Use 1/8" Hex Wrench for these Adjustments)

Backcheck



To identify your model:



- 2=DC4602
- 3=DC4603
- 4=DC4604
- 5=DC4605

Arm Placement in Shoe

