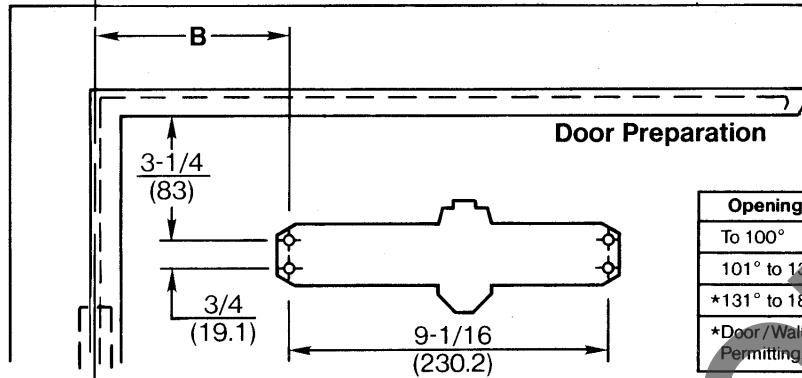


Hinge or Pivot

Frame Preparation



Door Preparation

Opening	Dim. A	Dim. B
To 100°	9-1/4 (235)	7-5/8 (194)
101° to 130°	7-3/4 (197)	6-1/8 (156)
*131° to 180°	5-3/4 (146)	4-1/8 (105)

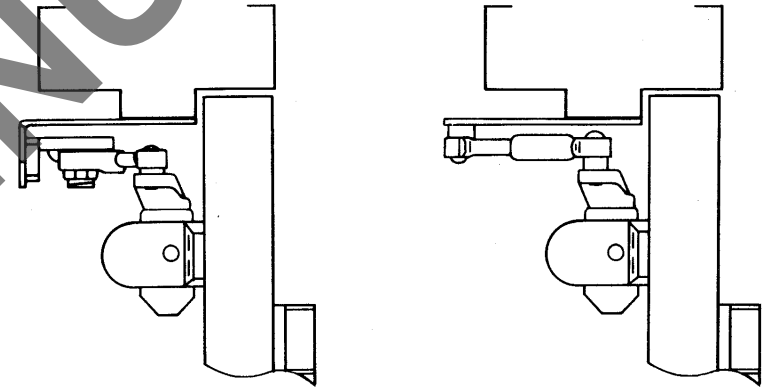
\*Door/Wall/Hardware Conditions Permitting.

**Notes:**

- Do not scale drawing.
- Left hand door shown.
- Dimensions are in inches and millimeters.

Hold Open

Non Hold Open



Door swing may be limited by door, frame, wall or hardware conditions.

Hollow-metal doors require channel or box-type reinforcement when thru-bolt mount is specified.

Sex-bolts required for wood or plastic faced fire-door mounting.

Minimum thickness recommended for reinforcements in hollow-metal doors and frames: .1046" (2.66mm.) unless otherwise noted.

Fastener Chart			
	Fasteners	Door or Frame	Drill Sizes
Standard	1/4-20 Screws	Metal	#7(.201"dia.) tap: 1/4-20
	14-10 Screws	Wood	7/32"(5.54mm.)
Optional	Sex nuts and bolts	Hollow metal	9/32"(7.00mm.) through 3/8"(9.5mm.) door face opposite to closer
		Aluminum or Wood	3/8"(9.50mm.) through
	Through bolts and grommet nuts	All	9/32"(7.00mm.) through 3/8"(9.50mm.) dia x 3/8"(10mm.) deep, door face opposite to closer

DC4610 SERIES  
SURFACE DOOR CLOSER  
PARALLEL ARM MOUNTING



TEMPLATE NUMBER

T30667

DATE

6-97