

MOUNTING INFORMATION

Sex nuts or through bolts are required for wood and plastic covered composite doors, and any type of door without reinforcements and recommended for wood core and metal clad (Kalamein) type doors.

RH SHOWN
LH OPPOSITE

Top Rail	A	B	Minimum Clearance Required Over Door
			Non Hold-open
2-1/2" & Over (63.5)	1" (25.4)	3/4" (19.1)	1-11/16" (42.9)
1-3/4" Min. (44.5)	5/8" (16)	1-1/8" (28.6)	2-1/16" (52.4)

Door Thickness	Sex Nut Length "L"
1-3/8" (35)	1-9/32" (33)
1-3/4" (44) & over	1-21/32" (42)

CAUTION: Closer To Be Installed In A True Horizontal Position To Ensure Proper Closer Performance.

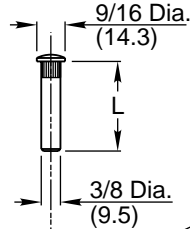
NOTES:

1. Dimensions given in inches (mm).

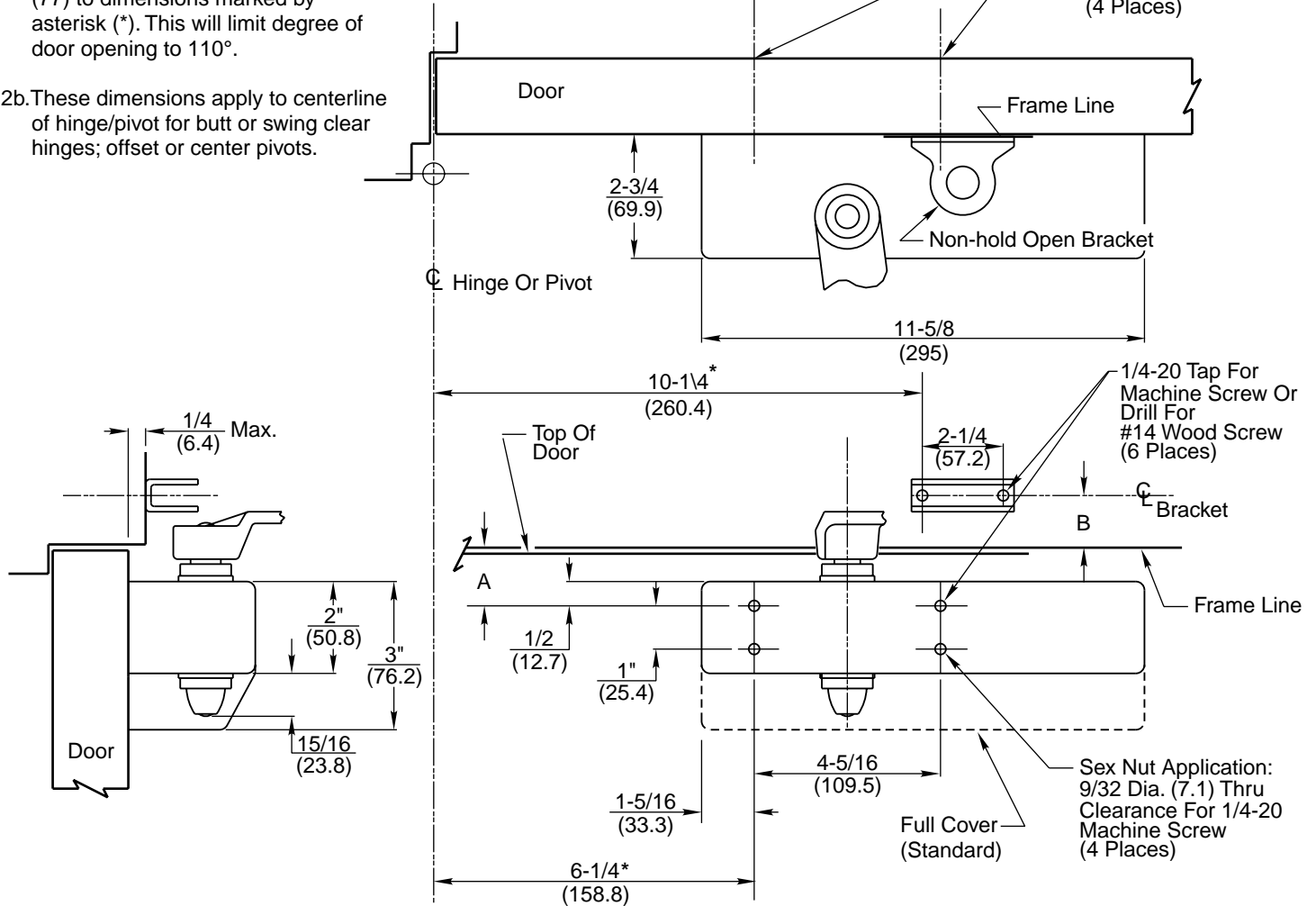
2a. To obtain extra closing force, add 3" (77) to dimensions marked by asterisk (*). This will limit degree of door opening to 110°.

2b. These dimensions apply to centerline of hinge/pivot for butt or swing clear hinges; offset or center pivots.

Sex Nut Detail



Sex Nut Application:
Enlarge To
3/8 Dia. (9.5)
This Side Only
(4 Places)



RESPONSIBILITY

Door and Frame Manufacturers are responsible for providing adequate construction or reinforcements for proper installation of hardware shown. All architectural builders hardware must be installed on properly reinforced doors and frames, regardless of the type, material, or method of construction.

DC6200 Series x A10
DC6400 Series x A10

Heavy Duty Regular Arm
Surface Door Closer
Regular Mounting



www.corbinrusswin.com

Do Not Scale Drawing

Supersedes _____ Dr. _____ App. _____

Date 06-04

Template Number T30724