

**MOUNTING INFORMATION**

Sex nuts or through bolts are required for wood and plastic covered composite doors, and any type of door without reinforcements and recommended for wood core and metal clad (Kalamein) type doors.

RH SHOWN  
LH OPPOSITE

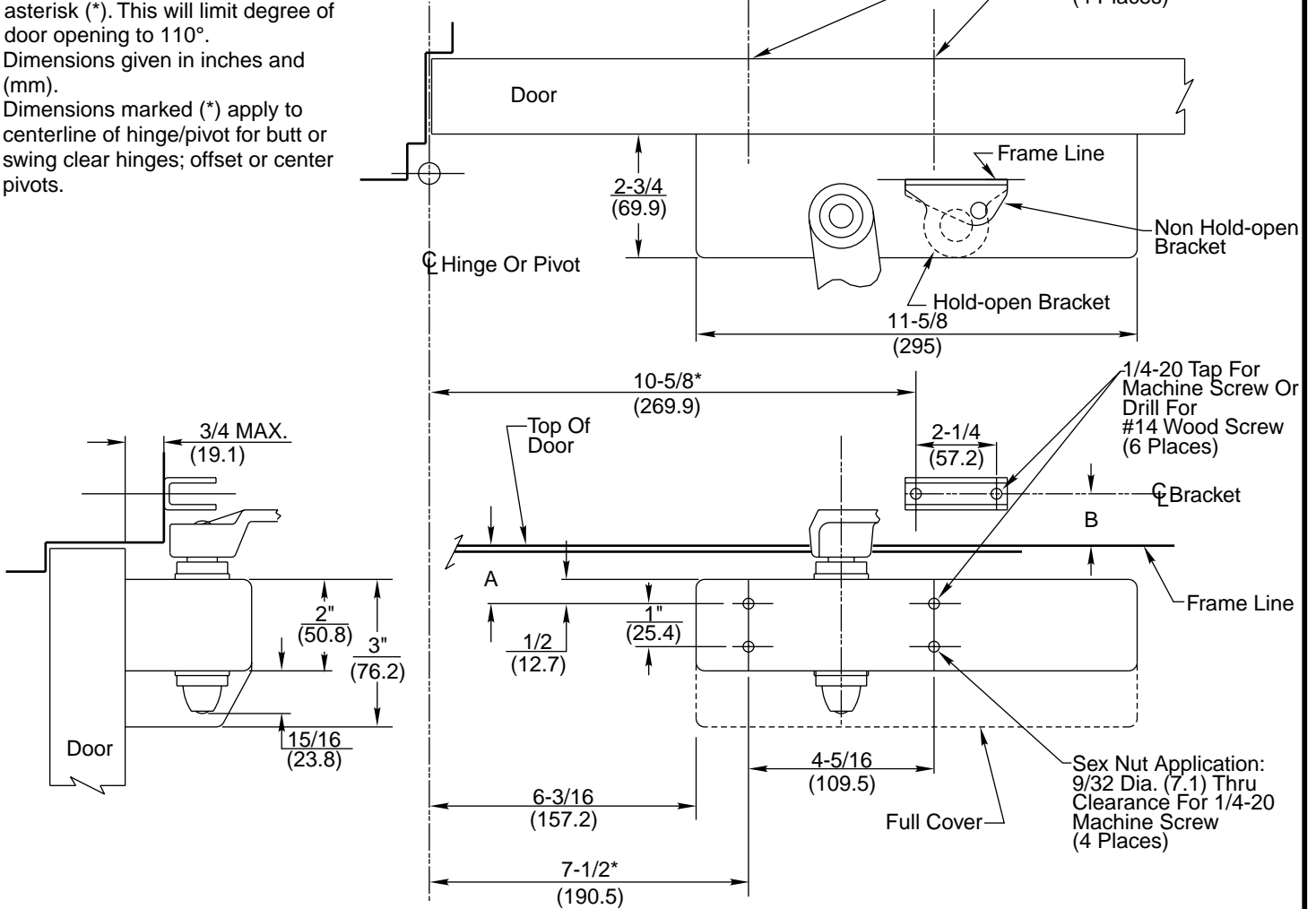
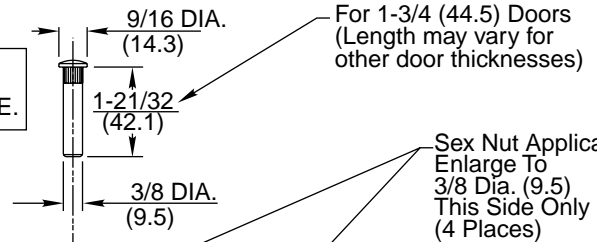
Top Rail	A	B	Minimum Clearance Required Over Door	
			Non Hold-open	Hold-open
2-1/2" & OVER (63.5)	1" (25.4)	7/8" (22.2)	1-1/2" (38.1)	1-11/16" (42.9)
1-3/4" MIN. (44.5)	5/8" (15.9)	1-1/4" (31.8)	1-7/8" (47.6)	2-1/16" (52.4)

**CAUTION:** CLOSER TO BE INSTALLED IN A TRUE HORIZONTAL POSITION TO ENSURE PROPER CLOSER PERFORMANCE.

**NOTES:**

- To obtain extra closing force, add 3" (76.2) to dimensions marked by asterisk (\*). This will limit degree of door opening to 110°.
- Dimensions given in inches and (mm).
- Dimensions marked (\*) apply to centerline of hinge/pivot for butt or swing clear hinges; offset or center pivots.

**SEX NUT DETAIL**



**RESPONSIBILITY**

Door and Frame Manufacturers are responsible for providing adequate construction or reinforcements for proper installation of hardware shown. All architectural builders hardware must be installed on properly reinforced doors and frames, regardless of the type, material, or method of construction.

DC6200 Series  
DC6400 Series  
Surface Door Closer  
Regular Mounting  
(with or without A1)

**Corbin Russwin**<sup>®</sup>  
www.corbinrusswin.com

Do Not Scale Drawing

Supersedes	Dr.	App.
Date 03-04	Template Number	T30703