

MOUNTING INFORMATION

Sex nuts or through bolts are required for wood and plastic covered composite doors, and any type of door without reinforcements and recommended for wood core and metal clad (Kalamein) type doors.

RH SHOWN
LH OPPOSITE

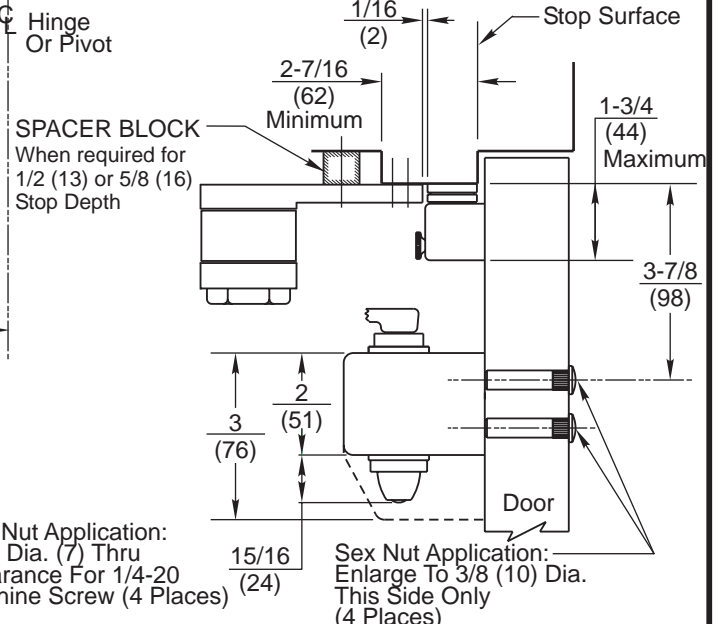
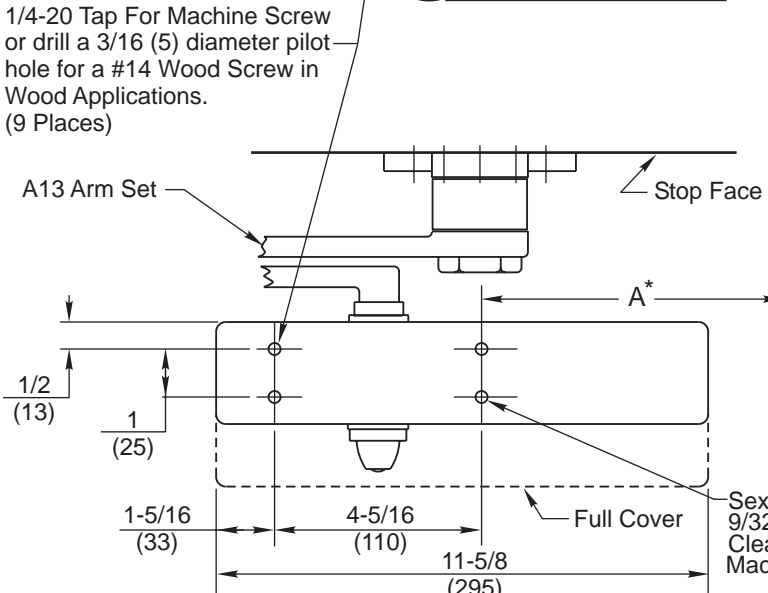
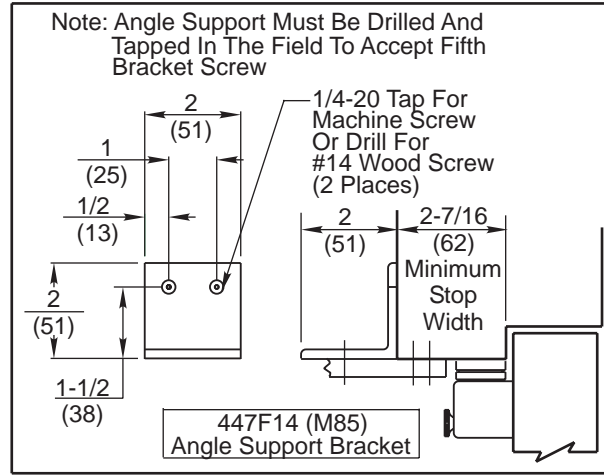
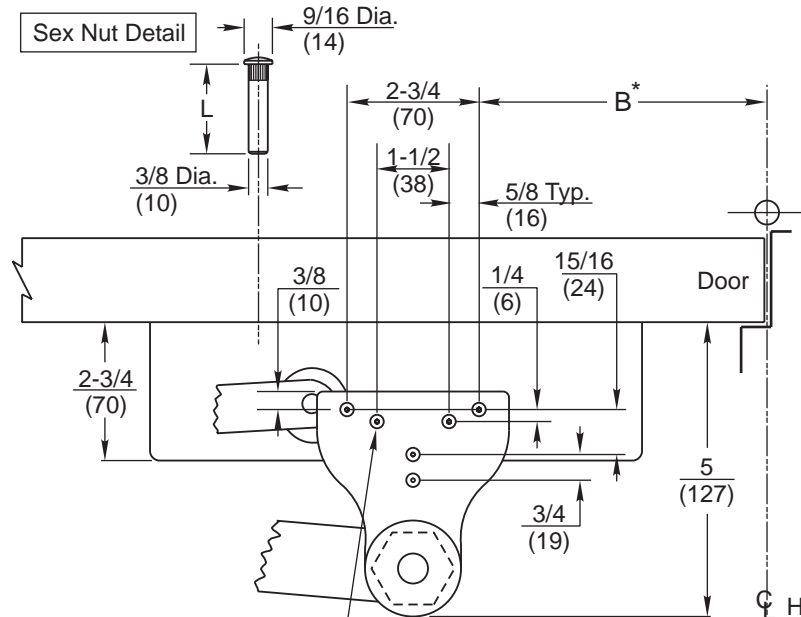
CAUTION: Closer To Be Installed In A True Horizontal Position To Ensure Proper Closer Performance.

NOTES:

1. Dimensions "A" & "B" apply to centerline of hinge/pivot for butt, swing clear, offset and center hung pivots.
2. Maximum degree of opening for center hung pivot is 140°
3. Dimensions given in inches and (mm).
4. Minimum Top Rail: 6 (152)
5. To obtain extra closing force, add 3" (76) to dimensions marked by asterisk (*). This will limit degree of opening to 110°.

Door Thickness	Sex Nut Length "L"
1-3/8 (35)	1-9/32 (33)
1-3/4 (44) & over	1-21/32 (42)

Opening Maximum	A	B	Min Door Width	Application
90°	12-3/4 (324)	11-5/8 (295)	27-3/4 (705)	NON A.D.A.
180°	8-11/16 (221)	7-9/16 (192)	23-5/8 (600)	



RESPONSIBILITY
Door and Frame Manufacturers are responsible for providing adequate construction or reinforcements for proper installation of hardware shown. All architectural builders hardware must be installed on properly reinforced doors and frames, regardless of the type, material, or method of construction.

DC6210 Series x A13
DC6410 Series x A13
**Surface Door Closer
Parallel Arm Mounting
By A13 Special Spacer Arm
for Use With Auxiliary Stops**

Corbin Russwin
www.corbinrusswin.com
Do Not Scale Drawing
Supersedes _____ Dr. _____ App. _____
Date 07-06 Template Number T31024