

**MOUNTING INFORMATION**

Sex nuts or through bolts are required for wood and plastic covered composite doors, and any type of door without reinforcements and recommended for wood core and metal clad (Kalamein) type doors.

RH SHOWN  
LH OPPOSITE

**NOTES:**

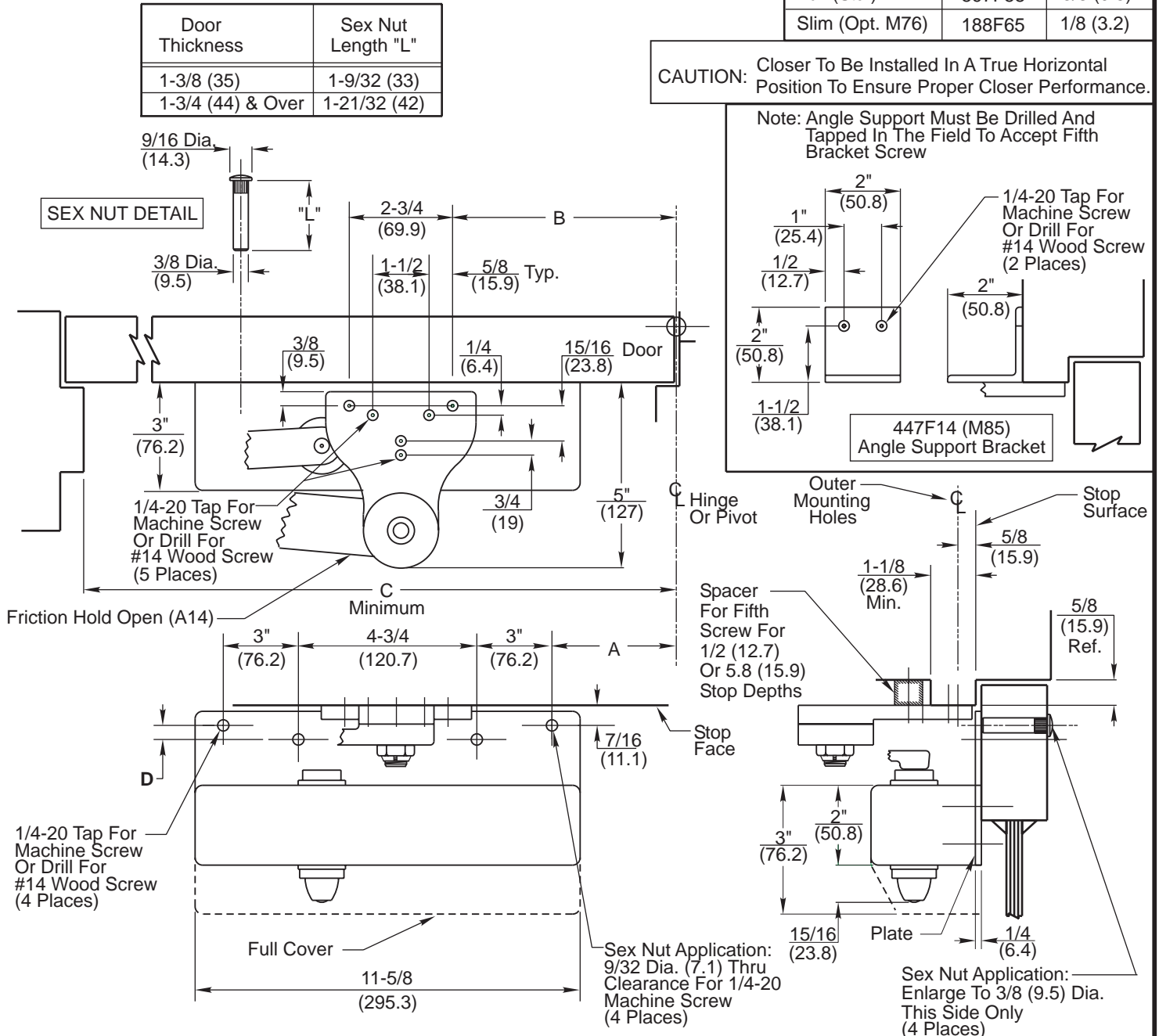
1. Dimensions given in inches and (mm).
2. Maximum degree of opening for center hung pivot is 140°
3. Minimum Top Rail: 3" (76.2)
4. Dimensions "A" & "B" apply to centerline of hinge/pivot for butt or swing clear hinge; offset or center pivots.

Opening Maximum	A	B	C Minimum
90°	7-1/4 (184)	11-5/8 (295)	27-7/8 (708)
180°	3-3/16 (81)	7-9/16 (192)	23-5/8 (600)

COVER	PLATE	"D" Dim.
Full (Std.)	597F58	3/8 (9.5)
Slim (Opt. M76)	188F65	1/8 (3.2)

**CAUTION:** Closer To Be Installed In A True Horizontal Position To Ensure Proper Closer Performance.

Note: Angle Support Must Be Drilled And Tapped In The Field To Accept Fifth Bracket Screw



**RESPONSIBILITY**

Door and Frame Manufacturers are responsible for providing adequate construction or reinforcements for proper installation of hardware shown. All architectural builders hardware must be installed on properly reinforced doors and frames, regardless of the type, material, or method of construction.

DC6210 Series By A14  
DC6410 Series By A14  
And Plate 597F58/188F65  
Surface Door Closer  
Parallel Arm Mounting  
By Friction Hold Open and Plate



www.corbinrusswin.com

Do Not Scale Drawing

Supersedes	Dr.	App.
Date 09-05	Template Number	T31020