

Mounting Information

Sex nuts or through bolts are required for wood and plastic covered composite doors, and any type of door without reinforcements and recommended for wood core and metal clad (Kalamein) type doors.

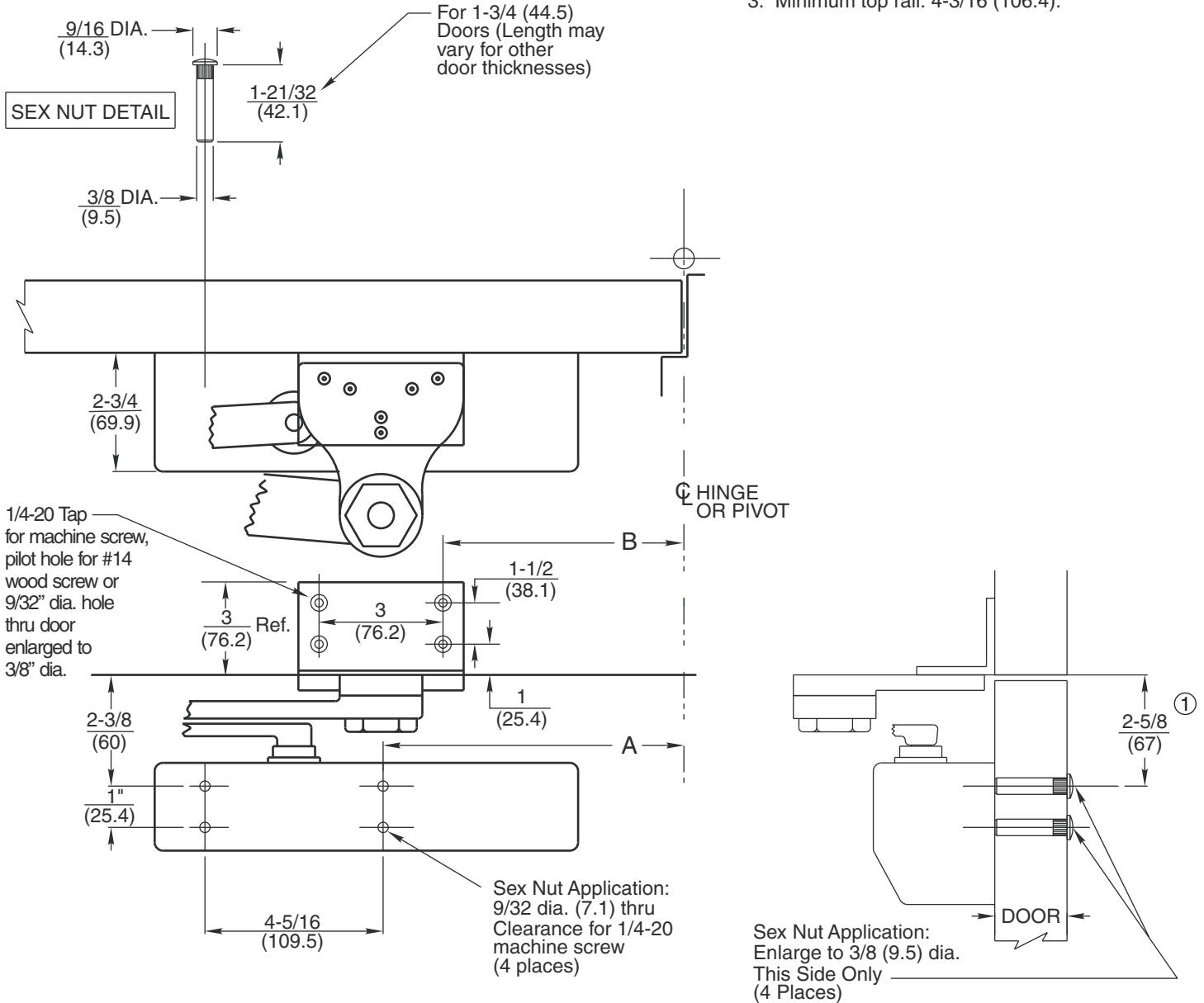
RH Shown LH Opposite

CAUTION: Closer to be installed in a true horizontal position to ensure proper closer performance.

Notes:

1. Dimensions "A" & "B" apply to centerline of hinge/pivot for butt, swing clear and offset pivots.
2. Dimensions given in inches and (mm).
3. Minimum top rail: 4-3/16 (106.4).

OPENING MAXIMUM	A	B
85°	13-3/4 (349)	12-7/16 (316)
90°	12-13/16 (325)	11-1/2 (292)
100°	11-1/4 (286)	9-15/16 (252)
110°	9-15/16 (252)	8-5/8 (219)



RESPONSIBILITY

DOOR AND FRAME MANUFACTURERS ARE RESPONSIBLE FOR PROVIDING ADEQUATE CONSTRUCTION OR REINFORCEMENTS FOR PROPER INSTALLATION OF HARDWARE SHOWN. ALL ARCHITECTURAL BUILDERS HARDWARE MUST BE INSTALLED ON PROPERLY REINFORCED DOORS AND FRAMES, REGARDLESS OF TYPE, MATERIAL, OR METHOD OF CONSTRUCTION.

DC6210 Series by A2, A4, A5
DC6410 Series by A2, A4, A5

Heavy Duty Arm
Flush Transom Bracket 499F30

**Corbin
Russwin**
ASSA ABLOY

www.corbinrusswin.com

SUPERSEDES	T31030	DO NOT SCALE DRAWING
TEMPLATE NUMBER	T31030-1	DATE 04-10