

MOUNTING INFORMATION

Sex nuts or through bolts are required for wood and plastic covered composite doors, and any type of door without reinforcements and recommended for wood core and metal clad (Kalamein) type doors.

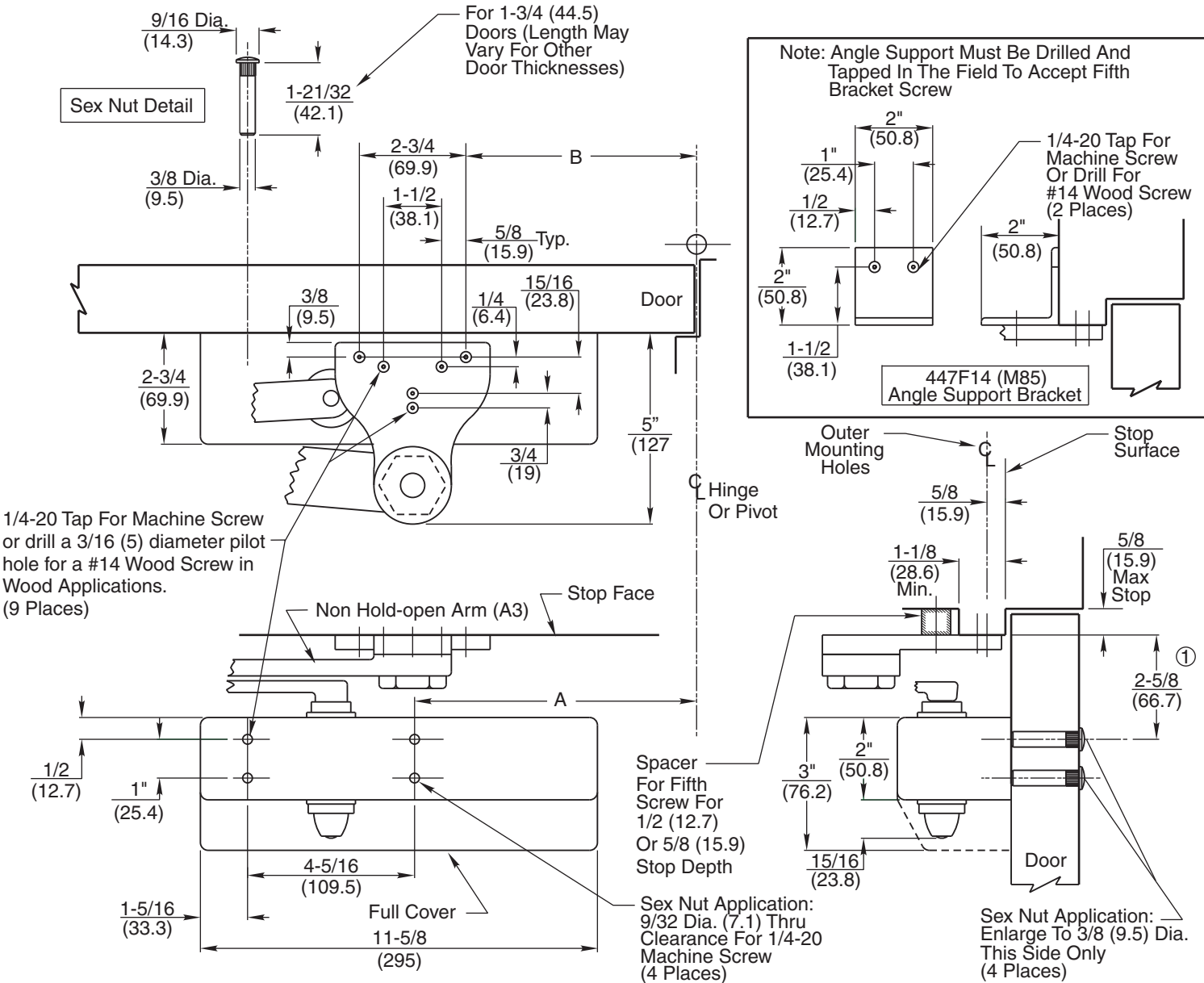
RH SHOWN
LH OPPOSITE

Opening Maximum	A	B	Min Door Width	Application
90°	12-3/4 (324)	11-5/8 (295)	27-3/4 (705)	NON A.D.A.
180°	8-11/16 (221)	7-9/16 (192)	23-5/8 (600)	

NOTES:

1. Dimensions "A" & "B" apply to centerline of hinge/pivot for butt, swing clear, offset and center hung pivots.
2. Maximum degree of opening for center hung pivot is 140°
3. Dimensions given in inches and (mm).
4. Minimum Top Rail: 4-3/16 (106.4)

CAUTION: Closer To Be Installed In A True Horizontal Position To Ensure Proper Closer Performance.



RESPONSIBILITY

DOOR AND FRAME MANUFACTURERS ARE RESPONSIBLE FOR PROVIDING ADEQUATE CONSTRUCTION OR REINFORCEMENTS FOR PROPER INSTALLATION OF HARDWARE SHOWN. ALL ARCHITECTURAL BUILDERS HARDWARE MUST BE INSTALLED ON PROPERLY REINFORCED DOORS AND FRAMES, REGARDLESS OF TYPE, MATERIAL, OR METHOD OF CONSTRUCTION.

DC6210 Series By A3
DC6410 Series By A3

Surface Door Closer
Parallel Arm Mounting
By Heavy Duty Arm

**Corbin
Russwin**
ASSA ABLOY

www.corbinrusswin.com

SUPERSEDES	T30716	DO NOT SCALE DRAWING
TEMPLATE NUMBER	T30716-1	DATE 04-10