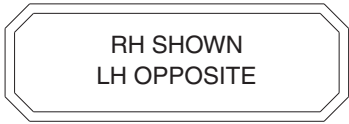


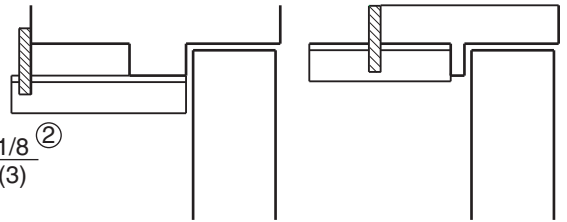
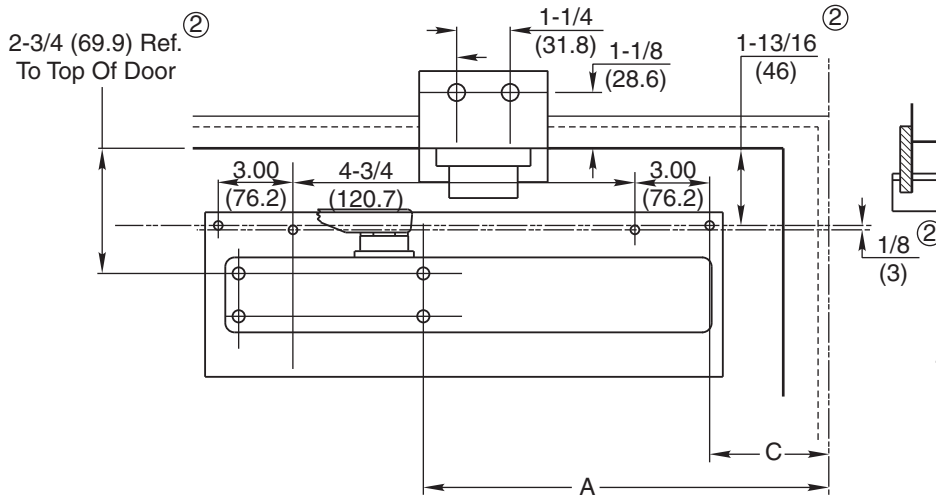
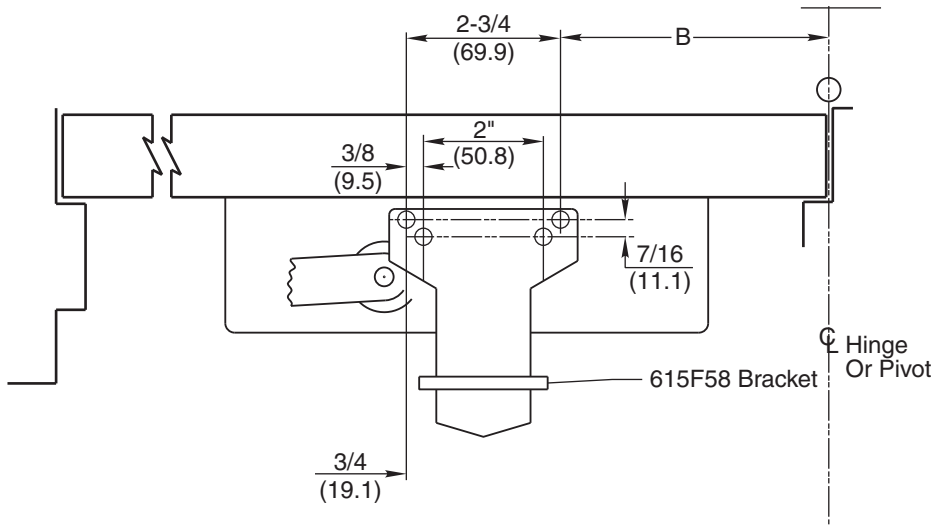
MOUNTING INFORMATION

Sex nuts or through bolts are required for wood and plastic covered composite doors, and any type of door without reinforcements and recommended for wood core and metal clad (Kalamein) type doors.



Closer To Be Installed In A True Horizontal Position To Ensure Proper Closer Performance.

Hold-open	Stop	For Doors 28" To 32" Wide			For Doors 33" To 41" Wide			For Doors 42" To 48" Wide		
		A	B	C	A	B	C	A	B	C
85°	90°	11 (279.4)	10 (254)	5-1/2 (139.7)	13-1/8 (333.4)	12-1/4 (311.2)	7-5/8 (193.7)	15-1/8 (384.2)	14-3/8 (365.1)	9-5/8 (244.5)
90°	95°	10-1/2 (266.7)	9-1/2 (241.3)	5 (127)	12-5/8 (320.7)	11-5/8 (295.3)	7-1/8 (181)	14-1/2 (368.3)	13-3/4 (349.3)	9 (228.6)
95°	100°	10 (254)	9 (228.6)	4-1/2 (114.3)	12 (304.8)	11-1/8 (282.6)	6-1/2 (165.1)	13-7/8 (352.4)	13-1/8 (333.4)	8-3/8 (212.7)
100°	105°	9-1/2 (241.3)	8-1/2 (215.9)	4 (101.6)	11-5/8 (295.3)	10-5/8 (269.9)	6-1/8 (155.6)	13-1/4 (336.6)	12-1/2 (317.5)	7-3/4 (196.9)
105°	110°	9 (228.6)	8 (203.2)	3-1/2 (88.9)	11 (279.4)	10-1/8 (257.2)	5-1/2 (139.7)	12-3/4 (323.9)	12-1/8 (308)	7-1/4 (184.2)
110°	115°	8-1/2 (215.9)	7-1/2 (190.5)	3 (76.2)	10-1/2 (266.7)	9-1/2 (241.3)	5 (127)	12-1/4 (311.2)	11-1/2 (292.1)	6-3/4 (171.5)



This page for Frame Reveals 1-7/8 to 4-5/8 (48mm to 117mm)
See page 2 for all Frame Reveals.

RESPONSIBILITY

DOOR AND FRAME MANUFACTURERS ARE RESPONSIBLE FOR PROVIDING ADEQUATE CONSTRUCTION OR REINFORCEMENTS FOR PROPER INSTALLATION OF HARDWARE SHOWN. ALL ARCHITECTURAL BUILDERS HARDWARE MUST BE INSTALLED ON PROPERLY REINFORCED DOORS AND FRAMES, REGARDLESS OF TYPE, MATERIAL, OR METHOD OF CONSTRUCTION.

DC6210 With Spring Stop Arm
A11 or A12 Push Side Mounting
With Drop Plate 597F59
Standard Reinforcing
Bracket 615F58



ASSA ABLOY

www.corbinruswin.com

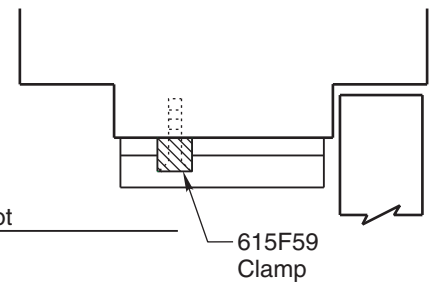
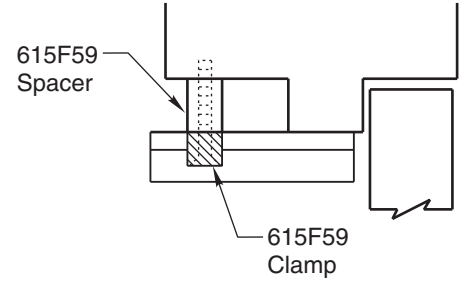
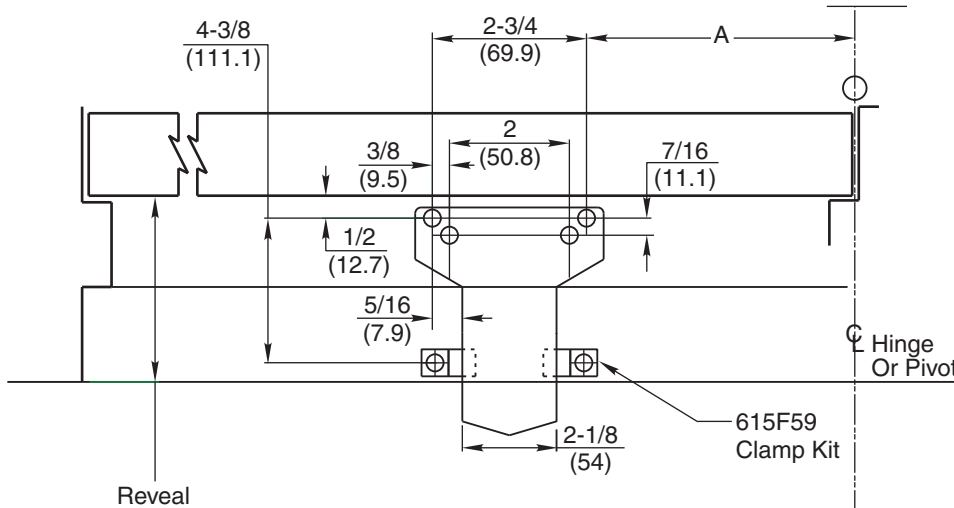
SUPERSEDES	T30733-1	DO NOT SCALE DRAWING	
TEMPLATE NUMBER	T30733-2	SHEET	DATE
		1 OF 2	02-11

MOUNTING INFORMATION

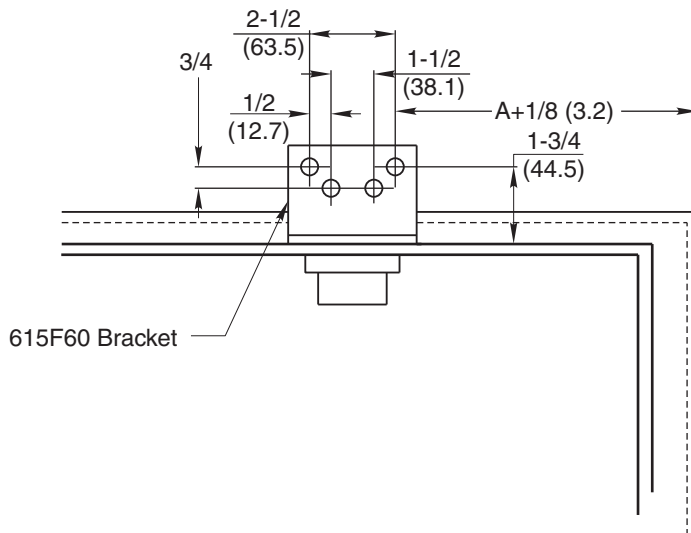
Sex nuts or through bolts are required for wood and plastic covered composite doors, and any type of door without reinforcements and recommended for wood core and metal clad (Kalamein) type doors.

RH SHOWN
LH OPPOSITE

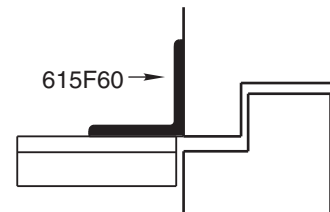
Closer To Be Installed In A True Horizontal Position To Ensure Proper Closer Performance.



Frame Reveals Over 4-5/8
(Uses 615F59 Clamp Kit)



Flush Partitions
(Uses 615F60 Bracket)



RESPONSIBILITY

DOOR AND FRAME MANUFACTURERS ARE RESPONSIBLE FOR PROVIDING ADEQUATE CONSTRUCTION OR REINFORCEMENTS FOR PROPER INSTALLATION OF HARDWARE SHOWN. ALL ARCHITECTURAL BUILDERS HARDWARE MUST BE INSTALLED ON PROPERLY REINFORCED DOORS AND FRAMES, REGARDLESS OF TYPE, MATERIAL, OR METHOD OF CONSTRUCTION.

DC6210 With Spring Stop Arm
A11 or A12 Push Side Mounting
Optional Brackets
615F59 or 615F60

**Corbin
Russwin**
ASSA ABLOY

www.corbinrusswin.com

SUPERSEDES	T30733-1	DO NOT SCALE DRAWING	
TEMPLATE NUMBER	T30733-2	SHEET	DATE
		2 OF 2	02-11