

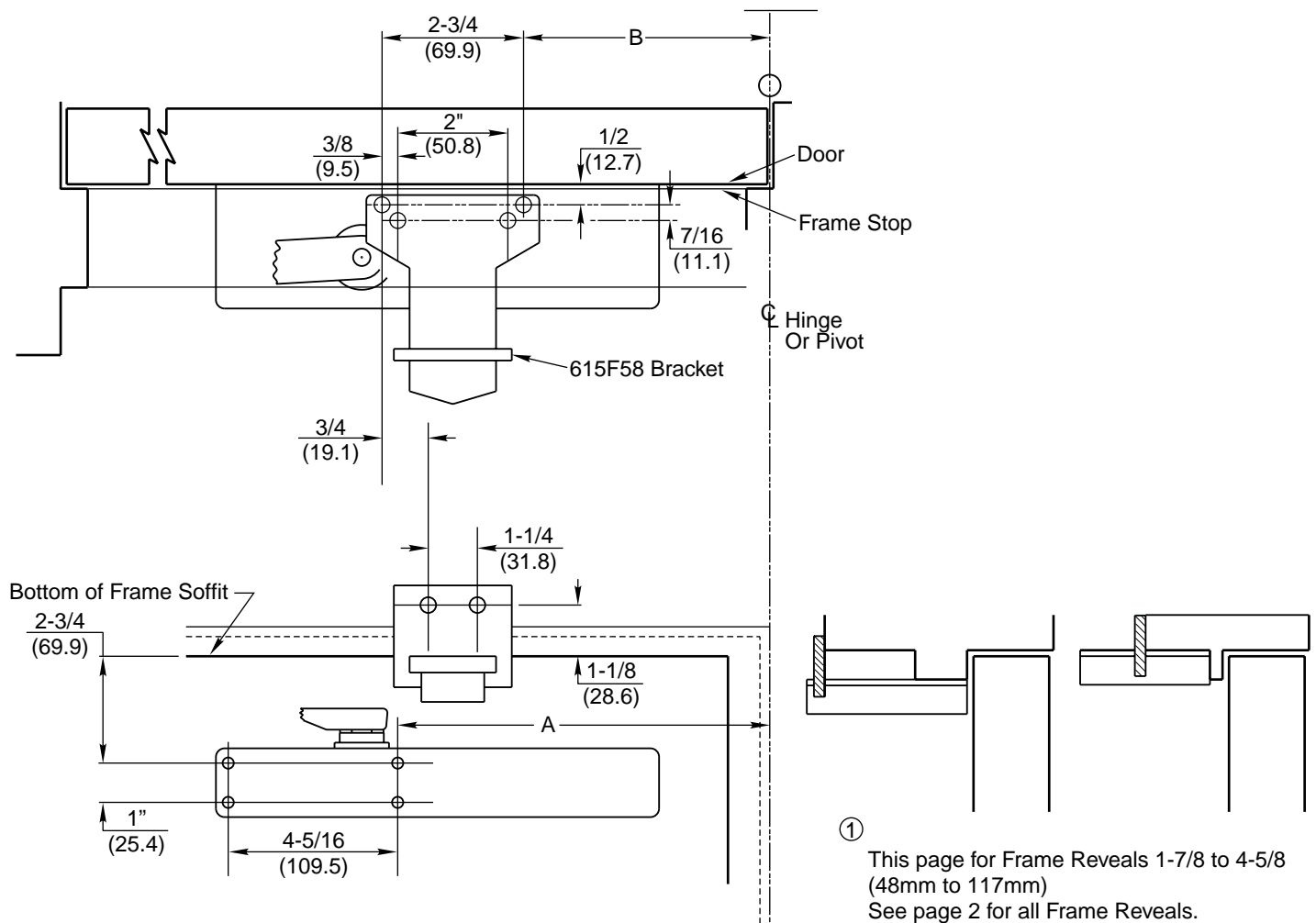
MOUNTING INFORMATION

Sex nuts or through bolts are required for wood and plastic covered composite doors, and any type of door without reinforcements and recommended for wood core and metal clad (Kalamein) type doors.

RH SHOWN
LH OPPOSITE

Closer To Be Installed In A True Horizontal Position To Ensure Proper Closer Performance.

Hold-open	Stop	For Doors 28" To 32" Wide		For Doors 33" To 41" Wide		For Doors 42" To 48" Wide	
		A	B	A	B	A	B
85°	90°	11 (279.4)	10 (254)	13-1/8 (333.4)	12-1/4 (311.2)	15-1/8 (384.2)	14-3/8 (365.1)
90°	95°	10-1/2 (266.7)	9-1/2 (241.3)	12-5/8 (320.7)	11-5/8 (295.3)	14-1/2 (368.3)	13-3/4 (349.3)
95°	100°	10 (254)	9 (228.6)	12 (304.8)	11-1/8 (282.6)	13-7/8 (352.4)	13-1/8 (333.4)
100°	105°	9-1/2 (241.3)	8-1/2 (215.9)	11-5/8 (295.3)	10-5/8 (269.9)	13-1/4 (336.6)	12-1/2 (317.5)
105°	110°	9 (228.6)	8 (203.2)	11 (279.4)	10-1/8 (257.2)	12-3/4 (323.9)	12-1/8 (308)
110°	115°	8-1/2 (215.9)	7-1/2 (190.5)	10-1/2 (266.7)	9-1/2 (241.3)	12-1/4 (311.2)	11-1/2 (292.1)



RESPONSIBILITY

Door and Frame Manufacturers are responsible for providing adequate construction or reinforcements for proper installation of hardware shown. All architectural builders hardware must be installed on properly reinforced doors and frames, regardless of the type, material, or method of construction.

DC6210 With Spring Stop Arm
A11 or A12 Push Side Mounting
Standard Reinforcing
Bracket 615F58



www.corbinrusswin.com

Do Not Scale Drawing

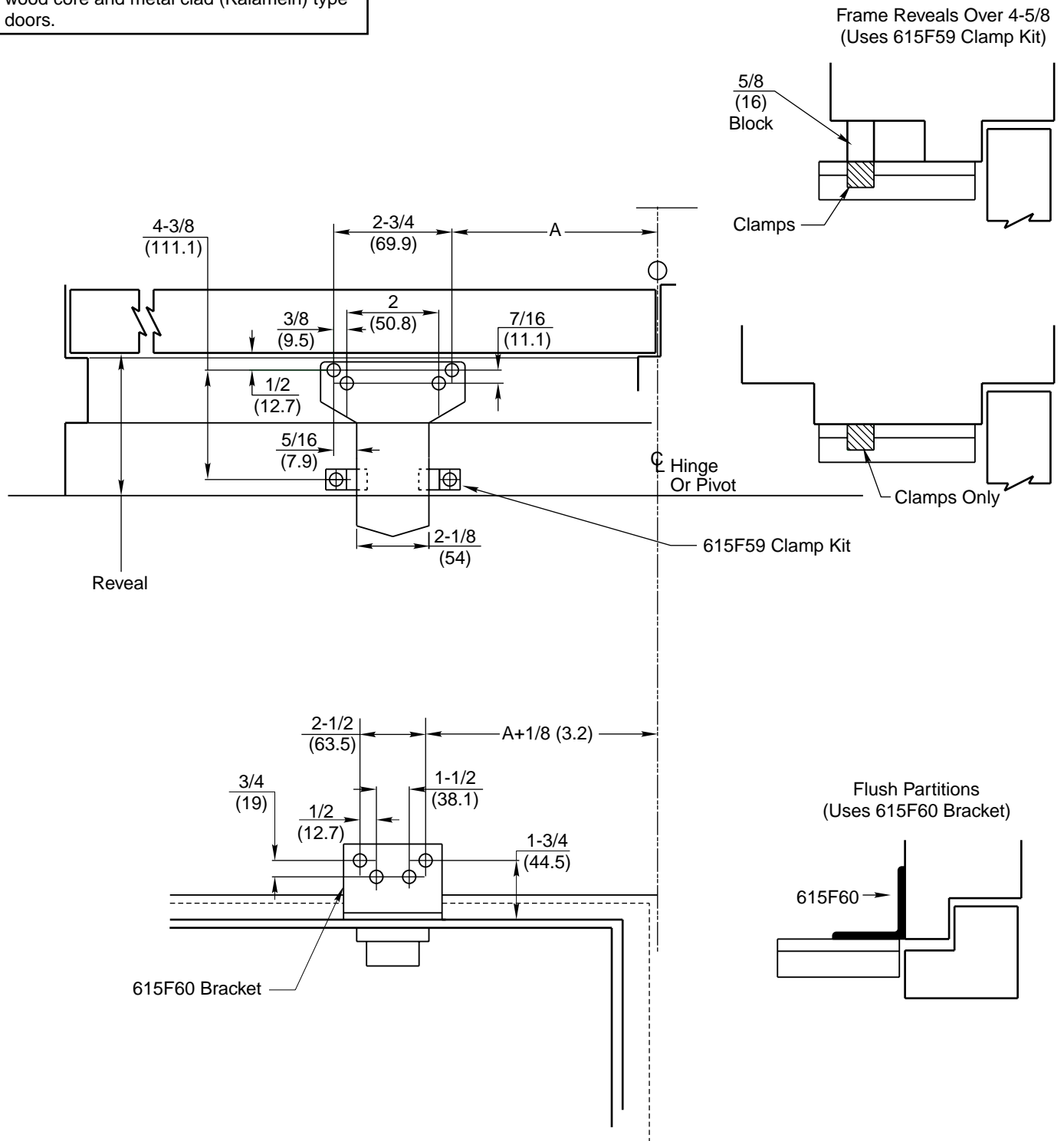
Supersedes	T30730	Dr.	App.
Date	09-04	Template Number	T30730-1 Page 1 of 2

MOUNTING INFORMATION

Sex nuts or through bolts are required for wood and plastic covered composite doors, and any type of door without reinforcements and recommended for wood core and metal clad (Kalamein) type doors.

RH SHOWN
LH OPPOSITE

Closer To Be Installed In A True Horizontal Position To Ensure Proper Closer Performance.



RESPONSIBILITY

Door and Frame Manufacturers are responsible for providing adequate construction or reinforcements for proper installation of hardware shown. All architectural builders hardware must be installed on properly reinforced doors and frames, regardless of the type, material, or method of construction.

DC6210 With Spring Stop Arm
A11 or A12 Push Side Mounting
Optional Brackets
615F59 or 615F60



www.corbinrusswin.com

Do Not Scale Drawing

Supersedes T30730 Dr. App.

Date 09-04 Template Number T30730-1 Page 2 of 2