

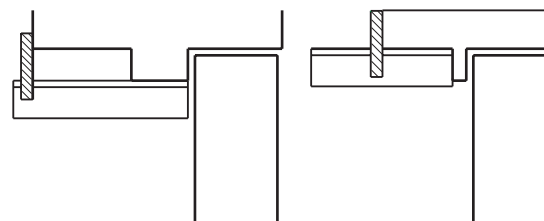
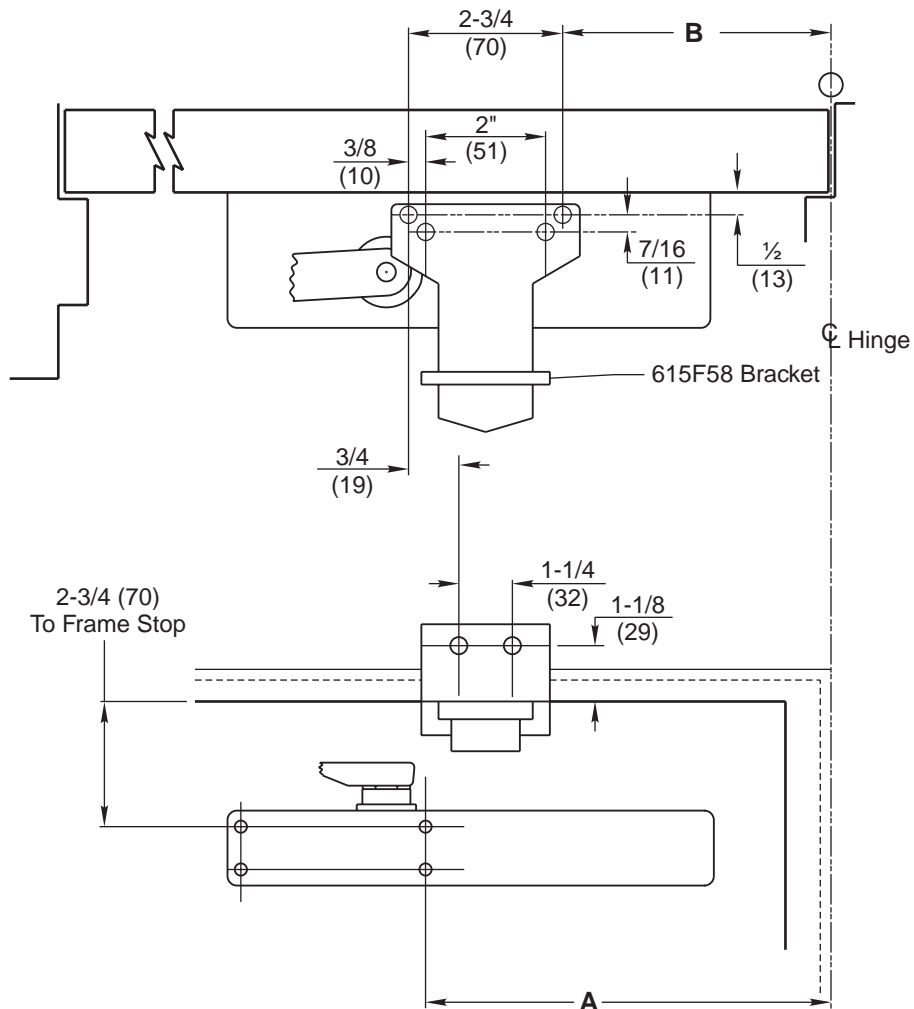
		For 20" Wide Doors	
Hold-open	Stop	A	B
85°	90°	7-7/8 (200)	6-7/8 (175)
90°	95°	7-1/4 (184)	6-1/4 (159)
95°	100°	6-3/4 (171)	5-3/4 (146)

MOUNTING INFORMATION

Sex nuts or through bolts are required for wood and plastic covered composite doors, and any type of door without reinforcements and recommended for wood core and metal clad (Kalamein) type doors unless door manufacturer has a listed alternative means for fastening door hardware.

Closer To Be Installed In A True Horizontal Position To Ensure Proper Closer Performance.

RH SHOWN
LH OPPOSITE



This page for Frame Reveals 1-7/8 to 4-5/8 (48mm to 117mm)
See page 2 for other Frame Reveals.

RESPONSIBILITY

Door and Frame Manufacturers are responsible for providing adequate construction or reinforcements for proper installation of hardware shown. All architectural builders hardware must be installed on properly reinforced doors and frames, regardless of the type, material, or method of construction.

**DC6210 With Spring Stop Arm
A11 or A12 Push Side Mounting
Standard Reinforcing Bracket 615F58
Stop Installation for Door 24 in (61 cm) wide**

1-800-543-3658



ASSA ABLOY

www.corbinrusswin.com

TEMPLATE NUMBER

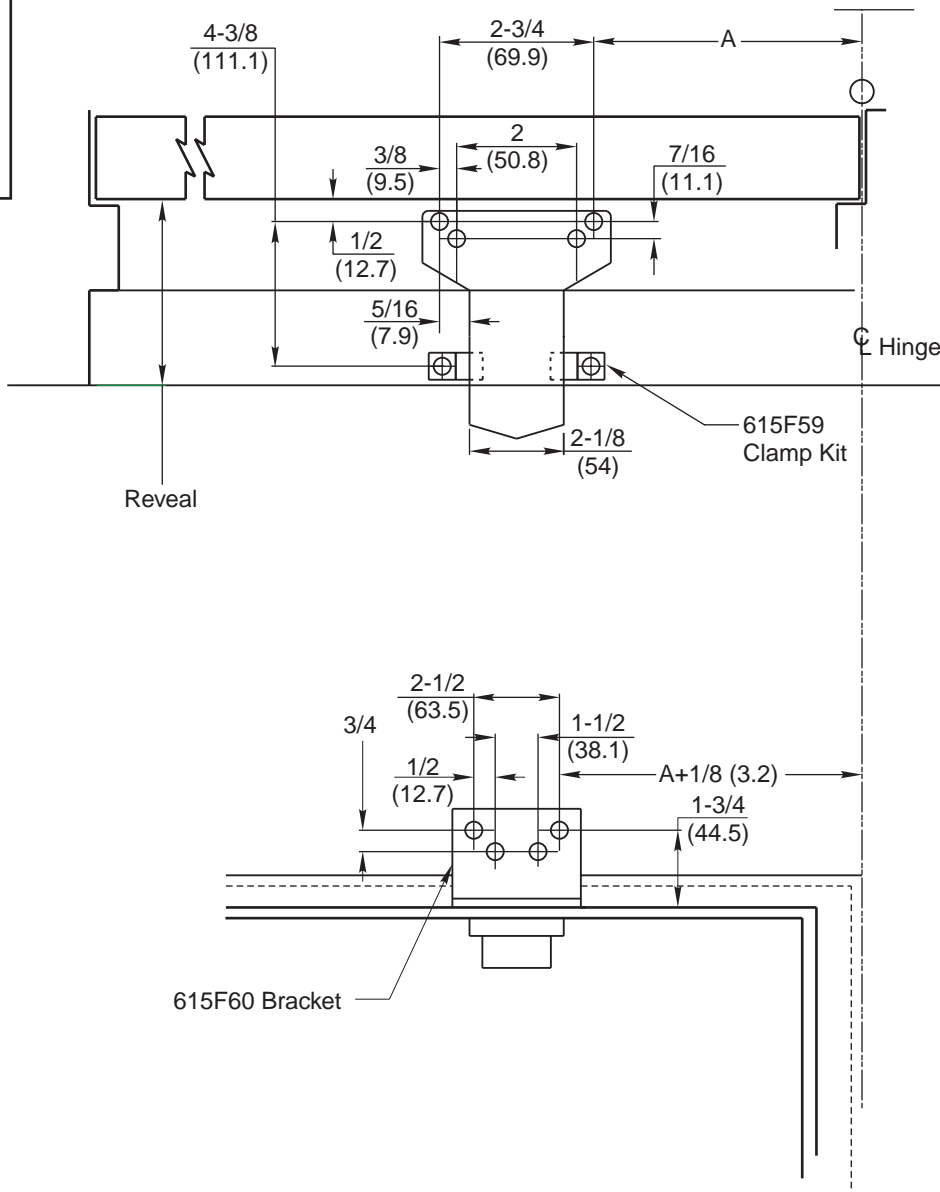
T31033-1

DATE

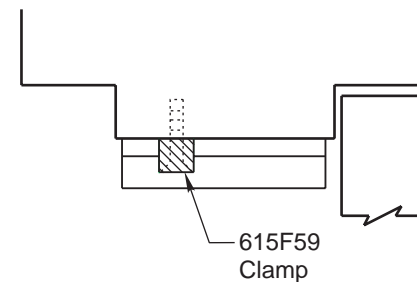
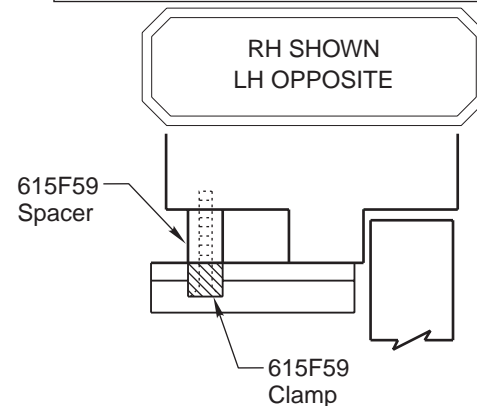
01-08

MOUNTING INFORMATION

Sex nuts or through bolts are required for wood and plastic covered composite doors, and any type of door without reinforcements and recommended for wood core and metal clad (Kalamein) type doors unless door manufacturer has a listed alternative means for fastening door hardware.

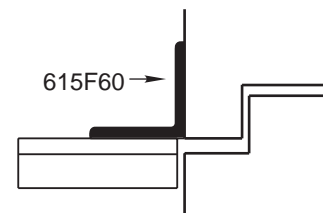


Closer To Be Installed In A True Horizontal Position To Ensure Proper Closer Performance.



Frame Reveals Over 4-5/8
(Uses 615F59 Clamp Kit)

Flush Partitions
(Uses 615F60 Bracket)



RESPONSIBILITY

Door and Frame Manufacturers are responsible for providing adequate construction or reinforcements for proper installation of hardware shown. All architectural builders hardware must be installed on properly reinforced doors and frames, regardless of the type, material, or method of construction.

**DC6210 With Spring Stop Arm
A11 or A12 Push Side Mounting
Optional Brackets 615F59 & 615F60
Stop Installation for Door 24 in (61 cm) wide**

1-800-543-3658



ASSA ABLOY

www.corbinrusswin.com

TEMPLATE NUMBER

T31033-2

DATE

01-08