


**MOUNTING INFORMATION**

Sex nuts or through bolts are required for wood and plastic covered composite doors, and any type of door without reinforcements and recommended for wood core and metal clad (Kalamein) type doors.

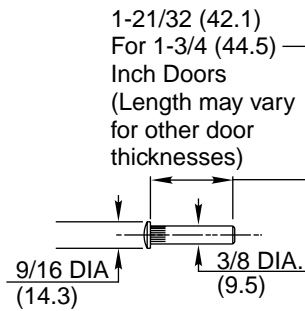
RH SHOWN  
LH OPPOSITE

Opening Maximum	A	B	Hinge Condition
110°	8" (203.2)	13-3/8 (339.7)	Butts, Offset Pivots, And Swing Clear Hinges
180°	5" (127)	10-3/8 (263.5)	
 140°	6-1/2 (165.1)	11-7/8 (301.6)	Center Hung

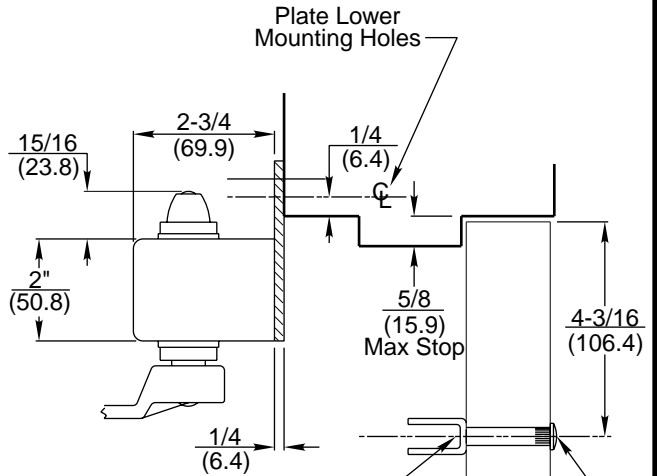
**CAUTION:** CLOSER TO BE INSTALLED IN A TRUE HORIZONTAL POSITION TO ENSURE PROPER CLOSER PERFORMANCE.

**NOTES:**

1. Dimensions given in inches and (mm).
2. 1" (25.4) minimum top jamb required for mounting plate.
- \*3. To mount plate on jambs narrower than 2-3/4 (69.9), decrease 2" dimension and increase 2-7/16 dimension equally.
4. For 1-3/4 (44.5) minimum jambs with required clearance above closer, mount closer directly to jamb without plate.
5. Minimum Top Rail: Add 5/16 (7.9) to arm bracket dimension.
6. Dimensions "A" & "B" apply to centerline of hinge/pivot for butt or swing clear hinge; offset or center pivots.

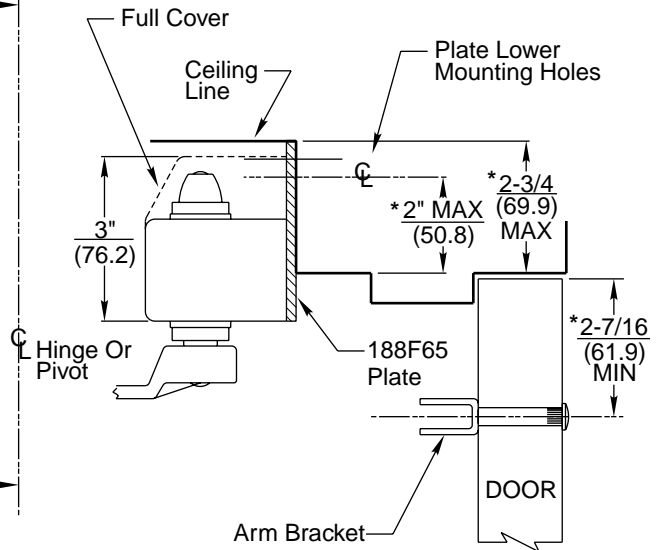
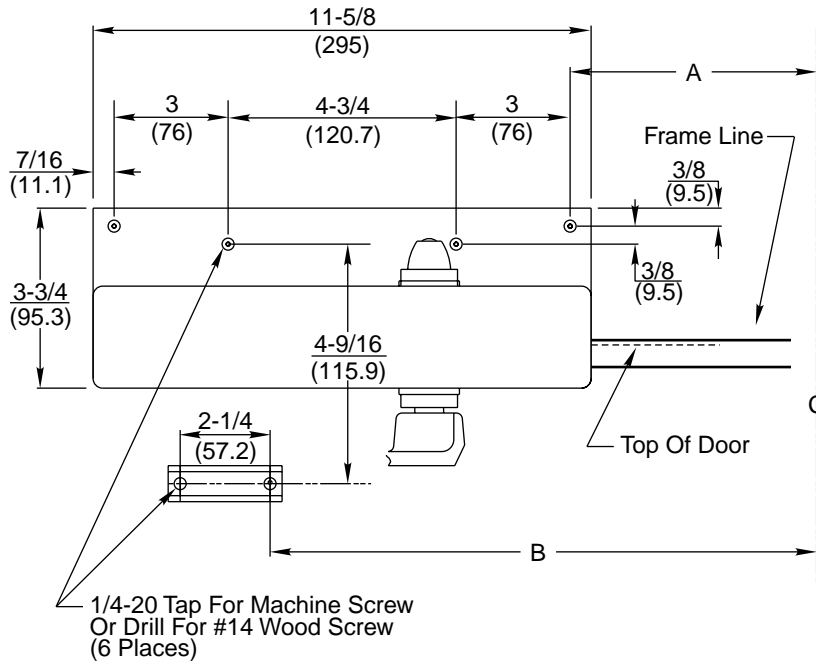


**SEX NUT DETAIL**



Sex Nut Application:  
9/32 Dia. (7.1) Thru Clearance For 1/4-20 Machine Screw (2 Places)

Sex Nut Application:  
Enlarge To 3/8 (9.5) Dia. This Side Only (2 Places)



**RESPONSIBILITY**

Door and Frame Manufacturers are responsible for providing adequate construction or reinforcements for proper installation of hardware shown. All architectural builders hardware must be installed on properly reinforced doors and frames, regardless of the type, material, or method of construction.

DC6220 Series By 188F65  
DC6420 Series By 188F65  
Surface Door Closer  
Top Jamb Mounting By Plate  
(with or without A1, A6, or A8)



www.corbinrusswin.com

Do Not Scale Drawing

Supersedes \_\_\_\_\_ Dr. \_\_\_\_\_ App. \_\_\_\_\_

Date 03-04

Template Number T30707