

**MOUNTING INFORMATION**

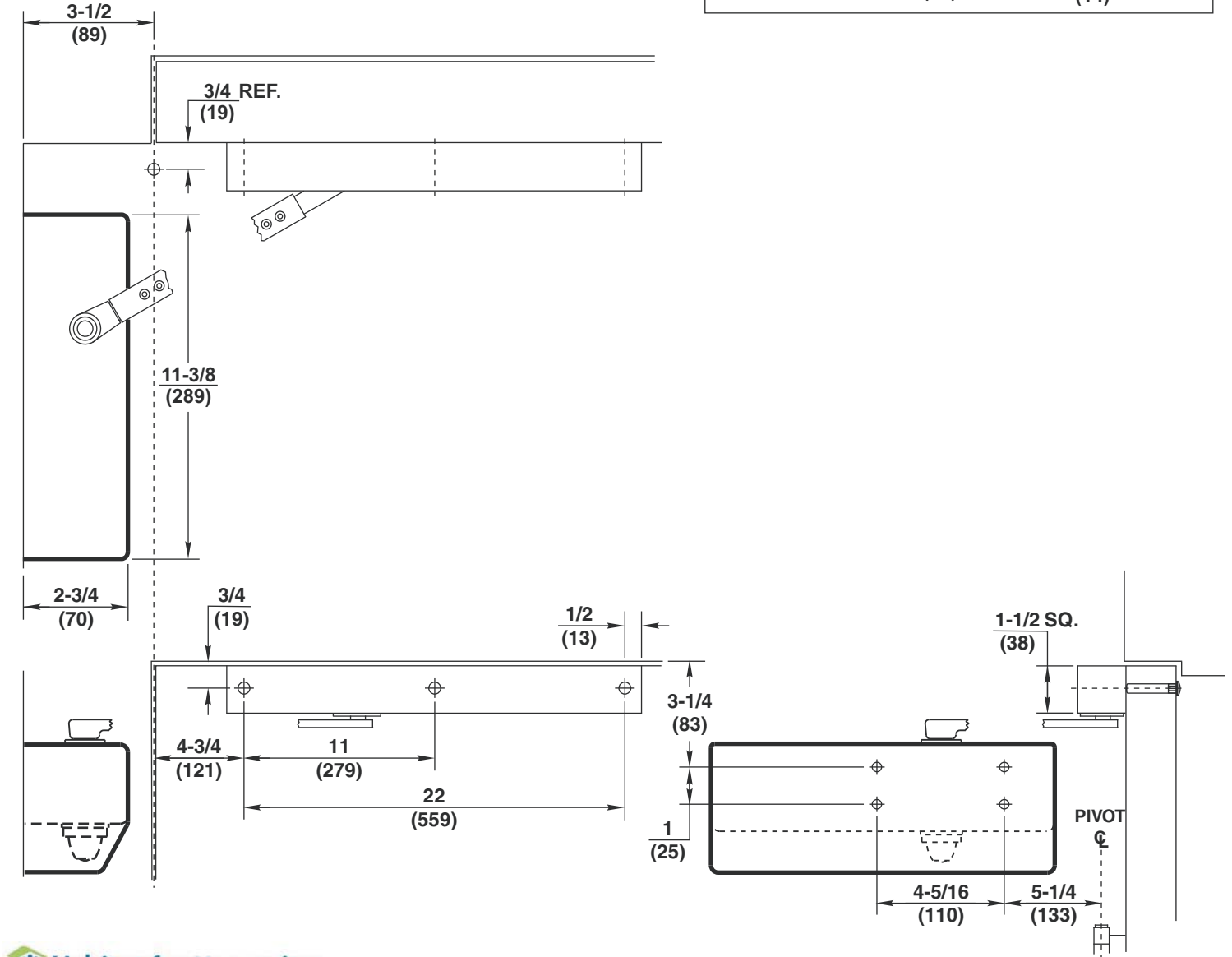
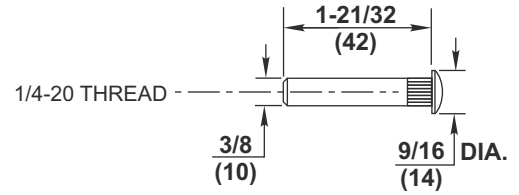
Sex nuts or through bolts are required for wood and plastic covered composite doors, and any type of door without reinforcements and recommended for wood core and metal clad (Kalamein) type doors.

**RH SHOWN  
LH OPPOSITE**

**CAUTION:** Closer To Be Installed In A True Horizontal Position To Ensure Proper Closer Performance.

**MOUNTING SCREW SPECIFICATIONS  
ARM AND QUIK-INSTALL™ BRACKET**

#1/4-14 self-drilling screw. } or { Sex nuts, furnished  
1/8 (3) diameter pilot hole } required for Wood } when ordered  
Applications. }



**RESPONSIBILITY**

DOOR AND FRAME MANUFACTURERS ARE RESPONSIBLE FOR PROVIDING ADEQUATE CONSTRUCTION OR REINFORCEMENTS FOR PROPER INSTALLATION OF HARDWARE SHOWN. ALL ARCHITECTURAL BUILDERS HARDWARE MUST BE INSTALLED ON PROPERLY REINFORCED DOORS AND FRAMES, REGARDLESS OF TYPE, MATERIAL, OR METHOD OF CONSTRUCTION.

**DC6230 Series  
DC6430 Series**

**Surface Door Closer  
Pocket Door Mounting with  
Pull Side Track & Arm**



**ASSA ABLOY**

www.corbinruswin.com

SUPERSEDES	T31113	DO NOT SCALE DRAWING
TEMPLATE NUMBER	T31113-1	DATE 02-11