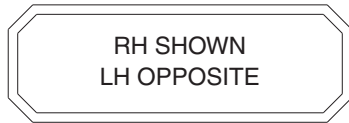


**MOUNTING INFORMATION**

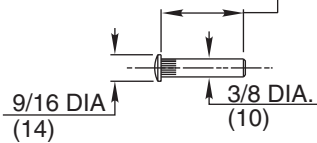
Sex nuts or through bolts are required for wood and plastic covered composite doors, and any type of door without reinforcements and recommended for wood core and metal clad (Kalamein) type doors unless door manufacturer has a listed alternative means for fastening door hardware.

COVER	PLATE	"A" Dim.
Full (Std.)	597F59	1/8 (3)
Slim (Opt. M76)	294F40	3/8 (9)

- NOTES:**
1. Hold-open may be set from 85° to 105° positions.
  2. Maximum degree of opening is 110°. All degrees of opening are based on use of butt hinges or 3/4" (19) offset pivots.
  3. Dimensions given in inches and (mm).
  4. Minimum 3" (76) frame face required for mounting closer bracket.
  5. Minimum Top Rail: 1-5/8" (41).
  6. Minimum ceiling clearance 3" (76).



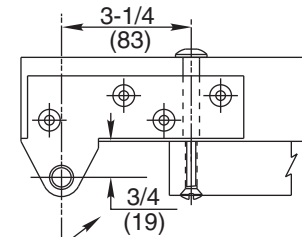
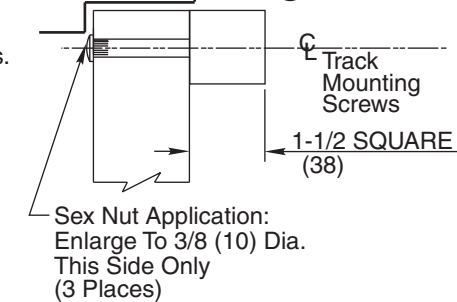
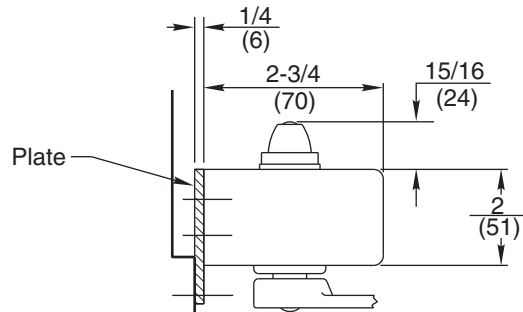
1-21/32 (42)  
For 1-3/4 (45)  
Inch Doors  
(Length may vary for other door thicknesses)



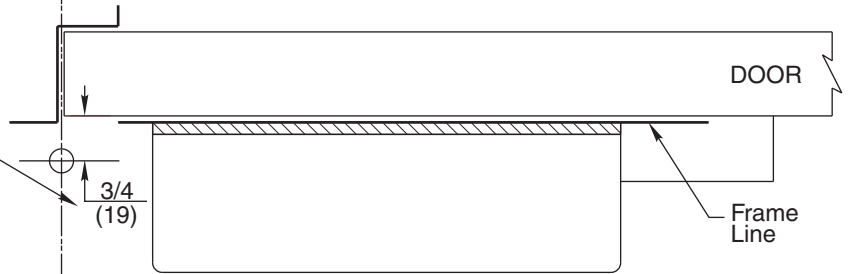
**SEX NUT DETAIL**

Offset pivot requires 26" (660) minimum door width

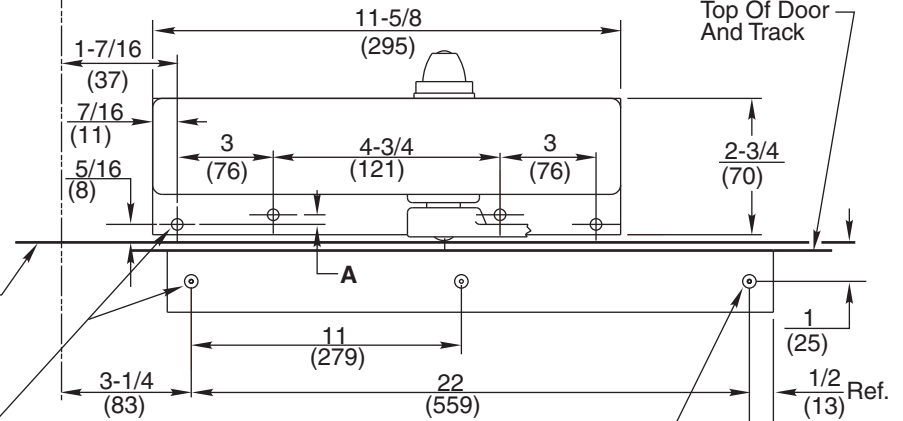
Butt hinge requires 26" (660) minimum door width



Offset Pivot



Hinge or Pivot



1/4-20 Tap For Machine Screw Or Drill For #14 Wood Screw (7 Places)

Sex Nut Application: 9/32 (7.1) Dia. Thru Clearance For 1/4-20 Machine Screw (3 Places)

**CAUTION:** CLOSER TO BE INSTALLED IN A TRUE HORIZONTAL POSITION TO ENSURE PROPER CLOSER PERFORMANCE.

**RESPONSIBILITY**

DOOR AND FRAME MANUFACTURERS ARE RESPONSIBLE FOR PROVIDING ADEQUATE CONSTRUCTION OR REINFORCEMENTS FOR PROPER INSTALLATION OF HARDWARE SHOWN. ALL ARCHITECTURAL BUILDERS HARDWARE MUST BE INSTALLED ON PROPERLY REINFORCED DOORS AND FRAMES, REGARDLESS OF TYPE, MATERIAL, OR METHOD OF CONSTRUCTION.

②

**DC6230 Series By 597F59 / 294F40**  
**DC6430 Series By 597F59 / 294F40**  
Surface Door Closer - Track Style  
Top Jamb Mounting by Plate  
(with or without A1)



**ASSA ABLOY**

www.corbinrusswin.com

SUPERSEDES T31035-1 DO NOT SCALE DRAWING

TEMPLATE NUMBER T31035-2 DATE 04-10